

RECEIVED  
 MAR 20 2002  
 BY [Signature]

## VERNON COUNTY CERTIFIED U.S. PUBLIC LAND SURVEY MONUMENT RECORD

INSTRUCTIONS: THIS RECORD SHALL SHOW THE LOCATION OF THE CORNER AND SHALL INCLUDE ALL OF THE FOLLOWING ELEMENTS (A-I)

(A) IDENTIFY THE CORNER BY REFERENCE TO THE U.S. PUBLIC LAND SURVEY SYSTEM

**E 1/4 Section 33, T13N R5W**

☐ = CORNER MONUMENT RESTORED

WITNESSES TO CORNER LOCATION:

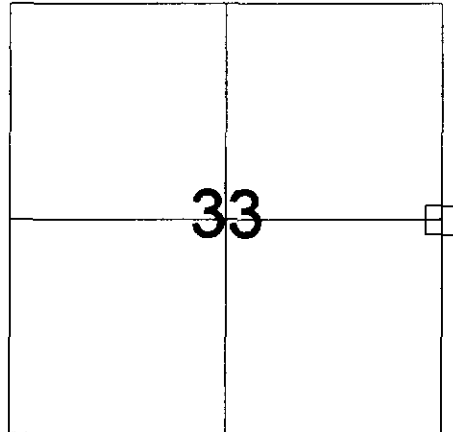
- 1) Curtis Crook
- 2) Chad Crook
- 3) Brenda Crook

STATE PLANE COORDINATES (WISCONSIN SOUTH ZONE)

NORTHING:  
 EASTING:

VERNON COUNTY COORDINATES

NORTHING: 150454.910  
 EASTING: 680825.856



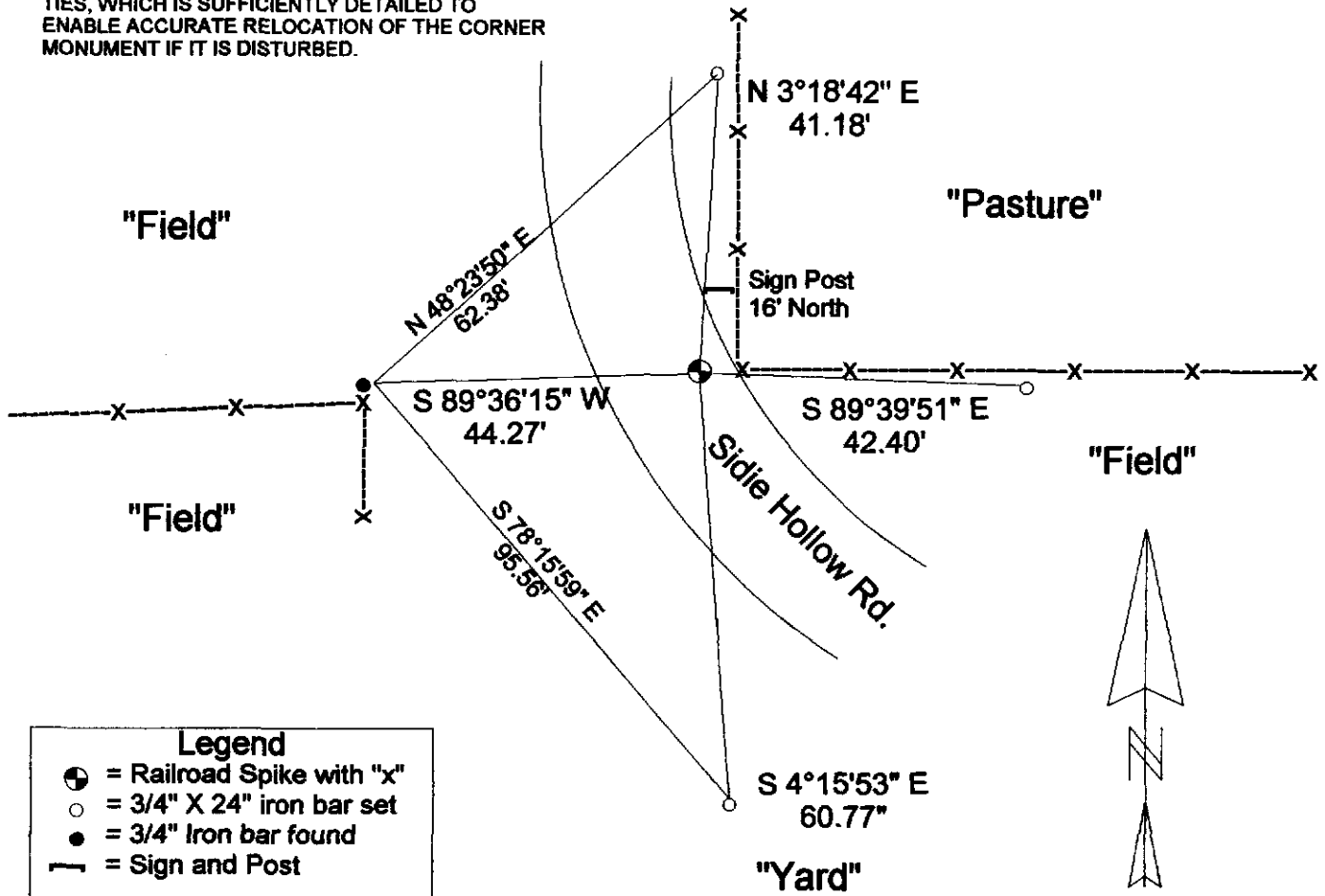
SECTION 33, TOWN 13 NORTH, RANGE 5 WEST

(B) DESCRIBE ANY RECORD EVIDENCE, MONUMENT EVIDENCE, OCCUPATIONAL EVIDENCE, TESTIMONIAL EVIDENCE OR ANY OTHER MATERIAL EVIDENCE YOU CONSIDERED, AND WHETHER THE MONUMENT WAS FOUND OR PLACED.

Found previously set 3/4" iron bar on tree & fenceline leading south, on west side of road.  
 Did not fit interior occupation of Section 33 by 50', and misses Section 34 occupation by 37'.  
 Putting on a straight line between SE & NE moves the corner 44' East, making the adjacent 40 corners within 3 1/2', so used this as the most logical location for this corner. (cont. on back, "E")

(C) IN THE PLAN VIEW DRAWING BELOW, PROVIDE REFERENCE TIES TO AT LEAST 4 WITNESS MONUMENTS OR, IF THE LOCATION IS WITHIN A MUNICIPALITY, TO AT LEAST 2 WITNESS MONUMENTS. (WITNESS MONUMENTS SHALL BE MADE OF CONCRETE, NATURAL STONE, IRON, OR OTHER EQUALLY DURABLE MATERIAL.) DESCRIBE WITNESS MONUMENTS.

(D) SHOW A PLAN VIEW DRAWING, DEPICTING THE RELEVANT MONUMENTS AND REFERENCE TIES, WHICH IS SUFFICIENTLY DETAILED TO ENABLE ACCURATE RELOCATION OF THE CORNER MONUMENT IF IT IS DISTURBED.



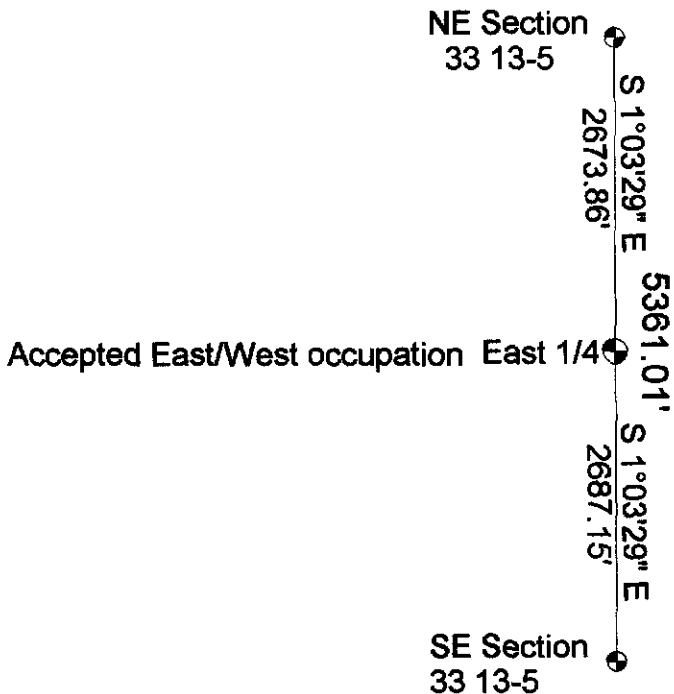
(E) DESCRIBE ANY MATERIAL DISCREPENCY BETWEEN THE LOCATION OF THE CORNER AS RESTORED OR REESTABLISHED AND THE LOCATION OF THAY CORNER AS PREVIOUSLY RESTORED OR REESTABLISHED BY DISTANCE AND DIRECTION. SHOW THE DISCREPENCY ON THE PLAN VIEW DRAWING UNDER (D), ABOVE. SHOW THE DISTANCES BETWEEN THE CORNER AS PREVIOUSLY RESTORED OR REESTABLISHED AND (1) THE CORNER AS RESTORED OR REESTABLISHED, AND (2) TO AT LEAST 2 OF THE WITNESS MONUMENTS AS SHOWN ON THE DRAWING IN (D), ABOVE.

Early plat books show a large area of common ownership around this corner during early 1900's, and no north-south road; with no older buildings in immediate area, this area could have been in fields. Hills prevent seeing from SE to NE corners, & would have required a minimum of 2 points between them to see. With no record of resurveys after the properties were divided (and road built), it is a matter of speculation on how the divisions were made.

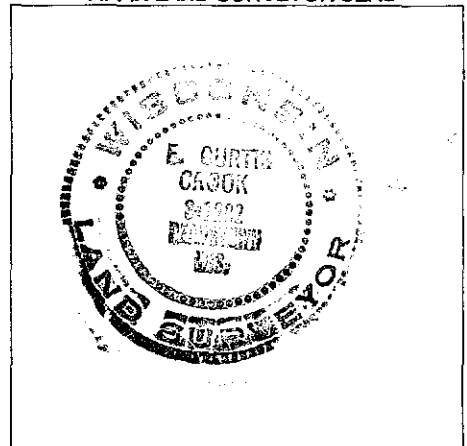
(F) WAS THE CORNER RESTORED THROUGH ACCEPTANCE OF (1) AN OBLITERATED EVIDENCE LOCATION, OR (2) A FOUND PERPETUATED LOCATION?

An Obliterataded Evidence Location.

(G & H) WAS THE CORNER REESTABLISHED THROUGH LOST CORNER PROPORTIONED METHODS? IF SO SHOW THE METHOD, INCLUDING THE DIRECTION AND DISTANCES TO OTHER PUBLIC LAND SURVEY CORNERS USED AS EVIDENCE OR USED FOR PROPORTIONING IN DETERMINING THE CORNER LOCATION.



AFFIX LAND SURVEYOR SEAL



(I) I, F. CURTIS CROOK, CERTIFY THAT THE LOCATION SHOWN ON THIS RECORD WAS DETERMINED BY ME OR UNDER MY DIRECTION AND CONTROL AND THAT THIS U.S. PUBLIC LAND SURVEY MONUMENT RECORD IS CORRECT AND COMPLETE TO THE BEST OF MY KNOWLEDGE AND BELIEF.

*F. Curtis Crook*      3-19-02  
 SIGNATURE                      DATE