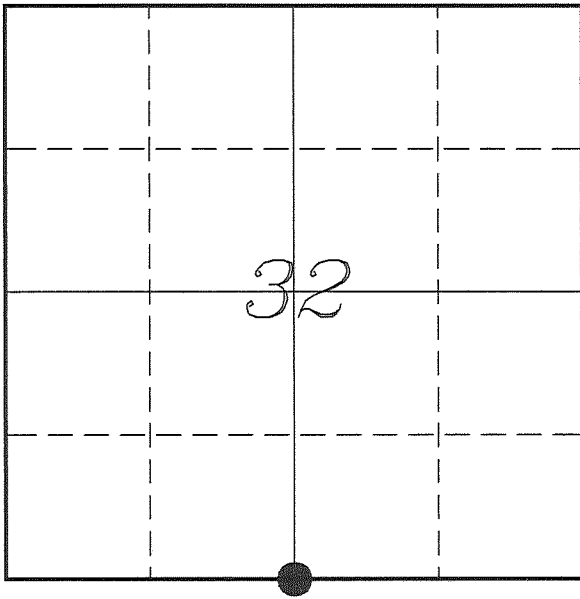


U. S. PUBLIC LAND SURVEY MONUMENT RECORD

**SECTION 32, T13N, R5W, TOWN OF JEFFERSON
VERNON COUNTY, WISCONSIN**



LOCATION OF LANDMARK

VERNON COUNTY COORDINATE SYSTEM	
Northing	147739.947
Easting	673001.334
Datum	NAD 1983 (2011)
Elevation	
Datum	
TYPE OF LANDMARK: Set Lunde Monument 4" Brass Capped Iron Pipe	
BEARINGS ARE REFERENCED TO: Vernon County Coordinates (Survey Grade)	

Witnesses: Laurence E Johns III
Al Hoff

Eagle Ridge Surveying
PO Box 213
Wilton, Wisconsin

Date: 30 December 2016

Describe any record evidence, monument evidence, testimonial evidence or any other material evidence you considered and whether the monument was found or restored through acceptance of an obliterated evidence location.

No bearing trees of record were located. Though I did find a tree to the North that was blazed, most likely by Crook when he set the corner.

I found the 3/4" iron rod set by Crook 20 feet to the East of a 3-way fence corner. I did find a couple fence t-posts to the North that lined up with this corner. There is no wire between the posts.

It appears that Crook set this corner based on the occupation at the N 1/4 Corner of Section 5 and offset this corner to the East at a mean offset.

This current location is supported by aerial photography from 1939.

The 3/4" iron rod was placed based on occupation that most likely represents the survey by Knower. Therefore, I accepted the iron rod as the best available evidence of the original corner and replaced it with a Lunde Monument.

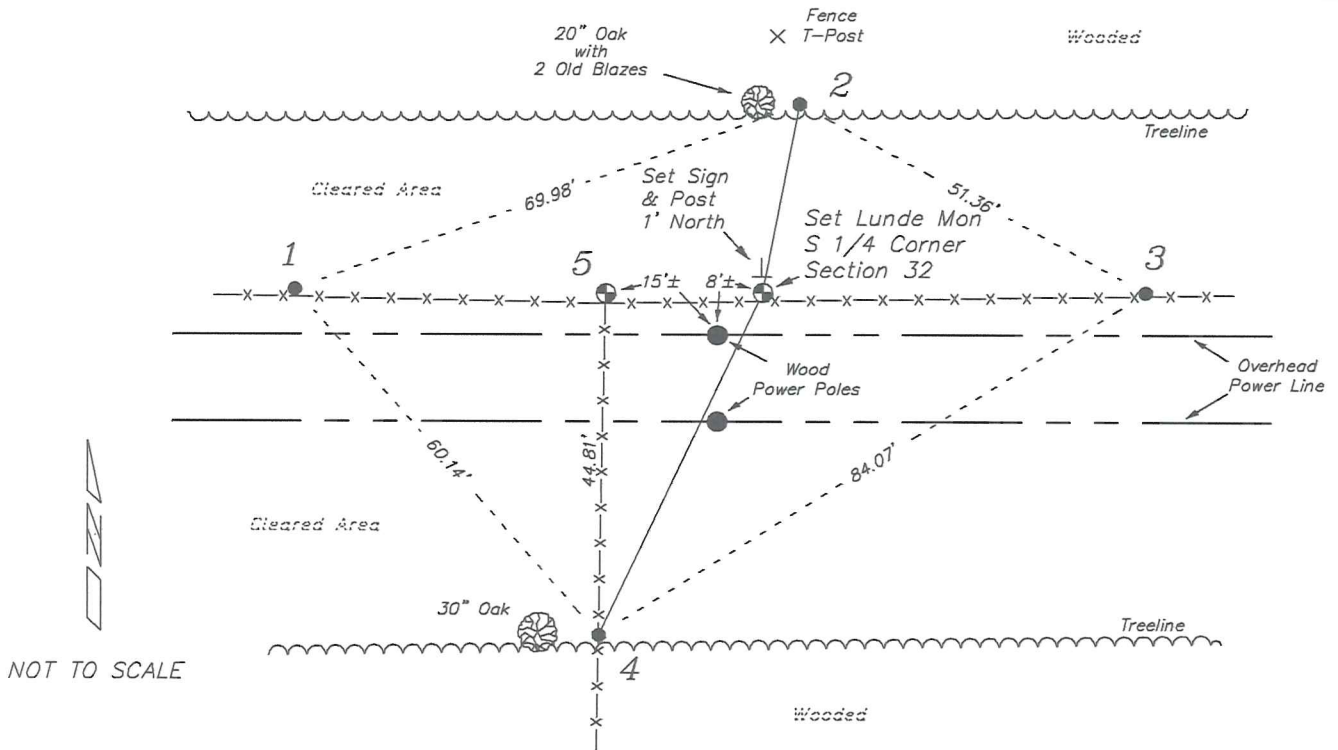
Describe or show any material discrepancy between the location of the restored corner and that of the corner previously restored or re-established.

J E Whitcher established this corner in November 1844.

F Curtis Crook was at this corner, in February 1995, during a survey in Section 32. He shows that he set a 3/4" iron rod at this corner.

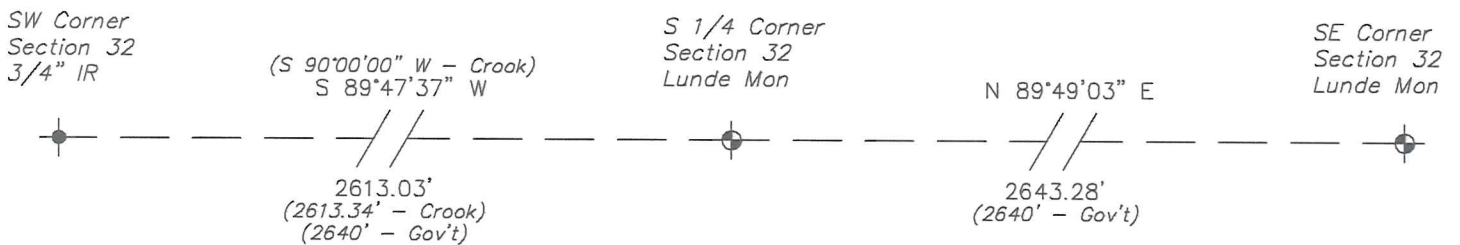
RECORD OF DURABLE WITNESS MONUMENTS

NO	DESCRIPTION	BEARING	DISTANCE
1	Set 3/4" x 18" Iron Rod In Fence Line	N 89°35'22" W	60.83'
2	Set 3/4" x 18" Iron Rod 3' East of a Blazed 20" Oak	N 10°55'03" E	25.24'
3	Set 3/4" x 18" Iron Rod In Fence Line	N 89°57'35" E	49.79'
4	Set 3/4" x 18" Iron Rod In Fence Line - 3' East of a 30" Oak	S 25°22'35" W	49.67'
5	Lunde Monument N 1/4 Corner - Section 5	S 89°47'37" W	20.40' (20.13')



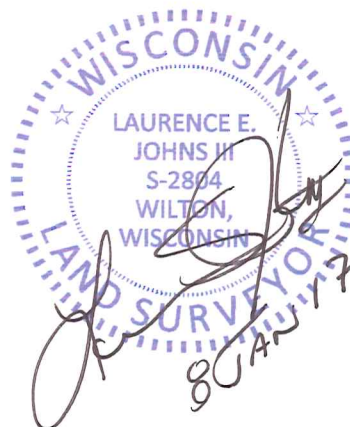
PLAN VIEW DRAWING OF REFERENCE TIES

Map Showing Distance And Direction To Other Public Land Survey
Corners Used For Re-Establishing The Corner



Note:

Measurements were not made to adjoining corners at this time.
Bearings and distances shown are based on recorded information and shown for reference.



I, Laurence E Johns III PLS 2804, Professional Land Surveyor, hereby certify that the corner location shown on this record was determined by me or under my direction and control, and that this U.S. Public Land Survey Monument Record is correct and complete to the best of my knowledge and belief.