

SEP 20 1995

CERTIFIED LAND CORNER

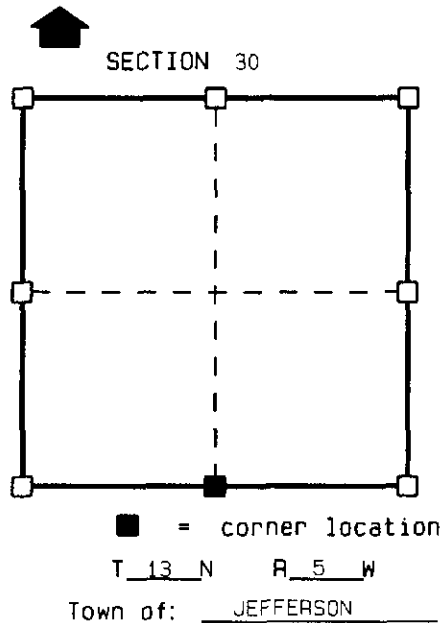
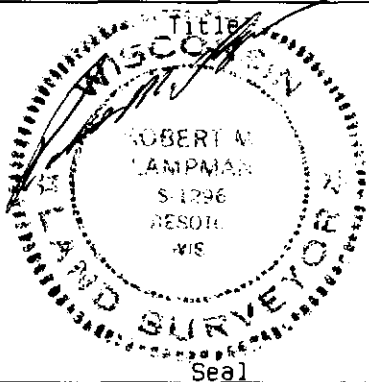
STATE OF WISCONSIN)
COUNTY OF VERNON } S.S.

CERTIFICATE

I, ROBERT M. LAMPMAN do hereby certify
that on the 16th day of JUNE 1995,
I found ~~EXISTENCE~~ (no evidence) of the S 1/4
corner of SECTION 30, T13 N. R5 W.
Fourth Principal Meridian, and I re-established
said corner according to the Wisconsin Statutes
as shown and described hereon.

Dated this 6th day of JULY 1995

ROBERT M. LAMPMAN R.L.S. S-1296



History of original corner establishment:

ORIGINAL CORNER ESTABLISHED BY S.D. DIXON IN 1845.
CORNER VISITED BY W.H. KNOWER IN 1885 DURING A SURVEY IN SECTION 31.

Description of corner evidence found:

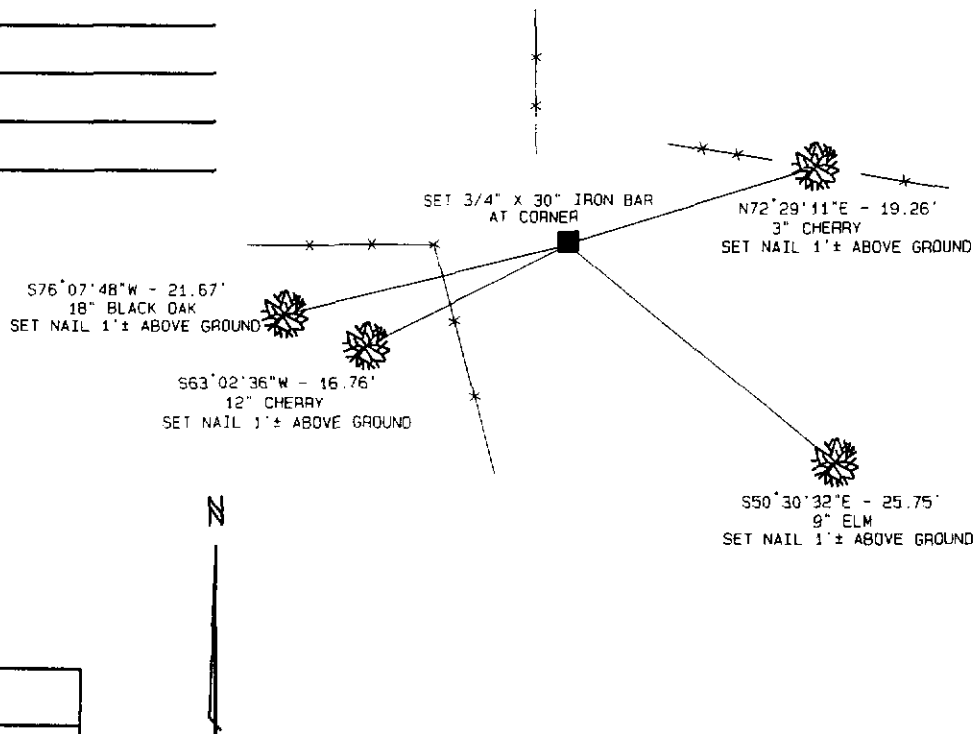
CORNER RE-ESTABLISHED USING INFORMATION FROM A SURVEY BY CURTIS F. CROOK.

Description of corner and witness monuments, references and accessories used to perpetuate the original or re-established location of this corner:

Witnesses to corner location:

ROBERT M. LAMPMAN
JESSICA A. ZAMOR

Sketch:



SURVEY CONTROL ORDER

Horizontal
Vertical

WISCONSIN COORDINATE SYSTEM

Corner	East (X)	North (Y)	Elevation (Z)	Zone
Control Sta. Name				