

RECEIVED  
 OCT 16 2001  
 BY: M.M.

VERNON COUNTY  
 CERTIFIED U.S. PUBLIC LAND SURVEY MONUMENT RECORD

INSTRUCTIONS: THIS RECORD SHALL SHOW THE LOCATION OF THE CORNER AND SHALL INCLUDE ALL OF THE FOLLOWING ELEMENTS (A-I)

(A) IDENTIFY THE CORNER BY REFERENCE TO THE U.S. PUBLIC LAND SURVEY SYSTEM

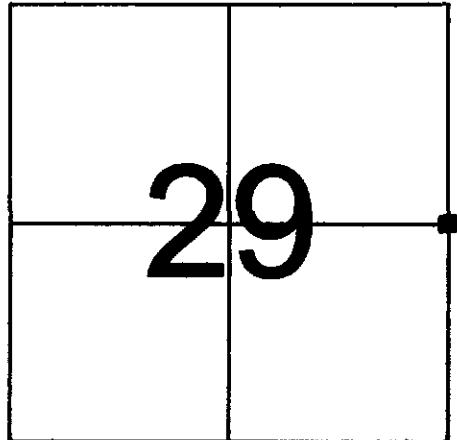
■ = CORNER MONUMENT RESTORED

WITNESSES TO CORNER LOCATION:

- 1) PATRICK J. DEDERICH
- 2) JOHN E. DEDERICH

VERNON COUNTY COORDINATES

NORTHING: 155,735.09  
 EASTING: 675,537.84



SECTION 29, TOWN 13 NORTH, RANGE 5 WEST

(B) DESCRIBE ANY RECORD EVIDENCE, MONUMENT EVIDENCE, OCCUPATIONAL EVIDENCE, TESTIMONIAL EVIDENCE OR ANY OTHER MATERIAL EVIDENCE YOU CONSIDERED, AND WHETHER THE MONUMENT WAS FOUND OR PLACED.

FOUND 3/4" X 30" IRON ROD AS PER TIE SHEET DATED 8/9/95 BY ROBERT M. LAMPMAN.  
 REPLACED WITH LUNDE MONUMENT.

(C) IN THE PLAN VIEW DRAWING BELOW, PROVIDE REFERENCE TIES TO AT LEAST 4 WITNESS MONUMENTS OR, IF THE LOCATION IS WITHIN A MUNICIPALITY, TO AT LEAST 2 WITNESS MONUMENTS. (WITNESS MONUMENTS SHALL BE MADE OF CONCRETE, NATURAL STONE, IRON, OR OTHER EQUALLY DURABLE MATERIAL.) DESCRIBE WITNESS MONUMENTS.

(D) SHOW A PLAN VIEW DRAWING, DEPICTING THE RELEVANT MONUMENTS AND REFERENCE TIES, WHICH IS SUFFICIENTLY DETAILED TO ENABLE ACCURATE RELOCATION OF THE CORNER MONUMENT IF IT IS DISTURBED.

LEDGEND

- 3/4" X 24" IRON ROD SET
- LUNDE MONUMENT
- ⊥ 2" CHANNEL POST W/GOVT SIGN

NOT TO SCALE



29

10" APPLE

15" CHERRY

26

PASTURE

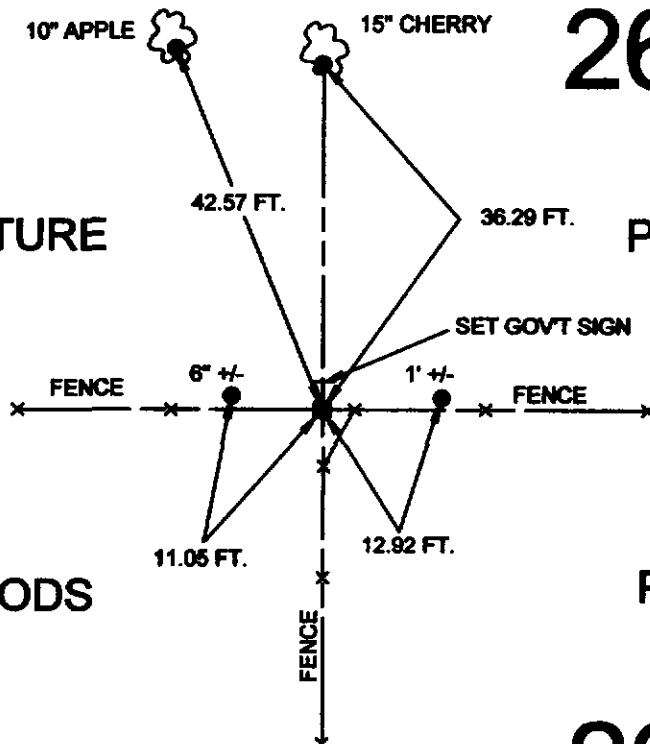
PASTURE

WOODS

PASTURE

29

26



BEARINGS ARE BASED ON THE VERNON COUNTY COORDINATE SYSTEM

(E) DESCRIBE ANY MATERIAL DISCREPANCY BETWEEN THE LOCATION OF THE CORNER AS RESTORED OR REESTABLISHED AND THE LOCATION OF THAT CORNER AS PREVIOUSLY RESTORED OR REESTABLISHED BY DISTANCE AND DIRECTION. SHOW THE DISCREPANCY ON THE PLAN VIEW DRAWING UNDER (D), ABOVE. SHOW THE DISTANCES BETWEEN THE CORNER AS PREVIOUSLY RESTORED OR REESTABLISHED AND (1) THE CORNER AS RESTORED OR REESTABLISHED, AND (2) TO AT LEAST 2 OF THE WITNESS MONUMENTS AS SHOWN ON THE DRAWING IN (D), ABOVE.

(F) WAS THE CORNER RESTORED THROUGH ACCEPTANCE OF (1) AN OBLITERATED EVIDENCE LOCATION, OR (2) A FOUND PERPETUATED LOCATION?

(2) A FOUND PERPETUATED LOCATION.

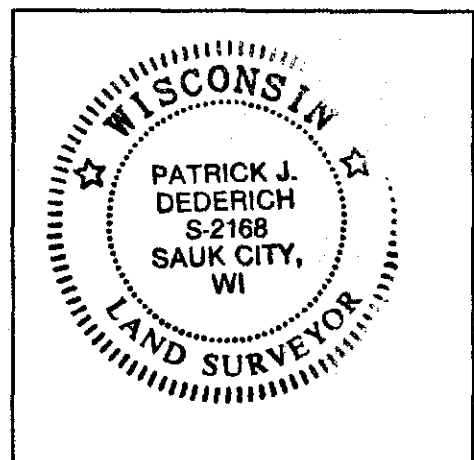
(G & H) WAS THE CORNER REESTABLISHED THROUGH LOST CORNER PROPORTIONATE METHODS? IF SO SHOW THE METHOD, INCLUDING THE DIRECTIONS AND DISTANCES TO OTHER PUBLIC LAND SURVEY CORNERS USED AS EVIDENCE OR USED FOR PROPORTIONING IN DETERMINING THE CORNER LOCATION.

NO.

AFFIX LAND SURVEYOR SEAL

(I) I, PATRICK J. DEDERICH CERTIFY THAT THE LOCATION SHOWN ON THIS RECORD WAS DETERMINED BY ME OR UNDER MY DIRECTION AND CONTROL AND THAT THIS U.S. PUBLIC LAND SURVEY MONUMENT RECORD IS CORRECT AND COMPLETE TO THE BEST OF MY KNOWLEDGE AND BELIEF.

 10/15/2001  
SIGNATURE DATE



2025 2 3 1995

CERTIFIED LAND CORNER

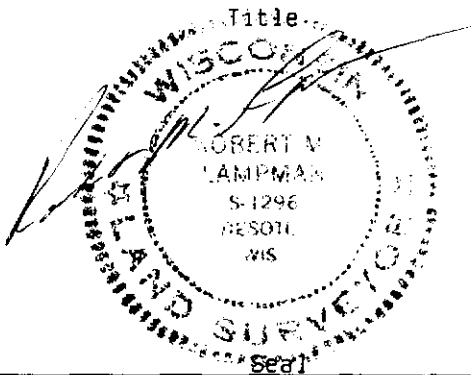
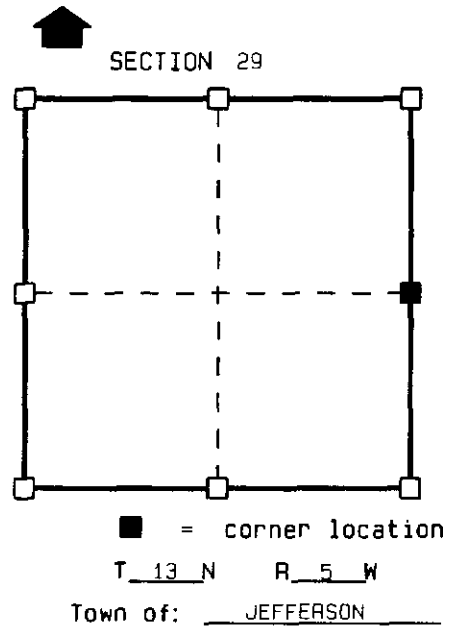
STATE OF WISCONSIN )  
 COUNTY OF VERNON ) S.S.

CERTIFICATE

I, ROBERT M. LAMPMAN, do hereby certify  
 that on the 8th day of AUGUST 1995,  
 I found (~~evidence~~) (no evidence) of the E 1/4  
 corner of SECTION 29, T13 N, R5 W,  
 Fourth Principal Meridian, and I re-established  
 said corner according to the Wisconsin Statutes  
 as shown and described hereon.

Dated this 9th day of AUGUST 1995

ROBERT M. LAMPMAN R.L.S. S-1296



History of original corner establishment:

ORIGINAL CORNER ESTABLISHED BY S.D. DIXON IN 1845.  
 CORNER RENEWED BY W.H. KNOWER IN 1891 DURING A SURVEY IN SECTION 28.

Description of corner evidence found:

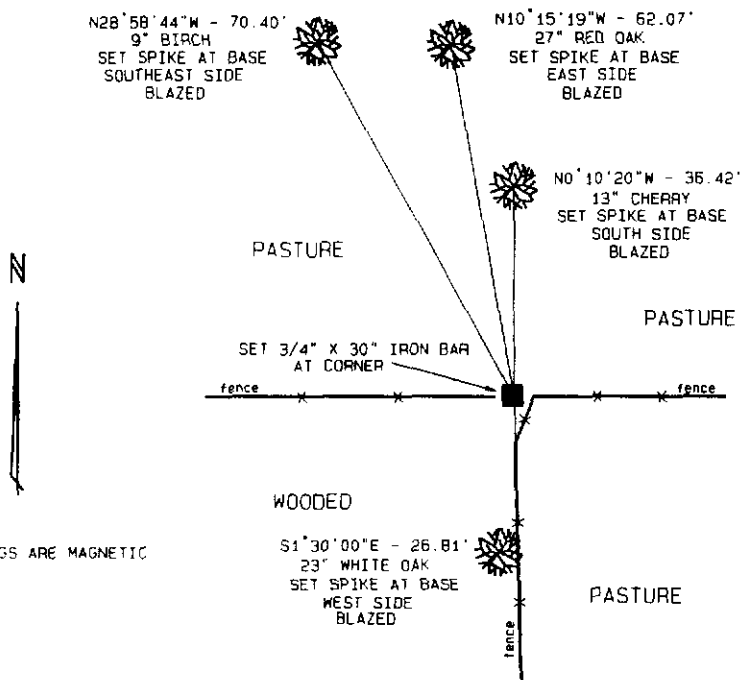
USED OCCUPATIONAL EVIDENCE TO RE-ESTABLISH CORNER LOCATION.

Description of corner and witness monuments, references and accessories used to perpetuate the original or re-established location of this corner:

Witnesses to corner location:

ROBERT M. LAMPMAN  
JESSICA A. ZAMOR  
 \_\_\_\_\_  
 \_\_\_\_\_  
 \_\_\_\_\_

Sketch:



NOTE: BEARINGS ARE MAGNETIC

SURVEY CONTROL ORDER

Horizontal
Vertical

WISCONSIN COORDINATE SYSTEM

Corner	East (X)	North (Y)	Elevation (Z)	Zone
Control Sta. Name				