

# VERNON COUNTY U.S. PUBLIC LAND SURVEY MONUMENT RECORD

INSTRUCTIONS: THIS RECORD SHALL SHOW THE LOCATION OF THE CORNER AND SHALL INCLUDE ALL OF THE FOLLOWING ELEMENTS (A THROUGH I).

(A) IDENTIFY THE CORNER AS REFERENCED TO THE U.S. PUBLIC LAND SURVEY SYSTEM

■ = CORNER MONUMENT RESTORED

WITNESSES TO CORNER LOCATION:

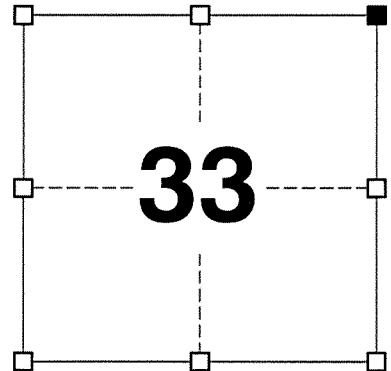
JAY P. ADAMS  
TYLER D. ATKINSON

GEOGRAPHIC COORDINATES,  
NAD 83 (2011) ADJUSTMENT:

LATITUDE: 43° 34' 01.74743"  
LONGITUDE: 90° 58' 08.38264"

WISCONSIN COORDINATE REFERENCE SYSTEM (WISCRS),  
VERNON COUNTY, NAD 83 (2011) ADJUSTMENT:

NORTHING: 153,126.926      NOTE: COORDINATES PROVIDED MEET THE  
EASTING: 680,788.612      DEFINITION OF SURVEY GRADE AS DEFINED BY  
THE WISCONSIN COUNTY SURVEYOR'S ASSN.



SECTION 33  
TOWNSHIP 13 NORTH, RANGE 5 WEST  
TOWN OF JEFFERSON

(B) DESCRIBE ANY RECORD EVIDENCE, MONUMENT EVIDENCE, OCCUPATIONAL EVIDENCE, TESTIMONIAL EVIDENCE OR ANY OTHER MATERIAL EVIDENCE YOU CONSIDERED, AND WHETHER THE MONUMENT WAS FOUND OR PLACED.

I COULD FIND NO MONUMENT FROM THE ORIGINAL GOVERNMENT SURVEY. I RECOVERED THE 3/4" IRON ROD SET BY CROOK. HOWEVER AFTER RECOVERING KNOWER'S 3/4" GALVANIZED GAS PIPE TIE TO THE WEST OF THIS CORNER, I BEGAN A SEARCH FOR THE STONE SET IN 1878 USING KNOWER'S 1891 SURVEY DISTANCE FROM THE GAS PIPE TIE. I RECOVERED A 3" x 12" x 18" STONE TIPPED TO THE NORTH APPROXIMATELY 4 INCHES BELOW THE GROUND SURFACE. IT WAS THE ONLY STONE FOUND IN THE SEARCH AREA AND ITS DISTANCE FROM THE GAS PIPE TIE TO THE WEST MATCHES KNOWER'S DISTANCE VERY WELL. I RESET THE STONE VERTICALLY AND LEFT IT IN PLACE.

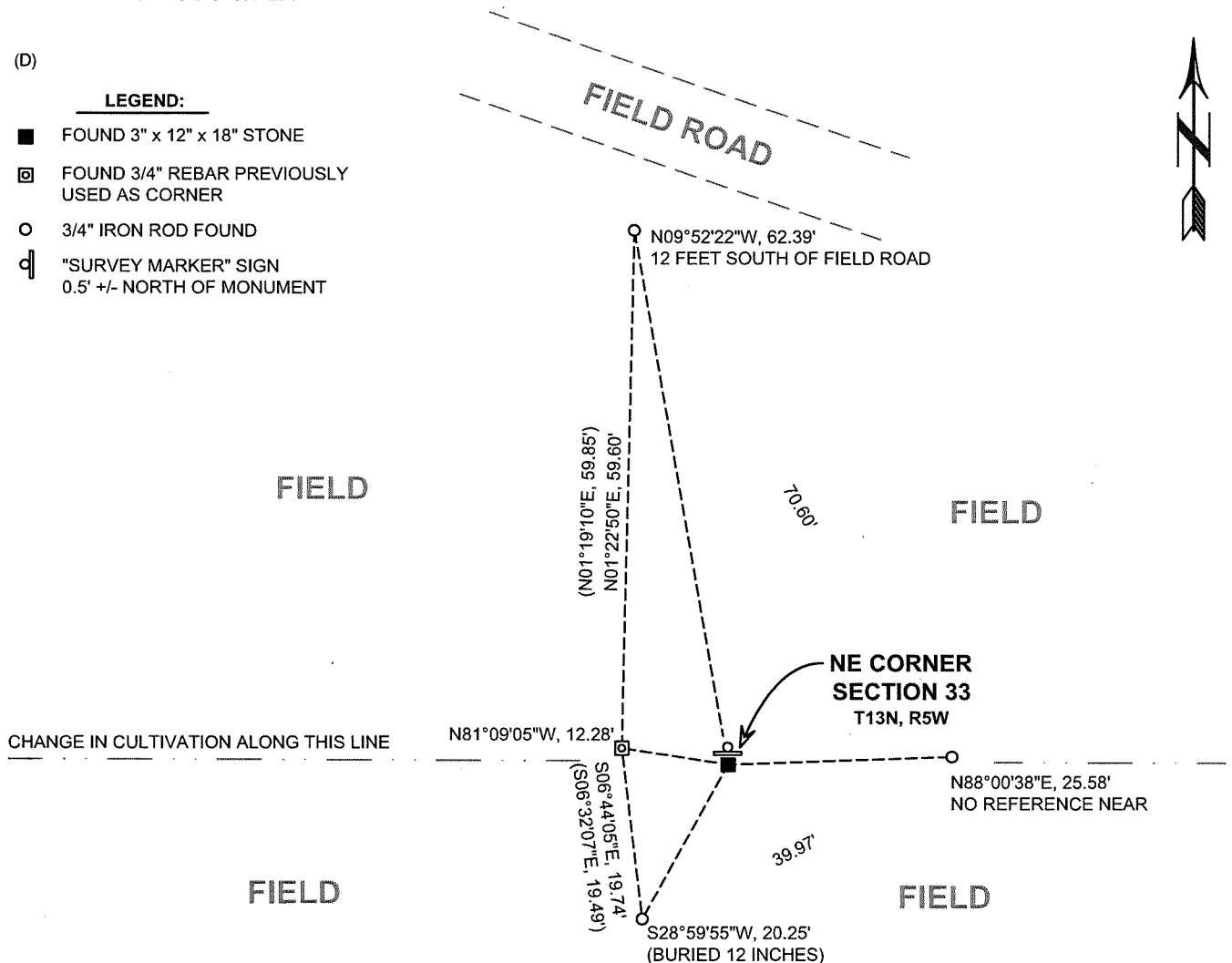
NOTE: I RECOVERED THE PIPE TIE TIPPED TO THE WEST. THE PIPE WAS NOT BENT BUT RATHER THE ENTIRE MONUMENT WAS TIPPED. I SHOT THE PIPE NEAR THE BASE WHERE MY BEST ESTIMATION OF ITS UNDISTURBED LOCATION WOULD HAVE BEEN.

(C) IN THE PLAN VIEW DRAWING BELOW, PROVIDE REFERENCE TIES TO AT LEAST 4 WITNESS MONUMENTS. WITNESS MONUMENTS SHALL BE MADE OF CONCRETE, NATURAL STONE, IRON, BEARING TREES OR ANY OTHER EQUALLY DURABLE MATERIAL. DEPICT THE RELEVANT MONUMENTS AND REFERENCE TIES WITH SUFFICIENT DETAIL TO ENABLE ACCURATE RELOCATION OF THE CORNER IF THE CORNER MONUMENT IS DISTURBED.

(D)

**LEGEND:**

- FOUND 3" x 12" x 18" STONE
- FOUND 3/4" REBAR PREVIOUSLY USED AS CORNER
- 3/4" IRON ROD FOUND
- Ⓧ "SURVEY MARKER" SIGN  
0.5' +/- NORTH OF MONUMENT



(E) DESCRIBE ANY MATERIAL DISCREPANCY BETWEEN THE LOCATION OF THE CORNER AS RESTORED OR REESTABLISHED AND THE LOCATION OF THAT CORNER AS PREVIOUSLY RESTORED OR REESTABLISHED BY DISTANCE AND DIRECTION. SHOW THE DISCREPANCY ON THE PLAN VIEW DRAWING UNDER (D), ABOVE. SHOW THE DISTANCES BETWEEN THE CORNER AS PREVIOUSLY RESTORED OR REESTABLISHED AND (1) THE CORNER AS RESTORED OR REESTABLISHED, AND (2) TO AT LEAST 2 OF THE WITNESS MONUMENTS SHOWN ON THE DRAWING IN (D) ABOVE.

I RECOVERED THE STONE SET BY KNOWER. THE RELATIONSHIP OF THE STONE TO THE 3/4" IRON BAR USED BY SEVERAL PREVIOUS SURVEYORS CAN BE SEEN IN THE SKETCH IN SECTION (D).

(F) WAS THE CORNER RESTORED THROUGH ACCEPTANCE OF (1) AN OBLITERATED EVIDENCE LOCATION, OR (2) A FOUND PERPETUATED LOCATION?

(2) A FOUND PERPETUATED LOCATION.

(G&H) WAS THE CORNER REESTABLISHED THROUGH LOST CORNER PROPORTIONATE METHODS? IF SO, SHOW THE METHOD, INCLUDING THE DIRECTIONS AND DISTANCES TO OTHER PUBLIC LAND SURVEY CORNERS USED AS EVIDENCE OR USED FOR PROPORTIONING IN DETERMINING THE CORNER LOCATION.

N/A

CORNER HISTORY

THE ORIGINAL GOVERNMENT CORNER WAS ESTABLISHED BY SAMUEL DIXON IN JULY 1845.

IN A SURVEY DATED 29 JUNE 1878, WILLIAM KNOWER SET A STONE AT THE CORNER.

IN A SURVEY DATED 10 JANUARY 1891, WILLIAM KNOWER WAS AGAIN AT THE CORNER. IN THIS SAME SURVEY, HE SET A 3/4" GALVANIZED GAS PIPE AS A TIE TO A 1/16TH CORNER A QUARTER MILE WEST OF THIS CORNER.

IN A TIE PLAT OF SURVEY DATED 15 JUNE 1992, F. CURTIS CROOK SET A 3/4" REBAR AT THE CORNER.

IN A TIE SHEET AND PLAT OF SURVEY DATED MARCH 1992, CROOK AGAIN NOTES A 3/4" IRON BAR AT THE CORNER.

IN A PLAT OF SURVEY DATED 29 MAY 2001, CROOK NOTES A 3/4" IRON BAR AT THE CORNER.

IN A PLAT OF SURVEY DATED 25 JUNE 2014, RONALD GRANGER FOUND A 3/4" IRON ROD AT THE CORNER.

1/16TH CORNER  
BASED ON:  
3/4" I.D. x 30" GAS  
PIPE TIE FOUND  
N62°E, 6.6'  
(KNOWER, 1891)

PIPE:  
N: 153,130.650  
E: 679,481.769

NORTH LINE - NE 1/4 - NE 1/4 SECTION 33

NE CORNER  
SECTION 33  
T13N, R5W



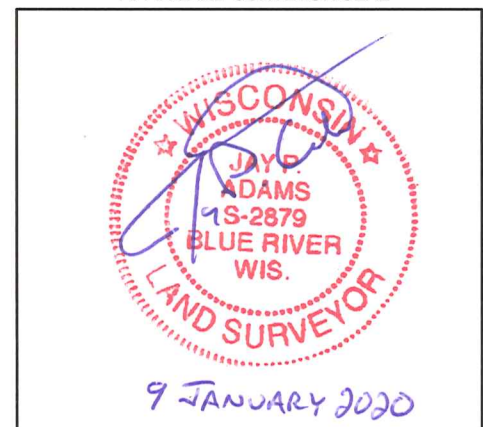
1/16TH CORNER:  
N: 153,127.552  
E: 679,475.942

S89°58'22"E, 1312.67'  
(1311.75 - KNOWER, 1891)

3" x 12" x 18"  
STONE FOUND  
(KNOWER, 1878)



AFFIX LAND SURVEYOR SEAL



(I) I, JAY P. ADAMS, P.L.S. - 2879, CERTIFY THAT THE CORNER LOCATION SHOWN ON THIS RECORD WAS DETERMINED BY ME OR UNDER MY DIRECTION AND CONTROL AND THAT THIS U.S. PUBLIC LAND SURVEY MONUMENT RECORD IS CORRECT AND COMPLETE TO THE BEST OF MY KNOWLEDGE AND BELIEF.

SIGNATURE

9 JANUARY 2020

DATE

RECEIVED  
 MAR 20 2002  
 BY: *[Signature]*

VERNON COUNTY  
 CERTIFIED U.S. PUBLIC LAND SURVEY MONUMENT RECORD

INSTRUCTIONS: THIS RECORD SHALL SHOW THE LOCATION OF THE CORNER AND SHALL INCLUDE ALL OF THE FOLLOWING ELEMENTS (A-I)

(A) IDENTIFY THE CORNER BY REFERENCE TO THE U.S. PUBLIC LAND SURVEY SYSTEM

NE Section 33, T13N, R5W

☐ = CORNER MONUMENT RESTORED

WITNESSES TO CORNER LOCATION:

- 1) Curtis Crook
- 2) Chad Crook
- 3) Brenda Crook

STATE PLANE COORDINATES (WISCONSIN SOUTH ZONE)

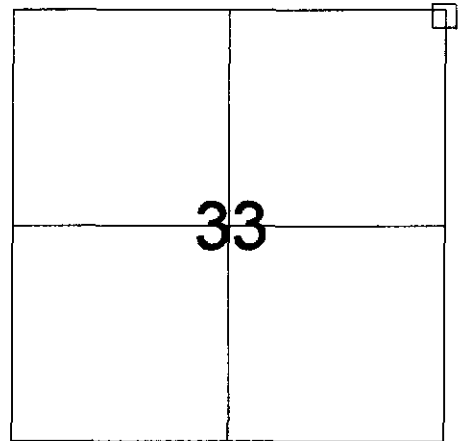
NORTHING:

EASTING:

VERNON COUNTY COORDINATES

NORTHING:

EASTING:



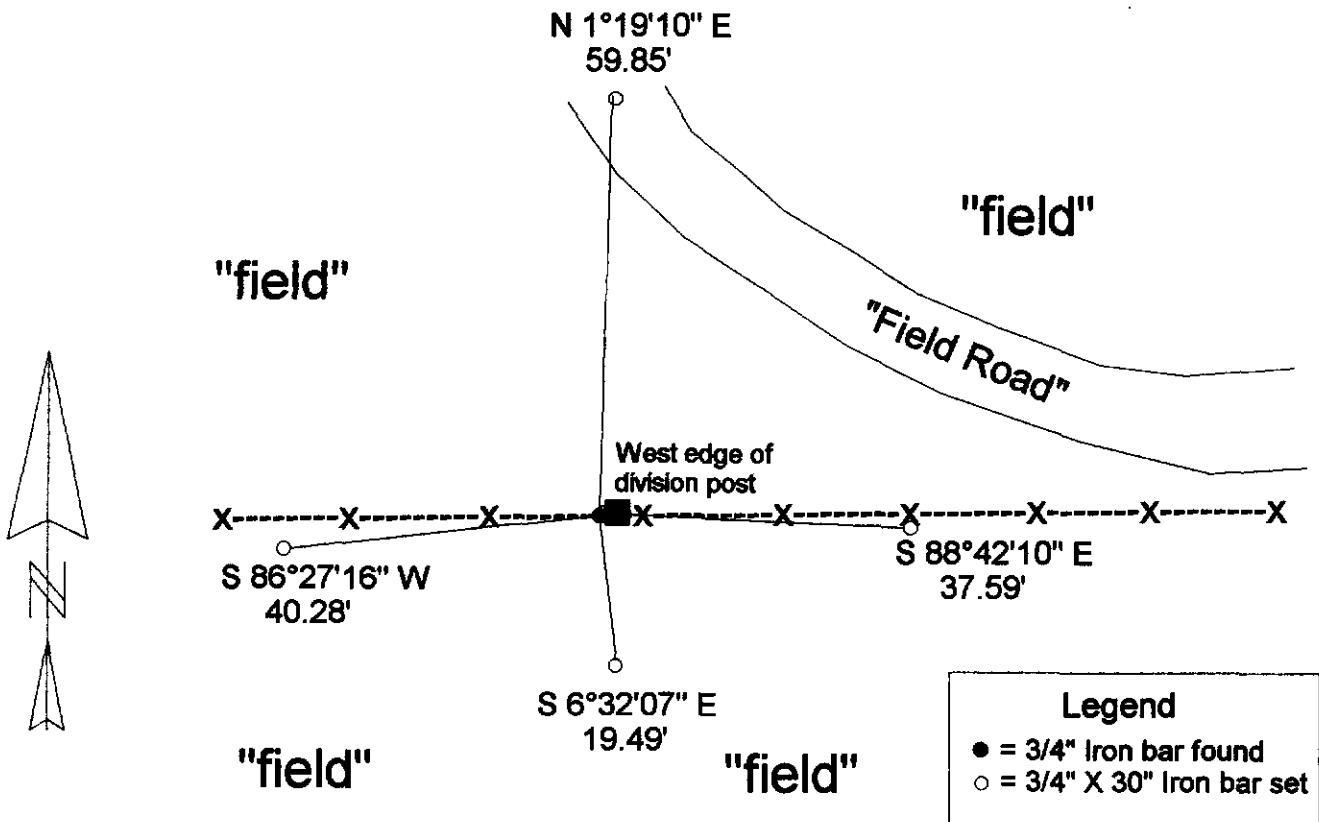
SECTION 33, TOWN 13 NORTH, RANGE 5 WEST

(B) DESCRIBE ANY RECORD EVIDENCE, MONUMENT EVIDENCE, OCCUPATIONAL EVIDENCE, TESTIMONIAL EVIDENCE OR ANY OTHER MATERIAL EVIDENCE YOU CONSIDERED, AND WHETHER THE MONUMENT WAS FOUND OR PLACED.

Found 3/4" Iron bar on East/West fenceline near Division post. Fit section measurements well; Accepted as corner.

(C) IN THE PLAN VIEW DRAWING BELOW, PROVIDE REFERENCE TIES TO AT LEAST 4 WITNESS MONUMENTS OR, IF THE LOCATION IS WITHIN A MUNICIPALITY, TO AT LEAST 2 WITNESS MONUMENTS. (WITNESS MONUMENTS SHALL BE MADE OF CONCRETE, NATURAL STONE, IRON, OR OTHER EQUALLY DURABLE MATERIAL.) DESCRIBE WITNESS MONUMENTS.

(D) SHOW A PLAN VIEW DRAWING, DEPICTING THE RELEVANT MONUMENTS AND REFERENCE TIES, WHICH IS SUFFICIENTLY DETAILED TO ENABLE ACCURATE RELOCATION OF THE CORNER MONUMENT IF IT IS DISTURBED.



(E) DESCRIBE ANY MATERIAL DISCREPENCY BETWEEN THE LOCATION OF THE CORNER AS RESTORED OR REESTABLISHED AND THE LOCATION OF THAT CORNER AS PREVIOUSLY RESTORED OR REESTABLISHED BY DISTANCE AND DIRECTION. SHOW THE DISCREPENCY ON THE PLAN VIEW DRAWING UNDER (D), ABOVE. SHOW THE DISTANCES BETWEEN THE CORNER AS PREVIOUSLY RESTORED OR REESTABLISHED AND (1) THE CORNER AS RESTORED OR REESTABLISHED, AND (2) TO AT LEAST 2 OF THE WITNESS MONUMENTS AS SHOWN ON THE DRAWING IN (D), ABOVE.

None Found

(F) WAS THE CORNER RESTORED THROUGH ACCEPTANCE OF (1) AN OBLITERATED EVIDENCE LOCATION, OR (2) A FOUND PERPETUATED LOCATION?

A found perpetuated location.

(G & H) WAS THE CORNER REESTABLISHED THROUGH LOST CORNER PROPORTIONED METHODS? IF SO SHOW THE METHOD, INCLUDING THE DIRECTION AND DISTANCES TO OTHER PUBLIC LAND SURVEY CORNERS USED AS EVIDENCE OR USED FOR PROPORTIONING IN DETERMINING THE CORNER LOCATION.

Not Applicable

AFFIX LAND SURVEYOR SEAL

(I) I, F. CURTIS CROOK, CERTIFY THAT THE LOCATION SHOWN ON THIS RECORD WAS DETERMINED BY ME OR UNDER MY DIRECTION AND CONTROL AND THAT THIS U.S. PUBLIC LAND SURVEY MONUMENT RECORD IS CORRECT AND COMPLETE TO THE BEST OF MY KNOWLEDGE AND BELIEF.

F. Curtis Crook 3-19-02  
SIGNATURE DATE

