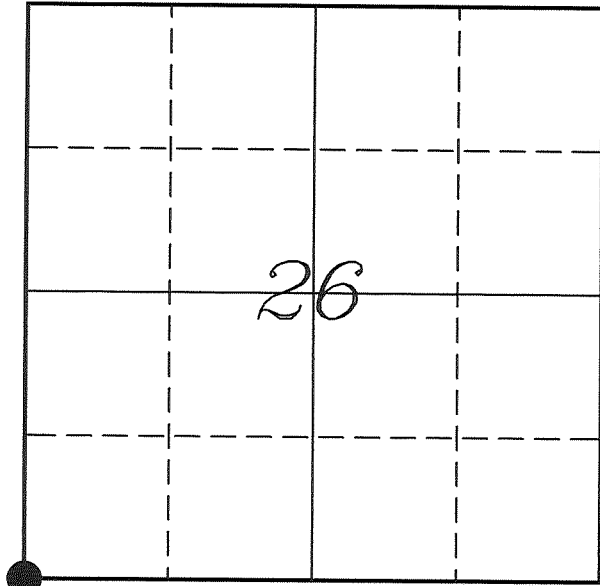

U. S. PUBLIC LAND SURVEY MONUMENT RECORD

SECTION 26, T13N, R5W, TOWN OF JEFFERSON VERNON COUNTY, WISCONSIN



LOCATION OF LANDMARK

Crew: Laurence E Johns III
Larry Handschy

Date: 23 November 2010

VERNON COUNTY COORDINATE SYSTEM	
Northing	153121.284
Easting	686079.590
Datum	NAD 1983 (2007)
Elevation	
Datum	
TYPE OF LANDMARK:	
Set 1 1/4" x 18" Iron Rod	
BEARINGS ARE REFERENCED TO:	
Vernon County Coordinates	

Describe any record evidence, monument evidence, testimonial evidence or any other material evidence you considered and whether the monument was found or restored through acceptance of an obliterated evidence location.

No bearing trees of record were located.

The only occupation that I could find for this corner was South of this location approximately a half '40' distance. This fence runs South from that location.

The travelled centerline of Springville Road does not appear to run the West line of Section 26. The W 1/4 Corner of 26 is to the West of the centerline and this corner is East of it.

All the information that I was able to find conflicted with each other. The location I chose is based on the traveled centerline of STH '56' and double the distance from the S 1/4 Corner and SW Corner of Section 27. This location fits the fence mentioned above to about 2 feet.

I accepted this location as the best available evidence of the original government corner and set a 1 1/4" Rod due to it falling in the pavement of Hwy 56.

Describe or show any material discrepancy between the location of the restored corner and that of the corner previously restored or re-established.

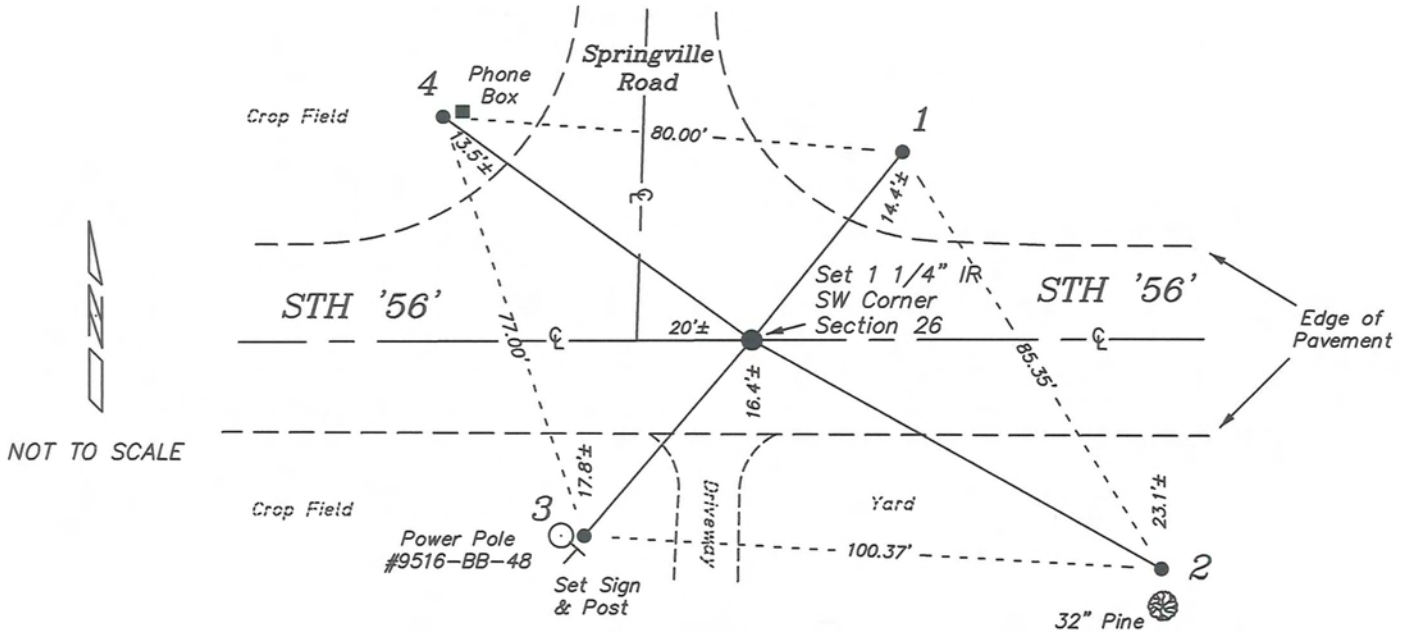
Samuel D Dixon established this corner in July 1845.

Wm Knower was at this corner, in June 1882, during surveys in Sections 27 & 34. He shows that he found the government corner.

Wm Knower was at this corner again, in May 1883, during a survey in Section 35.

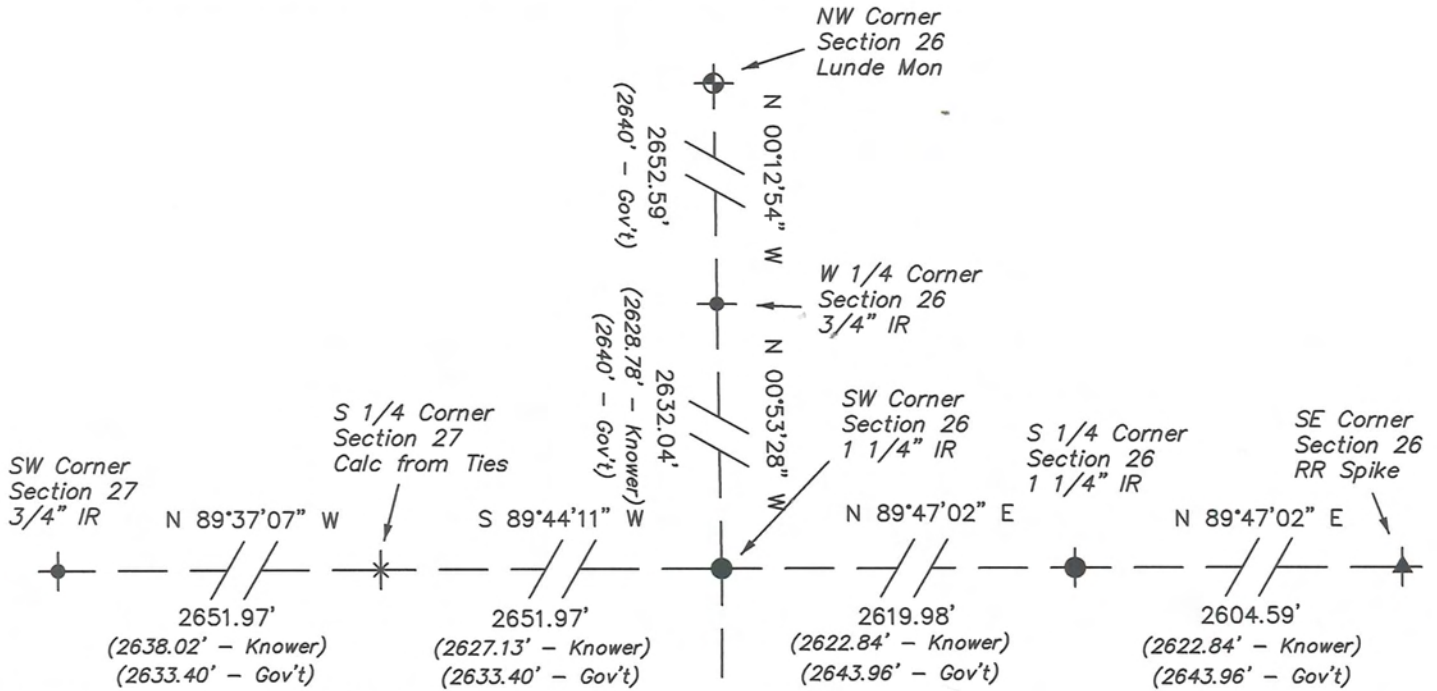
RECORD OF DURABLE WITNESS MONUMENTS

NO	DESCRIPTION	BEARING	DISTANCE
1	Set 3/4" x 18" Iron Rod	N 38°33'19" E	42.04'
2	Set 3/4" x 18" Iron Rod 2' North of a 32" Pine	S 60°48'30" E	81.44'
3	Set 3/4" x 18" Iron Rod 1' East of Power Pole #9516-BB-48	S 40°28'47" W	44.85'
4	Set 3/4" x 18" Iron Rod West Side of Phone Box	N 54°00'31" W	66.21'

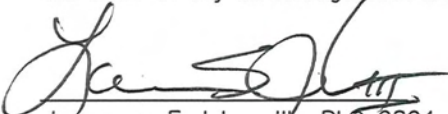


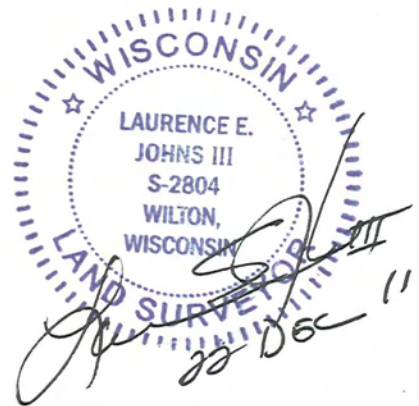
PLAN VIEW DRAWING OF REFERENCE TIES

Map Showing Distance And Direction To Other Public Land Survey Corners Used For Re-Establishing The Corner



I, Laurence E Johns III RLS 2804, Registered Land Surveyor, hereby certify that the corner location shown on this record was determined by me or under my direction and control, and that this U.S. Public Land Survey Monument Record is correct and complete to the best of my knowledge and belief.


 Laurence E Johns III RLS 2804
 Eagle Ridge Surveying, LLC
 PO Box 213
 Wilton, Wisconsin
 22 December 2011



VERNON COUNTY COORDINATE SUBMISSION FORM
 "As An Addendum To"
VERNON COUNTY
CERTIFIED U.S. PUBLIC LAND SURVEY MONUMENT RECORD

INSTRUCTIONS: THIS RECORD FORM SHOULD BE USED WHEN COORDINATES ARE PROVIDED FOR A PUBLIC LAND SURVEY CORNER AND SHALL INCLUDE ALL OF THE FOLLOWING ELEMENTS (A-D)

(A) IDENTIFY THE CORNER BY REFERENCE TO THE U.S. PUBLIC LAND SURVEY SYSTEM IN DIAGRAM AT RIGHT

● = CORNER MONUMENT



T 13 N, R 5 W

(B) COORDINATES:

GEOGRAPHIC (Degrees Minutes Seconds)

LATITUDE: 43° 34' 01.8022" N

LONGITUDE: 90° 56' 56.5213" W

ELLIPSOID HT (m): _____

DATUM: NAD 1983 (2007)

GEOID03 ADJ: -32.463

ORTHOMETRIC HT: _____

VERNON COUNTY (U.S. FEET)

Coord Quality (+/-)

NORTHING (Y): 153121.284 _____

EASTING (X): 686079.590 _____

GPS METHOD USED TO COMPUTE COORDINATES (check as applicable)

RTK Observations Static Baselines OPUS-RS Solution OPUS-S Solution

Combination of GPS Observations & Conventional Procedures

Single Angle Measurement Closed Traverse Loop

Was a Least Squares Adjustment Used to Compute Coordinates? Yes / No

BASE CONTROL USED FOR COORDINATE COMPUTATION

Station Name	Station Coordinates	Date/Time
<u>OPUS Station - TS 01</u>	<u>43° 34' 00.5128" N 90° 56' 12.6619" W</u>	<u>11/23/2011 - 13:55</u>
	<u>N - 152984.526 E - 689308.606</u>	
<u>Same</u>		<u>11/28/2011 - 15:05</u>

(C) REASON FOR COORDINATES SUBMITTAL (check one)

Being Filed With a New U.S. PLS Monument Record

To Correct the Coordinates Listed on a Previously Filed PLS Monument Record

To Provide Coordinates for Previously Filed PLS Monument Record without Coordinates

To Provide Supplemental Coordinates for a Previously Filed PLS Monument Record

MOST RECENT PLS MONUMENT RECORD DATE:


R.L.S. WHO CREATED MOST RECENT PLS MONUMENT RECORD:

(D) AGENT(S) PERFORMING GPS OBSERVATIONS & COORDINATE COMPUTATION

1) LAURENCE E JOHNS III

2) _____

I, LAURENCE E JOHNS III RLS 2804, REGISTERED LAND SURVEYOR, HEREBY CERTIFY THAT THE COORDINATES PROVIDED ON THIS RECORD WERE DETERMINED BY ME OR UNDER MY DIRECTION AND CONTROL AND THAT THIS COORDINATE SUBMISSION FORM IS CORRECT AND COMPLETE TO THE BEST OF MY KNOWLEDGE AND BELIEF.


 Laurence E Johns III RLS 2804
 Eagle Ridge Surveying, LLC
 PO Box 213
 Wilton, Wisconsin
 22 December 2011

