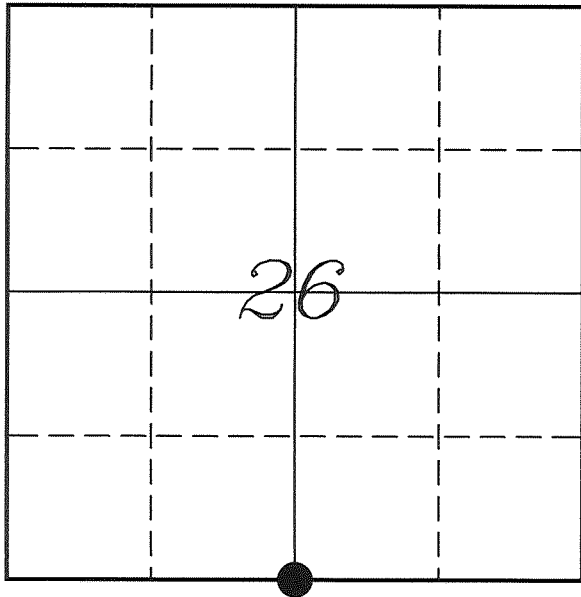


---

# U. S. PUBLIC LAND SURVEY MONUMENT RECORD

---

## SECTION 26, T13N, R5W, TOWN OF JEFFERSON VERNON COUNTY, WISCONSIN



LOCATION OF LANDMARK

Crew: Laurence E Johns III  
Larry Handschy

Date: 23 November 2010

VERNON COUNTY COORDINATE SYSTEM	
Northing	153131.071
Easting	688699.567
Datum	NAD 1983 (2007)
Elevation	
Datum	
TYPE OF LANDMARK:	
Set 1 1/4" x 18" Iron Rod	
BEARINGS ARE REFERENCED TO:	
Vernon County Coordinates	

---

*Describe any record evidence, monument evidence, testimonial evidence or any other material evidence you considered and whether the monument was found or restored through acceptance of an obliterated evidence location.*

No bearing trees of record were located.

This corner lands in the middle of STH '56'. The stone placed by Knower would have been destroyed by construction of the Highway.

Placed this corner at a straight line between the SW & SE Corners of Section 26 and in line with the fence to the North. This fence runs from just South of the N 1/4 Corner to just North of this corner. This fence is straight for its entire length. This location is approximately 3' North of the traveled centerline.

Accepted this corner as the best available evidence of the original government corner and place a 1 1/4" Iron Rod due to it being in the pavement of the highway.

---

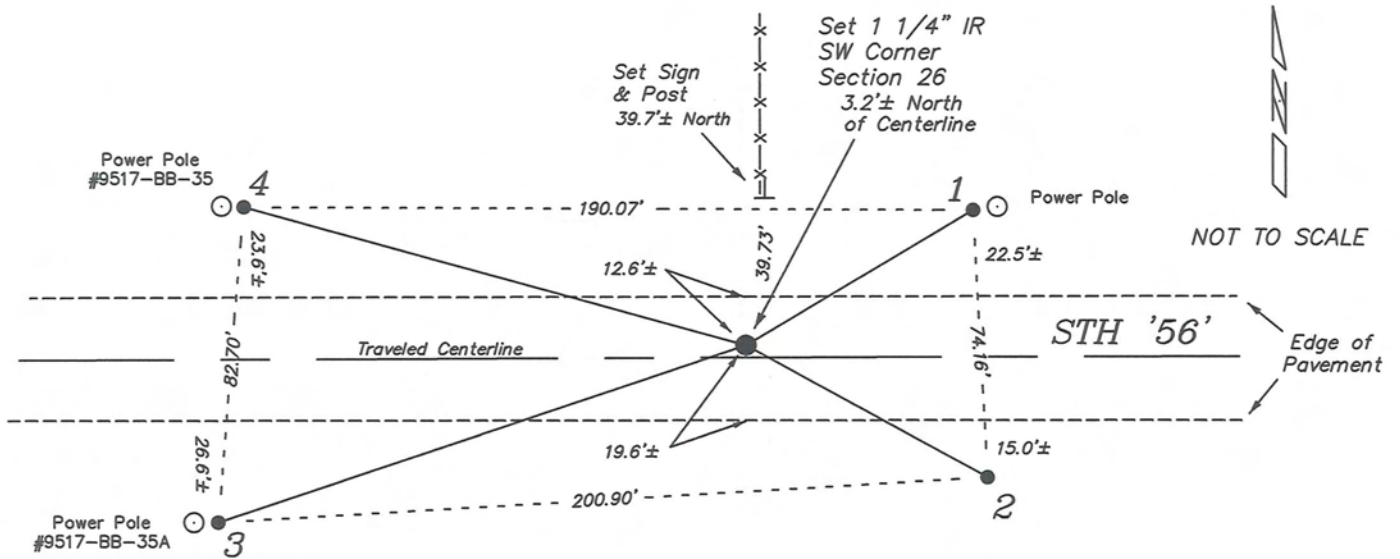
*Describe or show any material discrepancy between the location of the restored corner and that of the corner previously restored or re-established.*

Samuel D Dixon established this corner in July 1845.

Wm Knower was at this corner, in May 1883, during a survey in Section 35. He shows that he re-set this corner at mid-distance and placed a stone at the corner.

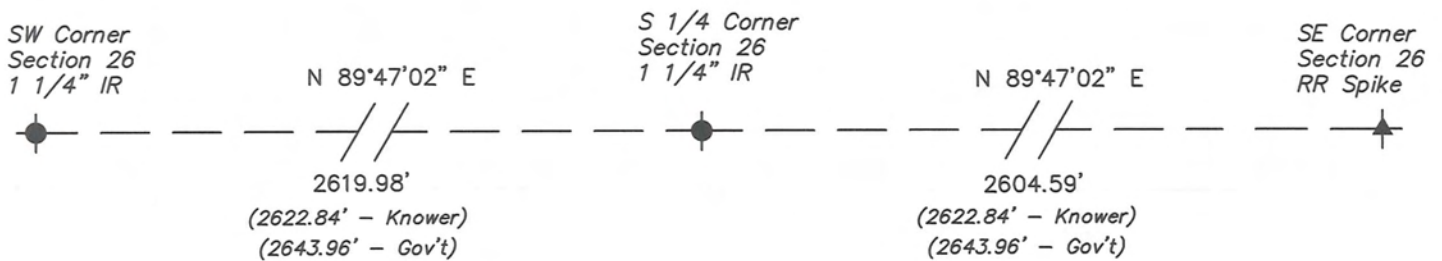
## RECORD OF DURABLE WITNESS MONUMENTS

NO	DESCRIPTION	BEARING	DISTANCE
1	Set 3/4" x 18" Iron Rod 1' West of Power Pole (No Number)	N 59°11'16" E	68.93'
2	Set 3/4" x 18" Iron Rod Top of Ditch Bank	S 61°17'57" E	71.70'
3	Set 3/4" x 18" Iron Rod 1' East of Power Pole #9517-BB-35A	S 71°21'26" W	145.28'
4	Set 3/4" x 18" Iron Rod 1' East of Power Pole #9517-BB-35	N 74°37'44" W	135.72'

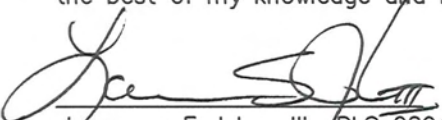


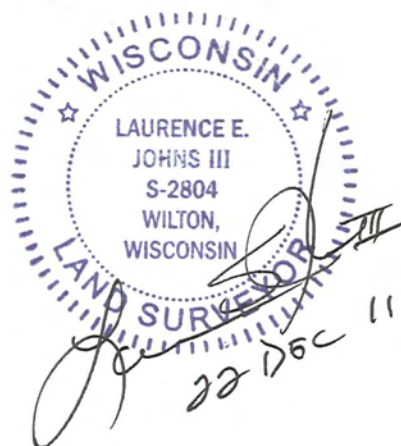
## PLAN VIEW DRAWING OF REFERENCE TIES

Map Showing Distance And Direction To Other Public Land Survey  
Corners Used For Re-Establishing The Corner



I, Laurence E Johns III RLS 2804, Registered Land Surveyor, hereby certify that the corner location shown on this record was determined by me or under my direction and control, and that this U.S. Public Land Survey Monument Record is correct and complete to the best of my knowledge and belief.

  
 Laurence E Johns III RLS 2804  
 Eagle Ridge Surveying, LLC  
 PO Box 213  
 Wilton, Wisconsin  
 22 December 2011

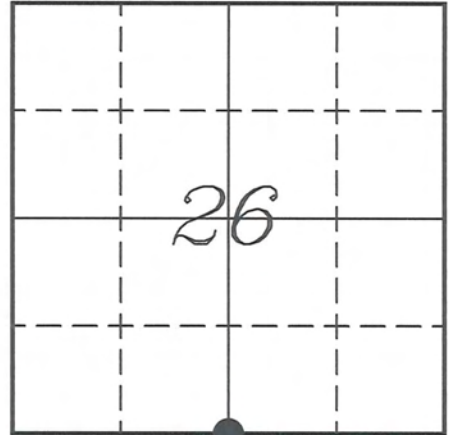


**VERNON COUNTY COORDINATE SUBMISSION FORM**  
 "As An Addendum To"  
**VERNON COUNTY**  
**CERTIFIED U.S. PUBLIC LAND SURVEY MONUMENT RECORD**

INSTRUCTIONS: THIS RECORD FORM SHOULD BE USED WHEN COORDINATES ARE PROVIDED FOR A PUBLIC LAND SURVEY CORNER AND SHALL INCLUDE ALL OF THE FOLLOWING ELEMENTS (A-D)

(A) IDENTIFY THE CORNER BY REFERENCE TO THE U.S. PUBLIC LAND SURVEY SYSTEM IN DIAGRAM AT RIGHT

● = CORNER MONUMENT



(B) COORDINATES:

GEOGRAPHIC (Degrees Minutes Seconds)

LATITUDE: 43° 34' 01.9489" N

LONGITUDE: 90° 56' 20.9375" W

ELLIPSOID HT (m): \_\_\_\_\_

DATUM: NAD 1983 (2007)

GEOID03 ADJ: -32.501

ORTHOMETRIC HT: \_\_\_\_\_

VERNON COUNTY (U.S. FEET)

Coord Quality (+/-)

NORTHING (Y): 153131.071 \_\_\_\_\_

EASTING (X): 688699.567 \_\_\_\_\_

GPS METHOD USED TO COMPUTE COORDINATES (check as applicable)

RTK Observations     Static Baselines     OPUS-RS Solution     OPUS-S Solution

Combination of GPS Observations & Conventional Procedures

Single Angle Measurement     Closed Traverse Loop

Was a Least Squares Adjustment Used to Compute Coordinates? Yes /  No

BASE CONTROL USED FOR COORDINATE COMPUTATION

Station Name	Station Coordinates	Date/Time
<u>OPUS Station - TS 01</u>	<u>43° 34' 00.5128" N 90° 56' 12.6619" W</u>	<u>11/23/2011 - 13:04</u>
	<u>N - 152984.526 E - 689308.606</u>	
<u>Same</u>		<u>11/28/2011 - 14:52</u>

(C) REASON FOR COORDINATES SUBMITTAL (check one)

Being Filed With a New U.S. PLS Monument Record

To Correct the Coordinates Listed on a Previously Filed PLS Monument Record

To Provide Coordinates for Previously Filed PLS Monument Record without Coordinates

To Provide Supplemental Coordinates for a Previously Filed PLS Monument Record

MOST RECENT PLS MONUMENT RECORD DATE:

R.L.S. WHO CREATED MOST RECENT PLS MONUMENT RECORD:

(D) AGENT(S) PERFORMING GPS OBSERVATIONS & COORDINATE COMPUTATION

1) LAURENCE E JOHNS III

2) \_\_\_\_\_

I, LAURENCE E JOHNS III RLS 2804, REGISTERED LAND SURVEYOR, HEREBY CERTIFY THAT THE COORDINATES PROVIDED ON THIS RECORD WERE DETERMINED BY ME OR UNDER MY DIRECTION AND CONTROL AND THAT THIS COORDINATE SUBMISSION FORM IS CORRECT AND COMPLETE TO THE BEST OF MY KNOWLEDGE AND BELIEF.

Laurence E Johns III RLS 2804  
 Eagle Ridge Surveying, LLC  
 PO Box 213  
 Wilton, Wisconsin  
 22 December 2011

