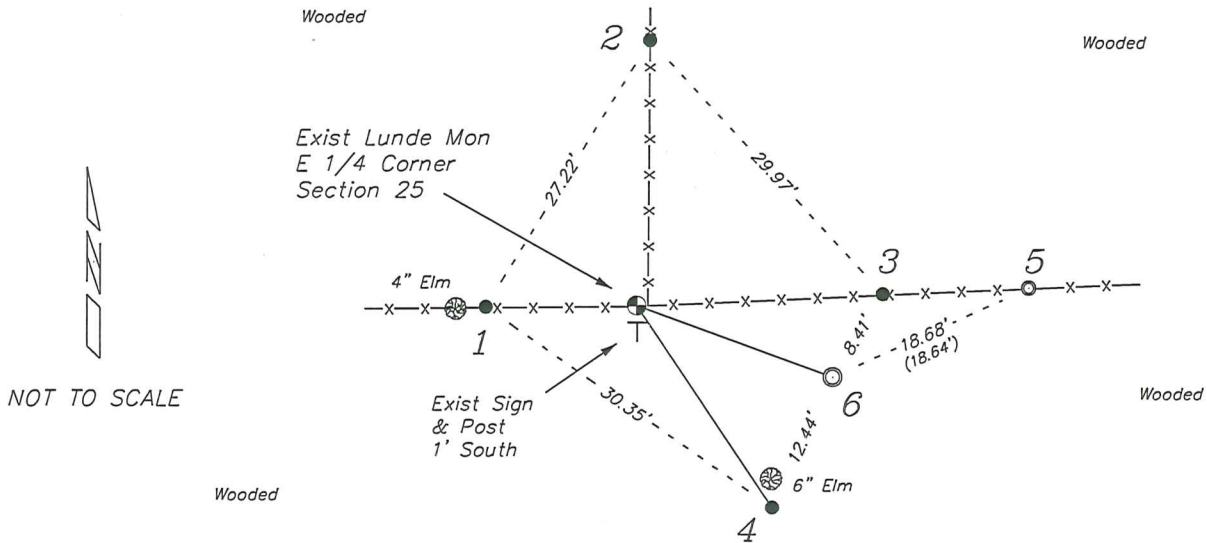


RECORD OF DURABLE WITNESS MONUMENTS

NO	DESCRIPTION	BEARING	DISTANCE
1	Existing 3/4" Iron Rod In Fence - 2' East of a 4" Elm	(S 90° W) S 89°33'59" W	(13.16') 13.08'
2	Existing 3/4" Iron Rod In Fence at Underground Cable Sign	(N 00° E) N 02°47'30" E	(23.30') 23.14'
3	Existing 3/4" Iron Rod In Fence Line	(N 90° E) N 87°20'56" E	(21.50') 21.36'
4	Existing 3/4" Iron Rod 3' South of a 6" Elm	(S 30° E) S 33°56'20" E	(21.05') 21.10'
5	Existing 3/4" Iron Pipe In Fence Line	N 87°28'58" E	34.04'
6	Existing 2" Iron Pipe Corner set by D Holman	S 69°54'43" E	(18.20') 18.09'

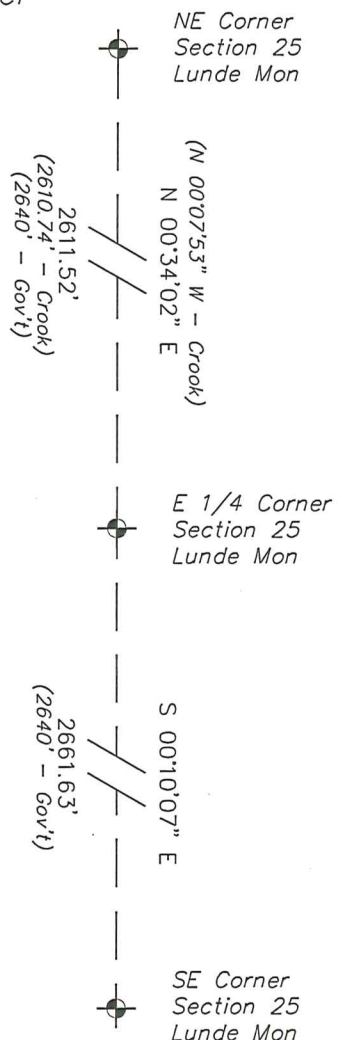


PLAN VIEW DRAWING OF REFERENCE TIES

Map Showing Distance And Direction To Other Public Land Survey Corners Used For Re-Establishing The Corner

Note:
Measurements were not made to this corner at this time.

Bearings and distances shown are based on recorded information and shown for reference.



I, Laurence E Johns III PLS 2804, Professional Land Surveyor, hereby certify that the corner location shown on this record was determined by me or under my direction and control, and that this U.S. Public Land Survey Monument Record is correct and complete to the best of my knowledge and belief.

Vernon County Certified U.S. Public Land Survey Monument Record

INSTRUCTIONS: THIS RECORD SHALL SHOW THE LOCATION OF THE CORNER AND SHALL INCLUDE ALL OF THE FOLLOWING ELEMENTS (A-I)

(A) IDENTIFY THE CORNER BY REFERENCE TO THE U.S. PUBLIC LAND SURVEY SYSTEM

■ = CORNER MONUMENT RESTORED

WITNESSES TO CORNER LOCATION:

- 1) Kenny Reinhart
- 2) Neil Baldwin
- 3)

STATE PLANE COORDINATES (WISCONSIN SOUTH ZONE)

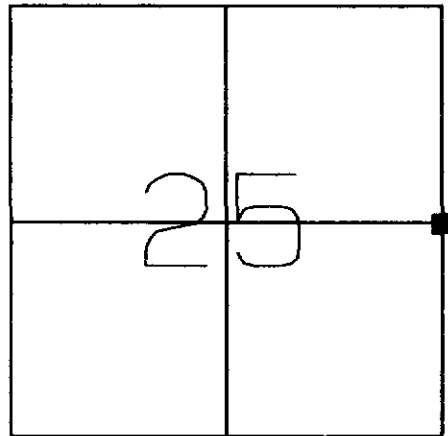
NORTHING:

EASTING:

VERNON COUNTY COORDINATES

NORTHING: 155,818.38

EASTING: 696,488.22



SECTION 25, TOWN 13 NORTH, RANGE 5 WEST
Jefferson Township

(B) DESCRIBE ANY RECORD EVIDENCE, MONUMENT EVIDENCE, OCCUPATIONAL EVIDENCE, TESTIMONIAL EVIDENCE OR ANY OTHER MATERIAL EVIDENCE YOU CONSIDERED, AND WHETHER THE MONUMENT WAS FOUND OR PLACED.

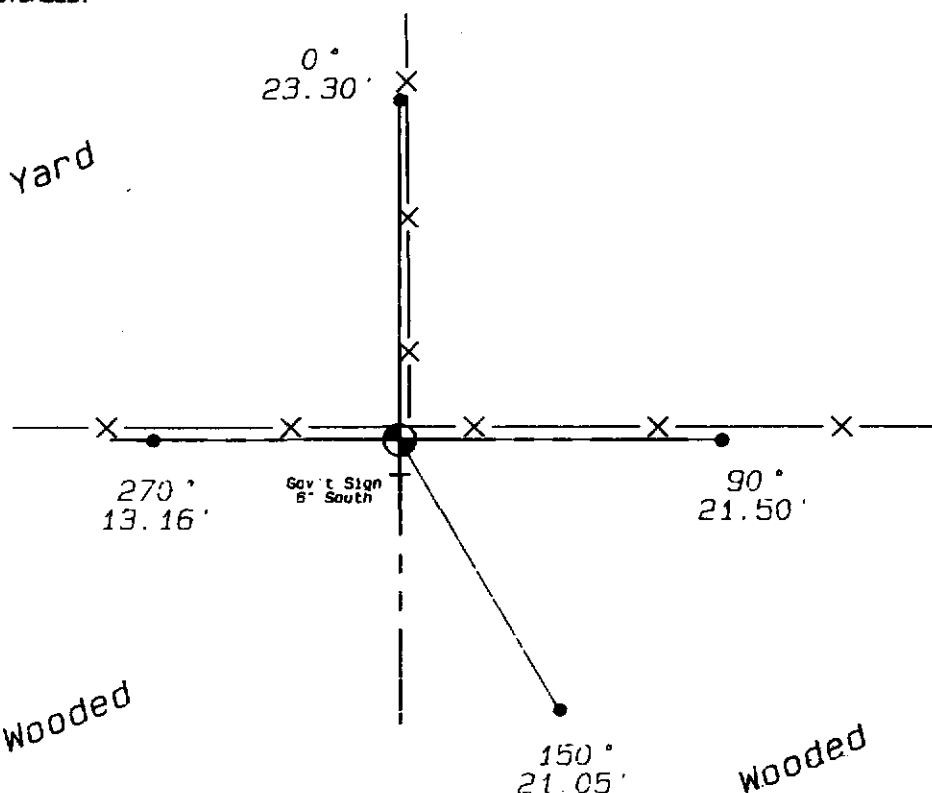
Replaced found 1 1/2" Iron Pipe at occupied fence corner with a Vernon County Monument.

(C) IN THE PLAN VIEW DRAWING BELOW, PROVIDE REFERENCE TIES TO AT LEAST 4 WITNESS MONUMENTS OR, IF THE LOCATION IS WITHIN A MUNICIPALITY, TO AT LEAST 2 WITNESS MONUMENTS. (WITNESS MONUMENTS SHALL BE MADE OF CONCRETE, NATURAL STONE, IRON, OR OTHER EQUALLY DURABLE MATERIAL.) DESCRIBE WITNESS MONUMENTS.

(D) SHOW A PLAN VIEW DRAWING, DEPICTING THE RELEVANT MONUMENTS AND REFERENCE TIES, WHICH IS SUFFICIENTLY DETAILED TO ENABLE ACCURATE RELOCATION OF THE CORNER MONUMENT IF IT IS DISTURBED.

*Azimuths are magnetic
Not to scale*

- Set 3/4"x30" Iron Rebar



(E) DESCRIBE ANY MATERIAL DISCREPANCY BETWEEN THE LOCATION OF THE CORNER AS RESTORED OR REESTABLISHED AND THE LOCATION OF THAT CORNER AS PREVIOUSLY RESTORED OR REESTABLISHED BY DISTANCE AND DIRECTION. SHOW THE DISCREPANCY ON THE PLAN VIEW DRAWING UNDER (D), ABOVE. SHOW THE DISTANCES BETWEEN THE CORNER AS PREVIOUSLY RESTORED OR REESTABLISHED AND (1) THE CORNER AS RESTORED OR REESTABLISHED, AND (2) TO AT LEAST 2 OF THE WITNESS MONUMENTS AS SHOWN ON THE DRAWING IN (D), ABOVE.

(NA)

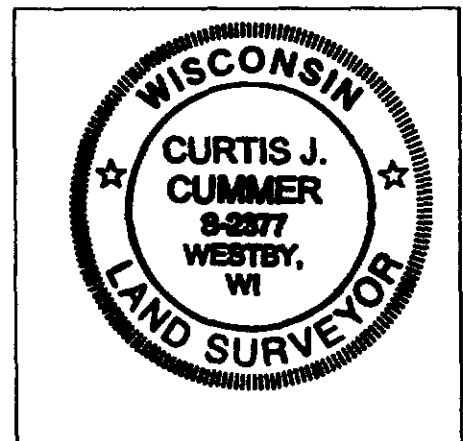
(F) WAS THE CORNER RESTORED THROUGH ACCEPTANCE OF (1) AN OBLITERATED EVIDENCE LOCATION, OR (2) A FOUND PERPETUATED LOCATION?

(2)

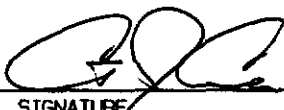
(G & H) WAS THE CORNER REESTABLISHED THROUGH LOST CORNER PROPORTIONATE METHODS? IF SO SHOW THE METHOD, INCLUDING THE DIRECTION AND DISTANCES TO THE OTHER PUBLIC LAND SURVEY CORNERS USED AS EVIDENCE OR USED FOR PROPORTIONING IN DETERMINING THE CORNER LOCATION.

(NA)

LAND SURVEYOR SEAL



(I) I, Curtis J. Cummer, CERTIFY THAT THE LOCATION SHOWN ON THIS RECORD WAS DETERMINED BY ME OR UNDER MY DIRECTION AND CONTROL AND THAT THIS U.S. PUBLIC LAND SURVEY MONUMENT RECORD IS CORRECT AND COMPLETE TO THE BEST OF MY KNOWLEDGE AND BELIEF.



SIGNATURE

6/8/05

DATE

INSTRUCTIONS: This record shall show the location of the corner and shall include all of the following 8 elements:

U.S. PUBLIC LAND SURVEY MONUMENT RECORD

1. Description of original government survey information:

November/December, 1844 - Township lines of T13N, R4 and 5W, surveyed by J. E. Whiteher, Deputy Surveyor. North one east side Section 35 Var. 8°26', 37.00 stream 10NW, 40.00 set ¼ section post in mound pit 7 East.

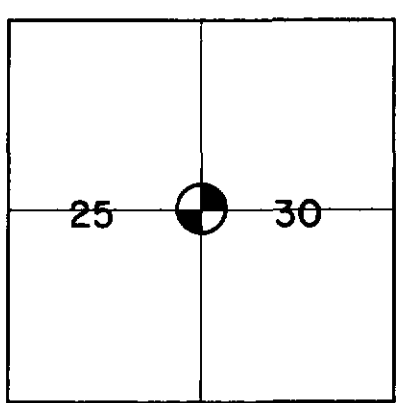
2. List from research any record evidence, monument evidence, occupational evidence and any other material evidence related to subsequent restoration:

No subsequent surveys are recorded in Vernon County Register of Deeds.

3. Describe any material evidence found and/or considered by the surveyor and justification for positioning corner, giving the direction and distance to survey corners which were used as evidence or used for proportioning:

A 1¼" iron shaft of unknown origin was found to the NW near a fence corner. This monument appears to have been recently set. Field measurements from this corner to adjacent corners reveals a shortage of 40' to the west and an excess of 60' over Gov. dist. to the east. A measurement to the north of 2605' and to the south of 2660' plainly shows the existing monument is in question. Hand digging and a thorough search reveals no additional evidence of corner. A new E-W position was established by a straight line from the existing SW corner of Section 30 to the West Quarter corner of Section 19. That line intersected with occupational lines projected from west and from east produced a position with a much more reasonable relationship to adjacent corners. This new position was accepted and a 2" x 30" iron pipe was set in place and witnessed as shown in Paragraph 5.

4. I, Duane A. Holman, certify that the corner location shown on this record was determined by me or under my direction and control and that this U.S. Public Land Monument record is correct and complete to the best of my knowledge and belief.

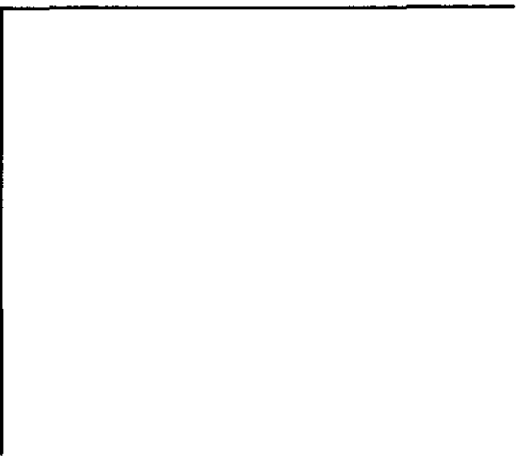
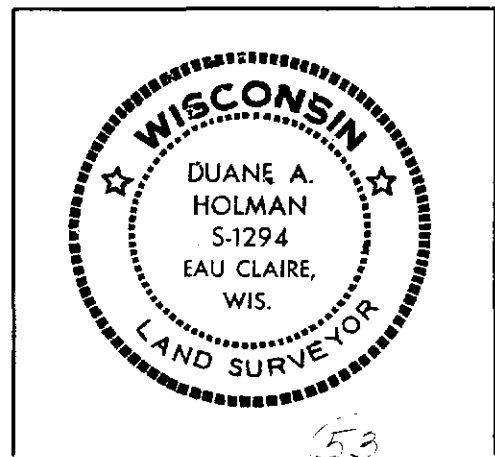


IDENTIFY CORNER

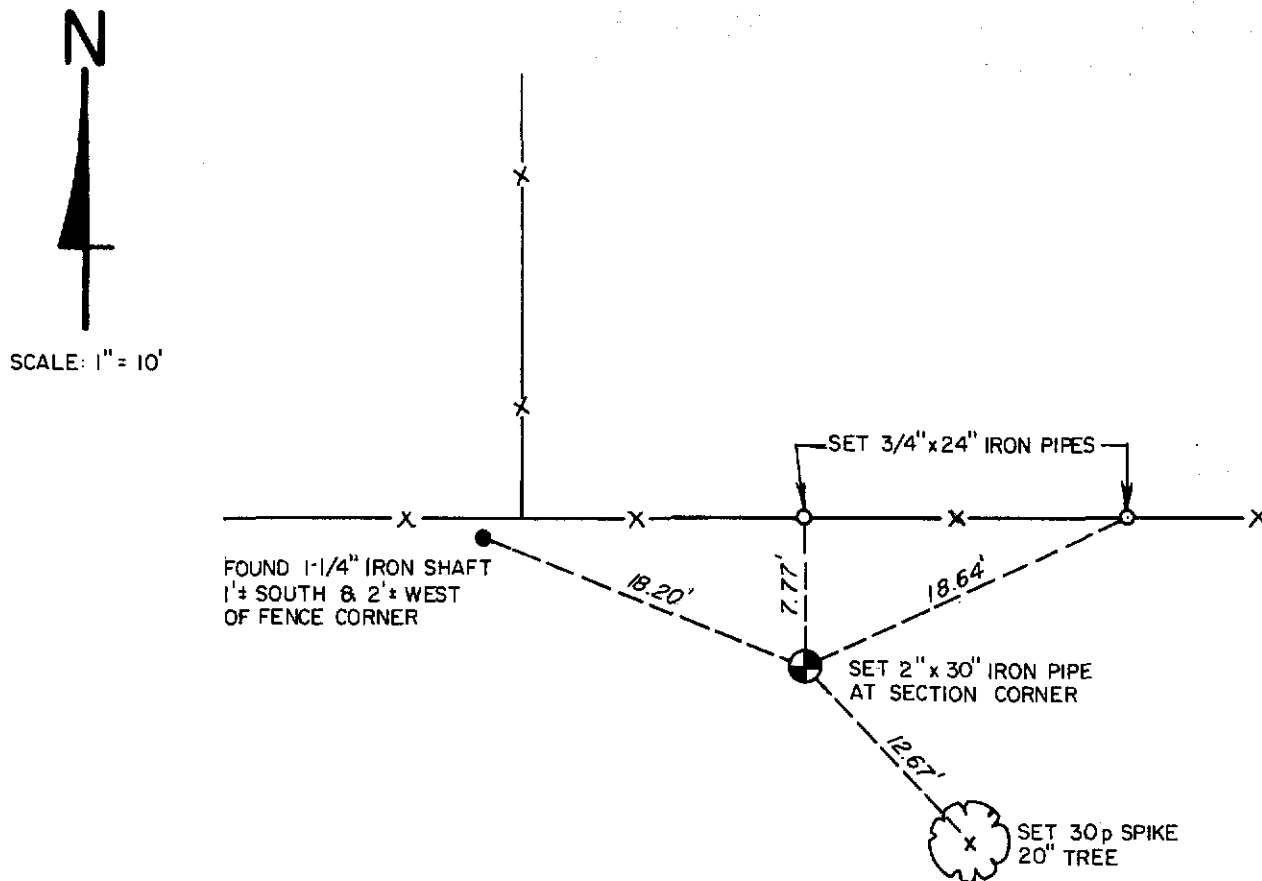
WEST 1/4

SECTION 30
T. 13 N., R. 4 W.
TOWN OF VIROQUA

Duane A. Holman Signature 4/27/87 Date
SHORT ELLIOTT HENDRICKSON, INC.
421 Franette Drive
Chippewa Falls, WI 54728
SURVEYOR'S STAMP REGISTER OF DEEDS STAMP



5. Plan view drawing showing a minimum of four reference ties with bearings (indicate bearing reference) and distances to the monument. Identify the reference ties in detail (ex. 7/8" re-bar 2.0' SW of 20" white oak), show improvements and natural features in the immediate vicinity such as roads, fences, buildings, lakes, streams, rock outcrops, etc. and their relation to the corner:



6. Describe any material discrepancy between the location of the corner as restored or re-established and location of that corner as previously restored or re-established:

7. Parol evidence concerning corner location. Give name and address.

8. If excavated, give excavation dimensions and location.