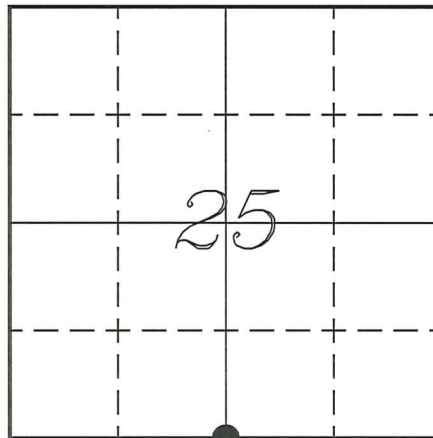


**VERNON COUNTY COORDINATE SUBMISSION FORM**  
 "As An Addendum To"  
**VERNON COUNTY**  
**CERTIFIED U.S. PUBLIC LAND SURVEY MONUMENT RECORD**

INSTRUCTIONS: THIS RECORD FORM SHOULD BE USED WHEN COORDINATES ARE PROVIDED FOR A PUBLIC LAND SURVEY CORNER AND SHALL INCLUDE ALL OF THE FOLLOWING ELEMENTS (A-D)

(A) IDENTIFY THE CORNER BY REFERENCE TO THE U.S. PUBLIC LAND SURVEY SYSTEM IN DIAGRAM AT RIGHT

● = CORNER MONUMENT



(B) COORDINATES:

GEOGRAPHIC (Degrees Minutes Seconds)

LATITUDE: 43° 34' 02.2339" N

LONGITUDE: 90° 55' 10.0016" W

ELLIPSOID HT (m): \_\_\_\_\_

DATUM: NAD 1983 (2011)

GEOID12A ADJ: \_\_\_\_\_

ORTHOMETRIC HT: \_\_\_\_\_

VERNON COUNTY (U.S. FEET)

Coord Quality (+/-)

NORTHING (Y): 153150.767 \_\_\_\_\_

EASTING (X): 693922.440 \_\_\_\_\_

GPS METHOD USED TO COMPUTE COORDINATES (check as applicable)

- RTK Observations     Static Baselines     OPUS-RS Solution     OPUS-S Solution  
 Combination of GPS Observations & Conventional Procedures     WISCORS Measurements  
 Single Angle Measurement     Closed Traverse Loop

Was a Least Squares Adjustment Used to Compute Coordinates? Yes /  No

BASE CONTROL USED FOR COORDINATE COMPUTATION

Station Name	Station Coordinates	Date/Time
_____	_____	_____
_____	_____	_____
_____	_____	_____

(C) REASON FOR COORDINATES SUBMITTAL (check one)

- Being Filed With a New U.S. PLS Monument Record  
 To Correct the Coordinates Listed on a Previously Filed PLS Monument Record  
 To Provide Coordinates for Previously Filed PLS Monument Record without Coordinates  
 To Provide Supplemental Coordinates for a Previously Filed PLS Monument Record  
 To Provide Coordinates for a Internal PLS Corner

MOST RECENT PLS MONUMENT RECORD DATE:

R.L.S. WHO CREATED MOST RECENT PLS MONUMENT RECORD:

(D) AGENT(S) PERFORMING GPS OBSERVATIONS & COORDINATE COMPUTATION

- 1) LAURENCE E JOHNS III  
 2) \_\_\_\_\_

I, LAURENCE E JOHNS III PLS 2804, PROFESSIONAL LAND SURVEYOR, HEREBY CERTIFY THAT THE COORDINATES PROVIDED ON THIS RECORD MEET THE DEFINITION OF SURVEY GRADE COORDINATES AS DEFINED BY THE WISCONSIN COUNTY SURVEYORS ASSOCIATION AND WERE DETERMINED BY ME OR UNDER MY DIRECTION AND CONTROL AND THAT THIS COORDINATE SUBMISSION FORM IS CORRECT AND COMPLETE TO THE BEST OF MY KNOWLEDGE AND BELIEF.



# Vernon County Certified U.S. Public Land Survey Monument Record

INSTRUCTIONS: THIS RECORD SHALL SHOW THE LOCATION OF THE CORNER AND SHALL INCLUDE ALL OF THE FOLLOWING ELEMENTS (A-I)

(A) IDENTIFY THE CORNER BY REFERENCE TO THE U.S. PUBLIC LAND SURVEY SYSTEM

■ = CORNER MONUMENT RESTORED

WITNESSES TO CORNER LOCATION:

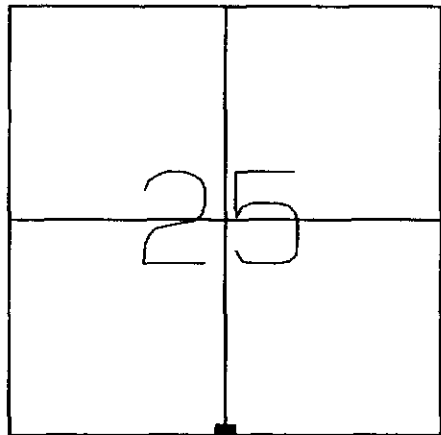
- 1) Chad L. Crook
- 2) Brenda A. Crook
- 3)

STATE PLANE COORDINATES (WISCONSIN SOUTH ZONE)

NORTHING:  
EASTING:

VERNON COUNTY COORDINATES

NORTHING: 153,150.59  
EASTING: 693,922.26



SECTION 25, TOWN 13 NORTH, RANGE 5 WEST  
Jefferson Township

(B) DESCRIBE ANY RECORD EVIDENCE, MONUMENT EVIDENCE, OCCUPATIONAL EVIDENCE, TESTIMONIAL EVIDENCE OR ANY OTHER MATERIAL EVIDENCE YOU CONSIDERED, AND WHETHER THE MONUMENT WAS FOUND OR PLACED.

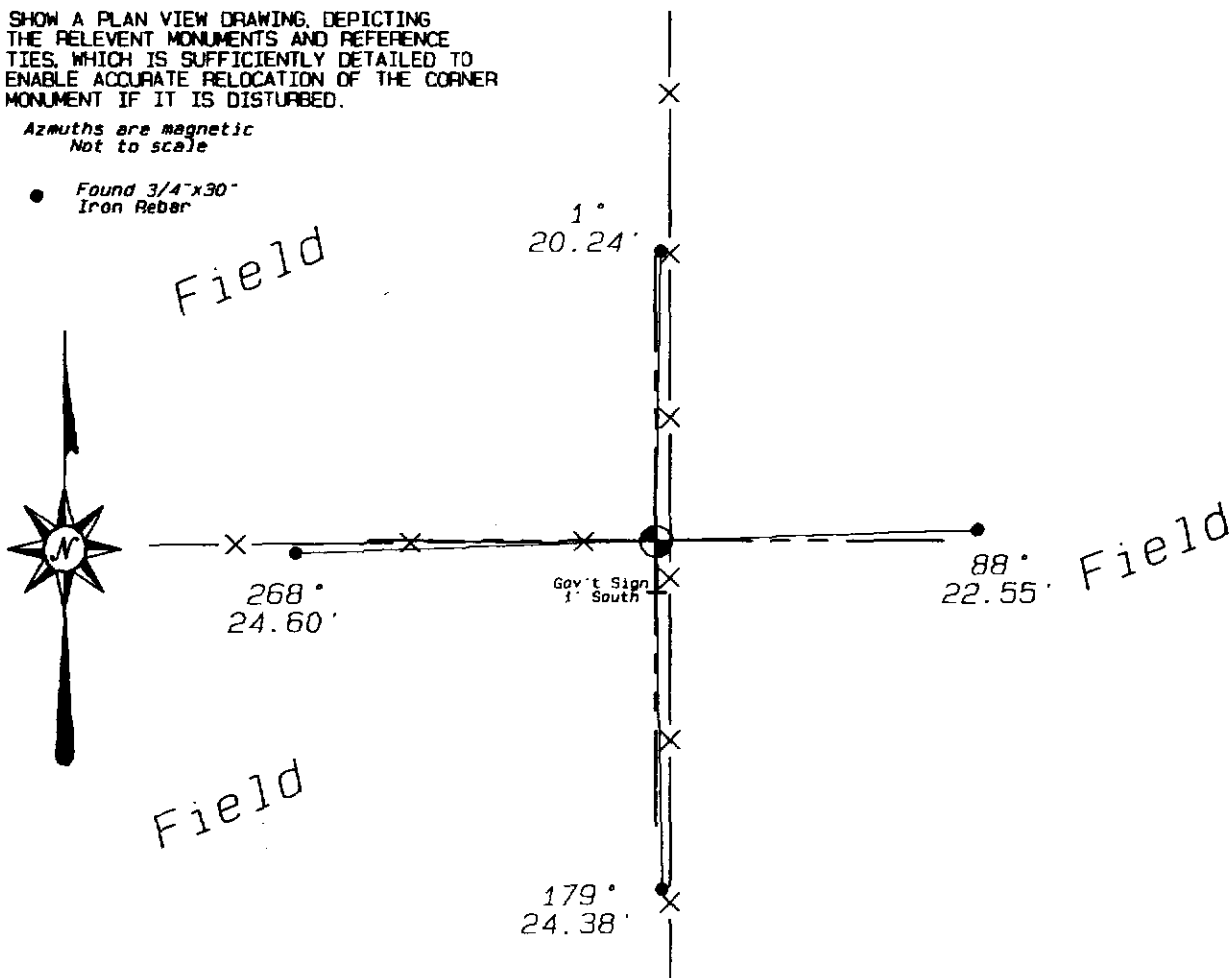
F. Curtis Crook was here and found a "cross" chisled in cement base of angle iron corner post as called out in a previous survey.  
Matthew Filus was here in 1999 as called out in Tie Sheet. Accepted chisled cross as corner location.

(C) IN THE PLAN VIEW DRAWING BELOW, PROVIDE REFERENCE TIES TO AT LEAST 4 WITNESS MONUMENTS OR, IF THE LOCATION IS WITHIN A MUNICIPALITY, TO AT LEAST 2 WITNESS MONUMENTS. (WITNESS MONUMENTS SHALL BE MADE OF CONCRETE, NATURAL STONE, IRON, OR OTHER EQUALLY DURABLE MATERIAL.) DESCRIBE WITNESS MONUMENTS.

(D) SHOW A PLAN VIEW DRAWING, DEPICTING THE RELEVANT MONUMENTS AND REFERENCE TIES, WHICH IS SUFFICIENTLY DETAILED TO ENABLE ACCURATE RELOCATION OF THE CORNER MONUMENT IF IT IS DISTURBED.

*Azimuths are magnetic  
Not to scale*

- Found 3/4"x30" Iron Rebar



(41A)

(E) DESCRIBE ANY MATERIAL DISCREPANCY BETWEEN THE LOCATION OF THE CORNER AS RESTORED OR REESTABLISHED AND THE LOCATION OF THAT CORNER AS PREVIOUSLY RESTORED OR REESTABLISHED BY DISTANCE AND DIRECTION. SHOW THE DISCREPANCY ON THE PLAN VIEW DRAWING UNDER (D), ABOVE. SHOW THE DISTANCES BETWEEN THE CORNER AS PREVIOUSLY RESTORED OR REESTABLISHED AND (1) THE CORNER AS RESTORED OR REESTABLISHED, AND (2) TO AT LEAST 2 OF THE WITNESS MONUMENTS AS SHOWN ON THE DRAWING IN (D), ABOVE.

(NA)

(F) WAS THE CORNER RESTORED THROUGH ACCEPTANCE OF (1) AN OBLITERATED EVIDENCE LOCATION, OR (2) A FOUND PERPETUATED LOCATION?

(2)

(G & H) WAS THE CORNER REESTABLISHED THROUGH LOST CORNER PROPORTIONATE METHODS? IF SO SHOW THE METHOD, INCLUDING THE DIRECTION AND DISTANCES TO THE OTHER PUBLIC LAND SURVEY CORNERS USED AS EVIDENCE OR USED FOR PROPORTIONING IN DETERMINING THE CORNER LOCATION.

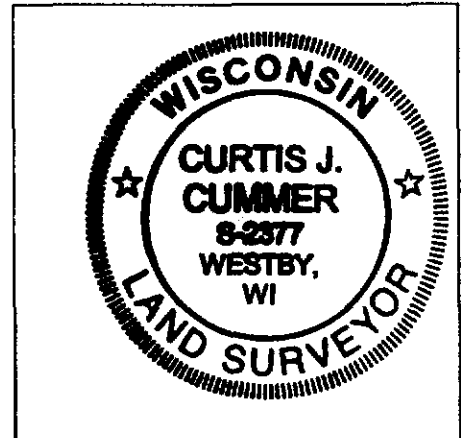
(NA)

(I) I, Curtis J. Cummer, CERTIFY THAT THE LOCATION SHOWN ON THIS RECORD WAS DETERMINED BY ME OR UNDER MY DIRECTION AND CONTROL AND THAT THIS U.S. PUBLIC LAND SURVEY MONUMENT RECORD IS CORRECT AND COMPLETE TO THE BEST OF MY KNOWLEDGE AND BELIEF.

  
SIGNATURE

6/8/05  
DATE

LAND SURVEYOR SEAL



JAN 7 1999

# VERNON COUNTY U.S. PUBLIC LAND SURVEY MONUMENT RECORD

FOR COUNTY  
SURVEYOR  
FILING USE

# CORNER NO. \_\_\_\_\_

TYPE OF MONUMENT: EXISTING ANGLE-IRON CORNER

ELEVATION M.S.L. DATUM: \_\_\_\_\_

COUNTY COORDINATES: N \_\_\_\_\_

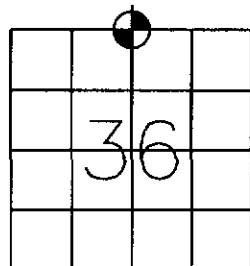
THETA ANGLE: \_\_\_\_\_

E \_\_\_\_\_

FIELD BOOK: S-33 PAGE: 23

## Basis for Monument Location

(Use reverse side if necessary  
Show info such as: History of corner, with reference to Vol. and page, dates, surveyor; exact description of monument found; if location computed, by taped or EDM traverse; landowner remarks, witnesses, etc.)



LOCATION  
(Indicated by 'X')

NO ORIGINAL BLM EVIDENCE REMAINS.

OCTOBER 28, 1882 SURVEY BY WM H KNOWER, COUNTY SURVEYOR, CALLS FOR "CORNER BY AGREEMENT.

CITY, VILLAGE OR TOWN JEFFERSON

RETRACED THE NORTH LINE OF SECTION 36 TO FIND THAT THE EXISTENT FENCE CORNER SHOWN FITS BOTH LINE AND PROPORTIONATE DISTANCE AGAINST THE 1882 SURVEY EXTREMELY WELL.

SECTION 36

TOWN 13 NORTH

ACCEPTED THE FENCE CORNER AS THE NORTH 1/4 CORNER OF SECTION 36 AND WITNESSED IT AS SHOWN BELOW.

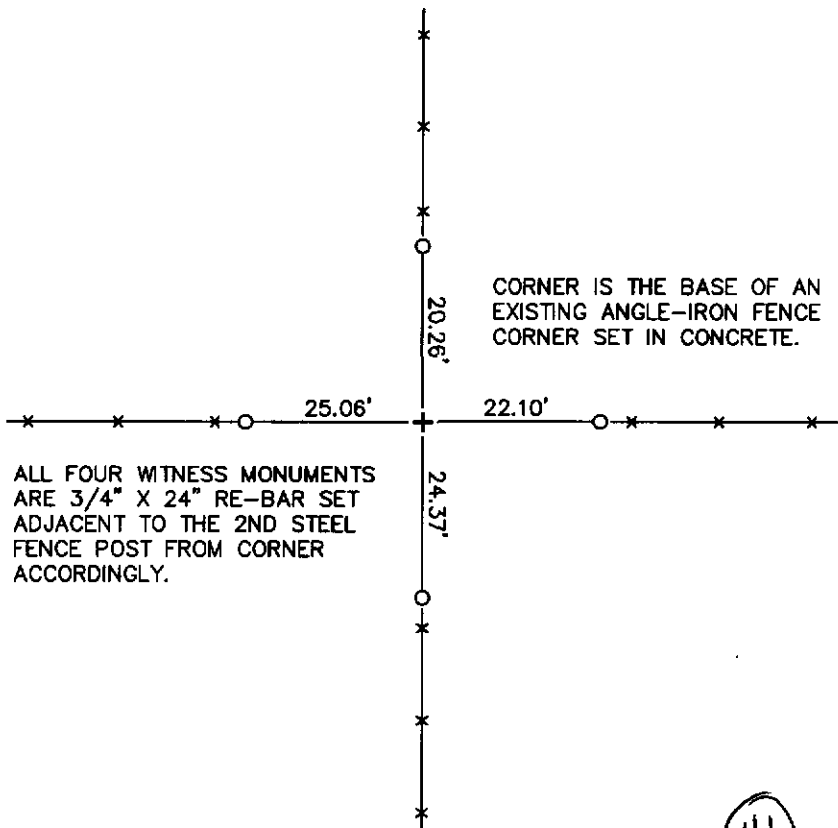
RANGE 5 WEST

DRAFTED BY MM FILUS

FIELD CREW MM FILUS RH KURZ

## TIE SKETCH

(Show at least four ties. Also, fence lines, center line of roads and any other helpful features.)



### CORNER MAINTENANCE INFO




SURVEYORS' CERTIFICATE:  
I, MATTHEW M FILUS, WISCONSIN REGISTERED LAND SURVEYOR #2185, HEREBY CERTIFY THAT THIS U.S. PUBLIC LAND SURVEY MONUMENT RECORD IS TRUE AND CORRECT TO THE BEST OF MY KNOWLEDGE AND BELIEF.

*Matthew M Filus* January 6, 1999

VERBICHER ASSOCIATES, INC. DATE  
MATTHEW M. FILUS, RLS #2185

41