

Vernon County Certified U.S. Public Land Survey Monument Record

INSTRUCTIONS: THIS RECORD SHALL SHOW THE LOCATION OF THE CORNER AND SHALL INCLUDE ALL OF THE FOLLOWING ELEMENTS (A-I)

(A) IDENTIFY THE CORNER BY REFERENCE TO THE U.S. PUBLIC LAND SURVEY SYSTEM

■ - CORNER MONUMENT RESTORED

WITNESSES TO CORNER LOCATION:

- 1) Kenny Reinhart
- 2) Neil Baldwin
- 3) Chad Crook

STATE PLANE COORDINATES (WISCONSIN SOUTH ZONE)

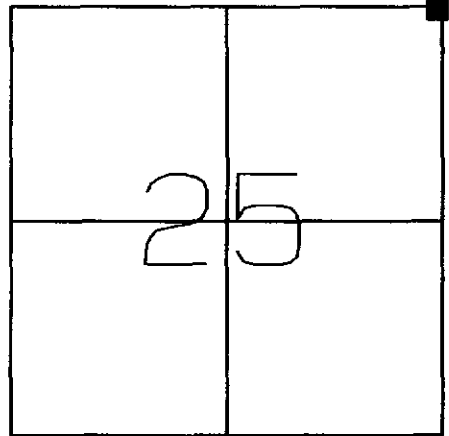
NORTHING:

EASTING:

VERNON COUNTY COORDINATES

NORTHING: 158,428.59

EASTING: 696,510.64



SECTION 25, TOWN 13 NORTH, RANGE 5 WEST
Jefferson Township

(B) DESCRIBE ANY RECORD EVIDENCE, MONUMENT EVIDENCE, OCCUPATIONAL EVIDENCE, TESTIMONIAL EVIDENCE OR ANY OTHER MATERIAL EVIDENCE YOU CONSIDERED, AND WHETHER THE MONUMENT WAS FOUND OR PLACED.

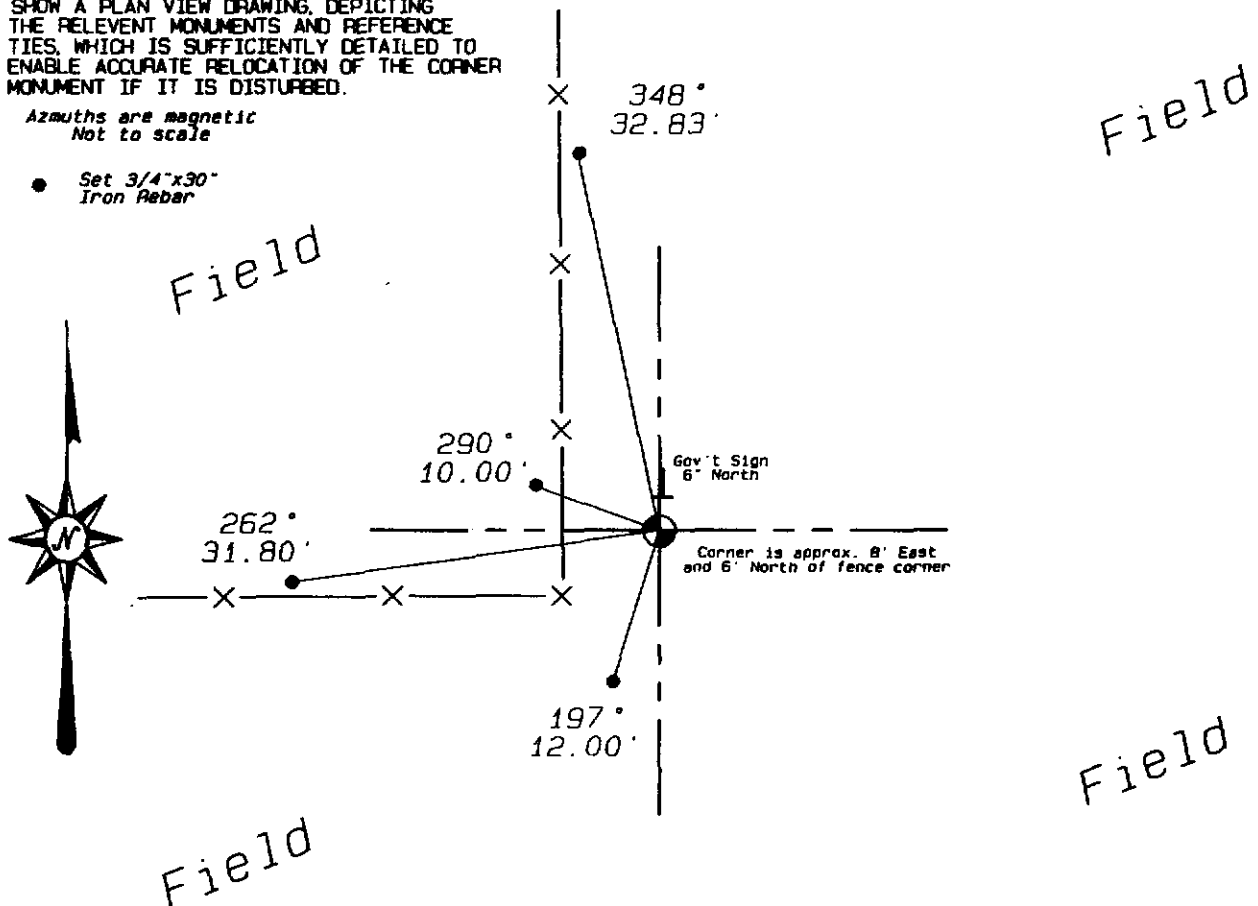
Replaced found 2" Iron Pipe with a Vernon County Monument. F. Curtis Crook calls out said pipe in a previous survey.

(C) IN THE PLAN VIEW DRAWING BELOW, PROVIDE REFERENCE TIES TO AT LEAST 4 WITNESS MONUMENTS OR, IF THE LOCATION IS WITHIN A MUNICIPALITY, TO AT LEAST 2 WITNESS MONUMENTS. (WITNESS MONUMENTS SHALL BE MADE OF CONCRETE, NATURAL STONE, IRON, OR OTHER EQUALLY DURABLE MATERIAL.) DESCRIBE WITNESS MONUMENTS.

(D) SHOW A PLAN VIEW DRAWING, DEPICTING THE RELEVANT MONUMENTS AND REFERENCE TIES, WHICH IS SUFFICIENTLY DETAILED TO ENABLE ACCURATE RELOCATION OF THE CORNER MONUMENT IF IT IS DISTURBED.

*Azimuths are magnetic
Not to scale*

- Set 3/4"x30" Iron Rebar



(E) DESCRIBE ANY MATERIAL DISCREPANCY BETWEEN THE LOCATION OF THE CORNER AS RESTORED OR REESTABLISHED AND THE LOCATION OF THAT CORNER AS PREVIOUSLY RESTORED OR REESTABLISHED BY DISTANCE AND DIRECTION. SHOW THE DISCREPANCY ON THE PLAN VIEW DRAWING UNDER (D), ABOVE. SHOW THE DISTANCES BETWEEN THE CORNER AS PREVIOUSLY RESTORED OR REESTABLISHED AND (1) THE CORNER AS RESTORED OR REESTABLISHED, AND (2) TO AT LEAST 2 OF THE WITNESS MONUMENTS AS SHOWN ON THE DRAWING IN (D), ABOVE.

(NA)

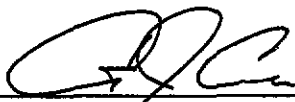
(F) WAS THE CORNER RESTORED THROUGH ACCEPTANCE OF (1) AN OBLITERATED EVIDENCE LOCATION, OR (2) A FOUND PERPETUATED LOCATION?

(2)

(G & H) WAS THE CORNER REESTABLISHED THROUGH LOST CORNER PROPORTIONATE METHODS? IF SO SHOW THE METHOD, INCLUDING THE DIRECTION AND DISTANCES TO THE OTHER PUBLIC LAND SURVEY CORNERS USED AS EVIDENCE OR USED FOR PROPORTIONING IN DETERMINING THE CORNER LOCATION.

(NA)

(I) I, Curtis J. Cummer, CERTIFY THAT THE LOCATION SHOWN ON THIS RECORD WAS DETERMINED BY ME OR UNDER MY DIRECTION AND CONTROL AND THAT THIS U.S. PUBLIC LAND SURVEY MONUMENT RECORD IS CORRECT AND COMPLETE TO THE BEST OF MY KNOWLEDGE AND BELIEF.

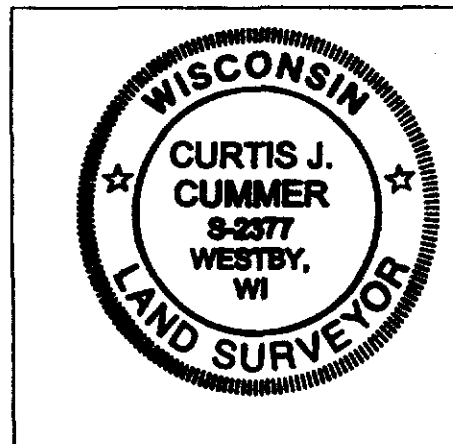


SIGNATURE

6/8/05

DATE

LAND SURVEYOR SEAL



INSTRUCTIONS: This record shall show the location of the corner and shall include all of the following 8 elements:

Stock No. 26273

U.S. PUBLIC LAND SURVEY MONUMENT RECORD

1. Description of original government survey information:

November/December, 1844 - Township lines of T13N, R1 SW surveyed by J. E. Whiteher, Deputy Surveyor. North on east side Section 25, 80.00 set post corner to Sections 24 and 25 in a mount pit 7 East.

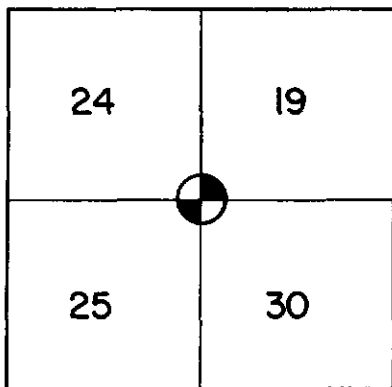
2. List from research any record evidence, monument evidence, occupational evidence and any other material evidence related to subsequent restoration:

No subsequent surveys are recorded in Vernon County Register of Deeds.

3. Describe any material evidence found and/or considered by the surveyor and justification for positioning corner, giving the direction and distance to survey corners which were used as evidence or used for proportioning:

No evidence except land use was found for this corner. Land owner indicates area was excavated by bulldozer and fence was probably replaced. Measurements show fence is south and projections of land use from west confirms this. An excess exists to the east over the recorded Gov. excess and a shortage to the west exists. It is found that the best N-S position is the projection of land use 1/2 mile from the west. The best E-W position is a straight line from the SW corner of Section 30 to the west Quarter corner of Section 19. A slight raise in the ground to the south of this new position indicates a possible old N-S fence line. This position was monumented and witnessed as shown in Paragraph 5.

4. I, Duane A. Holman, certify that the corner location shown on this record was determined by me or under my direction and control and that this U.S. Public Land Monument record is correct and complete to the best of my knowledge and belief.



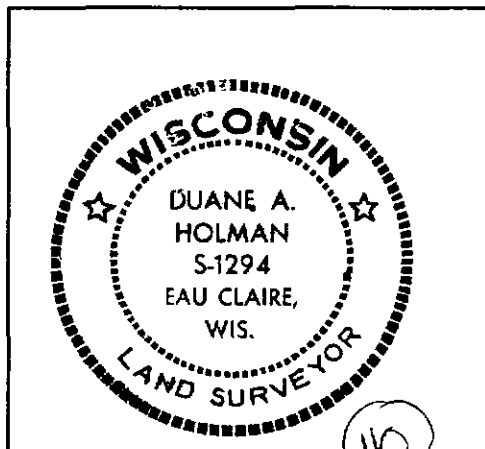
IDENTIFY CORNER
NORTHWEST

SECTION 30
T. 13 N., R. 4 W.
TOWN OF VIROQUA

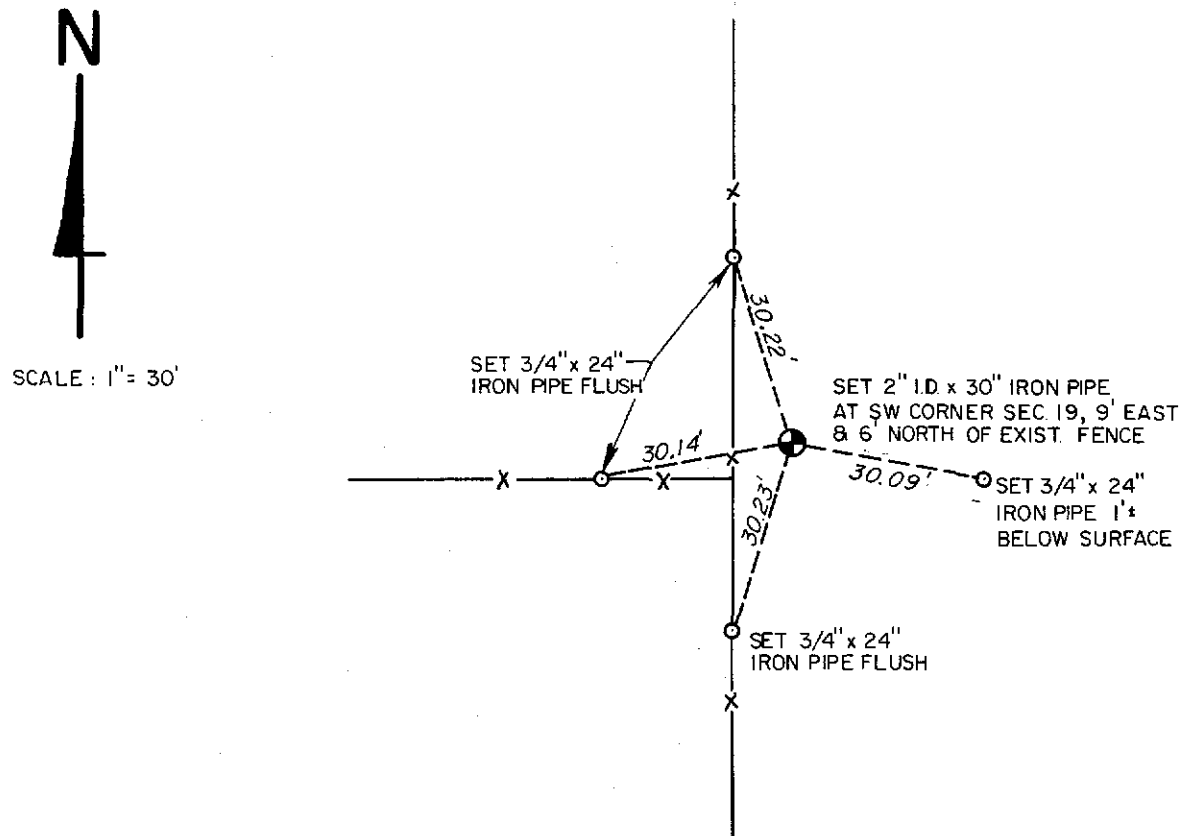
Duane A. Holman Signature 2/27/87 Date

SHORT ELLIOTT HENDRICKSON, INC.
421 Frenette Drive
Chippewa Falls, WI 54729
SURVEYOR'S STAMP

REGISTER OF DEEDS STAMP



5. Plan view drawing showing a minimum of four reference ties with bearings (indicate bearing reference) and distances to the monument. Identify the reference ties in detail (ex. 7/8" re-bar 2.0' SW of 20" white oak), show improvements and natural features in the immediate vicinity such as roads, fences, buildings, lakes, streams, rock outcrops, etc. and their relation to the corner:



6. Describe any material discrepancy between the location of the corner as restored or re-established and location of that corner as previously restored or re-established:

7. Parol evidence concerning corner location. Give name and address.

8. If excavated, give excavation dimensions and location.