

CERTIFIED LAND CORNER

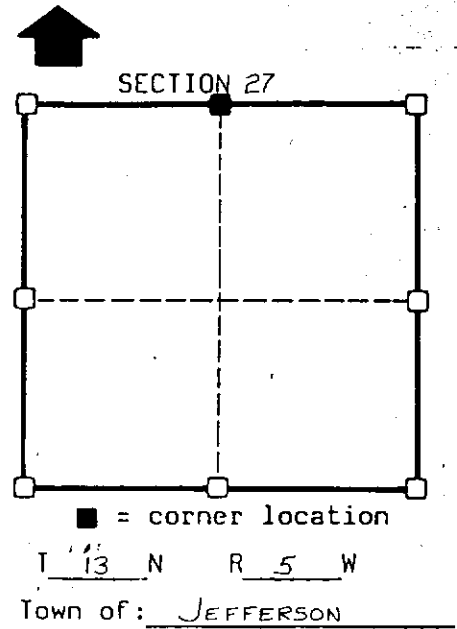
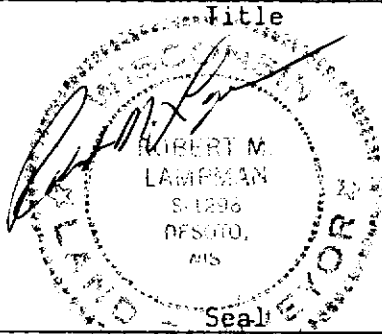
STATE OF WISCONSIN)  
COUNTY OF VERNON.) S.S.

CERTIFICATE

I, ROBERT M. LAMPMAN, do hereby certify that on the 25<sup>th</sup> day of MARCH 1992, I found (~~evidence~~) (no evidence) of the N 1/4 corner of SECTION 27, T 13 N, R 5 W, Fourth Principal Meridian, and I re-established said corner according to the Wisconsin Statutes as shown and described hereon.

Dated this 26<sup>th</sup> day of MARCH 19 92

ROBERT M. LAMPMAN R.L.S. S-1296



History of original corner establishment:

ORIGINAL SURVEY BY S.D. DIXON in July, 1845.

Description of corner evidence found:

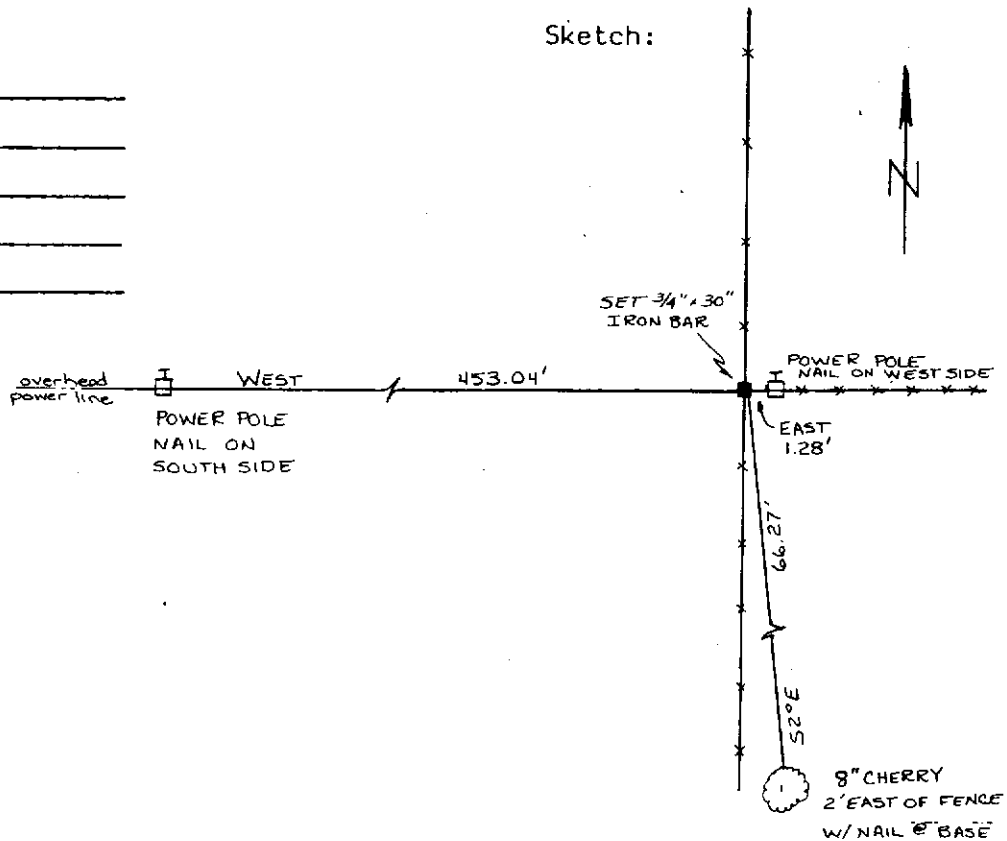
CORNER LOCATION RE-ESTABLISHED USING INFORMATION FROM A SURVEY BY W.H. KNOWER IN 1882 TOGETHER WITH OCCUPATIONAL EVIDENCE.

Description of corner and witness monuments, references and accessories used to perpetuate the original or re-established location of this corner:

Witnesses to corner location:

ROBERT M. LAMPMAN  
JESSICA A. ZAMOR

Sketch:



SURVEY CONTROL ORDER

Horizontal  
Vertical

WISCONSIN COORDINATE SYSTEM

Corner	East (X)	North (Y)	Elevation (Z)	Zone
Control Sta. Name				