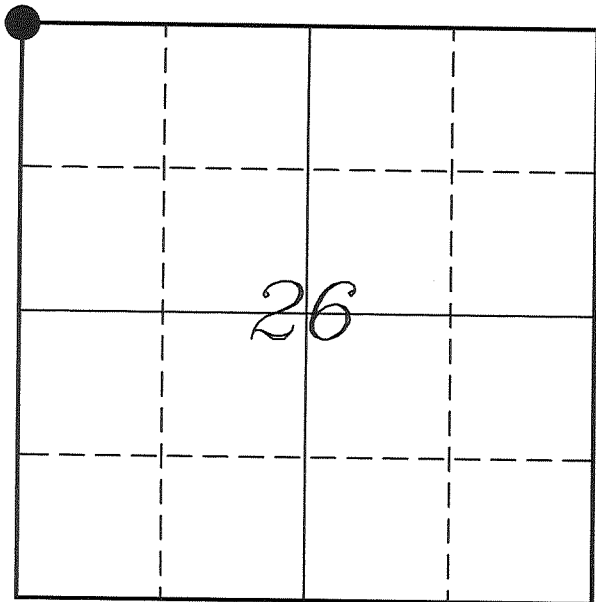

U. S. PUBLIC LAND SURVEY MONUMENT RECORD

SECTION 26, T13N, R5W, TOWN OF JEFFERSON VERNON COUNTY, WISCONSIN



LOCATION OF LANDMARK

Crew: Laurence E Johns III

Date: 8 October 2011

VERNON COUNTY COORDINATE SYSTEM	
Northing	158405.565
Easting	686028.744
Datum	NAD 1983 (2007)
Elevation	
Datum	
TYPE OF LANDMARK:	
Set Lunde Monument	
BEARINGS ARE REFERENCED TO:	
Vernon County Coordinates	

Describe any record evidence, monument evidence, testimonial evidence or any other material evidence you considered and whether the monument was found or restored through acceptance of an obliterated evidence location.

There are no bearing trees of record in the area.

There is a well maintained 3-way fence corner at this location. The owner of the property to the Southeast of this corner stated that this fence corner was in the same location when his father owned the farm.

The distances to adjoining corners match well with previous surveys by Knower and Sterling.

Accepted the fence corner as the best available evidence of the original government corner and placed a Lunde Monument at the corner.

Describe or show any material discrepancy between the location of the restored corner and that of the corner previously restored or re-established.

Samuel D Dixon established this corner in July 1845.

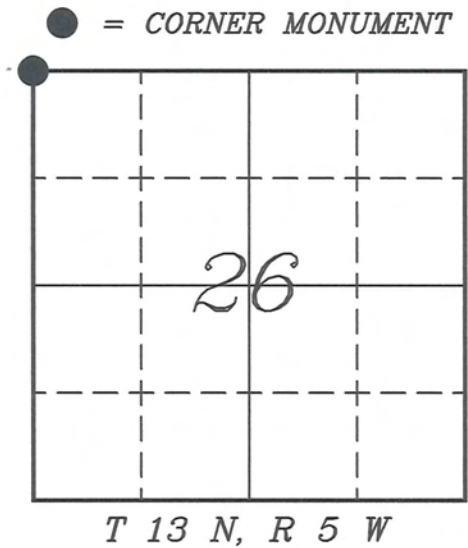
Wm Knower was at this corner, in June 1882, during a survey in Section 27. He shows that he found the government corner and marked a new tie.

C M Sterling was at this corner, in September 1894, during a survey in Sections 22 & 23. He does not show what he found at this corner.

VERNON COUNTY COORDINATE SUBMISSION FORM
"As An Addendum To"
VERNON COUNTY
CERTIFIED U.S. PUBLIC LAND SURVEY MONUMENT RECORD

INSTRUCTIONS: THIS RECORD FORM SHOULD BE USED WHEN COORDINATES ARE PROVIDED FOR A PUBLIC LAND SURVEY CORNER AND SHALL INCLUDE ALL OF THE FOLLOWING ELEMENTS (A-D)

(A) IDENTIFY THE CORNER BY REFERENCE TO THE U.S. PUBLIC LAND SURVEY SYSTEM IN DIAGRAM AT RIGHT



(B) COORDINATES:

GEOGRAPHIC (Degrees Minutes Seconds)
 LATITUDE: 43° 34' 53.9874" N
 LONGITUDE: 90° 56' 57.3552" W
 ELLIPSOID HT (m): _____
 DATUM: NAD 1983 (2007)
 GEOID03 ADJ: -32.483
 OTHROMETRIC HT: _____

VERNON COUNTY (U.S. FEET) Coord Quality (+/-)
 NORTHING (Y): 158405.565 _____
 EASTING (X): 686028.744 _____

GPS METHOD USED TO COMPUTE COORDINATES (check as applicable)

- RTK Observations Static Baselines OPUS-RS Solution OPUS-S Solution
 Combination of GPS Observations & Conventional Procedures
 Single Angle Measurement Closed Traverse Loop

Was a Least Squares Adjustment Used to Compute Coordinates? Yes / No

BASE CONTROL USED FOR COORDINATE COMPUTATION

Station Name	Station Coordinates	Date/Time
<u>OPUS Station - TS 01</u>	<u>43° 34' 00.5128" N 90° 56' 12.6619" W</u>	<u>09/21/2011 - 17:05</u>
	<u>N - 152984.526 E - 689308.606</u>	
<u>Same</u>		<u>10/06/2011 - 12:25</u>

(C) REASON FOR COORDINATES SUBMITTAL (check one)

- Being Filed With a New U.S. PLS Monument Record
 To Correct the Coordinates Listed on a Previously Filed PLS Monument Record
 To Provide Coordinates for Previously Filed PLS Monument Record without Coordinates
 To Provide Supplemental Coordinates for a Previously Filed PLS Monument Record

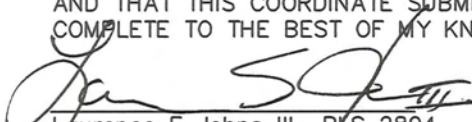
MOST RECENT PLS MONUMENT RECORD DATE:

R.L.S. WHO CREATED MOST RECENT PLS MONUMENT RECORD:

(D) AGENT(S) PERFORMING GPS OBSERVATIONS & COORDINATE COMPUTATION

- 1) LAURENCE E JOHNS III
 2) _____

I, LAURENCE E JOHNS III RLS 2804, REGISTERED LAND SURVEYOR, HEREBY CERTIFY THAT THE COORDINATES PROVIDED ON THIS RECORD WERE DETERMINED BY ME OR UNDER MY DIRECTION AND CONTROL AND THAT THIS COORDINATE SUBMISSION FORM IS CORRECT AND COMPLETE TO THE BEST OF MY KNOWLEDGE AND BELIEF.


 Laurence E Johns III RLS 2804
 Eagle Ridge Surveying, LLC
 PO Box 213
 Wilton, Wisconsin
 22 December 2011

