

RECEIVED
 MAR 20 2002
 B.C. 62

VERNON COUNTY CERTIFIED U.S. PUBLIC LAND SURVEY MONUMENT RECORD

INSTRUCTIONS: THIS RECORD SHALL SHOW THE LOCATION OF THE CORNER AND SHALL INCLUDE ALL OF THE FOLLOWING ELEMENTS (A-I)

(A) IDENTIFY THE CORNER BY REFERENCE TO THE U.S. PUBLIC LAND SURVEY SYSTEM

= CORNER MONUMENT RESTORED

W1/4 Section 22, T13N, R5W

WITNESSES TO CORNER LOCATION:

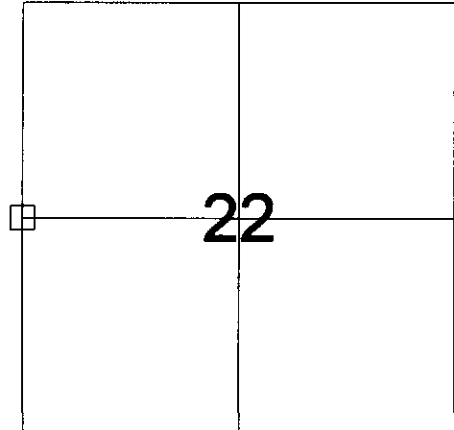
- 1) Curtis Crook
- 2) Chad Crook
- 3)

STATE PLANE COORDINATES (WISCONSIN SOUTH ZONE)

NORTHING:
 EASTING:

VERNON COUNTY COORDINATES

NORTHING: 160951.982
 EASTING: 680791.037



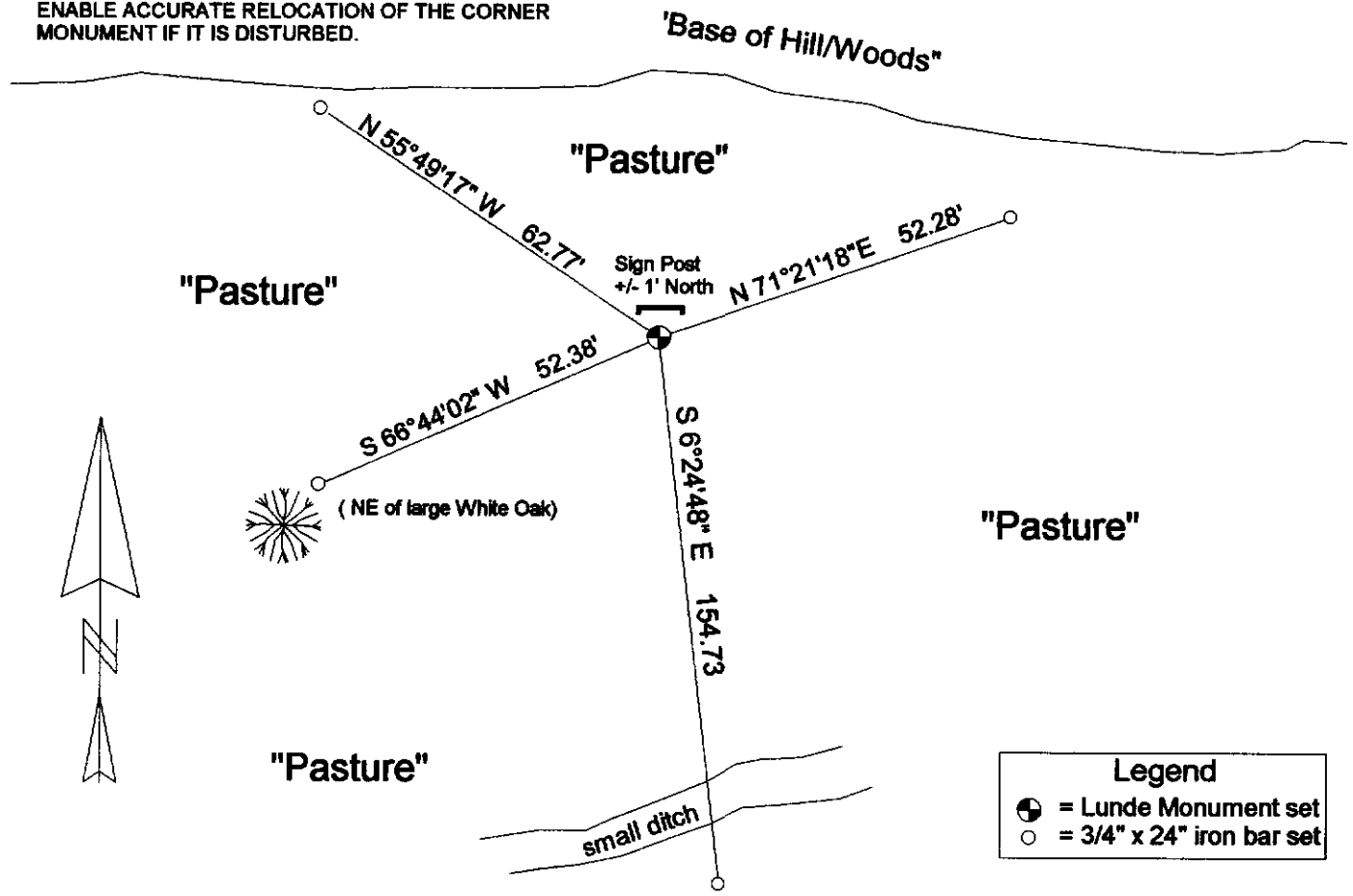
SECTION 22 , TOWN 13 NORTH, RANGE 5 WEST

(B) DESCRIBE ANY RECORD EVIDENCE, MONUMENT EVIDENCE, OCCUPATIONAL EVIDENCE, TESTIMONIAL EVIDENCE OR ANY OTHER MATERIAL EVIDENCE YOU CONSIDERED, AND WHETHER THE MONUMENT WAS FOUND OR PLACED.

This location was reestablished using occupation evidence (old fence, stream ties etc.)

(C) IN THE PLAN VIEW DRAWING BELOW, PROVIDE REFERENCE TIES TO AT LEAST 4 WITNESS MONUMENTS OR, IF THE LOCATION IS WITHIN A MUNICIPALITY, TO AT LEAST 2 WITNESS MONUMENTS. (WITNESS MONUMENTS SHALL BE MADE OF CONCRETE, NATURAL STONE, IRON, OR OTHER EQUALLY DURABLE MATERIAL.) DESCRIBE WITNESS MONUMENTS.

(D) SHOW A PLAN VIEW DRAWING, DEPICTING THE RELEVANT MONUMENTS AND REFERENCE TIES, WHICH IS SUFFICIENTLY DETAILED TO ENABLE ACCURATE RELOCATION OF THE CORNER MONUMENT IF IT IS DISTURBED.



(E) DESCRIBE ANY MATERIAL DISCREPENCY BETWEEN THE LOCATION OF THE CORNER AS RESTORED OR REESTABLISHED AND THE LOCATION OF THAT CORNER AS PREVIOUSLY RESTORED OR REESTABLISHED BY DISTANCE AND DIRECTION. SHOW THE DISCREPENCY ON THE PLAN VIEW DRAWING UNDER (D), ABOVE. SHOW THE DISTANCES BETWEEN THE CORNER AS PREVIOUSLY RESTORED OR REESTABLISHED AND (1) THE CORNER AS RESTORED OR REESTABLISHED, AND (2) TO AT LEAST 2 OF THE WITNESS MONUMENTS AS SHOWN ON THE DRAWING IN (D), ABOVE.

None Found

(F) WAS THE CORNER RESTORED THROUGH ACCEPTANCE OF (1) AN OBLITERATED EVIDENCE LOCATION, OR (2) A FOUND PERPETUATED LOCATION?

An Obliterated Evidence Location.

(G & H) WAS THE CORNER REESTABLISHED THROUGH LOST CORNER PROPORTIONED METHODS? IF SO SHOW THE METHOD, INCLUDING THE DIRECTION AND DISTANCES TO OTHER PUBLIC LAND SURVEY CORNERS USED AS EVIDENCE OR USED FOR PROPORTIONING IN DETERMINING THE CORNER LOCATION.

Not Applicable

AFFIX LAND SURVEYOR SEAL

(I) I, F. CURTIS CROOK, CERTIFY THAT THE LOCATION SHOWN ON THIS RECORD WAS DETERMINED BY ME OR UNDER MY DIRECTION AND CONTROL AND THAT THIS U.S. PUBLIC LAND SURVEY MONUMENT RECORD IS CORRECT AND COMPLETE TO THE BEST OF MY KNOWLEDGE AND BELIEF.

F. Curtis Crook 3-19-02
SIGNATURE DATE

