

RECEIVED  
 JUN 19 2001  
 BY: m. m.

VERNON COUNTY  
 CERTIFIED U.S. PUBLIC LAND SURVEY MONUMENT RECORD

INSTRUCTIONS: THIS RECORD SHALL SHOW THE LOCATION OF THE CORNER AND SHALL INCLUDE ALL OF THE FOLLOWING ELEMENTS (A-I)

(A) IDENTIFY THE CORNER BY REFERENCE TO THE U.S. PUBLIC LAND SURVEY SYSTEM

■ = CORNER MONUMENT RESTORED

WITNESSES TO CORNER LOCATION:

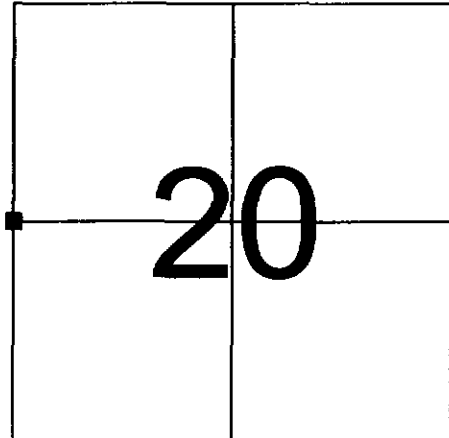
- 1) PATRICK J. DEDERICH
- 2) JOHN E. DEDERICH

VERNON COUNTY COORDINATES

NORTHING: 160,897.28

EASTING: ~~672,829.90~~

670,242.51



SECTION 20, TOWN 13 NORTH, RANGE 5 WEST

(B) DESCRIBE ANY RECORD EVIDENCE, MONUMENT EVIDENCE, OCCUPATIONAL EVIDENCE, TESTIMONIAL EVIDENCE OR ANY OTHER MATERIAL EVIDENCE YOU CONSIDERED, AND WHETHER THE MONUMENT WAS FOUND OR PLACED.

ROBERT LAMPMAN SET AN IRON ROD AT THIS CORNER AND MADE TIES TO TREES IN 1995. THE ROD WAS SUBSEQUENTLY LOST DUE TO THE CONSTRUCTION OR IMPROVEMENT OF A LOGGING ROAD. WE FOUND SEVERAL OF THE TREE TIES AND RESET THE CORNER BY BEST FIT FROM RECORDED DISTANCES. THIS LOCATION FITS QUITE WELL WITH OUR OTHER MEASUREMENTS IN SECTION 20.

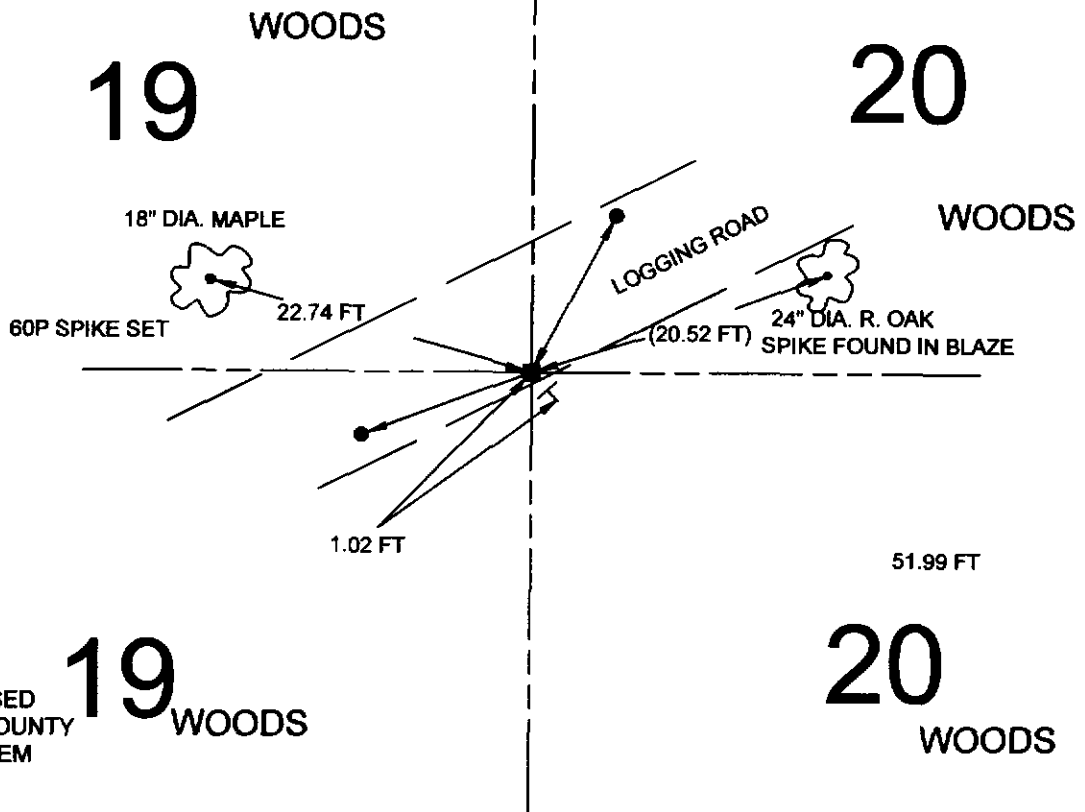
(C) IN THE PLAN VIEW DRAWING BELOW, PROVIDE REFERENCE TIES TO AT LEAST 4 WITNESS MONUMENTS OR, IF THE LOCATION IS WITHIN A MUNICIPALITY, TO AT LEAST 2 WITNESS MONUMENTS. (WITNESS MONUMENTS SHALL BE MADE OF CONCRETE, NATURAL STONE, IRON, OR OTHER EQUALLY DURABLE MATERIAL.) DESCRIBE WITNESS MONUMENTS.

(D) SHOW A PLAN VIEW DRAWING, DEPICTING THE RELEVANT MONUMENTS AND REFERENCE TIES, WHICH IS SUFFICIENTLY DETAILED TO ENABLE ACCURATE RELOCATION OF THE CORNER MONUMENT IF IT IS DISTURBED.

LEDGEND

- ⊥ 2" CHANNEL POST W/GOV'T SIGN
- 3/4" X 24" IRON ROD SET

NOT TO SCALE



BEARINGS ARE BASED ON THE VERNON COUNTY COORDINATE SYSTEM

(E) DESCRIBE ANY MATERIAL DISCREPANCY BETWEEN THE LOCATION OF THE CORNER AS RESTORED OR REESTABLISHED AND THE LOCATION OF THAT CORNER AS PREVIOUSLY RESTORED OR REESTABLISHED BY DISTANCE AND DIRECTION. SHOW THE DISCREPANCY ON THE PLAN VIEW DRAWING UNDER (D), ABOVE. SHOW THE DISTANCES BETWEEN THE CORNER AS PREVIOUSLY RESTORED OR REESTABLISHED AND (1) THE CORNER AS RESTORED OR REESTABLISHED, AND (2) TO AT LEAST 2 OF THE WITNESS MONUMENTS AS SHOWN ON THE DRAWING IN (D), ABOVE.

(F) WAS THE CORNER RESTORED THROUGH ACCEPTANCE OF (1) AN OBLITERATED EVIDENCE LOCATION, OR (2) A FOUND PERPETUATED LOCATION?

A FOUND, PERPETUATED LOCATION.

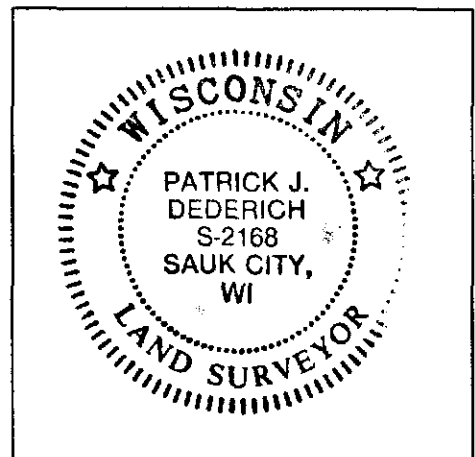
(G & H) WAS THE CORNER REESTABLISHED THROUGH LOST CORNER PROPORTIONATE METHODS? IF SO SHOW THE METHOD, INCLUDING THE DIRECTIONS AND DISTANCES TO OTHER PUBLIC LAND SURVEY CORNERS USED AS EVIDENCE OR USED FOR PROPORTIONING IN DETERMINING THE CORNER LOCATION.

NO.

AFFIX LAND SURVEYOR SEAL

(I) I, PATRICK J. DEDERICH CERTIFY THAT THE LOCATION SHOWN ON THIS RECORD WAS DETERMINED BY ME OR UNDER MY DIRECTION AND CONTROL AND THAT THIS U.S. PUBLIC LAND SURVEY MONUMENT RECORD IS CORRECT AND COMPLETE TO THE BEST OF MY KNOWLEDGE AND BELIEF.

  
SIGNATURE DATE



CERTIFIED LAND CORNER

AUG 3 1995

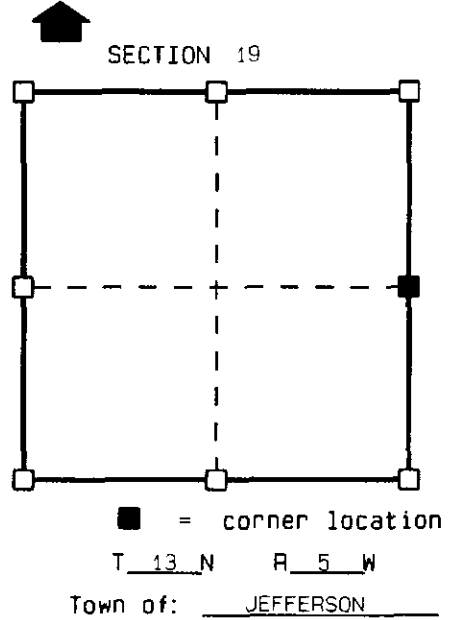
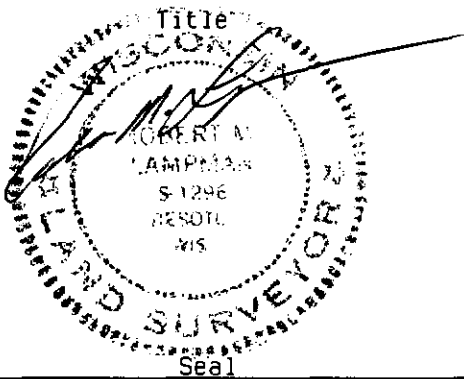
STATE OF WISCONSIN )  
 COUNTY OF VERNON ) S.S.

CERTIFICATE

I, ROBERT M. LAMPMAN do hereby certify that on the 6th day of JUNE 1995, I found ~~(evidence)~~ (no evidence) of the E 1/4 corner of SECTION 19, T 13 N, R 5 W, Fourth Principal Meridian, and I re-established said corner according to the Wisconsin Statutes as shown and described hereon.

Dated this 6th day of JULY 1995

ROBERT M. LAMPMAN R.L.S. S-1296



History of original corner establishment:

ORIGINAL CORNER ESTABLISHED BY S.O. DIXON IN 1845

Description of corner evidence found:

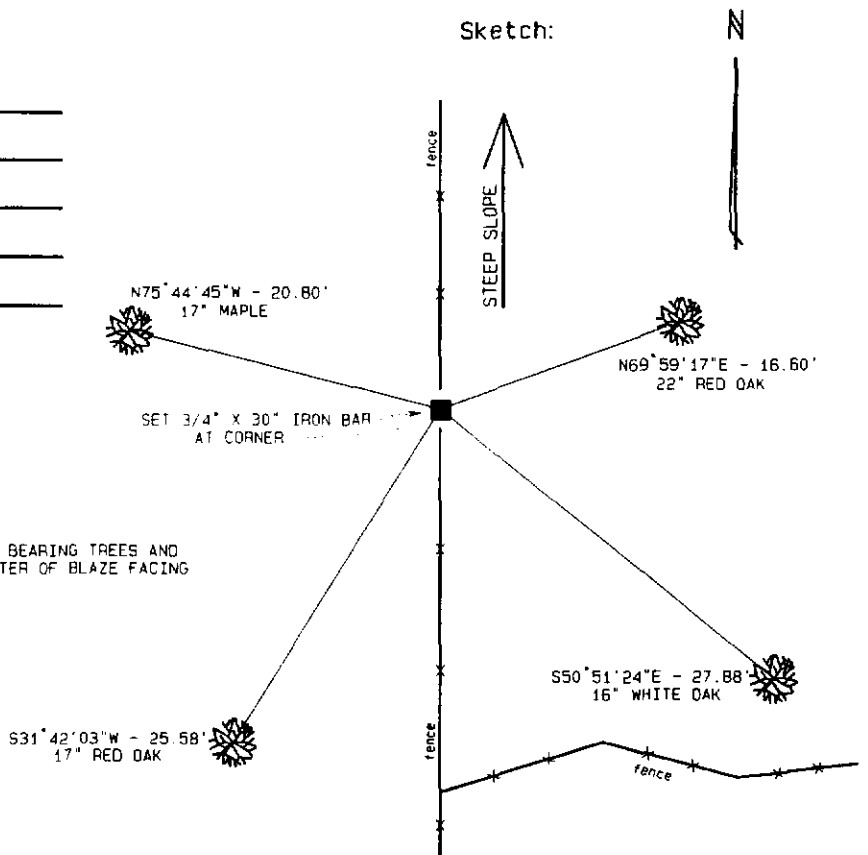
RE-ESTABLISHED CORNER LOCATION USING OCCUPATION AT THE CORNER AREA TO DETERMINE EAST-WEST POSITION. DOUBLED THE DISTANCE SOUTH FROM THE NORTHEAST CORNER TO OCCUPATION AT THE E 1/4 CORNER OF THE NE 1/4 FOR DETERMINATION OF NORTH-SOUTH POSITION.

Description of corner and witness monuments, references and accessories used to perpetuate the original or re-established location of this corner:

Witnesses to corner location:

ROBERT M. LAMPMAN  
 \_\_\_\_\_  
 \_\_\_\_\_  
 \_\_\_\_\_  
 \_\_\_\_\_

Sketch:



NOTE: BLAZED ALL BEARING TREES AND SET SPIKE AT CENTER OF BLAZE FACING CORNER.

SURVEY CONTROL ORDER

Horizontal
Vertical

WISCONSIN COORDINATE SYSTEM

Corner	East (X)	North (Y)	Elevation (Z)	Zone
Control Sta. Name				