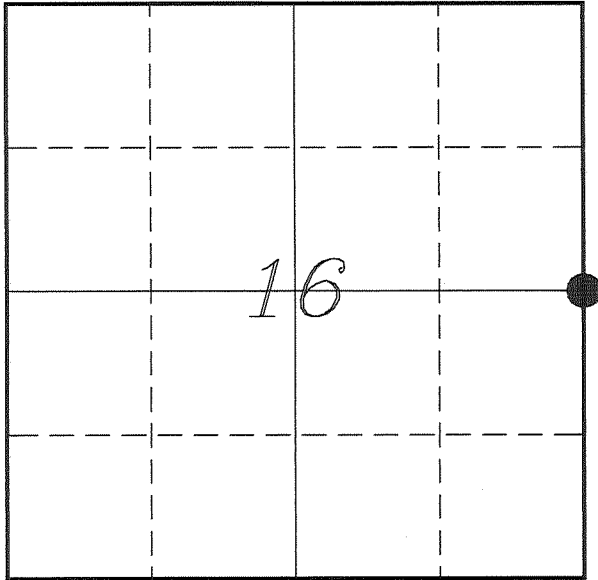


**U. S. PUBLIC LAND SURVEY MONUMENT RECORD**

**SECTION 16, T13N, R5W, TOWN OF JEFFERSON  
VERNON COUNTY, WISCONSIN**



**LOCATION OF LANDMARK**

<b>VERNON COUNTY COORDINATE SYSTEM</b>	
Northing	166227.190
Easting	680764.441
Datum	NAD 1983 (2011)
Elevation	
Datum	
<b>TYPE OF LANDMARK:</b>	
Set Lunde Monument 4" Brass Capped Iron Pipe	
<b>BEARINGS ARE REFERENCED TO:</b>	
Vernon County Coordinates	

Witnesses: Laurence E Johns III

Date: 15 January 2015

*Describe any record evidence, monument evidence, testimonial evidence or any other material evidence you considered and whether the monument was found or restored through acceptance of an obliterated evidence location.*

No bearing trees of record were located.

I found the 1 1/4" iron rod shown on Fairchild's survey. Fairchild does not mention why he set this corner in this location. There is no occupation in the immediate vicinity.

This location is 5.6' East of the straight line between Section Corners.

I accepted the location of the 1 1/4" iron rod as the best available evidence of the original government corner and replaced it with a Lunde Monument.

*Describe or show any material discrepancy between the location of the restored corner and that of the corner previously restored or re-established.*

Samuel D Dixon established this corner in July 1845.

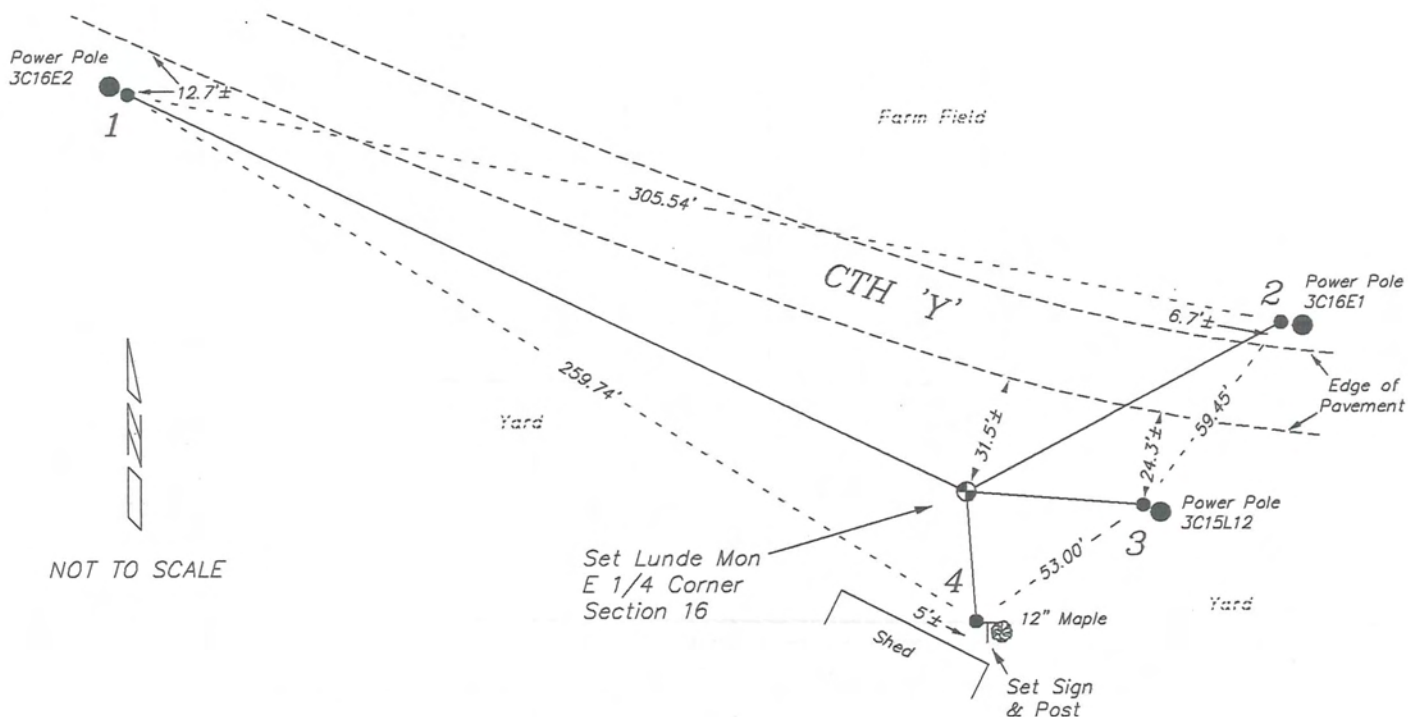
C M Sterling was at this corner, in October 1891, during a survey in Section 16. He shows he found the corner 'by Knower'

C M Sterling was at this corner again, in May 1893, during a survey in Section 16. He shows placing a Lime Stone at this corner.

Paul Fairchild was at this corner, in September 2007, during a survey in Section 16. He shows that he set a 1 1/4" iron rod.

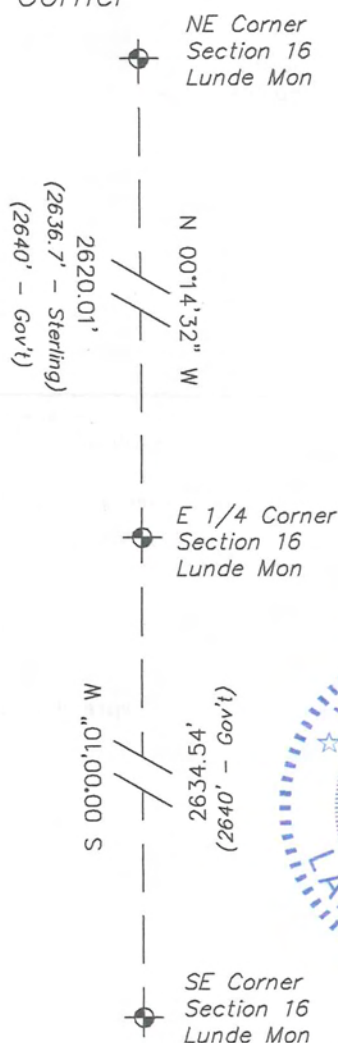
# RECORD OF DURABLE WITNESS MONUMENTS

NO	DESCRIPTION	BEARING	DISTANCE
1	Set 3/4" x 18" Iron Rod 1' East of Power Pole 3C16E2	N 64°29'16" W	241.23'
2	Set 3/4" x 18" Iron Rod 1' West of Power Pole 3C16E1	N 61°51'16" E	92.84'
3	Set 3/4" x 18" Iron Rod 1' West of Power Pole 3C15L12	S 85°31'15" E	46.11'
4	Set 3/4" x 18" Iron Rod 2' Northwest of a 12" Maple	S 04°10'42" E	33.97'



## PLAN VIEW DRAWING OF REFERENCE TIES

Map Showing Distance And Direction To Other Public Land Survey Corners Used For Re-Establishing The Corner



I, Laurence E Johns III PLS 2804, Professional Land Surveyor, hereby certify that the corner location shown on this record was determined by me or under my direction and control, and that this U.S. Public Land Survey Monument Record is correct and complete to the best of my knowledge and belief.

*Laurence E Johns III*  
 Laurence E Johns III PLS 2804  
 Eagle Ridge Surveying  
 PO Box 213  
 Wilton, Wisconsin  
 9 February 2015

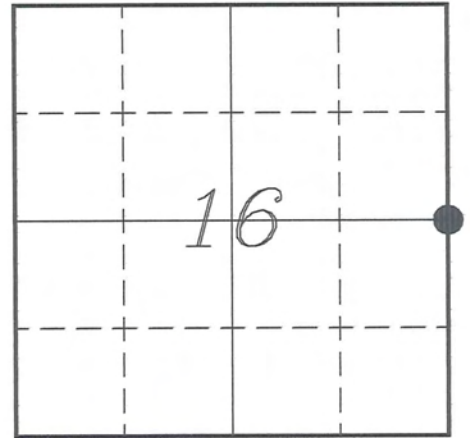


**VERNON COUNTY COORDINATE SUBMISSION FORM**  
 "As An Addendum To"  
**VERNON COUNTY**  
**CERTIFIED U.S. PUBLIC LAND SURVEY MONUMENT RECORD**

INSTRUCTIONS: THIS RECORD FORM SHOULD BE USED WHEN COORDINATES ARE PROVIDED FOR A PUBLIC LAND SURVEY CORNER AND SHALL INCLUDE ALL OF THE FOLLOWING ELEMENTS (A-D)

(A) IDENTIFY THE CORNER BY REFERENCE TO THE U.S. PUBLIC LAND SURVEY SYSTEM IN DIAGRAM AT RIGHT

● = CORNER MONUMENT



(B) COORDINATES:

GEOGRAPHIC (Degrees Minutes Seconds)

LATITUDE: 43° 36' 11.1216" N

LONGITUDE: 90° 58' 09.1088" W

ELLIPSOID HT (m): \_\_\_\_\_

DATUM: NAD 1983 (2011)

GEOD12A ADJ: \_\_\_\_\_

ORTHOMETRIC HT: \_\_\_\_\_

VERNON COUNTY (U.S. FEET)

Coord Quality (+/-)

NORTHING (Y): 166227.190 \_\_\_\_\_

EASTING (X): 680764.441 \_\_\_\_\_

GPS METHOD USED TO COMPUTE COORDINATES (check as applicable)

RTK Observations     Static Baselines     OPUS-RS Solution     OPUS-S Solution

Combination of GPS Observations & Conventional Procedures

Single Angle Measurement     Closed Traverse Loop

Was a Least Squares Adjustment Used to Compute Coordinates? Yes /  No

BASE CONTROL USED FOR COORDINATE COMPUTATION

Station Name	Station Coordinates	Date/Time
<u>OPUS Sta - TS 01</u>	<u>43° 36' 06.5264" N 90° 56' 57.4064" W</u>	<u>01/15/2015 - 10:22</u>
	<u>N - 165750.724 E - 686039.637</u>	
<u>Same</u>		<u>02/04/2015 - 09:25</u>

(C) REASON FOR COORDINATES SUBMITTAL (check one)

Being Filed With a New U.S. PLS Monument Record

To Correct the Coordinates Listed on a Previously Filed PLS Monument Record

To Provide Coordinates for Previously Filed PLS Monument Record without Coordinates

To Provide Supplemental Coordinates for a Previously Filed PLS Monument Record

MOST RECENT PLS MONUMENT RECORD DATE:

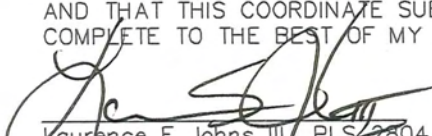
R.L.S. WHO CREATED MOST RECENT PLS MONUMENT RECORD:

(D) AGENT(S) PERFORMING GPS OBSERVATIONS & COORDINATE COMPUTATION

1) LAURENCE E JOHNS III

2) \_\_\_\_\_

I, LAURENCE E JOHNS III RLS 2804, PROFESSIONAL LAND SURVEYOR, HEREBY CERTIFY THAT THE COORDINATES PROVIDED ON THIS RECORD WERE DETERMINED BY ME OR UNDER MY DIRECTION AND CONTROL AND THAT THIS COORDINATE SUBMISSION FORM IS CORRECT AND COMPLETE TO THE BEST OF MY KNOWLEDGE AND BELIEF.

  
 Laurence E Johns III PLS 2804  
 Eagle Ridge Surveying  
 PO Box 213  
 Wilton, Wisconsin  
 9 February 2015

