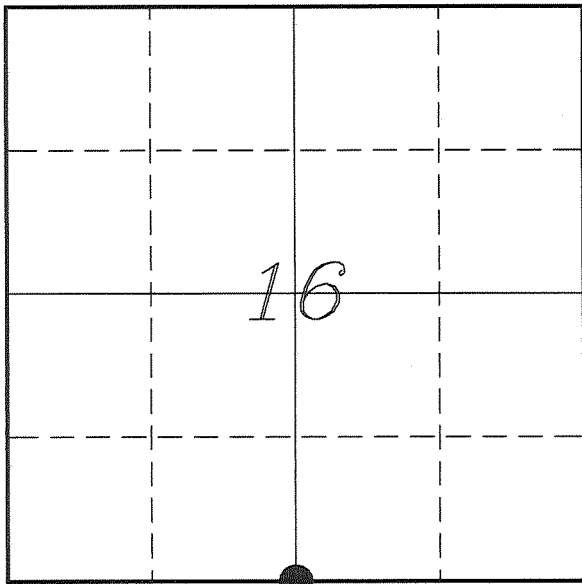


U. S. PUBLIC LAND SURVEY MONUMENT RECORD

SECTION 16, T13N, R5W, TOWN OF JEFFERSON VERNON COUNTY, WISCONSIN



LOCATION OF LANDMARK

VERNON COUNTY COORDINATE SYSTEM	
Northing	163587.888
Easting	678134.185
Datum	NAD 1983 (2011)
Elevation	
Datum	
TYPE OF LANDMARK:	
Set Lunde Monument 4" Brass Capped Iron Pipe	
BEARINGS ARE REFERENCED TO:	
Vernon County Coordinates	

Witnesses: Laurence E Johns III
Al Hoff

Date: 7 March 2015

Describe any record evidence, monument evidence, testimonial evidence or any other material evidence you considered and whether the monument was found or restored through acceptance of an obliterated evidence location.

No bearing trees of record were located.

I found the 3/4" iron rod set by Harding and the Lunde Monument set by Dederich.

Harding does not indicate what he used to determine the location of his corner on his survey, nor did he prepare a tie sheet.

Dederich indicates on his tie sheet that he did extensive research and field work and found no evidence of the original corner, but does not mention Harding's corner from 3 years prior. He indicates that he re-established his corner at the mid-point.

It appears that Harding may have used some form of occupation to determine his location.

I found that a old tree line to the North, with several 30" Hickorys, is in line with this corner. Also found that this location is in line with the East fence line of the Ashbury Cemetery on CTH 'Y', just North of the center of the Section.

In January 2013, Dederich's location for the SW Corner was changed to match Harding's location for that corner, this would change Dederich's location for this corner. And since his procedure of a mid-point would put it much closer to Harding's, I feel that Harding's location is more correct than Dederich's location.

Therefore, I replaced Harding's 3/4" iron rod with a Lunde Monument and removed the brass disk from the existing Lunde Monument set by Dederich.

Describe or show any material discrepancy between the location of the restored corner and that of the corner previously restored or re-established.

Samuel D Dixon established this corner in July 1845.

Michael Harding was at this corner, in October 1999, during a survey in Section 21. He shows that he set a 3/4" iron rod.

Patrich Dederich was at this corner, in June 2002. He shows on his tie sheet that he set a Lunde Monument at the prorated location due to lack of any other evidence.

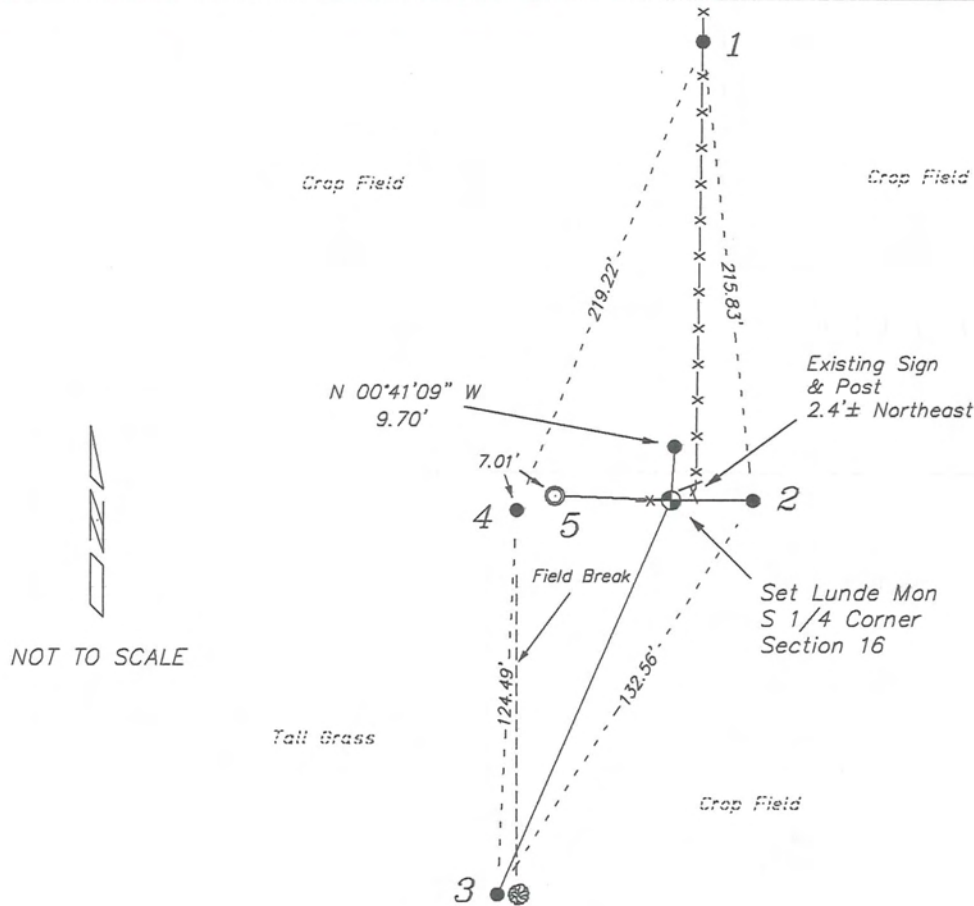
Curtis Cummer was at this corner, in March 2002 and again in May 2012, during surveys in Section 21. He shows that he found a Lunde Monument.

Paul Fairchild was at this corner, in September 2006, during a survey in Section 16. He shows that he found a Lunde Monument.

Daniel Sinniger was at this corner, in September 2009, during a survey in Section 16. He shows that he found a Lunde Monument.

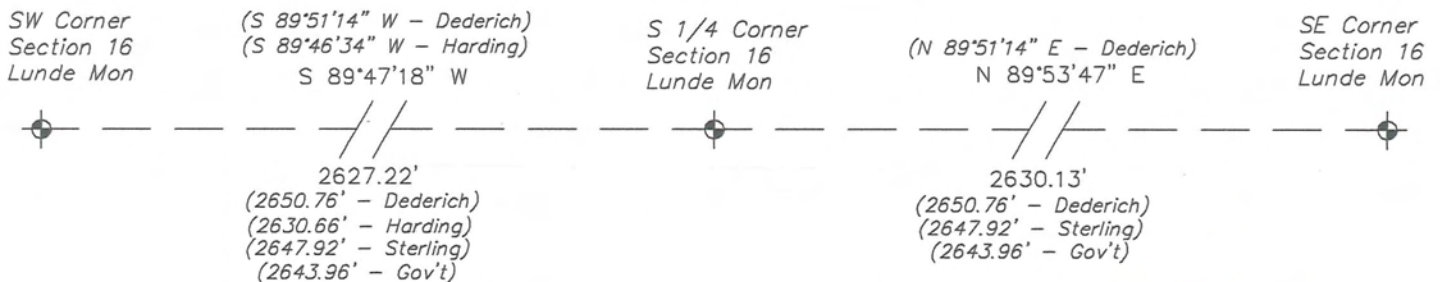
RECORD OF DURABLE WITNESS MONUMENTS

NO	DESCRIPTION	BEARING	DISTANCE
1	Set 3/4" x 18" Iron Rod North Side of a Wooden Fence Post	N 00°46'14" E	215.72'
2	Existing 3/4" Iron Rod Shown on Dederich Tie Sheet	S 89°38'26" E	8.51'
3	Set 3/4" x 18" Iron Rod 2' West of a 12" Ash in Field Break	S 14°10'21" W	129.69'
4	Existing 3/4" Iron Rod Shown on Dederich Tie Sheet	S 87°04'11" W	27.50'
5	Existing 2" Iron Pipe Set by Dederich Lunde Monument with Cap Removed	N 86°59'37" W	20.94'



PLAN VIEW DRAWING OF REFERENCE TIES

Map Showing Distance And Direction To Other Public Land Survey
Corners Used For Re-Establishing The Corner



I, Laurence E Johns III PLS 2804, Professional Land Surveyor, hereby certify that the corner location shown on this record was determined by me or under my direction and control, and that this U.S. Public Land Survey Monument Record is correct and complete to the best of my knowledge and belief.

Laurence E Johns III
 Laurence E Johns III PLS 2804
 Eagle Ridge Surveying
 PO Box 213
 Wilton, Wisconsin
 30 June 2015

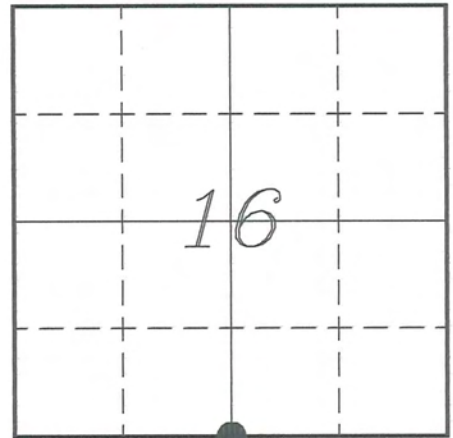


VERNON COUNTY COORDINATE SUBMISSION FORM
 "As An Addendum To"
VERNON COUNTY
CERTIFIED U.S. PUBLIC LAND SURVEY MONUMENT RECORD

INSTRUCTIONS: THIS RECORD FORM SHOULD BE USED WHEN COORDINATES ARE PROVIDED FOR A PUBLIC LAND SURVEY CORNER AND SHALL INCLUDE ALL OF THE FOLLOWING ELEMENTS (A-D)

(A) IDENTIFY THE CORNER BY REFERENCE TO THE U.S. PUBLIC LAND SURVEY SYSTEM IN DIAGRAM AT RIGHT

● = CORNER MONUMENT



(B) COORDINATES:

GEOGRAPHIC (Degrees Minutes Seconds)

LATITUDE: 43° 35' 44.9970" N

LONGITUDE: 90° 58' 44.7692" W

ELLIPSOID HT (m): _____

DATUM: NAD 1983 (2011)

GEOID12A ADJ: -32.388

ORTHOMETRIC HT: _____

VERNON COUNTY (U.S. FEET)

Coord Quality (+/-)

NORTHING (Y): 163587.888

EASTING (X): 678134.185

GPS METHOD USED TO COMPUTE COORDINATES (check as applicable)

- RTK Observations Static Baselines OPUS-RS Solution OPUS-S Solution
 Combination of GPS Observations & Conventional Procedures
 Single Angle Measurement Closed Traverse Loop

Was a Least Squares Adjustment Used to Compute Coordinates? Yes / No

BASE CONTROL USED FOR COORDINATE COMPUTATION

Station Name	Station Coordinates	Date/Time
<u>OPUS Sta - TS 04</u>	<u>43° 35' 57.6435" N 90° 58' 55.1385" W</u>	<u>03/07/2015 - 16:21</u>
	<u>N - 164870.266 E - 677374.149</u>	
<u>Same</u>		<u>04/28/2015 - 09:31</u>

(C) REASON FOR COORDINATES SUBMITTAL (check one)

- Being Filed With a New U.S. PLS Monument Record
 To Correct the Coordinates Listed on a Previously Filed PLS Monument Record
 To Provide Coordinates for Previously Filed PLS Monument Record without Coordinates
 To Provide Supplemental Coordinates for a Previously Filed PLS Monument Record

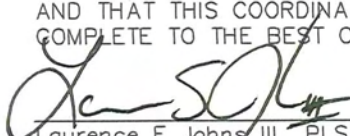
MOST RECENT PLS MONUMENT RECORD DATE:

R.L.S. WHO CREATED MOST RECENT PLS MONUMENT RECORD:

(D) AGENT(S) PERFORMING GPS OBSERVATIONS & COORDINATE COMPUTATION

- 1) LAURENCE E JOHNS III
 2) _____

I, LAURENCE E JOHNS III RLS 2804, PROFESSIONAL LAND SURVEYOR, HEREBY CERTIFY THAT THE COORDINATES PROVIDED ON THIS RECORD WERE DETERMINED BY ME OR UNDER MY DIRECTION AND CONTROL AND THAT THIS COORDINATE SUBMISSION FORM IS CORRECT AND COMPLETE TO THE BEST OF MY KNOWLEDGE AND BELIEF.


 Laurence E Johns III PLS 2804
 Eagle Ridge Surveying
 PO Box 213
 Wilton, Wisconsin
 30 June 2015


 30 Jun 15

RECEIVED

JAN 22 2002

m.m.

BY:

VERNON COUNTY CERTIFIED U.S. PUBLIC LAND SURVEY MONUMENT RECORD

INSTRUCTIONS: THIS RECORD SHALL SHOW THE LOCATION OF THE CORNER AND SHALL INCLUDE ALL OF THE FOLLOWING ELEMENTS (A-I)

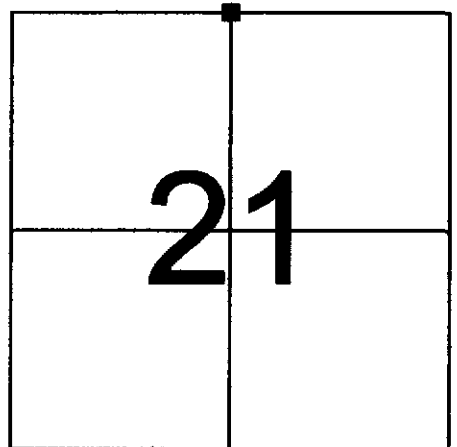
(A) IDENTIFY THE CORNER BY REFERENCE TO THE U.S. PUBLIC LAND SURVEY SYSTEM

■ = CORNER MONUMENT RESTORED

WITNESSES TO CORNER LOCATION:

- 1) PATRICK J. DEDERICH
- 2) JOHN E. DEDERICH

VERNON COUNTY COORDINATES
 NORTHING: 163,588.88
 EASTING: 678,113.56



SECTION 21, TOWN 13 NORTH, RANGE 5 WEST

(B) DESCRIBE ANY RECORD EVIDENCE, MONUMENT EVIDENCE, OCCUPATIONAL EVIDENCE, TESTIMONIAL EVIDENCE OR ANY OTHER MATERIAL EVIDENCE YOU CONSIDERED, AND WHETHER THE MONUMENT WAS FOUND OR PLACED.

EXTENSIVE FIELD AND RECORD SEARCH SHOWED NO EVIDENCE OF THE ORIGINAL LOCATION OF THIS CORNER. AS A LAST RESORT, SINGLE PROPORTIONAL MEASUREMENT WAS USED AS BEST AVAILABLE EVIDENCE. MONUMENT WAS SET AND TIED AS SHOWN.

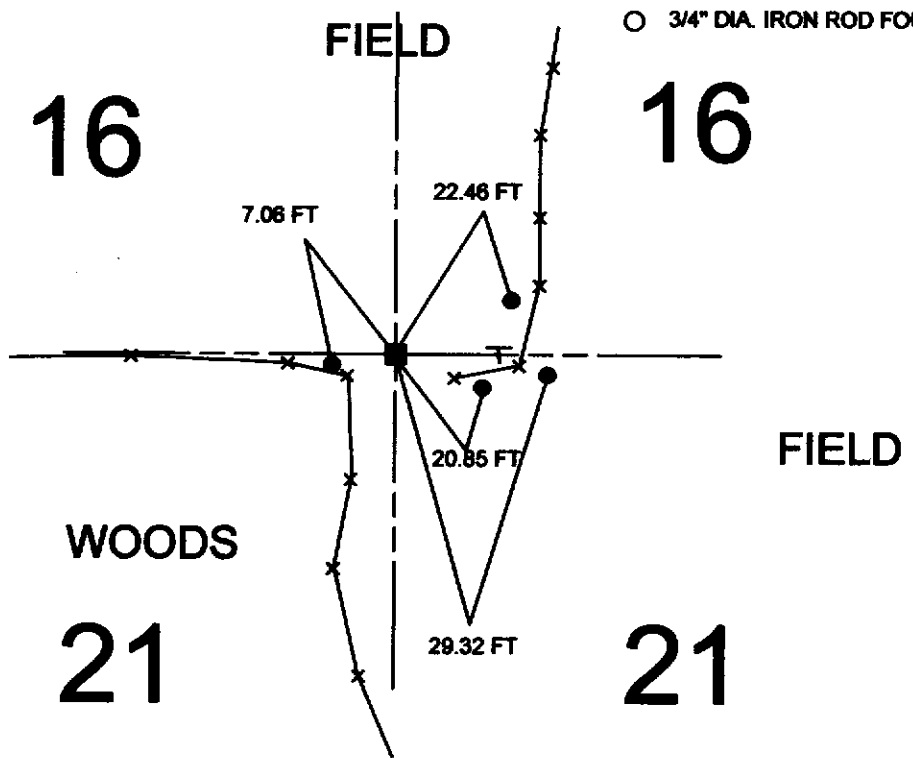
(C) IN THE PLAN VIEW DRAWING BELOW, PROVIDE REFERENCE TIES TO AT LEAST 4 WITNESS MONUMENTS OR, IF THE LOCATION IS WITHIN A MUNICIPALITY, TO AT LEAST 2 WITNESS MONUMENTS. (WITNESS MONUMENTS SHALL BE MADE OF CONCRETE, NATURAL STONE, IRON, OR OTHER EQUALLY DURABLE MATERIAL.) DESCRIBE WITNESS MONUMENTS.

LEGEND

(D) SHOW A PLAN VIEW DRAWING, DEPICTING THE RELEVANT MONUMENTS AND REFERENCE TIES, WHICH IS SUFFICIENTLY DETAILED TO ENABLE ACCURATE RELOCATION OF THE CORNER MONUMENT IF IT IS DISTURBED.

- 3/4" X 24" IRON ROD SET
- LUNDE MONUMENT
- └ 2" CHANNEL POST W/GOV'T SIGN
- 3/4" DIA. IRON ROD FOUND

NOT TO SCALE



BEARINGS ARE BASED ON THE VERNON COUNTY COORDINATE SYSTEM

(E) DESCRIBE ANY MATERIAL DISCREPANCY BETWEEN THE LOCATION OF THE CORNER AS RESTORED OR REESTABLISHED AND THE LOCATION OF THAT CORNER AS PREVIOUSLY RESTORED OR REESTABLISHED BY DISTANCE AND DIRECTION. SHOW THE DISCREPANCY ON THE PLAN VIEW DRAWING UNDER (D), ABOVE. SHOW THE DISTANCES BETWEEN THE CORNER AS PREVIOUSLY RESTORED OR REESTABLISHED AND (1) THE CORNER AS RESTORED OR REESTABLISHED, AND (2) TO AT LEAST 2 OF THE WITNESS MONUMENTS AS SHOWN ON THE DRAWING IN (D), ABOVE.

(F) WAS THE CORNER RESTORED THROUGH ACCEPTANCE OF (1) AN OBLITERATED EVIDENCE LOCATION, OR (2) A FOUND PERPETUATED LOCATION?

(1) AN OBLITERATED EVIDENCE LOCATION.

(G & H) WAS THE CORNER REESTABLISHED THROUGH LOST CORNER PROPORTIONATE METHODS? IF SO SHOW THE METHOD, INCLUDING THE DIRECTIONS AND DISTANCES TO OTHER PUBLIC LAND SURVEY CORNERS USED AS EVIDENCE OR USED FOR PROPORTIONING IN DETERMINING THE CORNER LOCATION.

YES.



AFFIX LAND SURVEYOR SEAL

(I) I, PATRICK J. DEDERICH CERTIFY THAT THE LOCATION SHOWN ON THIS RECORD WAS DETERMINED BY ME OR UNDER MY DIRECTION AND CONTROL AND THAT THIS U.S. PUBLIC LAND SURVEY MONUMENT RECORD IS CORRECT AND COMPLETE TO THE BEST OF MY KNOWLEDGE AND BELIEF.


SIGNATURE

11/1/2002
DATE

