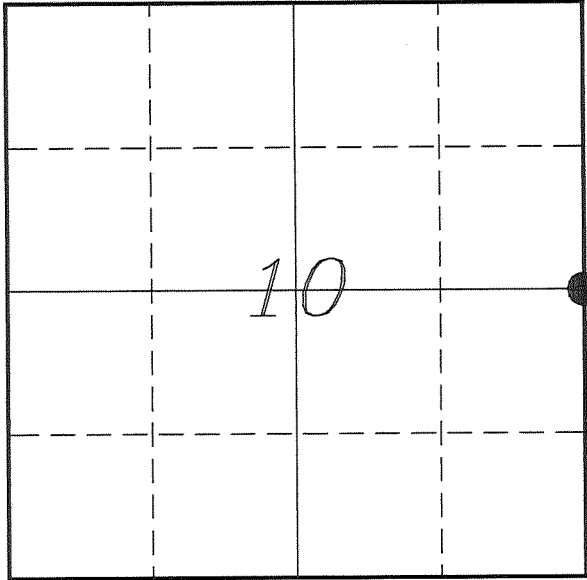


U. S. PUBLIC LAND SURVEY MONUMENT RECORD

**SECTION 10, T13N, R5W, TOWN OF JEFFERSON
VERNON COUNTY, WISCONSIN**



LOCATION OF LANDMARK

VERNON COUNTY COORDINATE SYSTEM	
Northing	171505.318
Easting	685981.868
Datum	NAD 1983 (2011)
Elevation	
Datum	
TYPE OF LANDMARK:	
Set Lunde Monument	
BEARINGS ARE REFERENCED TO:	
Vernon County Coordinates	

Witnesses: Laurence E Johns III

Date: 15 January 2015

Describe any record evidence, monument evidence, testimonial evidence or any other material evidence you considered and whether the monument was found or restored through acceptance of an obliterated evidence location.

No bearing trees of record were located.

This location falls at the end of McKibben Lane and at the beginning of a driveway from that point.

I did not locate a stone but i did find an 1 1/4" iron rod. The iron rod was bent possibly from being hit by either a grader or a plow.

This location fits well with the corners to the North and South and is 10.3' West of the straight line.

This location also seems to fit with occupation to the North and South.

I accepted this location as the best available evidence of the original government corner and placed a Lunde Monument about 4 inches below the surface.

Describe or show any material discrepancy between the location of the restored corner and that of the corner previously restored or re-established.

Samuel D Dixon established this corner in July 1845.

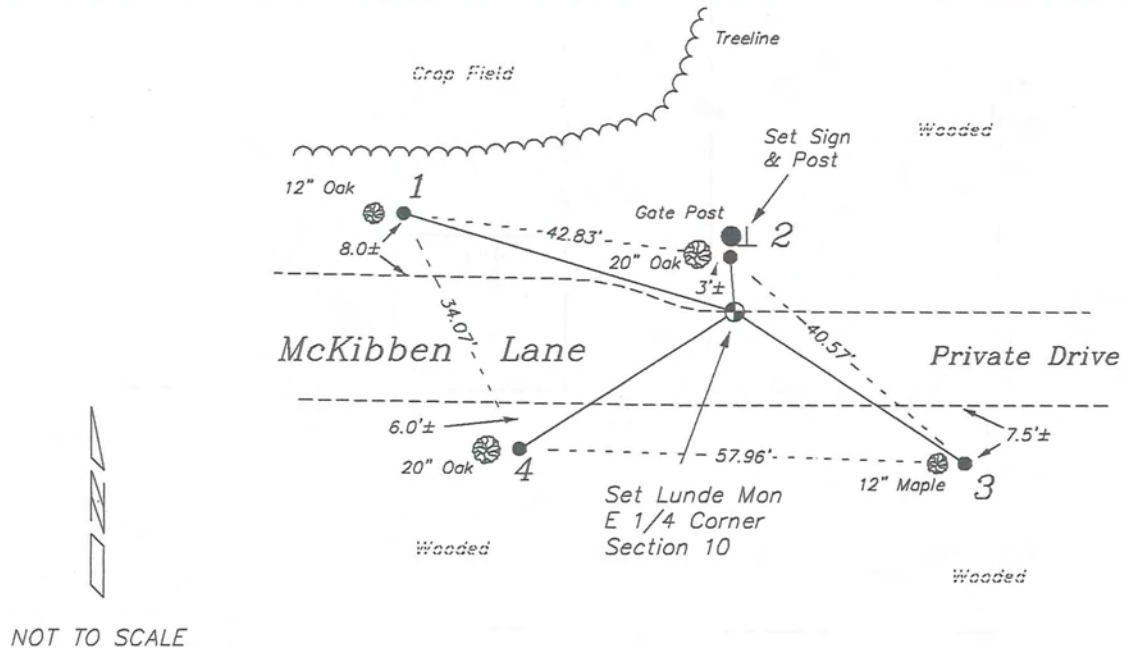
Wm Knower was at this corner, in January 1891, during a survey in Section 10. He shows that he re-established this corner at the mid-point.

Chris Running was at this corner, in October 2008, during a survey in Sections 10 & 11. He shows that he set a 1 1/4" iron bar.

Mike Harding was at this corner, in December 2009, during a survey in Section 11. He shows that he found a stone monument

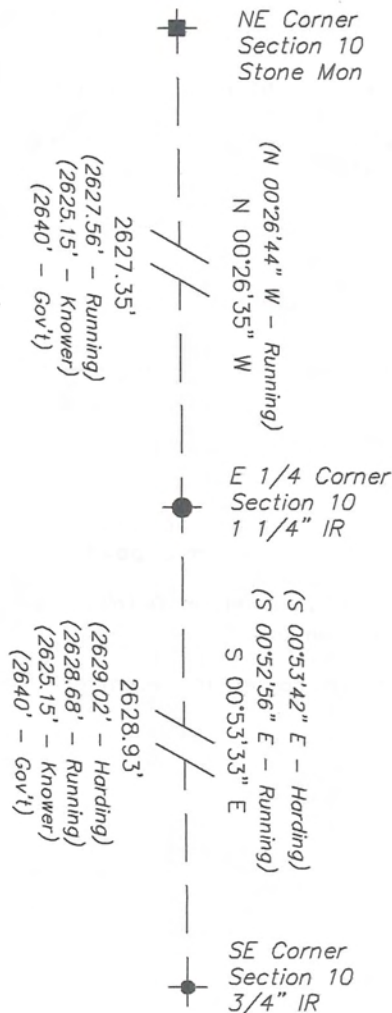
RECORD OF DURABLE WITNESS MONUMENTS

NO	DESCRIPTION	BEARING	DISTANCE
1	Set 3/4" x 18" Iron Rod 2' East of a 12" Oak	N 73°29'12" W	44.84'
2	Set 3/4" x 18" Iron Rod South Side of Wooden Gate Post	N 04°17'23" W	7.10'
3	Set 3/4" x 18" Iron Rod 2' East of a 12" Maple	S 56°41'49" E	35.85'
4	Set 3/4" x 18" Iron Rod 2' East of a 20" Oak	S 57°28'25" W	33.17'



PLAN VIEW DRAWING OF REFERENCE TIES

Map Showing Distance And Direction To Other Public Land Survey Corners Used For Re-Establishing The Corner



I, Laurence E Johns III PLS 2804, Professional Land Surveyor, hereby certify that the corner location shown on this record was determined by me or under my direction and control, and that this U.S. Public Land Survey Monument Record is correct and complete to the best of my knowledge and belief.

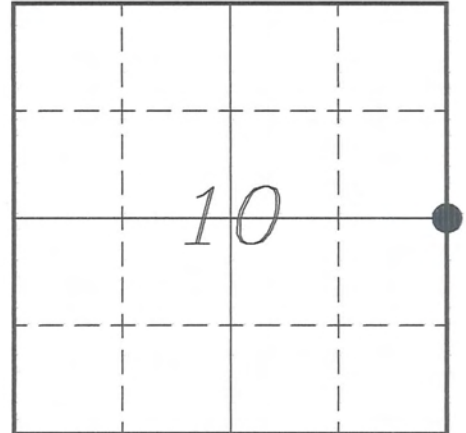
Laurence E. Johns III
 Laurence E Johns III PLS 2804
 Eagle Ridge Surveying
 PO Box 213
 Wilton, Wisconsin
 31 July 2015

VERNON COUNTY COORDINATE SUBMISSION FORM
 "As An Addendum To"
VERNON COUNTY
CERTIFIED U.S. PUBLIC LAND SURVEY MONUMENT RECORD

INSTRUCTIONS: THIS RECORD FORM SHOULD BE USED WHEN COORDINATES ARE PROVIDED FOR A PUBLIC LAND SURVEY CORNER AND SHALL INCLUDE ALL OF THE FOLLOWING ELEMENTS (A-D)

(A) IDENTIFY THE CORNER BY REFERENCE TO THE U.S. PUBLIC LAND SURVEY SYSTEM IN DIAGRAM AT RIGHT

● = CORNER MONUMENT



T 13 N, R 5 W

(B) COORDINATES:

GEOGRAPHIC (Degrees Minutes Seconds)

LATITUDE: 43° 37' 03.3566" N

LONGITUDE: 90° 56' 58.3405" W

ELLIPSOID HT (m): _____

DATUM: NAD 1983 (2011)

GEOID12A ADJ: _____

ORTHOMETRIC HT: _____

VERNON COUNTY (U.S. FEET)

Coord Quality (+/-)

NORTHING (Y): 171505.390 _____

EASTING (X): 685982.411 _____

GPS METHOD USED TO COMPUTE COORDINATES (check as applicable)

- RTK Observations Static Baselines OPUS-RS Solution OPUS-S Solution
 Combination of GPS Observations & Conventional Procedures
 Single Angle Measurement Closed Traverse Loop

Was a Least Squares Adjustment Used to Compute Coordinates? Yes / No

BASE CONTROL USED FOR COORDINATE COMPUTATION

Station Name	Station Coordinates	Date/Time
<u>OPUS Sta - TS 01</u>	<u>43° 36' 06.5264" N 90° 56' 57.4064" W</u>	<u>01/15/2015 - 12:30</u>
	<u>N - 165750.724 E - 686039.637</u>	
<u>Same</u>		<u>01/18/2014 - 15:15</u>

(C) REASON FOR COORDINATES SUBMITTAL (check one)

- Being Filed With a New U.S. PLS Monument Record
 To Correct the Coordinates Listed on a Previously Filed PLS Monument Record
 To Provide Coordinates for Previously Filed PLS Monument Record without Coordinates
 To Provide Supplemental Coordinates for a Previously Filed PLS Monument Record

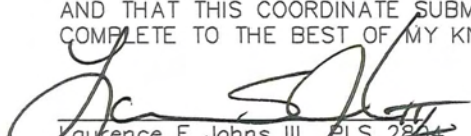
MOST RECENT PLS MONUMENT RECORD DATE:

R.L.S. WHO CREATED MOST RECENT PLS MONUMENT RECORD:

(D) AGENT(S) PERFORMING GPS OBSERVATIONS & COORDINATE COMPUTATION

- 1) LAURENCE E JOHNS III
 2) _____

I, LAURENCE E JOHNS III RLS 2804, PROFESSIONAL LAND SURVEYOR, HEREBY CERTIFY THAT THE COORDINATES PROVIDED ON THIS RECORD WERE DETERMINED BY ME OR UNDER MY DIRECTION AND CONTROL AND THAT THIS COORDINATE SUBMISSION FORM IS CORRECT AND COMPLETE TO THE BEST OF MY KNOWLEDGE AND BELIEF.


 Laurence E Johns III PLS 2804
 Eagle Ridge Surveying
 PO Box 213
 Wilton, Wisconsin
 31 July 2015

