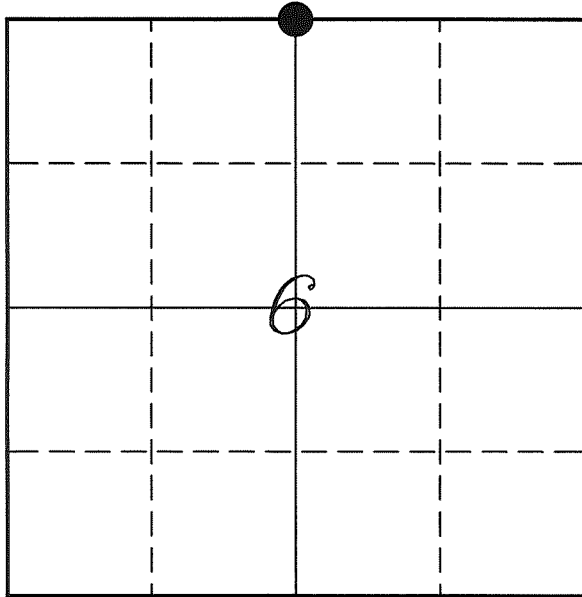

U. S. PUBLIC LAND SURVEY MONUMENT RECORD

SECTION 6, T13N, R5W, TOWN OF JEFFERSON VERNON COUNTY, WISCONSIN



LOCATION OF LANDMARK

Crew: Laurence E Johns III
Larry Handschy

Date: 20 May 2010

VERNON COUNTY COORDINATE SYSTEM	
Northing	178674.835
Easting	667590.433
Datum	NAD 1983 (2007)
Elevation	
Datum	
TYPE OF LANDMARK:	
Set 1 1/4" x 18" Iron Rod	
BEARINGS ARE REFERENCED TO:	
Vernon County Coordinates	

Describe any record evidence, monument evidence, testimonial evidence or any other material evidence you considered and whether the monument was found or restored through acceptance of an obliterated evidence location.

Chapter 5, Section 35 of the Manual of Surveying Instructions along with Chapter 10, Principle 18 of "Brown's Boundary Control and Legal Principles", 6th edition, states that a N 1/4 Corner of a closing section should be set at the mid-point or pro-rated location between the NE & NW Corners of the closing section. And by definition is not dependent on the location of the S 1/4 Corner of the Section to the North.

Prior common practice has been to determine a mean offset distance and set the quarter-corner accordingly. That practice by rule is incorrect.

I have followed the rule stated in the Manual and Brown's Principles in determining the location of this corner.

This resulted in an offset distance from the S 1/4 Corner of 31 of 1.79 feet East.

The corner falls just on the Northeast side of a 24" Maple and because of the extensive root system was not able to set a Lunde Monument. Set a 1 1/4" Iron Rod at the corner.

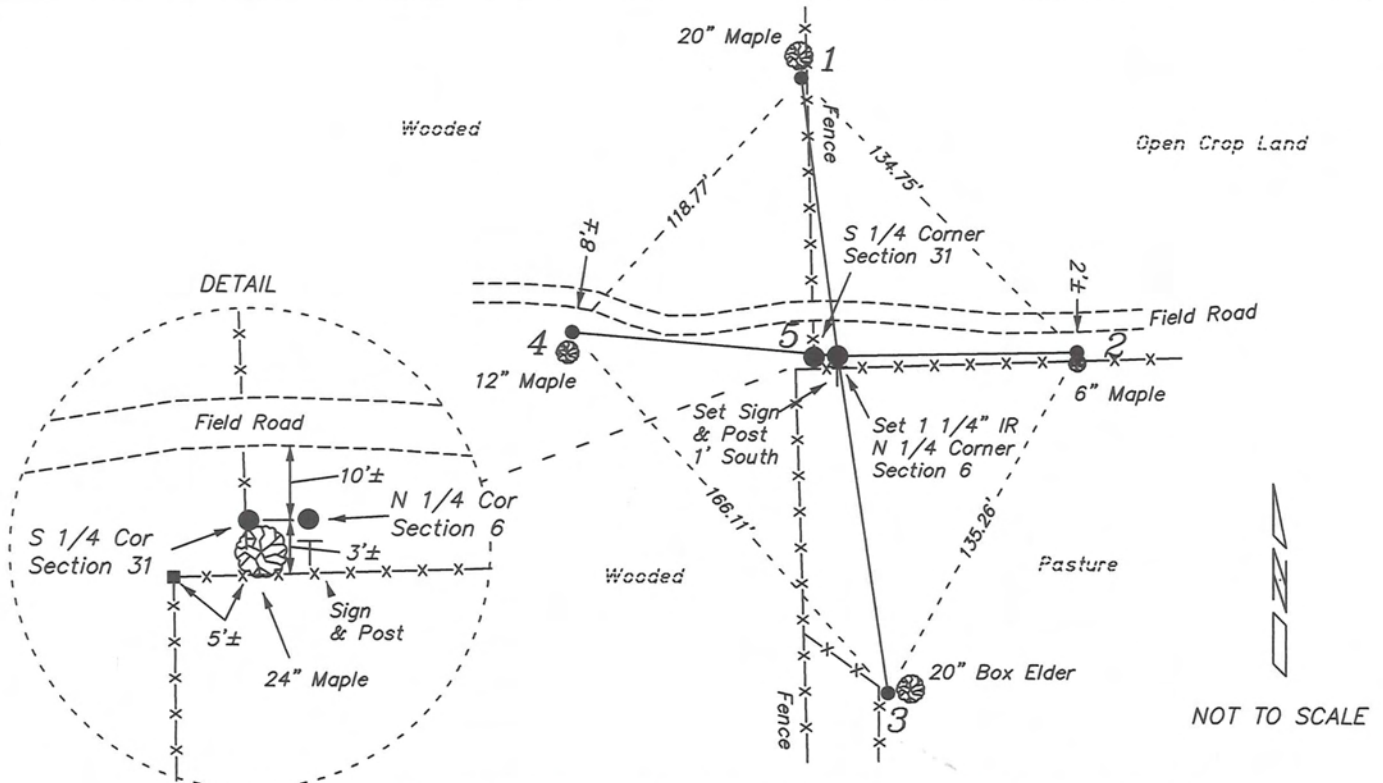
Describe or show any material discrepancy between the location of the restored corner and that of the corner previously restored or re-established.

This corner was not set during the original government survey.

No other recorded surveys used or set this corner.

RECORD OF DURABLE WITNESS MONUMENTS

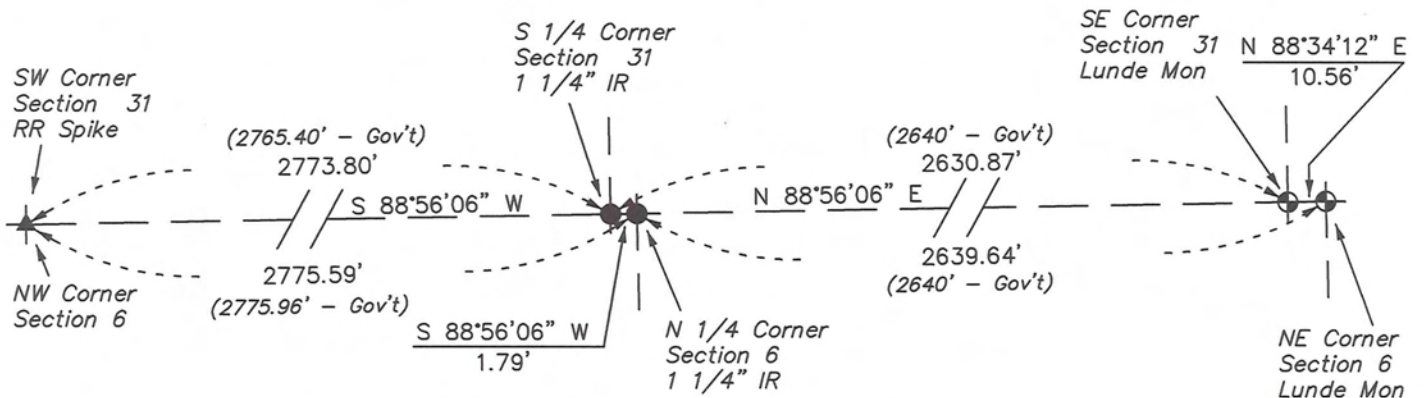
NO	DESCRIPTION	BEARING	DISTANCE
1	Set 3/4" x 18" Iron Rod In Fence/South Side of 20" Maple	N 03°38'42" W	96.93'
2	Set 3/4" x 18" Iron Rod In Fence/North Side of 6" Maple	N 87°16'05" E	90.03'
3	Set 3/4" x 18" Iron Rod West Side of 20" Box Elder	S 11°33'39" E	118.96'
4	Set 3/4" x 18" Iron Rod North Side of 12" Maple	N 84°22'48" W	84.23'
5	1 1/4" Iron Rod S 1/4 Corner - Section 31	S 88°56'06" W	1.79'



PLAN VIEW DRAWING OF REFERENCE TIES

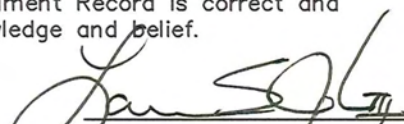
Map Showing Distance And Direction To Other Public Land Survey
Corners Used For Re-Establishing The Corner

T 14 N - R 5 W



T 13 N - R 5 W

I, Laurence E Johns III RLS 2804, Registered Land Surveyor, hereby certify that the corner location shown on this record was determined by me or under my direction and control, and that this U.S. Public Land Survey Monument Record is correct and complete to the best of my knowledge and belief.


 Laurence E Johns III RLS 2804
 Eagle Ridge Surveying, LLC
 PO Box 213
 Wilton, Wisconsin
 20 May 2010

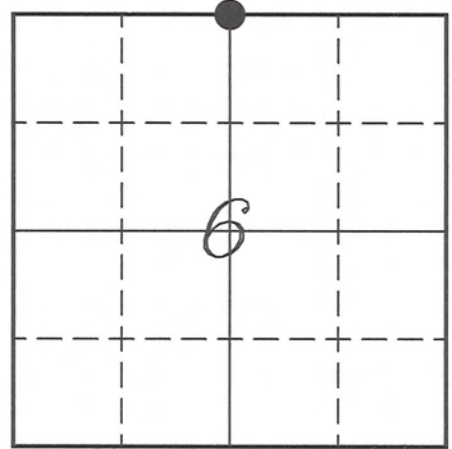


VERNON COUNTY COORDINATE SUBMISSION FORM
"As An Addendum To"
VERNON COUNTY
CERTIFIED U.S. PUBLIC LAND SURVEY MONUMENT RECORD

INSTRUCTIONS: THIS RECORD FORM SHOULD BE USED WHEN COORDINATES ARE PROVIDED FOR A PUBLIC LAND SURVEY CORNER AND SHALL INCLUDE ALL OF THE FOLLOWING ELEMENTS (A-D)

(A) IDENTIFY THE CORNER BY REFERENCE TO THE U.S. PUBLIC LAND SURVEY SYSTEM IN DIAGRAM AT RIGHT

● = CORNER MONUMENT



(B) COORDINATES:

GEOGRAPHIC (Degrees Minutes Seconds)
 LATITUDE: 43° 38' 13.7203" N
 LONGITUDE: 91° 01' 08.6219" W
 ELLIPSOID HT (m): _____
 DATUM: NAD 1983 (2007)
 GEOID03 ADJ: -32.282
 OTHROMETRIC HT: _____

VERNON COUNTY (U.S. FEET) Coord Quality (+/-)
 NORTHING (Y): 178674.835 _____
 EASTING (X): 667590.433 _____

GPS METHOD USED TO COMPUTE COORDINATES (check as applicable)

- RTK Observations Static Baselines OPUS-RS Solution OPUS-S Solution
 Combination of GPS Observations & Conventional Procedures

Was a Least Squares Adjustment Used to Compute Coordinates? Yes / No

BASE CONTROL USED FOR COORDINATE COMPUTATION

Station Name	Station Coordinates	Date/Time
<u>OPUS Control - CN32</u>	<u>43° 38' 27.6640" N 90° 59' 58.3490" W</u>	<u>05/20/2010 - 15:15</u>
	<u>N - 180072.708 E - 672762.114</u>	
<u>Same</u>		<u>05/23/2010 - 10:53</u>

(C) REASON FOR COORDINATES SUBMITTAL (check one)

- Being Filed With a New U.S. PLS Monument Record
 To Correct the Coordinates Listed on a Previously Filed PLS Monument Record
 To Provide Coordinates for Previously Filed PLS Monument Record without Coordinates
 To Provide Supplemental Coordinates for a Previously Filed PLS Monument Record

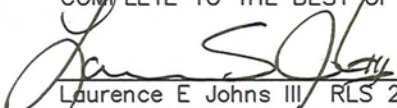
MOST RECENT PLS MONUMENT RECORD DATE:

R.L.S. WHO CREATED MOST RECENT PLS MONUMENT RECORD:

(D) AGENT(S) PERFORMING GPS OBSERVATIONS & COORDINATE COMPUTATION

- 1) LAURENCE E JOHNS III
 2) _____

I, LAURENCE E JOHNS III RLS 2804, REGISTERED LAND SURVEYOR, HEREBY CERTIFY THAT THE COORDINATES PROVIDED ON THIS RECORD WERE DETERMINED BY ME OR UNDER MY DIRECTION AND CONTROL AND THAT THIS COORDINATE SUBMISSION FORM IS CORRECT AND COMPLETE TO THE BEST OF MY KNOWLEDGE AND BELIEF.


 Laurence E Johns III, RLS 2804
 Eagle Ridge Surveying, LLC
 PO Box 213
 Wilton, Wisconsin
 23 May 2010

