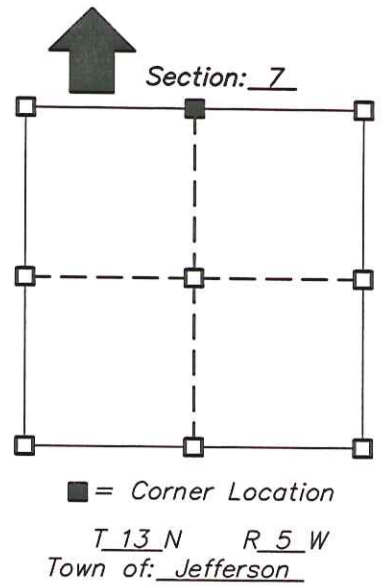


U.S. PUBLIC LAND SURVEY MONUMENT RECORD - VERNON COUNTY, WI

I William R. Bulawa, do hereby certify that on the 12th day of January, 2009, found evidence of the West Quarter Corner of Section 18, T13N, R5W, Fourth Principal Meridian, and I re-established said corner according to the Wisconsin Statutes as shown and described hereon. The U.S. public land survey monument record is correct and complete to the best of my knowledge and belief.

Dated this 15th day of April, 2009

William R. Bulawa
 William R. Bulawa, R.L.S. No. S-2167



Seal

History of original corner establishment:

SEE SHEET 2 OF 5

Description of corner evidence found:

SEE SHEET 2 OF 5

Description of corner and witness monuments, references and accessories used to perpetrate the original or re-established location of this corner:

Witnesses to corner location:

William R. Bulawa

James C. Schroeder

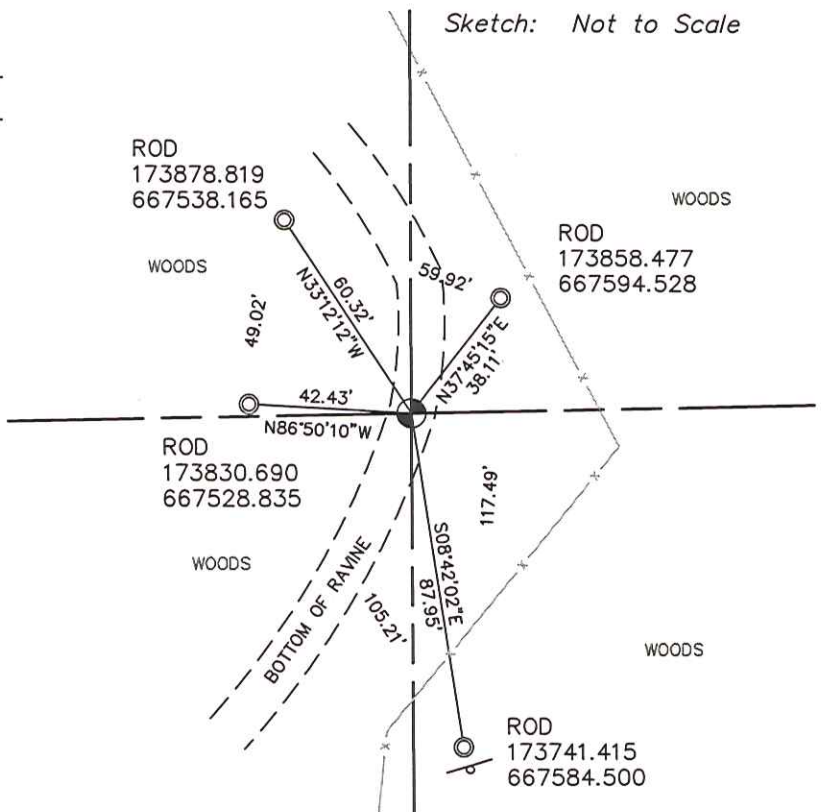
CORNERS USED FOR VERNON COUNTY
 COORDINATES

JEFFERSON C GPS	HARMONY E GPS
166977.735	150073.061
686034.476	661090.001

ESOFEA GPS
 169888.050
 663035.820

LEGEND

- SECTION CORNER NO MONUMENT AT THE N1/4 COR. SEC. 7
- SET 3/4" DIA. X 24" IRON RE-BAR, 1.50 LBS./LIN.FT.
- COUNTY SIGN



Horizontal: NAD 83 (997)

Corner	North (Y)	East (X)	Elevation (Z)	Zone
Vernon Co. Coord.	173828.348	667571.196		

U.S. PUBLIC LAND SURVEY MONUMENT RECORD - VERNON COUNTY, WI

I William R. Bulawa, do hereby certify that on the 12th day of January, 2009, found evidence of the West Quarter Corner of Section 18, T13N, R5W, Fourth Principal Meridian, and I re-established said corner according to the Wisconsin Statutes as shown and described hereon. The U.S. public land survey monument record is correct and complete to the best of my knowledge and belief.

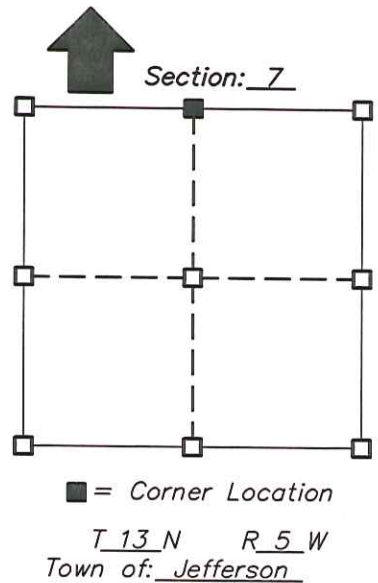
Dated this 15th day of April, 2009

William R. Bulawa

William R. Bulawa, R.L.S. No. S-2167



Seal



History of original corner establishment:

Original corner set by S.D. Dixon in July 1845.

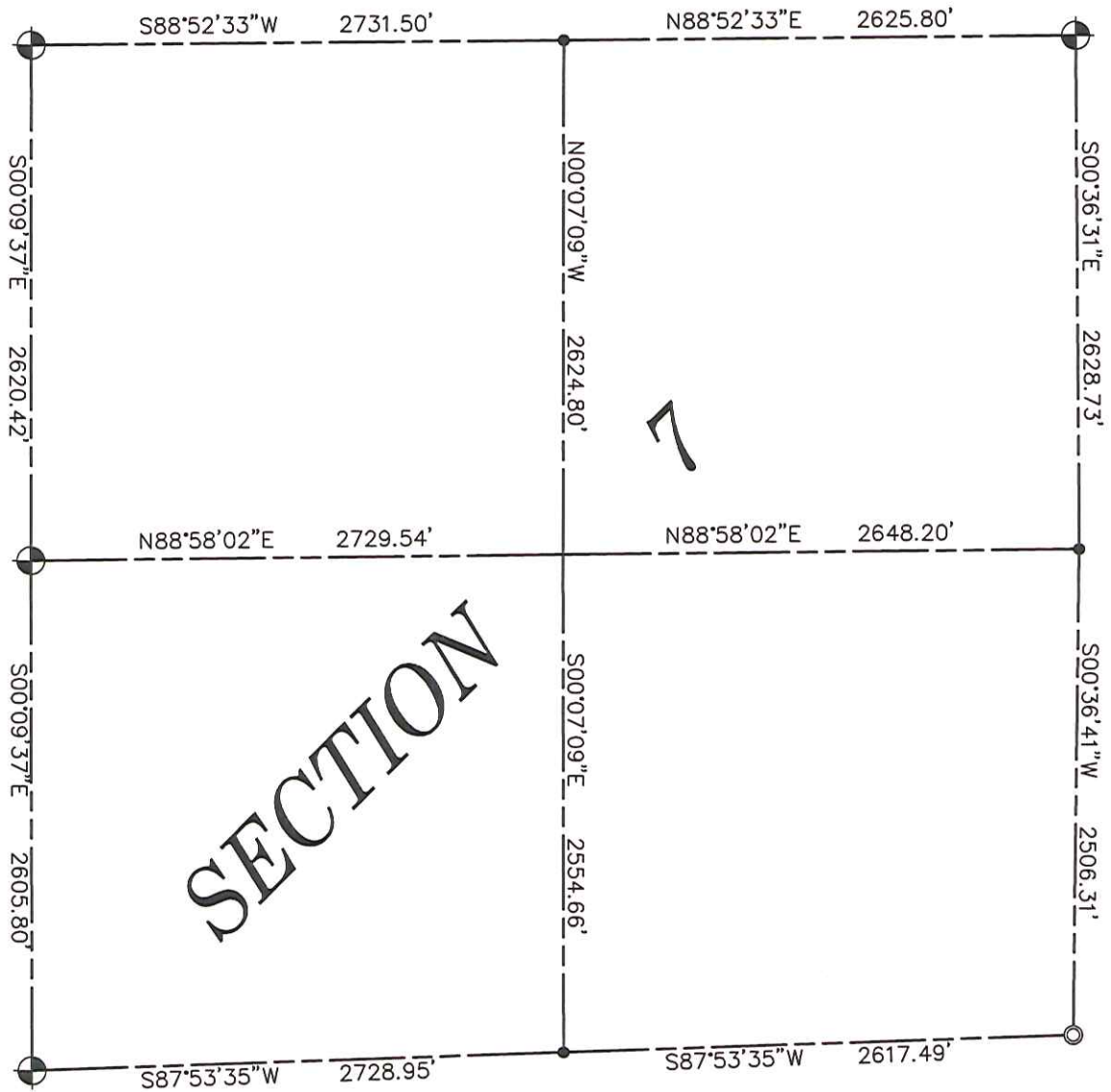
Description of corner evidence found:

Found old north-south fences line both north and south of the ravine. I used these fences for the east-west position of the corner. I placed the corner on line between the NE and NW corners of Section 7. This position fits the original distances on the north line of Section 7 very well. The corner falls in the washed out bottom of the ravine. I could not set a monument because of large rocks. Also the corner would be washed out with a big storm. I set 4 ties to the corner with Vernon County Coordinates.




Horizontal: NAD 83 (1997)

Corner	North (Y)	East (X)	Elevation (Z)	Zone
Vernon Co. Coord.	173828.348	667571.196		

DATA SHEET
SECTION 7, T13N, R5W
TOWN OF JEFFERSON, VERNON COUNTY, WISCONSIN.



LEGEND

-  SET VERNON COUNTY LUNDE MONUMENT
-  EXISTING VERNON COUNTY LUNDE MONUMENT
-  COMPUTED CORNER LOCATION NO MONUMENT SET

Dated this 15th day of April, 2009

William R. Bulawa
William R. Bulawa, R.L.S. No. S-2167

VERNON COUNTY COORDINATE FORM

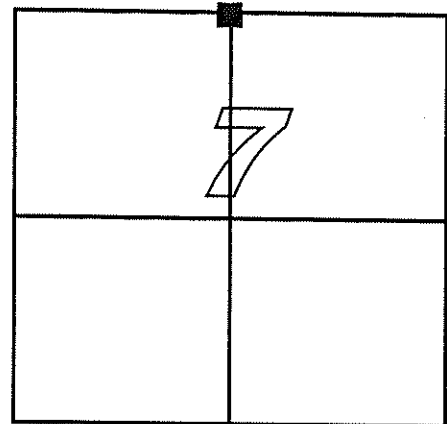
"As An Addendum To"

A CERTIFIED U.S. PUBLIC LAND SURVEY MONUMENT RECORD

INSTRUCTIONS: THIS RECORD FORM SHOULD BE USED WHEN COORDINATES ARE PROVIDED FOR A PUBLIC LAND SURVEY CORNER AND SHALL INCLUDE ALL OF THE FOLLOWING ELEMENTS (A-D)

(A) IDENTIFY THE CORNER BY REFERENCE TO THE U.S. PUBLIC LAND SURVEY SYSTEM IN DIAGRAM AT RIGHT

■ = CORNER MONUMENT



T 13 N, R 5 W

(B) COORDINATES:

GEOGRAPHIC (Degrees Minutes Decimal Seconds to 4 places):

LATITUDE: 43-37-25.857676

LONGITUDE: 091-01-08.696452

ELLIPSOID HT (m): _____

HORIZONTAL DATUM: NAD 83(2007)

ORTHOMETRIC HT (U.S. ft): _____

VERTICAL DATUM: _____

VERNON COUNTY (U.S. FEET)

Coord. Quality (+/-)

NORTHING (Y): 173828.348

0.05

EASTING (X): 667571.196

0.05

METHOD USED TO COMPUTE COORDINATES (check and complete as applicable):

RTK Observations Static Baselines OPUS Solution (attach copy of OPUS report)

Combination of conventional procedures with GPS observations to set temporary control

Was a Least Squares Adjustment Used to Compute Coordinate? No

For Non-OPUS Based Solutions, List the Control Stations Used for Coordinate Computations (a minimum of 2 different control stations or 2 different time combinations from the same control station are required):

Obs. #	Control Station Name	Station Coordinates (Lat/Long)	Date	Time
1	Jefferson C GPS	43 36 18.64388 / 090 56 57.50984		
1	Harmony E GPS	43 33 31.06675 / 091 02 35.79541		
1	Eosfea GPS	43 36 46.81303 / 091 02 10.18990		

* Please List Additional Control Stations Used on Back of Form

When a direct observation of the corner is not possible, and a combination of different GPS and/or conventional procedures must be used to determine coordinate values, provide a brief description of your procedures on the back of form.

(C) REASON FOR COORDINATE SUBMITTAL (check one):

Being Filed With a New U.S. PLS Monument Record

To Correct the Coordinates Listed on a Previously Filed PLS Monument Record

To Provide Coordinates for a Previously Filed PLS Monument Record without Coordinates

To Provide Supplemental Coordinates for a Previously Filed PLS Monument Record

R.L.S. & DATE OF PLS MONUMENT RECORD: William R. Bulawa S-2167 4-15-09

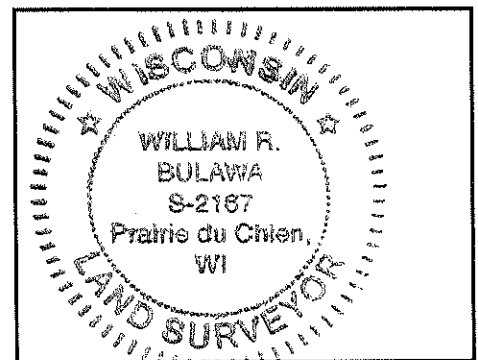
(D) AGENT(S) PERFORMING GPS OBSERVATIONS & COORDINATE COMPUTATION

1) William R. Bulawa RLS S-2167

2) James C. Schroeder RLS S-1607

I, William R. Bulawa CERTIFY THAT THE COORDINATES PROVIDED ON THIS RECORD WERE DETERMINED BY ME OR UNDER MY DIRECTION AND CONTROL AND THAT THIS COORDINATE SUBMISSION FORM IS CORRECT AND COMPLETE TO THE BEST OF MY KNOWLEDGE AND BELIEF.

Seal



William R. Bulawa
SIGNATURE

5-13-2009
DATE

Sheet 4 of 5

* Please Provide Any Additional Notes/Information on Back of Form

Date of last revision: 12/1/2008

Approved by LIC: 12/1/2008

VERNON COUNTY COORDINATE FORM

"As An Addendum To"

A CERTIFIED U.S. PUBLIC LAND SURVEY MONUMENT RECORD

Set 2 GPS control points 400' east of the corners location in an open field 650' apart from each other. I then ran traverse to the corner with my Geometer to set the ties and corner from one of the control point.