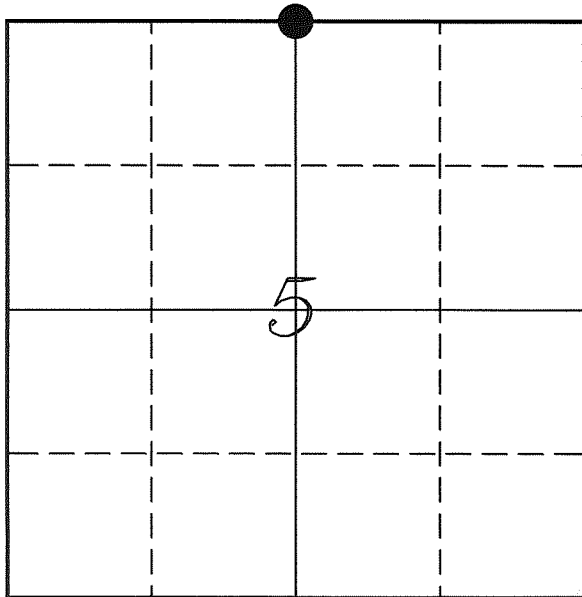

U. S. PUBLIC LAND SURVEY MONUMENT RECORD

SECTION 5, T13N, R5W, TOWN OF JEFFERSON VERNON COUNTY, WISCONSIN



LOCATION OF LANDMARK

Crew: Laurence E Johns III
Larry Handschy

Date: 14 May 2010

VERNON COUNTY COORDINATE SYSTEM	
Northing	178788.860
Easting	672829.923
Datum	NAD 1983 (2007)
Elevation	
Datum	
TYPE OF LANDMARK:	
Set Lunde Monument	
BEARINGS ARE REFERENCED TO:	
Vernon County Coordinates	

Describe any record evidence, monument evidence, testimonial evidence or any other material evidence you considered and whether the monument was found or restored through acceptance of an obliterated evidence location.

Chapter 5, Section 35 of the Manual of Surveying Instructions along with Chapter 10, Principle 18 of "Brown's Boundary Control and Legal Principles", 6th edition, states that a N 1/4 Corner of a closing sections should be set at the mid-point between the NE & NW Corners of the closing section. And by definition is not dependent on the location of the S 1/4 Corner of the Section to the North.

Prior common practice has been to determine a mean offset distance and set the quarter-corner accordingly. That practice by rule is incorrect.

I have followed the rule stated in the Manual and Brown's Principles in-determining the location of this corner.

This resulted in an offset distance from the S 1/4 Corner of 32 of 9.99 feet East.

Land owner states that he took out the fence along the town line several years ago to plant crops.

Set the Lunde Monument at the offset distance of 9.99 feet East, down 12" in the field. Land owner states that this will be deep enough for anything he will use in the field.

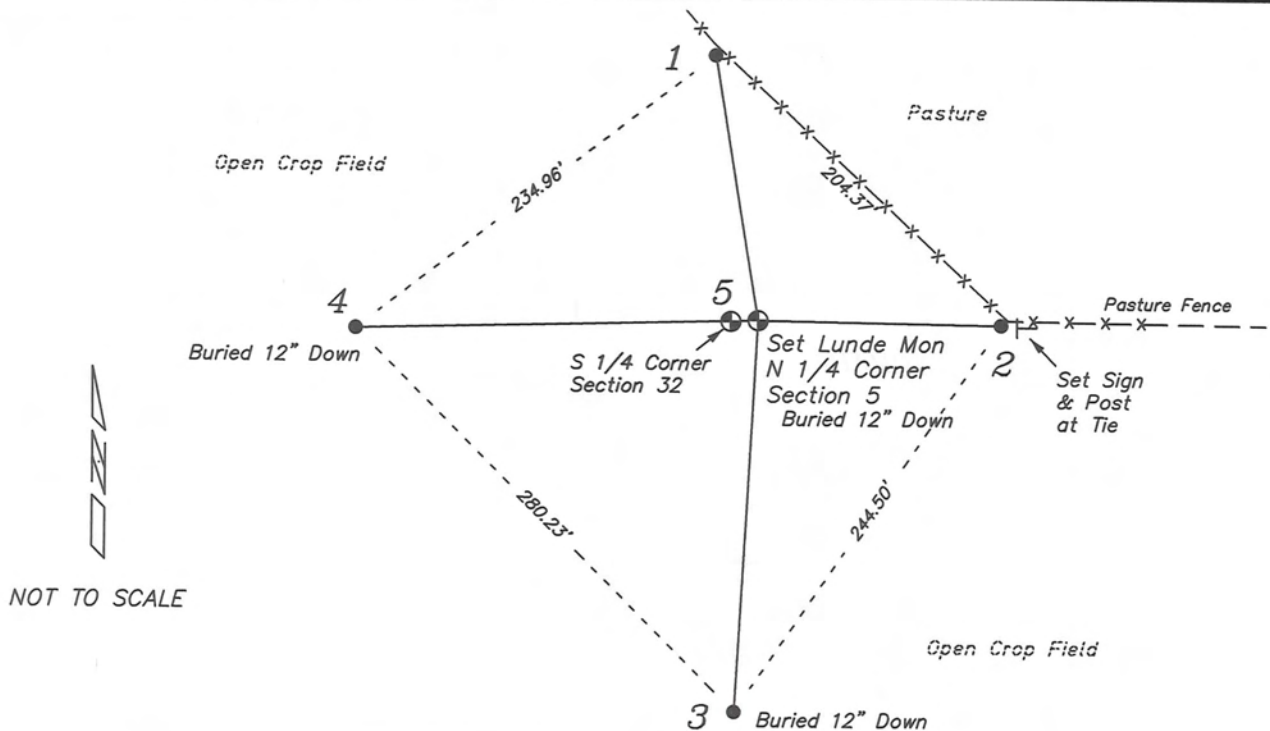
Describe or show any material discrepancy between the location of the restored corner and that of the corner previously restored or re-established.

This corner was not established during the original government survey.

No survey was found that used this corner.

RECORD OF DURABLE WITNESS MONUMENTS

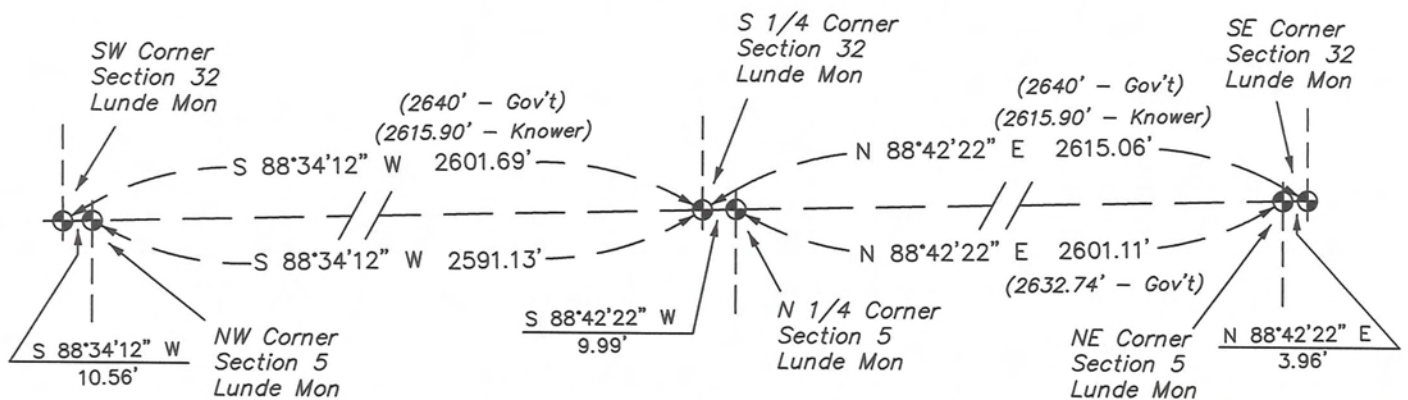
NO	DESCRIPTION	BEARING	DISTANCE
1	Set 3/4" x 18" Iron Rod At Pasture Fence	N 12°05'56" W	140.89'
2	Set 3/4" x 18" Iron Rod At Pasture Fence	S 89°06'42" E	119.72'
3	Set 3/4" x 18" Iron Rod	S 05°03'27" W	204.66'
4	Set 3/4" x 18" Iron Rod	S 88°34'26" W	215.92'
5	Lunde Monument S 1/4 Corner - Section 32	S 88°42'22" W	9.99'



PLAN VIEW DRAWING OF REFERENCE TIES

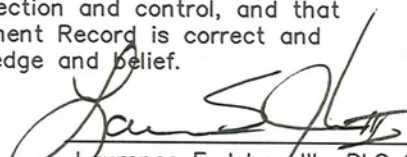
Map Showing Distance And Direction To Other Public Land Survey
Corners Used For Re-Establishing The Corner

T 14 N - R 5 W



T 13 N - R 5 W

I, Laurence E Johns III RLS 2804, Registered Land Surveyor, hereby certify that the corner location shown on this record was determined by me or under my direction and control, and that this U.S. Public Land Survey Monument Record is correct and complete to the best of my knowledge and belief.


 Laurence E Johns III RLS 2804
 Eagle Ridge Surveying, LLC
 PO Box 213
 Wilton, Wisconsin
 26 April 2010
 Revised
 23 May 2010

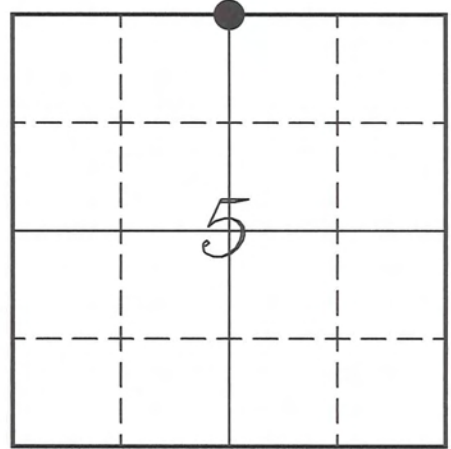


VERNON COUNTY COORDINATE SUBMISSION FORM
"As An Addendum To"
VERNON COUNTY
CERTIFIED U.S. PUBLIC LAND SURVEY MONUMENT RECORD

INSTRUCTIONS: THIS RECORD FORM SHOULD BE USED WHEN COORDINATES ARE PROVIDED FOR A PUBLIC LAND SURVEY CORNER AND SHALL INCLUDE ALL OF THE FOLLOWING ELEMENTS (A-D)

(A) IDENTIFY THE CORNER BY REFERENCE TO THE U.S. PUBLIC LAND SURVEY SYSTEM IN DIAGRAM AT RIGHT

● = CORNER MONUMENT



(B) COORDINATES:

GEOGRAPHIC (Degrees Minutes Seconds)

LATITUDE: 43° 38' 14.9870" N

LONGITUDE: 90° 59' 57.3815" W

ELLIPSOID HT (m): _____

DATUM: NAD 1983 (2007)

GEOID03 ADJ: -32.359

ORTHOMETRIC HT: _____

VERNON COUNTY (U.S. FEET)

Coord Quality (+/-)

NORTHING (Y): 178788.860 _____

EASTING (X): 672829.923 _____

GPS METHOD USED TO COMPUTE COORDINATES (check as applicable)

- RTK Observations Static Baselines OPUS-RS Solution OPUS-S Solution
 Combination of GPS Observations & Conventional Procedures

Was a Least Squares Adjustment Used to Compute Coordinates? Yes / No

BASE CONTROL USED FOR COORDINATE COMPUTATION

Station Name	Station Coordinates	Date/Time
<u>OPUS Control - CN32</u>	<u>43° 38' 27.6640" N 90° 59' 58.3490" W</u>	<u>04/26/2010 - 11:54</u>
	<u>N - 180072.708 E - 672762.114</u>	
<u>Same</u>		<u>05/23/2010 - 10:06</u>

(C) REASON FOR COORDINATES SUBMITTAL (check one)

- Being Filed With a New U.S. PLS Monument Record
 To Correct the Coordinates Listed on a Previously Filed PLS Monument Record
 To Provide Coordinates for Previously Filed PLS Monument Record without Coordinates
 To Provide Supplemental Coordinates for a Previously Filed PLS Monument Record

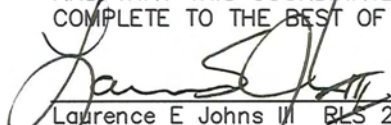
MOST RECENT PLS MONUMENT RECORD DATE:

R.L.S. WHO CREATED MOST RECENT PLS MONUMENT RECORD:

(D) AGENT(S) PERFORMING GPS OBSERVATIONS & COORDINATE COMPUTATION

1) LAURENCE E JOHNS III

I, LAURENCE E JOHNS III RLS 2804, REGISTERED LAND SURVEYOR, HEREBY CERTIFY THAT THE COORDINATES PROVIDED ON THIS RECORD WERE DETERMINED BY ME OR UNDER MY DIRECTION AND CONTROL AND THAT THIS COORDINATE SUBMISSION FORM IS CORRECT AND COMPLETE TO THE BEST OF MY KNOWLEDGE AND BELIEF.


 Laurence E Johns III RLS 2804
 Eagle Ridge Surveying, LLC
 PO Box 213
 Wilton, Wisconsin
 29 April 2010
 Wilton, Wisconsin
 23 May 2010

