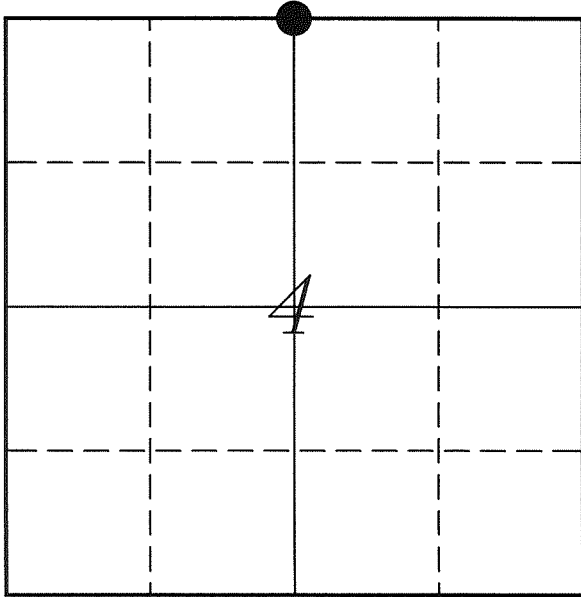


---

# U. S. PUBLIC LAND SURVEY MONUMENT RECORD

---

## SECTION 4, T13N, R5W, TOWN OF JEFFERSON VERNON COUNTY, WISCONSIN



LOCATION OF LANDMARK

Crew: Laurence E Johns III  
Larry Handschy

Date: 3 May 2010

VERNON COUNTY COORDINATE SYSTEM	
Northing	178906.757
Easting	678071.260
Datum	NAD 1983 (2007)
Elevation	
Datum	
TYPE OF LANDMARK:	
Set Lunde Monument	
BEARINGS ARE REFERENCED TO:	
Vernon County Coordinates	

---

*Describe any record evidence, monument evidence, testimonial evidence or any other material evidence you considered and whether the monument was found or restored through acceptance of an obliterated evidence location.*

I found a 3/4" Iron Rod that seems to match occupation for the S 1/4 Corner of Section 33. Distances to the North and West matches Crook's survey in Section 33 very well.

Did not find another 3/4" Iron Rod in the vicinity for the N 1/4 Corner of Section 4.

I believe that Crook had used the same 3/4" iron rod for both the N 1/4 Corner of Section 4 and the S 1/4 Corner of Section 33.

This location is 2.78 feet East of the pro-rated location. There is no apparent good occupation in this area for Section 4.

Since this location has been used for this corner in previous surveys, I accepted it as the best possible location for this corner.

This corner is also the same corner as the S 1/4 Corner of Section 33.

---

*Describe or show any material discrepancy between the location of the restored corner and that of the corner previously restored or re-established.*

This corner was not set during the original government survey.

Wm Knower was at the N 1/4 Corner of Section 4, in June 1885, during a survey in Section 4. He does not state if he set a new corner for Section 4 or used the one set for Section 33.

C M Sterling was at this corner, in September 1892, during a survey in Section 33. He shows that Knower had renewed this corner.

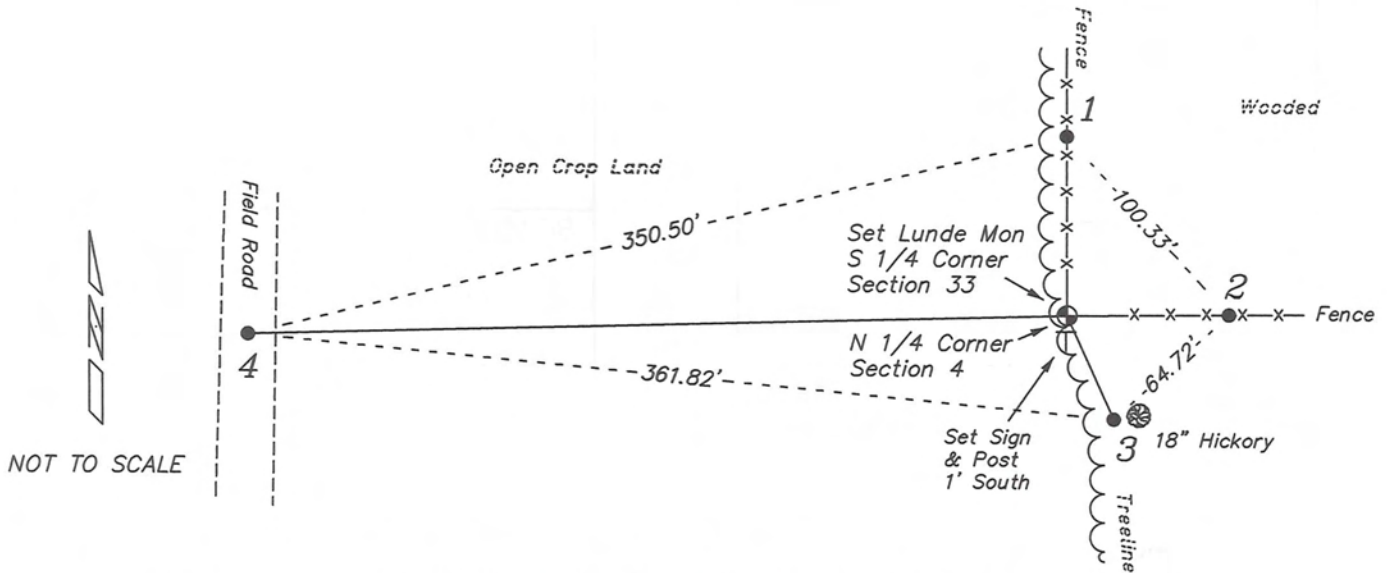
F Curtis Crook was at the N 1/4 Corner of Section 4, in March 1993, during a survey in Section 4. He set a 3/4" Iron Rod.

F Curtis Crook was at this corner, in September 1995, during a survey in Section 33. He does not mention what the monument is at the corner.

F Curtis Crook was at this corner, in April 2000, and found a 3/4" Iron Rod. Does not state that if this is the same 3/4" Iron Rod as the one set at the N 1/4 Corner of Section 4.

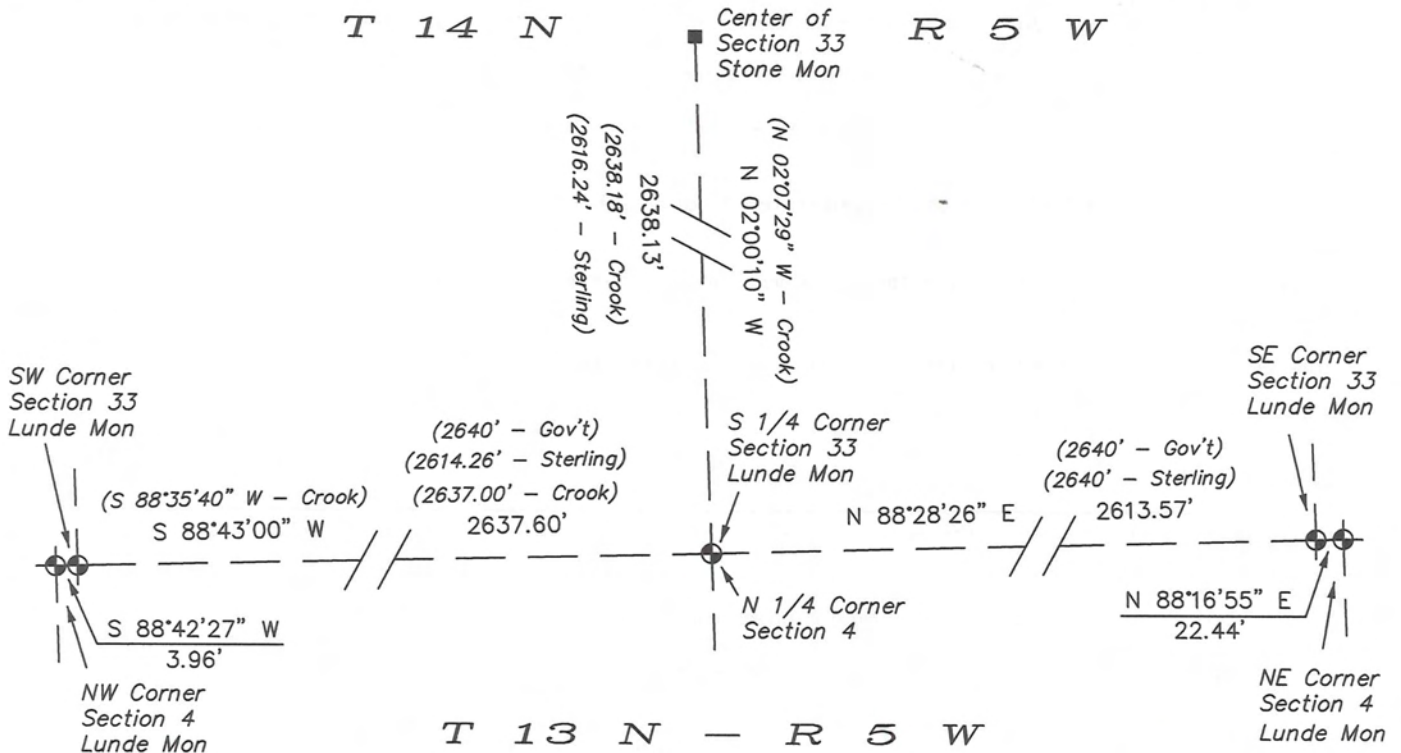
# RECORD OF DURABLE WITNESS MONUMENTS

NO	DESCRIPTION	BEARING	DISTANCE
1	Set 3/4" x 18" Iron Rod In Fence Line	N 00°18'19" W	74.55'
2	Set 3/4" x 18" Iron Rod In Fence Line	N 89°34'13" E	67.31'
3	Set 3/4" x 18" Iron Rod West Side of 18" Hickory	S 24°17'36" E	47.21'
4	Set 3/4" x 18" Iron Rod	S 88°29'10" W	340.91'

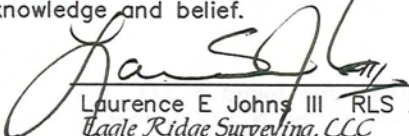


## PLAN VIEW DRAWING OF REFERENCE TIES

Map Showing Distance And Direction To Other Public Land Survey  
Corners Used For Re-Establishing The Corner



I, Laurence E Johns III RLS 2804, Registered Land Surveyor, hereby certify that the corner location shown on this record was determined by me or under my direction and control, and that this U.S. Public Land Survey Monument Record is correct and complete to the best of my knowledge and belief.

  
 Laurence E Johns III RLS 2804  
 Eagle Ridge Surveying, LLC  
 PO Box 213  
 Wilton, Wisconsin  
 3 May 2010  
 Revised  
 17 May 2010

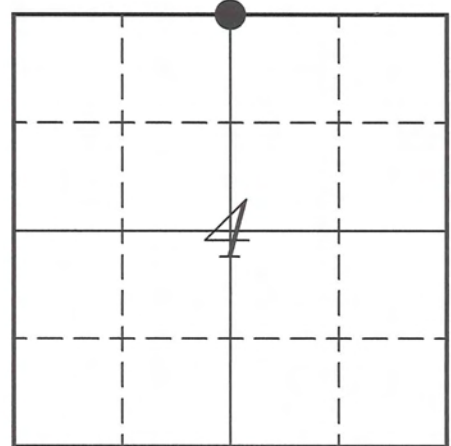


**VERNON COUNTY COORDINATE SUBMISSION FORM**  
**"As An Addendum To"**  
**VERNON COUNTY**  
**CERTIFIED U.S. PUBLIC LAND SURVEY MONUMENT RECORD**

INSTRUCTIONS: THIS RECORD FORM SHOULD BE USED WHEN COORDINATES ARE PROVIDED FOR A PUBLIC LAND SURVEY CORNER AND SHALL INCLUDE ALL OF THE FOLLOWING ELEMENTS (A-D)

(A) IDENTIFY THE CORNER BY REFERENCE TO THE U.S. PUBLIC LAND SURVEY SYSTEM IN DIAGRAM AT RIGHT

● = CORNER MONUMENT



T 13 N, R 5 W

(B) COORDINATES:

GEOGRAPHIC (Degrees Minutes Seconds)

LATITUDE: 43° 38' 16.2796" N

LONGITUDE: 90° 58' 46.1155" W

ELLIPSOID HT (m): \_\_\_\_\_

DATUM: NAD 1983 (2007)

GEOID03 ADJ: -32.438

ORTHOMETRIC HT: \_\_\_\_\_

VERNON COUNTY (U.S. FEET)

Coord Quality (+/-)

NORTHING (Y): 178906.757 \_\_\_\_\_

EASTING (X): 678071.260 \_\_\_\_\_

GPS METHOD USED TO COMPUTE COORDINATES (check as applicable)

RTK Observations     Static Baselines     OPUS-RS Solution     OPUS-S Solution  
 Combination of GPS Observations & Conventional Procedures

Was a Least Squares Adjustment Used to Compute Coordinates? Yes /  No

BASE CONTROL USED FOR COORDINATE COMPUTATION

Station Name	Station Coordinates	Date/Time
<u>OPUS Control - CN33</u>	<u>43° 38' 30.6615" N 90° 58' 46.6569" W</u> <u>N - 180363.144 E - 678034.882</u>	<u>04/20/2010 - 12:19</u>
<u>Same</u>	_____	<u>04/26/2010 - 16:20</u>

(C) REASON FOR COORDINATES SUBMITTAL (check one)

Being Filed With a New U.S. PLS Monument Record  
 To Correct the Coordinates Listed on a Previously Filed PLS Monument Record  
 To Provide Coordinates for Previously Filed PLS Monument Record without Coordinates  
 To Provide Supplemental Coordinates for a Previously Filed PLS Monument Record

MOST RECENT PLS MONUMENT RECORD DATE:

R.L.S. WHO CREATED MOST RECENT PLS MONUMENT RECORD:

(D) AGENT(S) PERFORMING GPS OBSERVATIONS & COORDINATE COMPUTATION

- 1) LAURENCE E JOHNS III
- 2) \_\_\_\_\_

I, LAURENCE E JOHNS III RLS 2804, REGISTERED LAND SURVEYOR, HEREBY CERTIFY THAT THE COORDINATES PROVIDED ON THIS RECORD WERE DETERMINED BY ME OR UNDER MY DIRECTION AND CONTROL AND THAT THIS COORDINATE SUBMISSION FORM IS CORRECT AND COMPLETE TO THE BEST OF MY KNOWLEDGE AND BELIEF.



Laurence E Johns III RLS 2804  
 Eagle Ridge Surveying, LLC  
 PO Box 213  
 Wilton, Wisconsin  
 26 April 2010