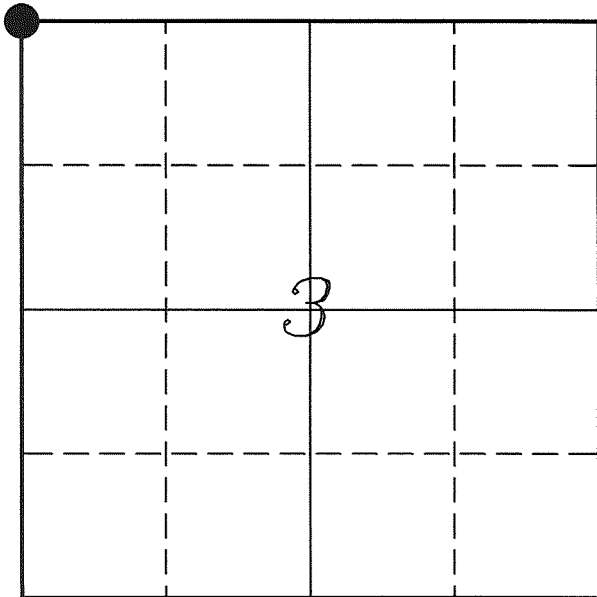

U. S. PUBLIC LAND SURVEY MONUMENT RECORD

SECTION 3, T13N, R5W, TOWN OF JEFFERSON VERNON COUNTY, WISCONSIN



LOCATION OF LANDMARK

Crew: Laurence E Johns III
Larry Handschy

Date: 3 May 2010

<i>VERNON COUNTY COORDINATE SYSTEM</i>	
<i>Northing</i>	<i>178977.036</i>
<i>Easting</i>	<i>680706.337</i>
<i>Datum</i>	<i>NAD 1983 (2007)</i>
<i>Elevation</i>	
<i>Datum</i>	
<i>TYPE OF LANDMARK:</i>	
<i>Set Lunde Monument</i>	
<i>BEARINGS ARE REFERENCED TO:</i>	
<i>Vernon County Coordinates</i>	

Describe any record evidence, monument evidence, testimonial evidence or any other material evidence you considered and whether the monument was found or restored through acceptance of an obliterated evidence location.

Did not located bearing trees from the original survey. Found only one of Jung's bearing trees, the 10" Black Oak (now 16").

Found the 1 1/4" Hex Iron Bar set by Jung.

The fences shows on Jung's map are no longer present, but he does mention using occupation and the government offset distance from the SW Corner of Section 34 for determining his corner.

Since the Iron Bar was set at occupation and that location matches the government distance to the SW Corner of Section 34. I accepted it as the best available evidence of the original government corner and replaced it with a Lunde Monument.

Describe or show any material discrepancy between the location of the restored corner and that of the corner previously restored or re-established.

Samuel Dixon established this corner in July 1845.

Wm Knower was at this corner, in June 1885, during a survey in Section 4. He shows that the corner was re-established by a former survey.

Wm Knower was at this corner again, in November 1885, during a survey in Section 3. He again shows that the corner was re-established by a former survey.

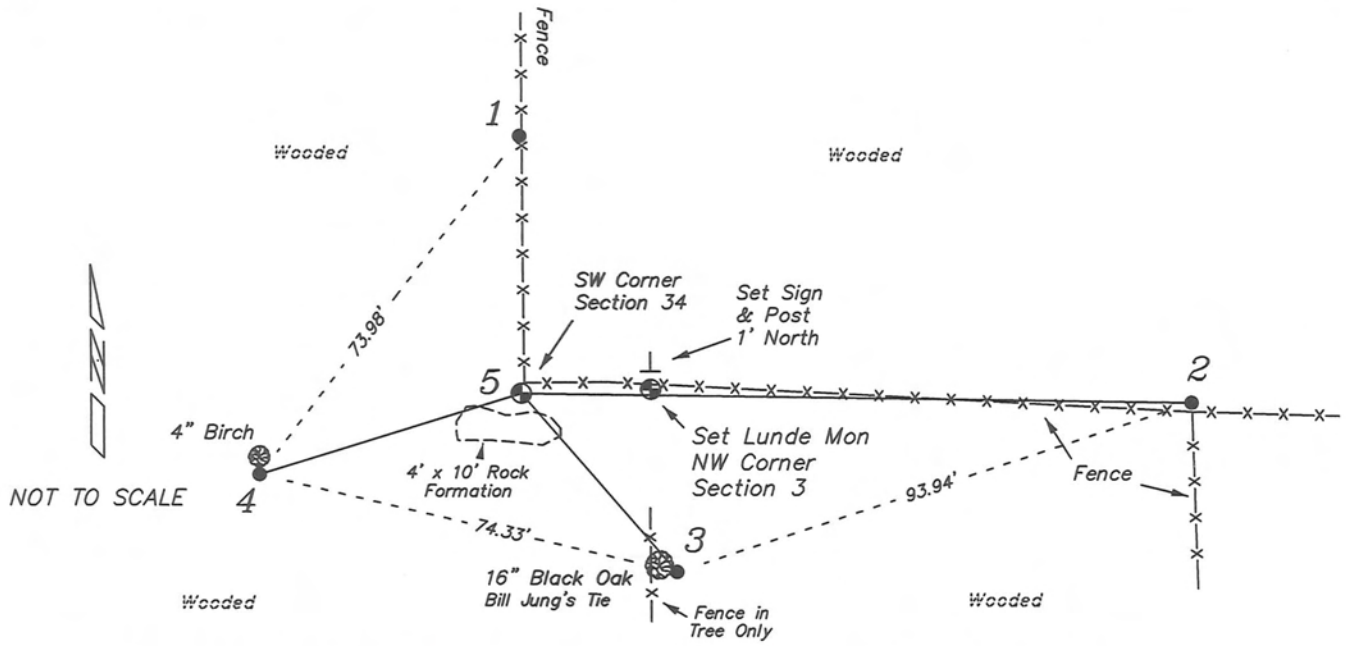
Bill Jung was at this corner, in October 1979, during a survey in Section 3. He sets a 1 1/4" Hex Iron Bar at this corner and prepares a tie sheet for it.

Bryan Meyer was at the SW Corner of Section 34, in April 1987, during a survey in Section 33. He mentions that he finds Jung's Iron Bar and shows it on a tie sheet prepared for the SW Corner.

F Curtis Crook was at this corner, in March 1993, during a survey in Section 4. He finds Jung's corner.

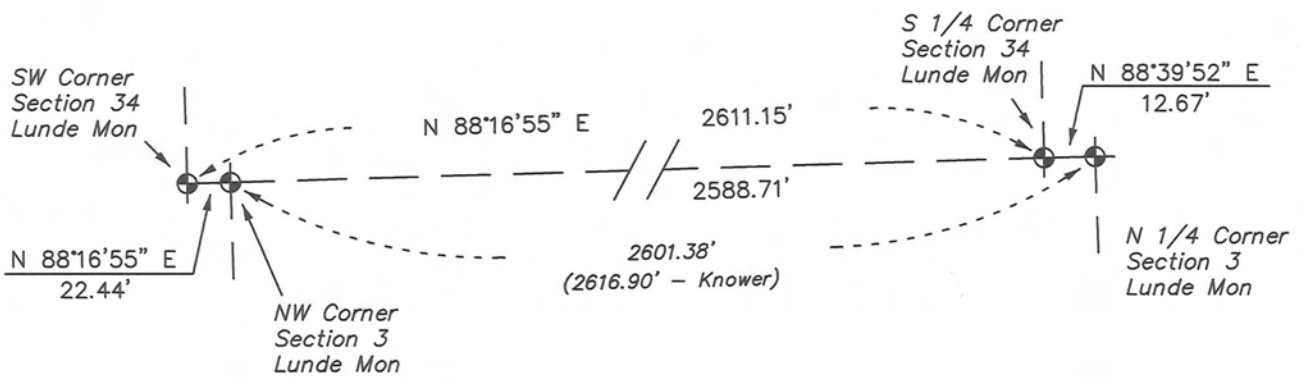
RECORD OF DURABLE WITNESS MONUMENTS

NO	DESCRIPTION	BEARING	DISTANCE
1	Set 3/4" x 18" Iron Rod In Fence Line	N 27°16'31" W	49.37'
2	Set 3/4" x 18" Iron Rod North Side of 3-way Fence Corner	S 88°33'58" E	93.84'
3	Set 3/4" x 18" Iron Rod Southeast Side of 16" Black Oak	S 08°12'10" E	32.00'
4	Set 3/4" x 18" Iron Rod South Side of a 4" Birch	S 77°46'05" W	69.38'
5	Lunde Monument SW Corner - Section 34	S 88°16'55" W	22.44'

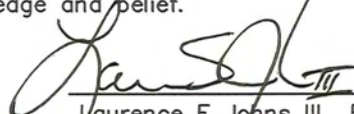


PLAN VIEW DRAWING OF REFERENCE TIES

Map Showing Distance And Direction To Other Public Land Survey
Corners Used For Re-Establishing The Corner



I, Laurence E Johns III RLS 2804, Registered Land Surveyor, hereby certify that the corner location shown on this record was determined by me or under my direction and control, and that this U.S. Public Land Survey Monument Record is correct and complete to the best of my knowledge and belief.

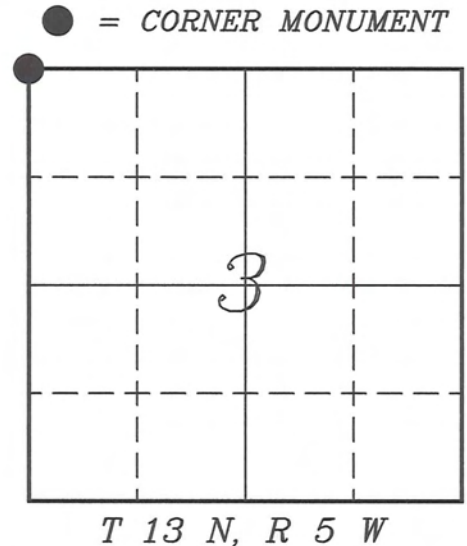

 Laurence E Johns III RLS 2804
 Eagle Ridge Surveying, LLC
 PO Box 213
 Wilton, Wisconsin
 3 May 2010



VERNON COUNTY COORDINATE SUBMISSION FORM
 "As An Addendum To"
VERNON COUNTY
CERTIFIED U.S. PUBLIC LAND SURVEY MONUMENT RECORD

INSTRUCTIONS: THIS RECORD FORM SHOULD BE USED WHEN COORDINATES ARE PROVIDED FOR A PUBLIC LAND SURVEY CORNER AND SHALL INCLUDE ALL OF THE FOLLOWING ELEMENTS (A-D)

(A) IDENTIFY THE CORNER BY REFERENCE TO THE U.S. PUBLIC LAND SURVEY SYSTEM IN DIAGRAM AT RIGHT



(B) COORDINATES:

GEOGRAPHIC (Degrees Minutes Seconds)
 LATITUDE: 43° 38' 17.0335" N
 LONGITUDE: 90° 58' 10.2865" W
 ELLIPSOID HT (m): _____
 DATUM: NAD 1983 (2007)
 GEOID03 ADJ: -32.478
 OTHROMETRIC HT: _____

VERNON COUNTY (U.S. FEET) Coord Quality (+/-)
 NORTHING (Y): 178977.036 _____
 EASTING (X): 680706.337 _____

GPS METHOD USED TO COMPUTE COORDINATES (check as applicable)

- RTK Observations Static Baselines OPUS-RS Solution OPUS-S Solution
 Combination of GPS Observations & Conventional Procedures

Was a Least Squares Adjustment Used to Compute Coordinates? Yes / No

BASE CONTROL USED FOR COORDINATE COMPUTATION

Station Name	Station Coordinates	Date/Time
<u>OPUS Control - CN34</u>	<u>43° 38' 51.5548" N 90° 57' 40.3727" W</u> <u>N - 182467.812 E - 682913.711</u>	<u>05/03/2010 - 11:03</u>
<u>Same</u>	_____	<u>05/06/2010 - 14:15</u>

(C) REASON FOR COORDINATES SUBMITTAL (check one)

- Being Filed With a New U.S. PLS Monument Record
 To Correct the Coordinates Listed on a Previously Filed PLS Monument Record
 To Provide Coordinates for Previously Filed PLS Monument Record without Coordinates
 To Provide Supplemental Coordinates for a Previously Filed PLS Monument Record

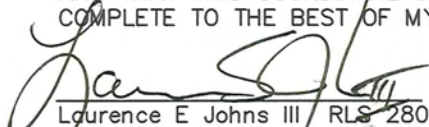
MOST RECENT PLS MONUMENT RECORD DATE:

R.L.S. WHO CREATED MOST RECENT PLS MONUMENT RECORD:

(D) AGENT(S) PERFORMING GPS OBSERVATIONS & COORDINATE COMPUTATION

- 1) LAURENCE E JOHNS III
 2) _____

I, LAURENCE E JOHNS III RLS 2804, REGISTERED LAND SURVEYOR, HEREBY CERTIFY THAT THE COORDINATES PROVIDED ON THIS RECORD WERE DETERMINED BY ME OR UNDER MY DIRECTION AND CONTROL AND THAT THIS COORDINATE SUBMISSION FORM IS CORRECT AND COMPLETE TO THE BEST OF MY KNOWLEDGE AND BELIEF.


 Laurence E Johns III RLS 2804
 Eagle Ridge Surveying, LLC
 PO Box 213
 Wilton, Wisconsin
 6 May 2010



CERTIFICATE

CERTIFIED LAND CORNER

No. _____

I, William C. Jung, do hereby certify that on the 4th day of October 1979, I found (evidence) ~~(no evidence)~~ of the N.W. corner of Section 3, T 13 N, R 5 W Fourth Principal Meridian, and I re-established said corner according to the Wisconsin Statutes as shown and described hereon.

Dated this 15th day of Oct. 1979.

William C. Jung
Registered Land Surveyor

History of corner establishment since Original Government Survey

W.H. Knower was at this corner in 1883 and 1886 and may have set a stone.

Description of corner evidence found:

There were stones in the area of the section corner that could possibly have been a marker. However, with all the field stones lying about, it is really impossible to tell with a certainty since all the witness trees are gone. Accepted and monumented the existing occupied fence corner as the best possible evidence of the original government corner. This corner location is supported by section measurements. Note that this is only the section corner for Sections 3 and 4. The section corner for Sections 33 and 34 is 22.44 feet to the West. The original surveyors erroneously established closing corners on this Town Line. Knower perpetuated these corners the same way.

Description of corner and witness monuments, references and accessories used to perpetuate the original or re-established location of this corner:

Set a 1 1/4"x30" iron bar at the N.W. Corner of Section 3.

Witnesses to corner location:

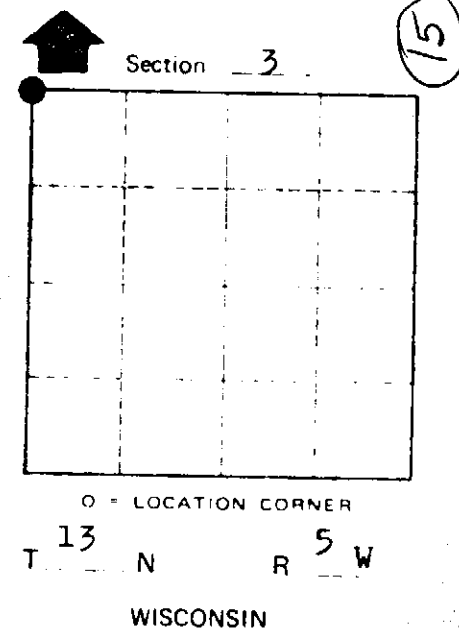
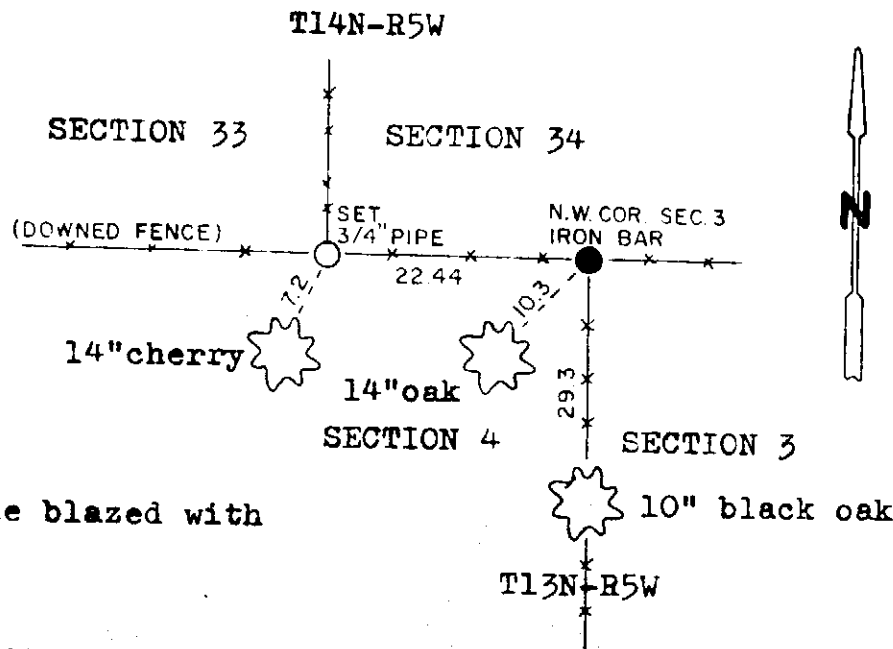
William Jung

Gary Dechant

Todd Tormoen



(All trees are single blazed with a N&C set in each.)



COUNTY SURVEYOR FORM NO. 1

SURVEY CONTROL ORDER

Horizontal	_____
Vertical	_____

WISCONSIN COORDINATE SYSTEM

Corner	East (X)	North (Y)	Elevation (Z)	Zone
Control Sta. Name				

City, Village or Town Jefferson
County of Vernon