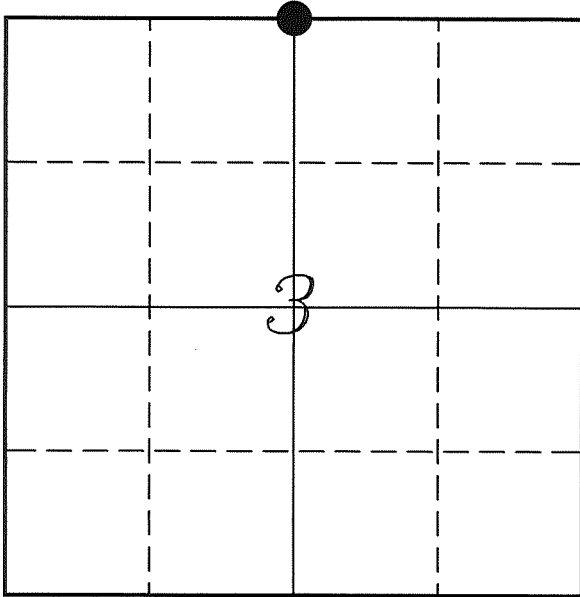

U. S. PUBLIC LAND SURVEY MONUMENT RECORD

SECTION 3, T13N, R5W, TOWN OF JEFFERSON VERNON COUNTY, WISCONSIN



LOCATION OF LANDMARK

Crew: Laurence E Johns III
Larry Handschy

Date: 20 April 2010

VERNON COUNTY COORDINATE SYSTEM	
Northing	179054.940
Easting	683306.555
Datum	NAD 1983 (2007)
Elevation	
Datum	
TYPE OF LANDMARK:	
Set Lunde Monument	
BEARINGS ARE REFERENCED TO:	
Vernon County Coordinates	

Describe any record evidence, monument evidence, testimonial evidence or any other material evidence you considered and whether the monument was found or restored through acceptance of an obliterated evidence location.

No bearing trees were noted in the previous survey at this corner.

Knower's survey of 1885, shows an equal distance between the NE & NW Corners.

No occupational evidence was noted at this corner.

Since Knower had measured this corner at the mid-point between the NE & NW Corners of the Section and since there is no occupational evidence to dispute it. Therefore, I determined this corner to be at the mid-point and placed a Lunde Monument.

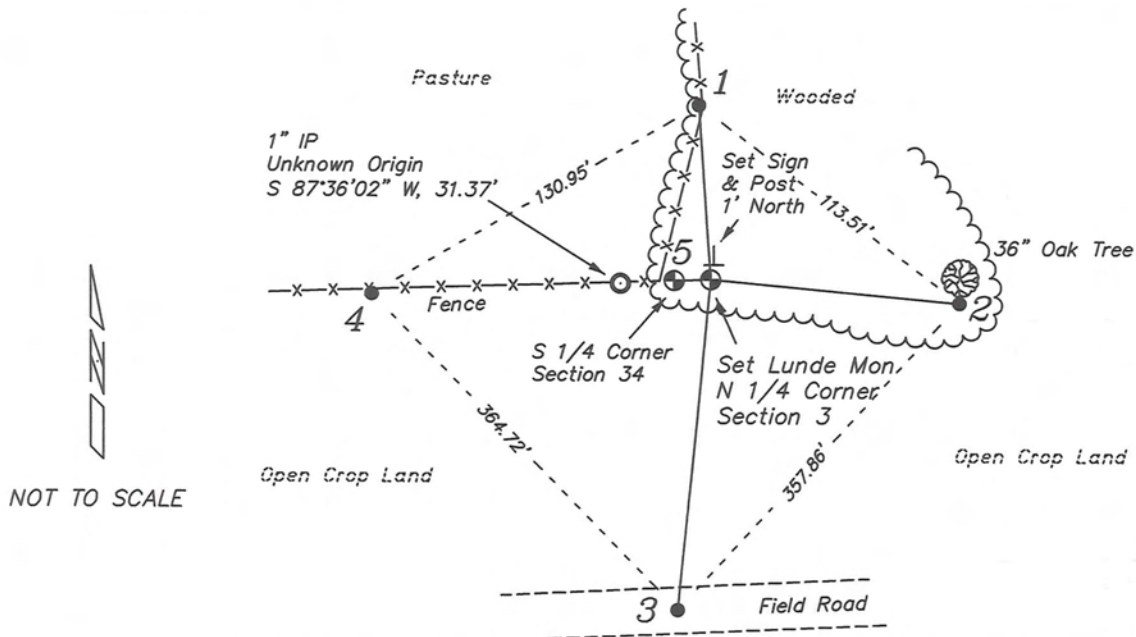
Describe or show any material discrepancy between the location of the restored corner and that of the corner previously restored or re-established.

This corner was not established during the original government survey.

Wm Knower was at this corner, in November 1885, during a survey in Section 3. He shows the North line being established in a former survey. I have not found that survey.

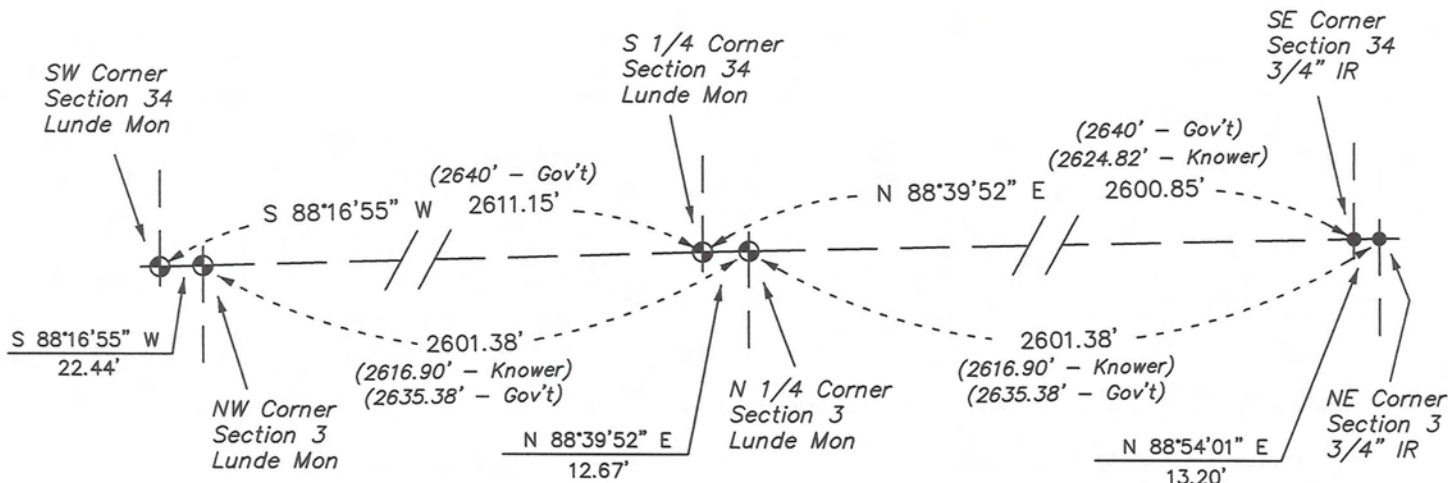
RECORD OF DURABLE WITNESS MONUMENTS

NO	DESCRIPTION	BEARING	DISTANCE
1	Set 3/4" x 18" Iron Rod In Fence Line	N 03°59'38" W	60.66'
2	Set 3/4" x 18" Iron Rod South Side of 36" Oak Tree	S 84°41'59" E	86.64'
3	Set 3/4" x 18" Iron Rod Center of Field Road	S 01°22'10" W	353.21'
4	Set 3/4" x 18" Iron Rod In Fence Line	S 87°31'17" W	117.67'
5	Lunde Monument S 1/4 Corner - Section 34	S 88°39'52" W	12.67'

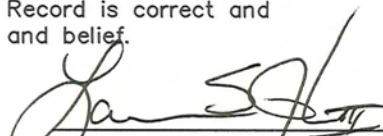


PLAN VIEW DRAWING OF REFERENCE TIES

Map Showing Distance And Direction To Other Public Land Survey
Corners Used For Re-Establishing The Corner



I, Laurence E Johns III RLS 2804, Registered Land Surveyor, hereby certify that the corner location shown on this record was determined by me or under my direction and control, and that this U.S. Public Land Survey Monument Record is correct and complete to the best of my knowledge and belief.


 Laurence E Johns III RLS 2804
 Eagle Ridge Surveying, CCC
 PO Box 213
 Wilton, Wisconsin
 20 April 2010

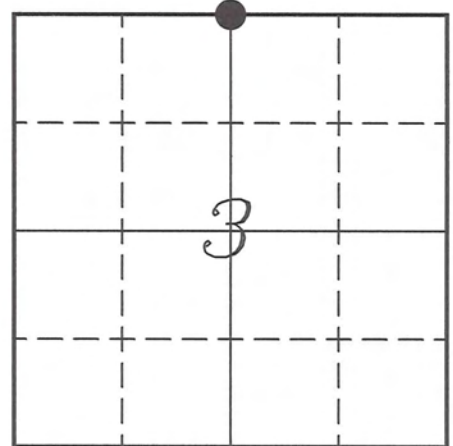


VERNON COUNTY COORDINATE SUBMISSION FORM
 "As An Addendum To"
VERNON COUNTY
CERTIFIED U.S. PUBLIC LAND SURVEY MONUMENT RECORD

INSTRUCTIONS: THIS RECORD FORM SHOULD BE USED WHEN COORDINATES ARE PROVIDED FOR A PUBLIC LAND SURVEY CORNER AND SHALL INCLUDE ALL OF THE FOLLOWING ELEMENTS (A-D)

(A) IDENTIFY THE CORNER BY REFERENCE TO THE U.S. PUBLIC LAND SURVEY SYSTEM IN DIAGRAM AT RIGHT

● = CORNER MONUMENT



(B) COORDINATES:

GEOGRAPHIC (Degrees Minutes Seconds)
 LATITUDE: 43° 38' 17.8589" N
 LONGITUDE: 90° 57' 34.9316" W
 ELLIPSOID HT (m): _____
 DATUM: NAD 1983 (2007)
 GEOID03 ADJ: -32.518
 OTHROMETRIC HT: _____

VERNON COUNTY (U.S. FEET) Coord Quality (+/-)
 NORTHING (Y): 179054.940 _____
 EASTING (X): 683306.555 _____

GPS METHOD USED TO COMPUTE COORDINATES (check as applicable)

RTK Observations Static Baselines OPUS-RS Solution OPUS-S Solution
 Combination of GPS Observations & Conventional Procedures

Was a Least Squares Adjustment Used to Compute Coordinates? Yes / No

BASE CONTROL USED FOR COORDINATE COMPUTATION

Station Name	Station Coordinates	Date/Time
<u>OPUS Control - CN34</u>	<u>43° 38' 51.5548" N 90° 57' 40.3727" W</u> <u>N - 182467.812 E - 682913.711</u>	<u>04/20/2010 - 16:38</u>
<u>Same</u>	_____	<u>5/23/2010 - 08:02</u>

(C) REASON FOR COORDINATES SUBMITTAL (check one)

Being Filed With a New U.S. PLS Monument Record
 To Correct the Coordinates Listed on a Previously Filed PLS Monument Record
 To Provide Coordinates for Previously Filed PLS Monument Record without Coordinates
 To Provide Supplemental Coordinates for a Previously Filed PLS Monument Record

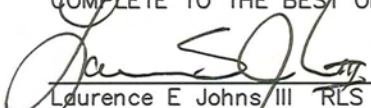
MOST RECENT PLS MONUMENT RECORD DATE:

R.L.S. WHO CREATED MOST RECENT PLS MONUMENT RECORD:

(D) AGENT(S) PERFORMING GPS OBSERVATIONS & COORDINATE COMPUTATION

1) LAURENCE E JOHNS III
 2) _____

I, LAURENCE E JOHNS III RLS 2804, REGISTERED LAND SURVEYOR, HEREBY CERTIFY THAT THE COORDINATES PROVIDED ON THIS RECORD WERE DETERMINED BY ME OR UNDER MY DIRECTION AND CONTROL AND THAT THIS COORDINATE SUBMISSION FORM IS CORRECT AND COMPLETE TO THE BEST OF MY KNOWLEDGE AND BELIEF.


 Laurence E Johns III RLS 2804
 Eagle Ridge Surveying, LLC
 PO Box 213
 Wilton, Wisconsin
 23 May 2010

