

CERTIFICATE

CERTIFIED LAND CORNER

No. _____

I, William C. Jung, do hereby certify that on the 11th day of October 1979, I found (evidence) ~~(no evidence)~~ of the CWI/16 corner of Section 3, T 13 N, R 5 W Fourth Principal Meridian, and I re-established said corner according to the Wisconsin Statutes as shown and described hereon.

Dated this 15th day of Oct. 19 79.

William C. Jung
Registered Land Surveyor

Title

History of corner establishment since Original Government Survey

W.H. Knower established this corner in 1886 and may have set a stone.

Description of corner evidence found:

Set the corner on line and equidistant between the Center 1/4 Corner and the West 1/4 Corner as called for by law in Chapter 59.62 of the Wisconsin Statutes.

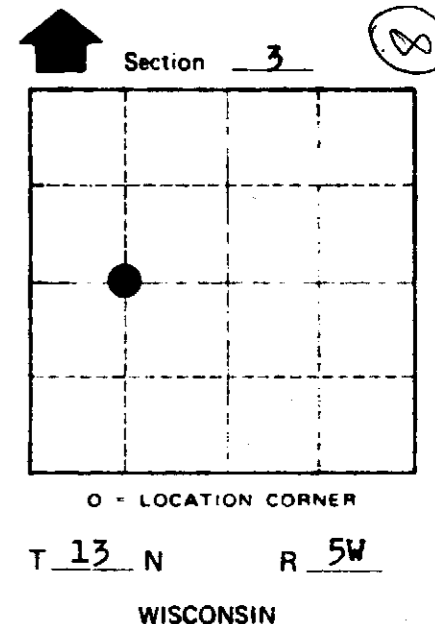
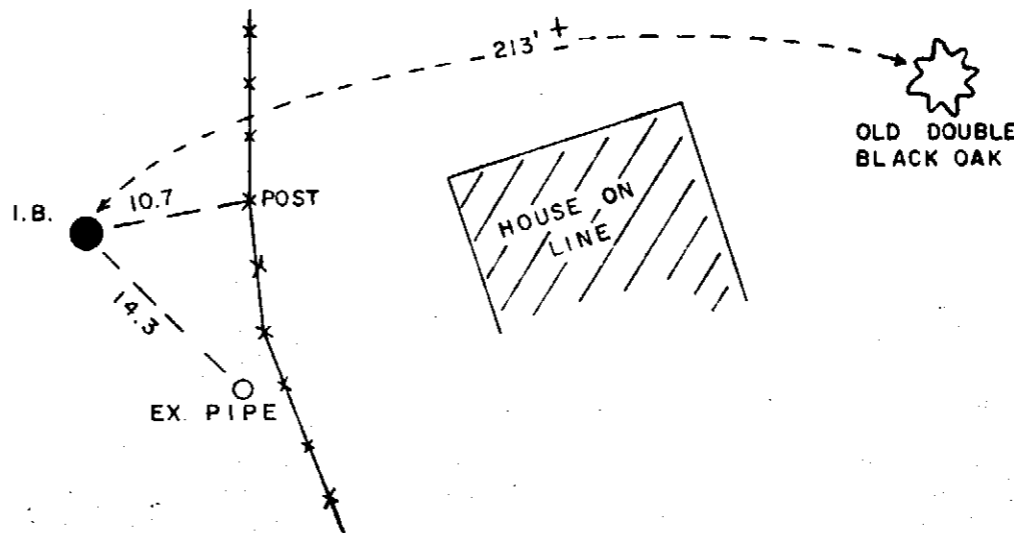
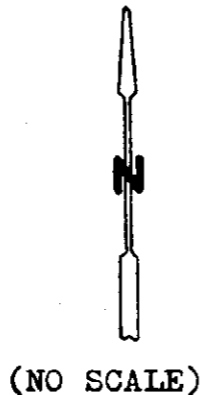
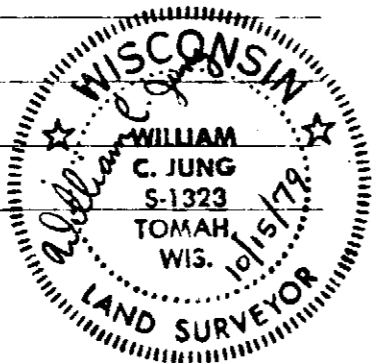
This computed location falls in an area that was disturbed when the creek bed and bank were reworked. Any old marker would have been disturbed or destroyed. Found an old oak on the sidehill to the East that appears to be Knower's old witness tree. The distance from the tree to my corner checks with Knower's distance.

Description of corner and witness monuments, references and accessories used to perpetuate the original or re-established location of this corner:

Set a 3/4"x24" hexagon iron bar on the West side of a dirt berm and East of the creek.

Witnesses to corner location:

William Jung
Gary Dechant



SURVEY CONTROL ORDER

Horizontal _____
Vertical _____

WISCONSIN COORDINATE SYSTEM

Corner	East (X)	North (Y)	Elevation (Z)	Zone
Control Sta. Name				

City, Village or Town Jefferson
County of Vernon

COUNTY SURVEYOR FORM NO. 1