

RECEIVED  
FEB 14 2007

BY: K.S.

## Vernon County Certified U.S. Public Land Survey Monument Record

INSTRUCTIONS: THIS RECORD SHALL SHOW THE LOCATION OF THE CORNER AND SHALL INCLUDE ALL OF THE FOLLOWING ELEMENTS (A-I)

(A) IDENTIFY THE CORNER BY REFERENCE TO THE U.S. PUBLIC LAND SURVEY SYSTEM

■ = CORNER MONUMENT RESTORED

WITNESSES TO CORNER LOCATION:

- 1) Chad L. Crook
- 2) Brenda A. Crook
- 3)

STATE PLANE COORDINATES (WISCONSIN SOUTH ZONE)

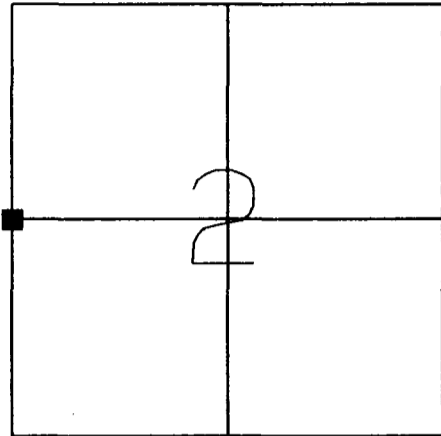
NORTHING:

EASTING:

VERNON COUNTY COORDINATES

NORTHING: 176,763.25

EASTING: 685,938.70



SECTION 2 TOWNSHIP 13 NORTH, RANGE 5 WEST  
TOWN OF JEFFERSON

(B) DESCRIBE ANY RECORD EVIDENCE, MONUMENT EVIDENCE, OCCUPATIONAL EVIDENCE, TESTIMONIAL EVIDENCE OR ANY OTHER MATERIAL EVIDENCE YOU CONSIDERED, AND WHETHER THE MONUMENT WAS FOUND OR PLACED.

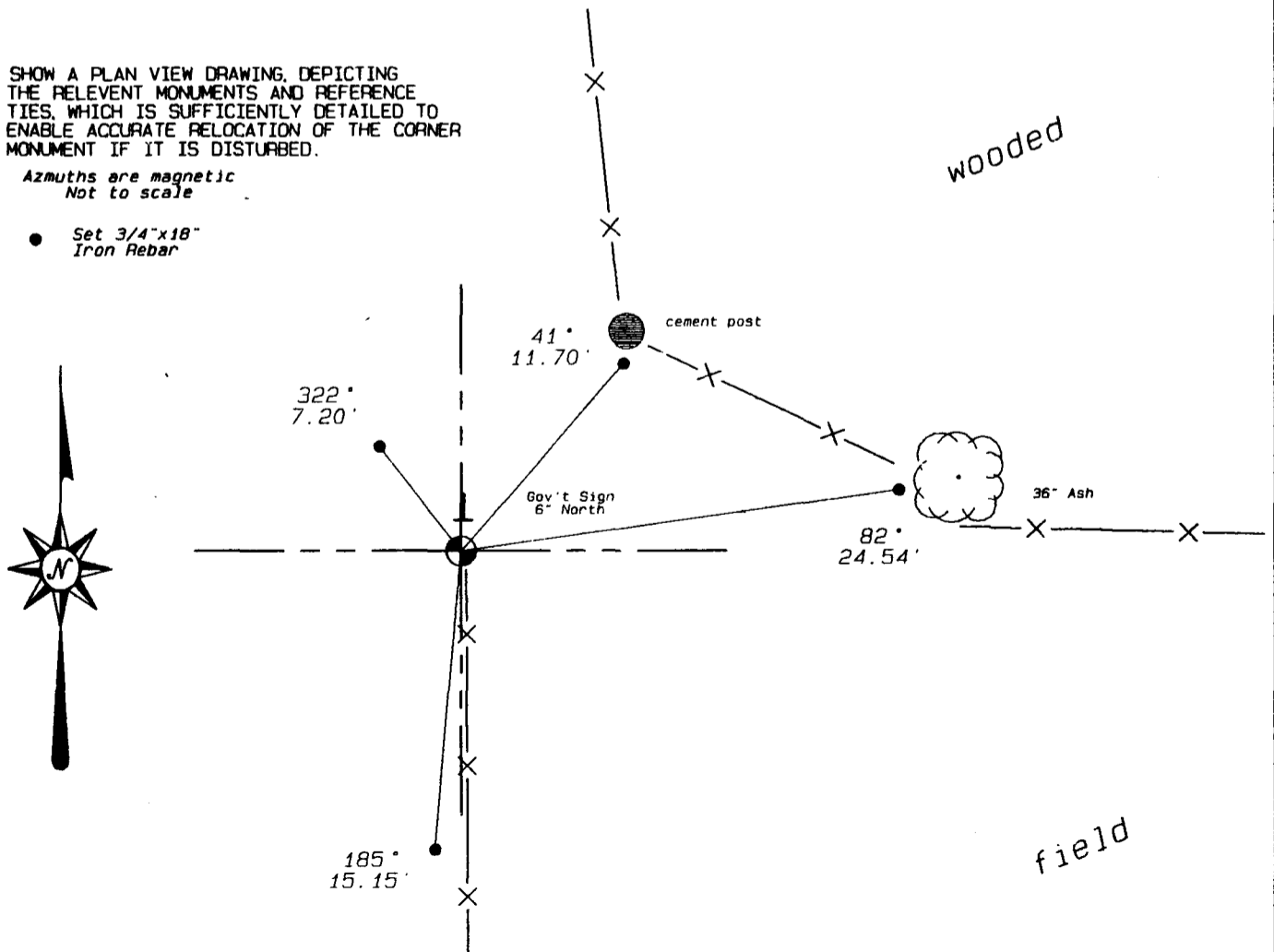
Found 1 3/8 round bar as called out in Tie Sheet done by William Jung in 1979. Replaced bar with a Vernon County Monument.

(C) IN THE PLAN VIEW DRAWING BELOW, PROVIDE REFERENCE TIES TO AT LEAST 4 WITNESS MONUMENTS OR, IF THE LOCATION IS WITHIN A MUNICIPALITY, TO AT LEAST 2 WITNESS MONUMENTS. (WITNESS MONUMENTS SHALL BE MADE OF CONCRETE, NATURAL STONE, IRON, OR OTHER EQUALLY DURABLE MATERIAL.) DESCRIBE WITNESS MONUMENTS.

(D) SHOW A PLAN VIEW DRAWING, DEPICTING THE RELEVANT MONUMENTS AND REFERENCE TIES, WHICH IS SUFFICIENTLY DETAILED TO ENABLE ACCURATE RELOCATION OF THE CORNER MONUMENT IF IT IS DISTURBED.

Azimuths are magnetic  
Not to scale

- Set 3/4"x18" Iron Rebar



(E) DESCRIBE ANY MATERIAL DISCREPANCY BETWEEN THE LOCATION OF THE CORNER AS RESTORED OR REESTABLISHED AND THE LOCATION OF THAT CORNER AS PREVIOUSLY RESTORED OR REESTABLISHED BY DISTANCE AND DIRECTION. SHOW THE DISCREPANCY ON THE PLAN VIEW DRAWING UNDER (D), ABOVE. SHOW THE DISTANCES BETWEEN THE CORNER AS PREVIOUSLY RESTORED OR REESTABLISHED AND (1) THE CORNER AS RESTORED OR REESTABLISHED, AND (2) TO AT LEAST 2 OF THE WITNESS MONUMENTS AS SHOWN ON THE DRAWING IN (D), ABOVE.

(NA)

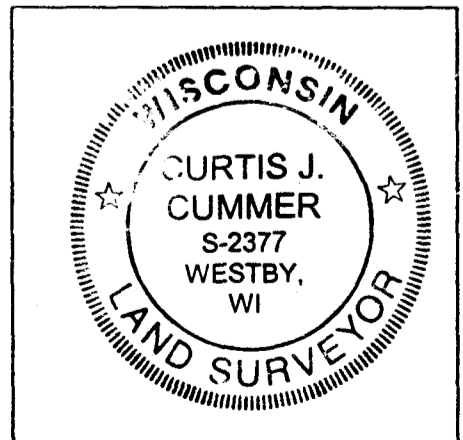
(F) WAS THE CORNER RESTORED THROUGH ACCEPTANCE OF (1) AN OBLITERATED EVIDENCE LOCATION, OR (2) A FOUND PERPETUATED LOCATION?

(2)


(G & H) WAS THE CORNER REESTABLISHED THROUGH LOST CORNER PROPORTIONATE METHODS? IF SO SHOW THE METHOD, INCLUDING THE DIRECTION AND DISTANCES TO THE OTHER PUBLIC LAND SURVEY CORNERS USED AS EVIDENCE OR USED FOR PROPORTIONING IN DETERMINING THE CORNER LOCATION.

(NA)

LAND SURVEYOR SEAL



(I) I, Curtis J. Cummer, CERTIFY THAT THE LOCATION SHOWN ON THIS RECORD WAS DETERMINED BY ME OR UNDER MY DIRECTION AND CONTROL AND THAT THIS U.S. PUBLIC LAND SURVEY MONUMENT RECORD IS CORRECT AND COMPLETE TO THE BEST OF MY KNOWLEDGE AND BELIEF.

 2/12/07  
SIGNATURE DATE

CERTIFICATE

CERTIFIED LAND CORNER

No. \_\_\_\_\_

I, William C. Jung, do hereby certify that on the 2nd day of October 1979 I found (evidence) ~~(no evidence)~~ of the East 1/4 corner of Section 3, T13 N, R5 W Fourth Principal Meridian, and I re-established said corner according to the Wisconsin Statutes as shown and described hereon.

Dated this 15th day of Oct. 1979

William C. Jung  
Registered Land Surveyor  
Title

History of corner establishment since Original Government Survey

W.H. Knower was at this corner in 1886 and may have set a stone at the corner.

Description of corner evidence found:

Searched for but could not find a stone. Accepted the occupied fence corner as the best possible evidence of the original government corner. This corner location is supported by section measurements.

No old witness trees were found.

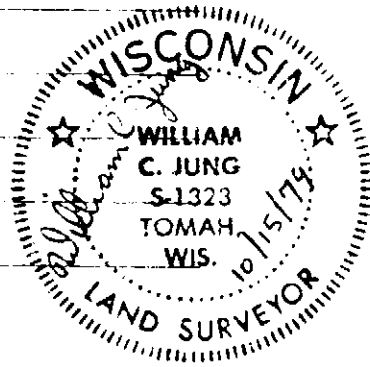
Description of corner and witness monuments, references and accessories used to perpetuate the original or re-established location of this corner:

Set a 1 3/8"x30" round iron bar on the East side of a R.R. tie brace post.

Witnesses to corner location:

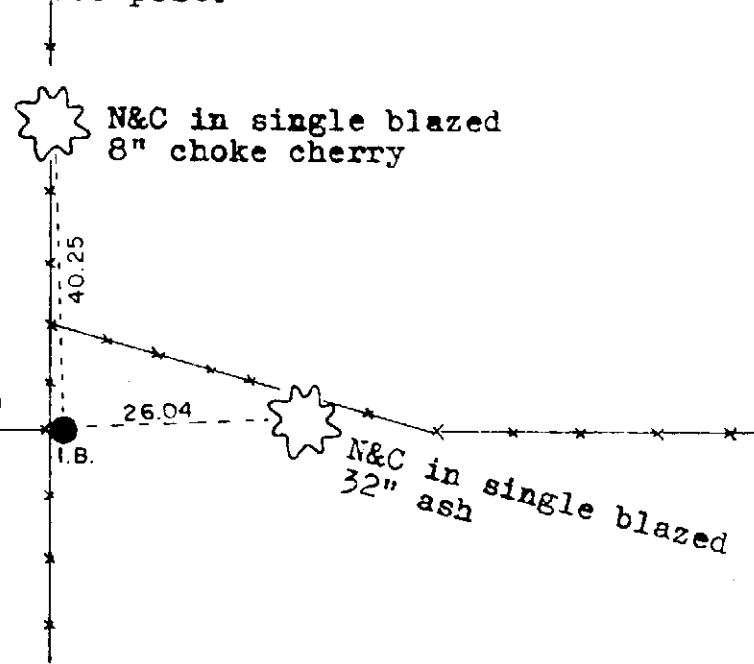
William Jung

Gary Dechant

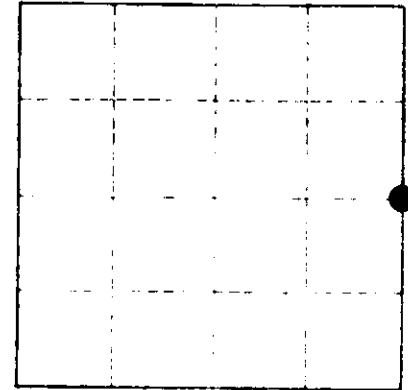


(NO SCALE)

(Downed fence)



Section 3 14



O = LOCATION CORNER

T. 13 N R. 5 W

WISCONSIN

SURVEY CONTROL ORDER

Horizontal	_____
Vertical	_____

WISCONSIN COORDINATE SYSTEM

Corner	East (X)	North (Y)	Elevation (Z)	Zone
Control Sta. Name				

City, Village or Town Jefferson

County of Vernon

COUNTY SURVEYOR FORM NO. 1