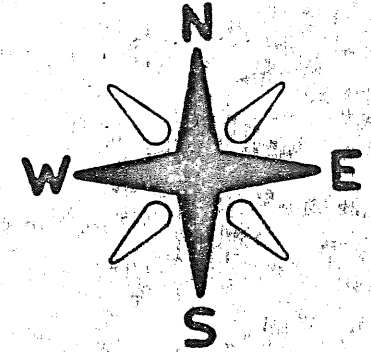
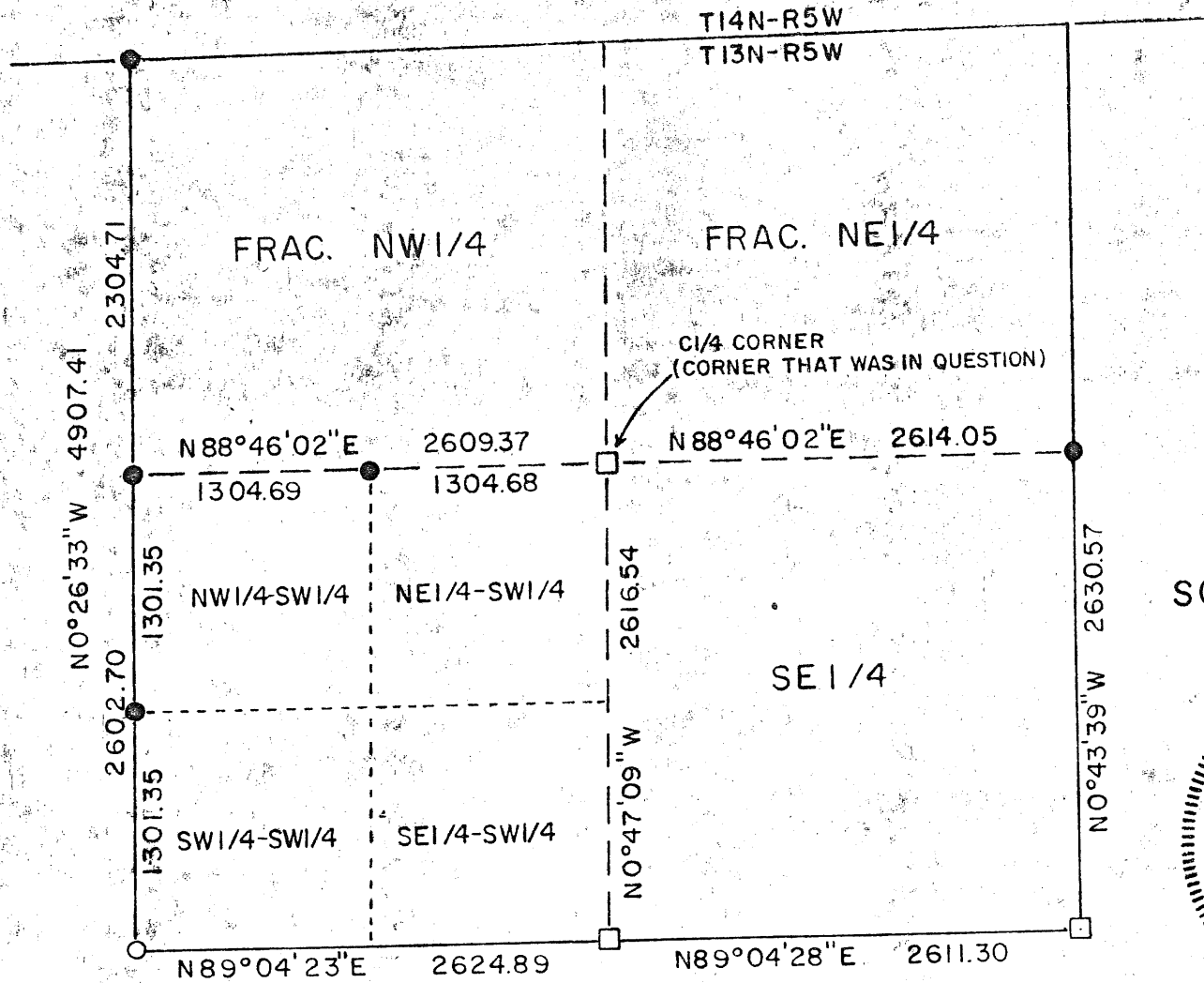
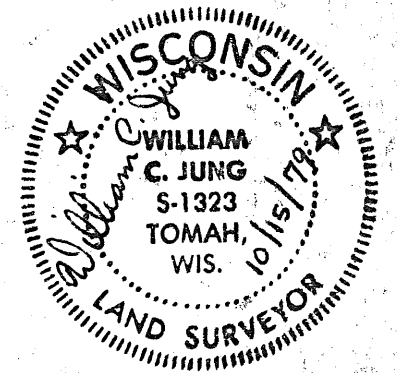


# SECTION SKETCH



ASSUMED NORTH

SCALE: 1" = 1000'



(SECTION 3-T13N-R5W)

**FILED**  
 COUNTY OF VERNON  
 VERA J. NELSON  
 REGISTER OF DEEDS

- = Found a stone
- = Set an iron pipe
- = Set an iron bar

MAY 9 1984

(See attached corner tie sheets for more corner detail.)

H.A. SIME & ASSOCIATES  
 TOMAH, WISCONSIN  
 FILE NO. 2588

October 15, 1979