

VERNON COUNTY

CERTIFIED U.S. PUBLIC LAND SURVEY MONUMENT RECORD

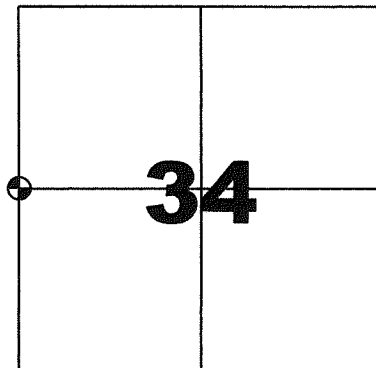
INSTRUCTIONS: THIS RECORD SHALL SHOW THE LOCATION OF THE CORNER AND SHALL INCLUDE ALL OF THE FOLLOWING ELEMENTS (A-1)

(A) IDENTIFY THE CORNER BY REFERENCE TO THE U.S. PUBLIC LAND SURVEY SYSTEM
WEST QUARTER CORNER SECTION 34, T13N, R2W

- ⊕ = CORNER MONUMENT RESTORED - 3/4" IRON ROD FOUND, 2" PIPE WITH BRASS CAP LUNDE MONUMENT SET
 WITNESSES TO CORNER LOCATION
- 1) SEAN M. WALSH
 - 2) LINDA. WALSH
 - 3)

VERNON COUNTY COORDINATES
 NORTHING: 150,471.323
 EASTING: 775,546.507

BASIS OF BEARINGS AND COORDINATES:
 WISCRS VERNON, NAD 83(2011)

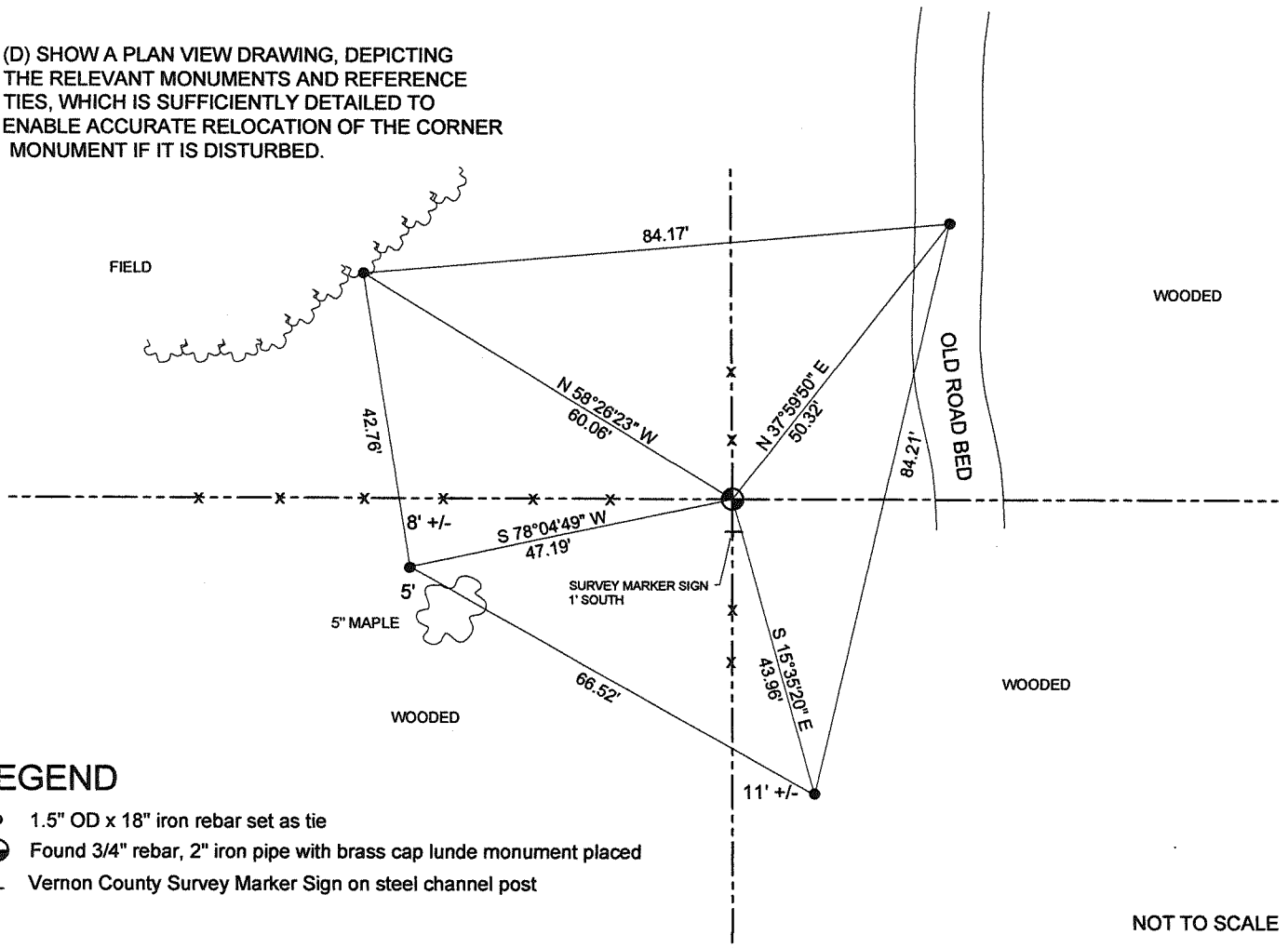


WEST QUARTER CORNER
SECTION 34 , TOWN 13 NORTH, RANGE 2 WEST



(C) IN THE PLAN VIEW DRAWING BELOW, PROVIDE REFERENCE TO AT LEAST 4 WITNESS MONUMENTS OR, IF THE LOCATION IS WITHIN A MUNICIPALITY, TO AT LEAST 2 WITNESS MONUMENTS. (WITNESS MONUMENTS SHALL BE MADE OF CONCRETE, NATURAL STONE, IRON OR OTHER EQUALLY DURABLE MATERIAL) DESCRIBE WITNESS MONUMENTS

(D) SHOW A PLAN VIEW DRAWING, DEPICTING THE RELEVANT MONUMENTS AND REFERENCE TIES, WHICH IS SUFFICIENTLY DETAILED TO ENABLE ACCURATE RELOCATION OF THE CORNER MONUMENT IF IT IS DISTURBED.



LEGEND

- 1.5" OD x 18" iron rebar set as tie
- ⊕ Found 3/4" rebar, 2" iron pipe with brass cap lunde monument placed
- ⊕ Vernon County Survey Marker Sign on steel channel post

NOT TO SCALE

VERNON COUNTY
CERTIFIED U.S. PUBLIC LAND SURVEY MONUMENT RECORD

RECOVERY PROCEDURES:

(E) A DESCRIPTION OF ANY RECORD EVIDENCE, MONUMENT EVIDENCE, OCCUPATIONAL EVIDENCE, TESTIMONIAL EVIDENCE OR ANY OTHER MATERIAL EVIDENCE CONSIDERED BY THE SURVEYOR, AND WHETHER THE MONUMENT WAS FOUND OR PLACED;

CORNER HISTORY:

ORIGINAL GOV'T SURVEY, ALFRED BROWN, 1846

1888 KNOWER FOUND GOV'T CORNER

1894 STERLING FOUND GOV'T CORNER

1997 WALSH PLAT OF SURVEY AND TIE SHEET SET 3/4" REBAR AT OCCUPATION

2005 JAQUISH FOUND AND ACCEPTED 3/4" REBAR DURING A SURVEY IN SECTION 34

2012 CUMMER FOUND AND ACCEPTED 3/4" REBAR DURING A SURVEY IN SECTION 34

I LOCATED A 3/4" REBAR AT OCCUPATION AS PREVIOUSLY ESTABLISHED BY MYSELF. CORNER SUBSEQUENTLY ACCEPTED BY JAQUISH AND CUMMER.

I ACCEPTED THIS AS THE BEST AVAILABLE EVIDENCE, AS PREVIOUSLY RE-ESTABLISHED BY MYSELF. I MONUMENTED AND PERPETUATED AS SHOWN HEREON.

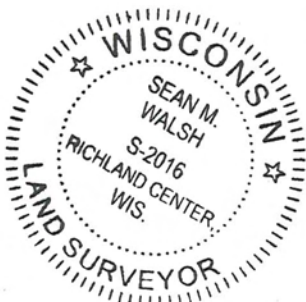
(F) WHETHER THE CORNER WAS RESTORED THROUGH ACCEPTANCE OF AN OBLITERATED EVIDENCE LOCATION OR A FOUND PERPETUATED LOCATION;

FOUND PERPETUATED LOCATION

(G) WHETHER THE CORNER WAS REESTABLISHED THROUGH LOST-CORNER PROPORTIONATE METHODS; IF SO, HOW THE DIRECTIONS AND DISTANCES TO OTHER PUBLIC LAND SURVEY CORNERS WHICH WERE USED AS EVIDENCE OR USED FOR PROPORTIONING IN DETERMINING THE CORNER LOCATION;

SURVEYOR'S CERTIFICATE: CHAPTER 7.08 (3) (I)

THE UNDERSIGNED HEREBY CERTIFIES THAT THE U.S. PUBLIC LAND SURVEY MONUMENT RECORD SHOWN WAS DETERMINED BY THEM OR UNDER THEIR DIRECTION AND IS CORRECT AND COMPLETE TO THE BEST OF THEIR KNOWLEDGE AND BELIEF.



Sean M. Walsh 9/17/15

DATE CERTIFIED

VERNON COUNTY COORDINATE FORM
Addendum To
U.S. PUBLIC LAND SURVEY MONUMENT RECORD

INSTRUCTIONS: THIS RECORD FORM SHOULD BE USED WHEN COORDINATES ARE PROVIDED FOR A PUBLIC LAND SURVEY CORNER AND SHALL INCLUDE ALL OF THE FOLLOWING ELEMENTS (A-D) UNLESS INDICATED AS OPTIONAL

(A) IDENTIFY THE CORNER BY REFERENCE TO THE U.S. PUBLIC LAND SURVEY SYSTEM IN DIAGRAM AT RIGHT

■ = CORNER MONUMENT

(B) COORDINATES:

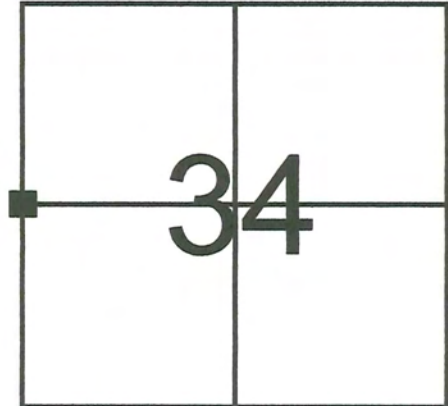
VERNON COUNTY (U.S. FEET)

NORTHING (Y): 150,471.323
EASTING (X): 775,546.507

GEOGRAPHIC (DMS to 4 decimal places):

LATITUDE: 43°33'35.5991" (N)
LONGITUDE: 90°36'41.4677" (W)

HORIZONTAL DATUM: NAD 83 (2011)



T 13 N, R 2 E/W

ORTHOMETRIC HT (U.S. ft): _____ (optional)

VERTICAL DATUM: _____

METHOD USED TO COMPUTE COORDINATES (check as applicable):

- RTK Observations from WISCORS Control
- RTK Observations from Passive WI. Ht. Modernization Control
- Static Baselines
- OPUS-RS Solution OPUS-S Solution
- Combination of conventional procedures with GPS observations to set temporary control
 - Single Angle Measurement
 - Closed Traverse Loop

BASE CONTROL USED FOR COORDINATE COMPUTATION:

Station Name	Station Coordinates	Date/Time
STARK S GPS PID DH5161	N: 148,109.956 E: 772,907.4853	7/8/2015 6:58 AM & 7/20/2015 10:05 AM
MA BRENNAN GPS PID DH5160	N: 148,602.507 E: 748,776.104	SAME
STARK E GPS PID DH5147	N: 159,415.294 E: 789,358.871	2/8/2015 9:55 AM & 7/20/2015 12:50 PM
STARK W GPS PID DH5162	N: 169,096.441 E: 760,343.022	SAME

* Please List Any Additional Control Stations Used/Notes/Information on Back of Form

(C) REASON FOR COORDINATE SUBMITTAL (check one):

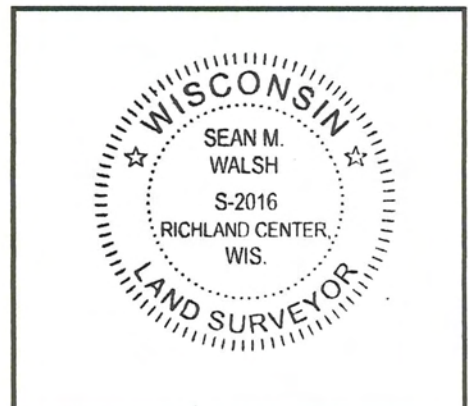
- Being Filed With a New U.S. PLS Monument Record
 - Or-
 - To Correct the Coordinates Listed on a Previously Filed PLS Monument Record
 - To Provide Coordinates for a Previously Filed PLS Monument Record without Coordinates
 - To Provide Supplemental Coordinates for Previously Filed U.S. Public Land Survey Monument Record
- R.L.S. & DATE OF PLS MONUMENT RECORD: _____

(D) AGENT(S) PERFORMING GPS OBSERVATIONS & COORDINATE COMPUTATION

- 1) SEAN M. WALSH, PLS
- 2) _____

I, SEAN M. WALSH, PLS
CERTIFY THAT THE COORDINATES PROVIDED ON THIS RECORD WERE DETERMINED BY ME OR UNDER MY DIRECTION AND CONTROL AND THAT THIS COORDINATE SUBMISSION FORM IS CORRECT AND COMPLETE TO THE BEST OF MY KNOWLEDGE AND BELIEF.

Seal



SIGNATURE

DATE

GOVERNMENT CORNER RECORD

West 1/4 CORNER, SECTION 34, TOWNSHIP 13 NORTH, RANGE 2 EAST - WEST,
 TOWN, CITY OR VILLAGE OF Stark
 TYPE OF MONUMENT: 3/4" X 24" Iron Rod ELEVATION - M.S.L. DATUM

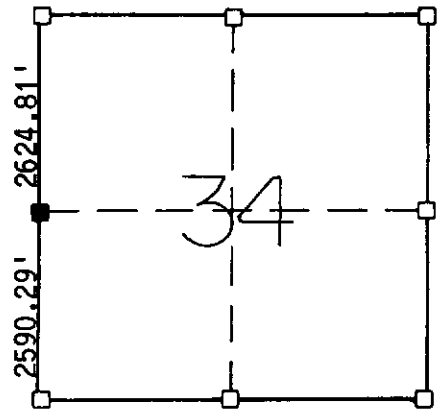
WITNESSES TO CORNER LOCATION

Christopher G. Reedy

Christopher J. Ruetten

SECTION 34, T 13 N, R 2 W

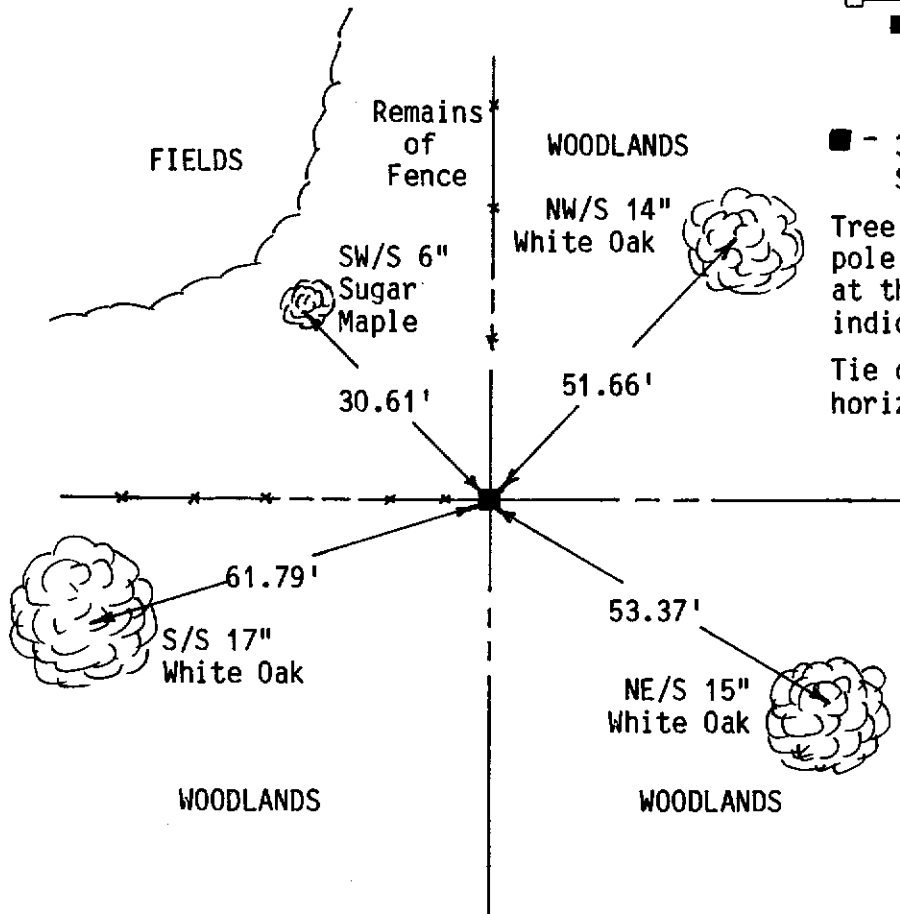
TOWN OF Stark



■ - CORNER LOCATION

NORTH

TIE SKETCH (SHOW ALL HELPFUL FEATURES)



■ - 3/4" X 24" Iron Rod Set at Corner

Tree ties are a 60d common pole spike set in a blaze at the base of the tree as indicated.

Tie distances were taped horizontally.



SURVEYOR'S CERTIFICATE

SEAL S- 2016

I, Sean M. Walsh, DO HEREBY CERTIFY THAT on 7-24-1997 I found physical occupation to be the only existing evidence of the West 1/4 Corner of Section 34, T 13 N, R 2 W. Subsequent to the Original Government Survey in 1846 the witness trees at this corner were used by W. H. Knower in 1888 and also by C. M. Sterling in 1894. Since this time the witness trees have been lost. Consequently I accepted the occupation as the best available evidence.

DATED THIS _____ DAY OF _____, 19____

REGISTERED LAND SURVEYOR

4