

VERNON COUNTY

CERTIFIED U.S. PUBLIC LAND SURVEY MONUMENT RECORD

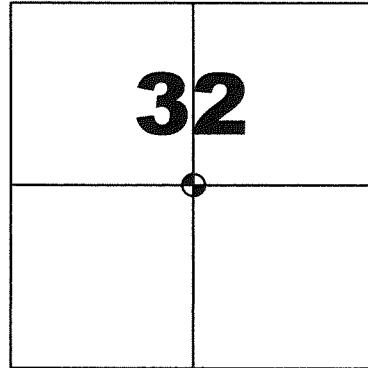
INSTRUCTIONS: THIS RECORD SHALL SHOW THE LOCATION OF THE CORNER AND SHALL INCLUDE ALL OF THE FOLLOWING ELEMENTS (A-1)

(A) IDENTIFY THE CORNER BY REFERENCE TO THE U.S. PUBLIC LAND SURVEY SYSTEM
CENTER QUARTER CORNER SECTION 32, T13N, R2W

- ⊕ = CORNER MONUMENT RESTORED - FOUND 3/4" REBAR, REPLACED WITH 2" IRON PIPE WITH BRASS CAP LUNDE MONUMENT.
 WITNESSES TO CORNER LOCATION
 1) SEAN M. WALSH
 2)
 3)

VERNON COUNTY COORDINATES
 NORTHING: 150,495.434
 EASTING: 767656.643

BASIS OF BEARINGS AND COORDINATES:
 WISCRS VERNON, NAD 83(2011)



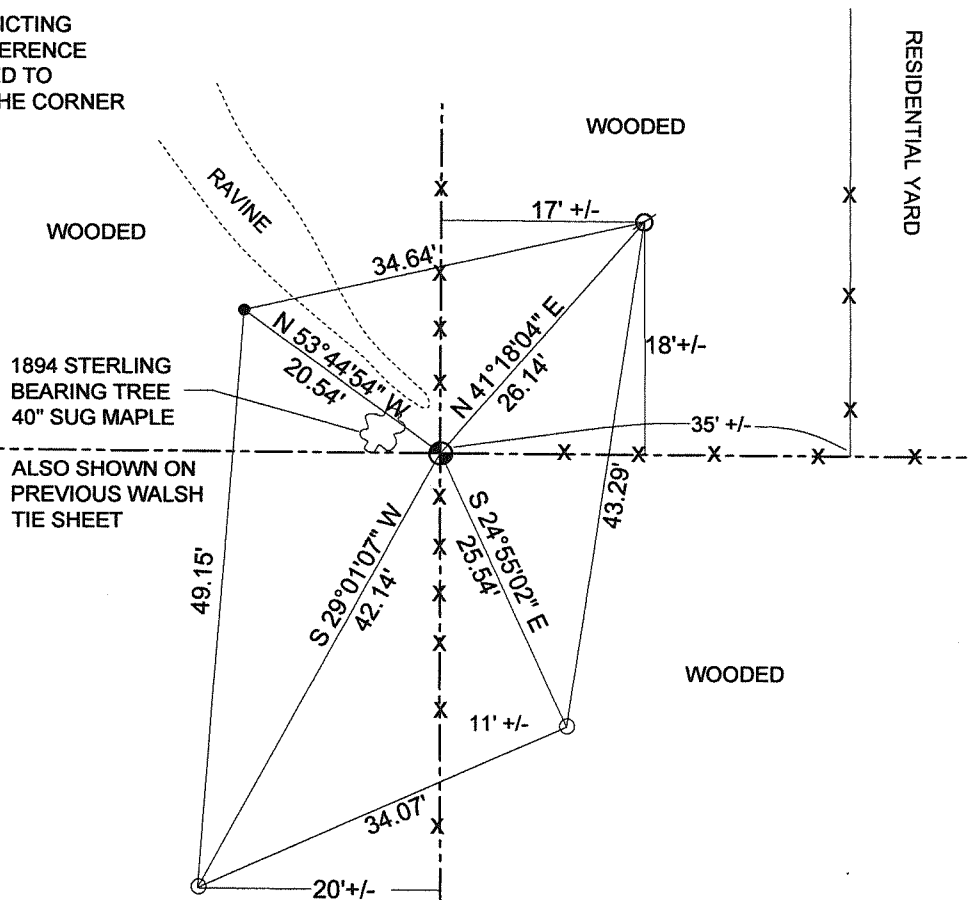
CENTER QUARTER CORNER

SECTION 32 , TOWN 13 NORTH, RANGE 2 WEST



(C) IN THE PLAN VIEW DRAWING BELOW, PROVIDE REFERENCE TO AT LEAST 4 WITNESS MONUMENTS OR, IF THE LOCATION IS WITHIN A MUNICIPALITY, TO AT LEAST 2 WITNESS MONUMENTS. (WITNESS MONUMENTS SHALL BE MADE OF CONCRETE, NATURAL STONE, IRON OR OTHER EQUALLY DURABLE MATERIAL) DESCRIBE WITNESS MONUMENTS

(D) SHOW A PLAN VIEW DRAWING, DEPICTING THE RELEVANT MONUMENTS AND REFERENCE TIES, WHICH IS SUFFICIENTLY DETAILED TO ENABLE ACCURATE RELOCATION OF THE CORNER MONUMENT IF IT IS DISTURBED.



LEGEND

- ⊕ 1.5" od x 18" iron pipe set
- 3/4" Dia iron rebar found
- 3/4" Dia x 18" iron rebar set as tie
- ⊕ Found 3/4" iron rebar 8" deep, replaced with 2" iron pipe with brass cap Lunde monument
- ⊕ Vernon County Survey Marker Sign on steel channel post

NOT TO SCALE

VERNON COUNTY

CERTIFIED U.S. PUBLIC LAND SURVEY MONUMENT RECORD

RECOVERY PROCEDURES:

(E) A DESCRIPTION OF ANY RECORD EVIDENCE, MONUMENT EVIDENCE, OCCUPATIONAL EVIDENCE, TESTIMONIAL EVIDENCE OR ANY OTHER MATERIAL EVIDENCE CONSIDERED BY THE SURVEYOR, AND WHETHER THE MONUMENT WAS FOUND OR PLACED;

CORNER HISTORY:

FIRST RECORD OF CORNER, STERLING, 1894 FOR SUBDIVISION OF SECTION 32, NOTED TWO TREES. ONE MAPLE TREE WITNESS REMAINS TO THE NORTHWEST OF THE CORNER.

1995 WALSH PLAT OF SURVEY AND TIE SHEET IN SECTION 32 SET CORNER FROM 1894 STERLING BT.

2008 JOHNS SET PK NAIL IN POST FROM TIES FOR SURVEY IN SECTION 32.

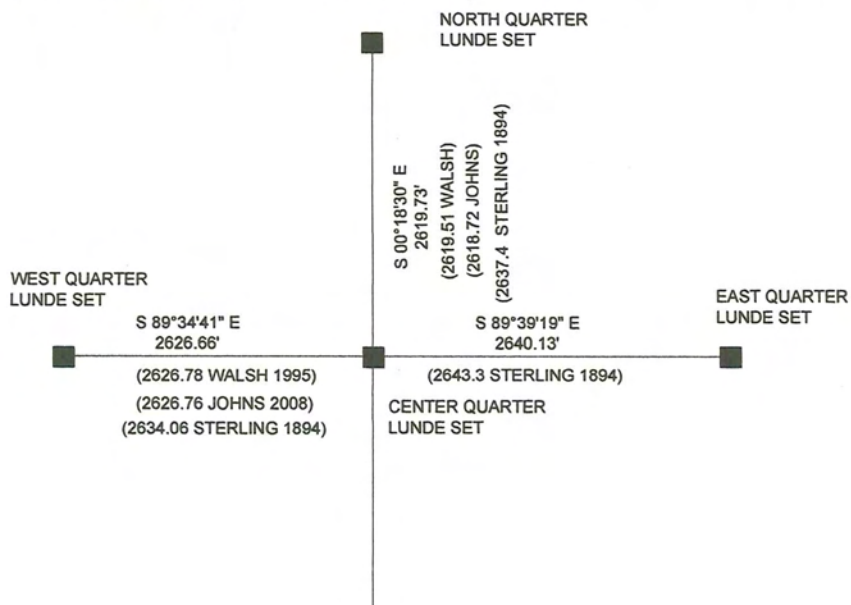
THIS CORNER FALLS IN AN AREA OF SIGNIFICANT FILL FROM EROSION WITH MUCH DEBRIS FROM OLD FENCING AND FALLEN TREE BRANCHES. CORNER POST APPEARED TO HAVE BEEN DISTURBED SINCE JOHNS PLACED PK NAIL IN TOP OF FENCE POST DUE TO FALLEN BRANCHES. PK NAIL REMAINS IN FENCE POST, BUT TOP OF POST APPEARS TO HAVE MOVED NORTHERLY.

I FOUND A 3/4" REBAR APPROXIMATELY 8" BELOW SURFACE ON SOUTHEAST SIDE OF EXISTING CORNER POST. REBAR FIT WELL WITH PREVIOUS TIES, THUS I ACCEPTED AS THE CORNER THAT WAS PREVIOUSLY DOCUMENTED BY MYSELF AND JOHNS. I REMONUMENTED AND PERPETUATED AS SHOWN HEREON.

(F) WHETHER THE CORNER WAS RESTORED THROUGH ACCEPTANCE OF AN OBLITERATED EVIDENCE LOCATION OR A FOUND PERPETUATED LOCATION;

FOUND PERPETUATED LOCATION BASED ON 1984 STERLING BEARING TREE

(G) WHETHER THE CORNER WAS REESTABLISHED THROUGH LOST-CORNER PROPORTIONATE METHODS; IF SO, SHOW THE DIRECTIONS AND DISTANCES TO OTHER PUBLIC LAND SURVEY CORNERS WHICH WERE USED AS EVIDENCE OR USED FOR PROPORTIONING IN DETERMINING THE CORNER LOCATION;



SURVEYOR'S CERTIFICATE: CHAPTER 7.08 (3) (I)



THE UNDERSIGNED HEREBY CERTIFIES THAT THE U.S. PUBLIC LAND SURVEY MONUMENT RECORD SHOWN WAS DETERMINED BY THEM OR UNDER THEIR DIRECTION AND IS CORRECT AND COMPLETE TO THE BEST OF THEIR KNOWLEDGE AND BELIEF.

Sean M. Walsh

9/17/15

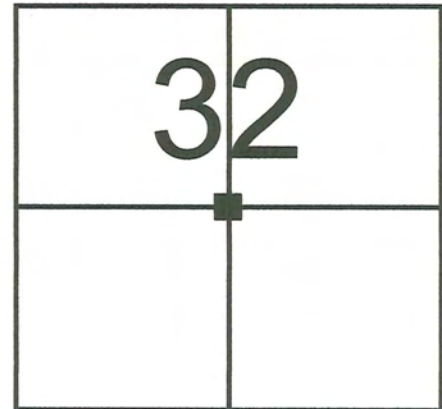
DATE CERTIFIED

VERNON COUNTY COORDINATE FORM
Addendum To
U.S. PUBLIC LAND SURVEY MONUMENT RECORD

INSTRUCTIONS: THIS RECORD FORM SHOULD BE USED WHEN COORDINATES ARE PROVIDED FOR A PUBLIC LAND SURVEY CORNER AND SHALL INCLUDE ALL OF THE FOLLOWING ELEMENTS (A-D) UNLESS INDICATED AS OPTIONAL

(A) IDENTIFY THE CORNER BY REFERENCE TO THE U.S. PUBLIC LAND SURVEY SYSTEM IN DIAGRAM AT RIGHT

■ = CORNER MONUMENT



T 13 N, R 2 E/W

(B) COORDINATES:

VERNON COUNTY (U.S. FEET)

NORTHING (Y): 150,495.434
EASTING (X): 767,656.643

GEOGRAPHIC (DMS to 4 decimal places):

LATITUDE: 43°33'35.9844" (N)
LONGITUDE: 90°38'28.6131" (W)

HORIZONTAL DATUM: NAD 83 (2011)

ORTHOMETRIC HT (U.S. ft): _____ (optional)

VERTICAL DATUM: _____

METHOD USED TO COMPUTE COORDINATES (check as applicable):

- RTK Observations from WISCORS Control
- RTK Observations from Passive WI. Ht. Modernization Control
- Static Baselines
- OPUS-RS Solution OPUS-S Solution
- Combination of conventional procedures with GPS observations to set temporary control
 - Single Angle Measurement
 - Closed Traverse Loop

BASE CONTROL USED FOR COORDINATE COMPUTATION:

Station Name	Station Coordinates	Date/Time
STARK S GPS PID DH5161	N: 148,109.956 E: 772,907.4853	7/8/2015 6:58 AM & 7/20/2015 10:05 AM
MA BRENNAN GPS PID DH5160	N: 148,602.507 E: 748,776.104	SAME
STARK E GPS PID DH5147	N: 159,415.294 E: 789,358.871	2/8/2015 9:55 AM & 7/20/2015 12:50 PM
STARK W GPS PID DH5162	N: 169,096.441 E: 760,343.022	SAME

* Please List Any Additional Control Stations Used/Notes/Information on Back of Form

(C) REASON FOR COORDINATE SUBMITTAL (check one):

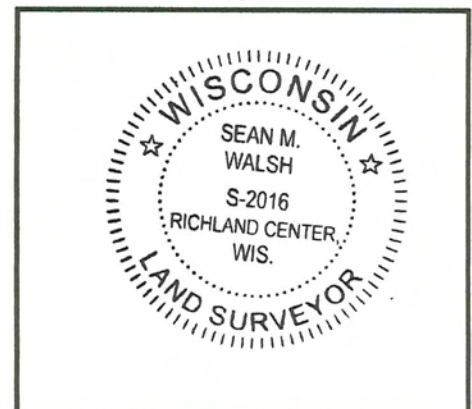
- Being Filed With a New U.S. PLS Monument Record
 - Or-
 - To Correct the Coordinates Listed on a Previously Filed PLS Monument Record
 - To Provide Coordinates for a Previously Filed PLS Monument Record without Coordinates
 - To Provide Supplemental Coordinates for Previously Filed U.S. Public Land Survey Monument Record
- R.L.S. & DATE OF PLS MONUMENT RECORD: _____

(D) AGENT(S) PERFORMING GPS OBSERVATIONS & COORDINATE COMPUTATION

- 1) SEAN M. WALSH, PLS
- 2) _____

I, SEAN M. WALSH, PLS
CERTIFY THAT THE COORDINATES PROVIDED ON THIS RECORD WERE DETERMINED BY ME OR UNDER MY DIRECTION AND CONTROL AND THAT THIS COORDINATE SUBMISSION FORM IS CORRECT AND COMPLETE TO THE BEST OF MY KNOWLEDGE AND BELIEF.

Seal



SIGNATURE

DATE

