

VERNON COUNTY

CERTIFIED U.S. PUBLIC LAND SURVEY MONUMENT RECORD

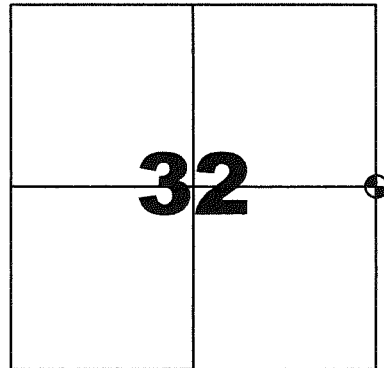
INSTRUCTIONS: THIS RECORD SHALL SHOW THE LOCATION OF THE CORNER AND SHALL INCLUDE ALL OF THE FOLLOWING ELEMENTS (A-1)

(A) IDENTIFY THE CORNER BY REFERENCE TO THE U.S. PUBLIC LAND SURVEY SYSTEM
EAST QUARTER CORNER SECTION 32, T13N, R2W

- ⊕ = CORNER MONUMENT RESTORED -SET 2" IRON PIPE WITH BRASS CAP LUNDE MONUMENT WITNESSES TO CORNER LOCATION
- 1) SEAN M. WALSH
 - 2)
 - 3)

VERNON COUNTY COORDINATES
 NORTHING: 150,479.544
 EASTING: 770,296.723

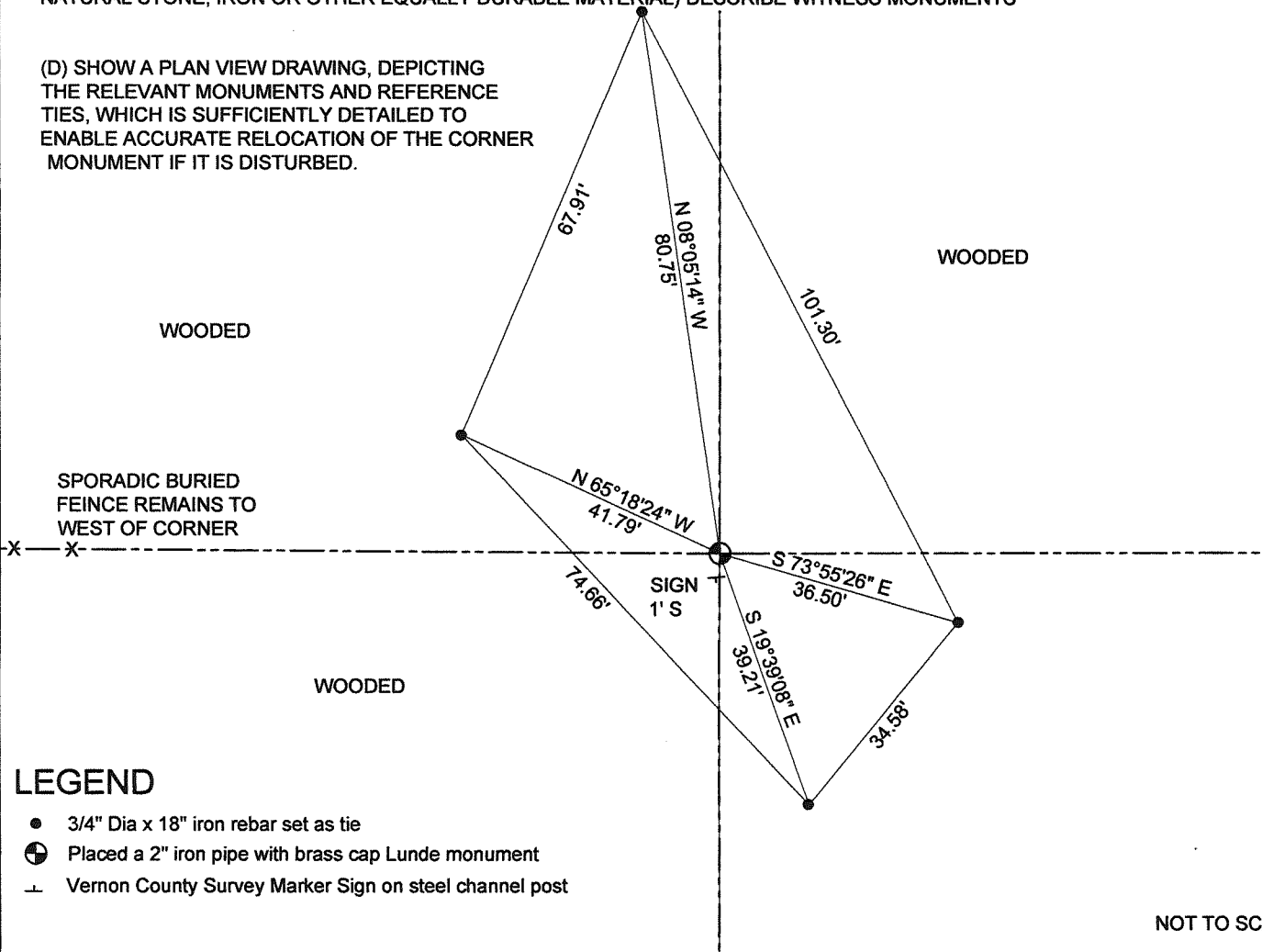
BASIS OF BEARINGS AND COORDINATES:
 WISCRS VERNON, NAD 83(2011)



EAST QUARTER CORNER
SECTION 32 , TOWN 13 NORTH, RANGE 2 WEST

(C) IN THE PLAN VIEW DRAWING BELOW, PROVIDE REFERENCE TO AT LEAST 4 WITNESS MONUMENTS OR, IF THE LOCATION IS WITHIN A MUNICIPALITY, TO AT LEAST 2 WITNESS MONUMENTS. (WITNESS MONUMENTS SHALL BE MADE OF CONCRETE, NATURAL STONE, IRON OR OTHER EQUALLY DURABLE MATERIAL) DESCRIBE WITNESS MONUMENTS

(D) SHOW A PLAN VIEW DRAWING, DEPICTING THE RELEVANT MONUMENTS AND REFERENCE TIES, WHICH IS SUFFICIENTLY DETAILED TO ENABLE ACCURATE RELOCATION OF THE CORNER MONUMENT IF IT IS DISTURBED.



LEGEND

- 3/4" Dia x 18" iron rebar set as tie
- ⊕ Placed a 2" iron pipe with brass cap Lunde monument
- ⊥ Vernon County Survey Marker Sign on steel channel post

NOT TO SCALE

VERNON COUNTY

CERTIFIED U.S. PUBLIC LAND SURVEY MONUMENT RECORD

RECOVERY PROCEDURES:

(E) A DESCRIPTION OF ANY RECORD EVIDENCE, MONUMENT EVIDENCE, OCCUPATIONAL EVIDENCE, TESTIMONIAL EVIDENCE OR ANY OTHER MATERIAL EVIDENCE CONSIDERED BY THE SURVEYOR, AND WHETHER THE MONUMENT WAS FOUND OR PLACED;

CORNER HISTORY:

ORIGINAL GOV'T SURVEY, ALFRED BROWN, 1846

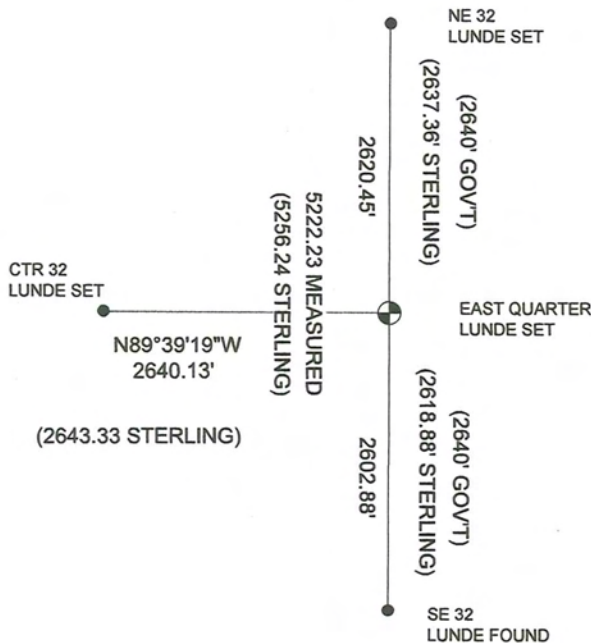
1894 STERLING USED CORNER FOR SUBDIVISION OF SECTIONS 32 AND 33, NO TREES OR MONUMENTATION NOTED, DISTANCES ONLY. ON THE STERLING SURVEY THE CORNER IS MARKED ONLY WITH "1/4", NO OTHER NOTATIONS SHOWN. STERLING LOCATION IS NOT SHOWN AS EQUIDISTANCE, THUS SOME EVIDENCE MUST HAVE BEEN USED TO MEASURE TO THE CORNER. NO SUBSEQUENT RECORD OF THIS CORNER WAS FOUND.

I WAS NOT ABLE TO FIND EVIDENCE OF THE ORIGINAL GOVERNMENT BEARING TREES OR ANY MONUMENTATION. AFTER EXHAUSTIVE SEARCH, FINDING ONLY SPORADIC WIRE IN TREES GENERALLY RUNNING EAST AND WEST IN THIS VICINITY, I REESTABLISHED THIS CORNER BY SINGLE PROPORTIONATE MEASURE BASED ON THE 1894 STERLING SURVEY AS SHOWN BELOW. THE PROPORTIONATE LOCATION AGREES REASONABLY WITH THE FENCE REMAINS FOUND RUNNING EAST AND WEST IN THE VICINITY. BETTER FENCE REMAINS ARE LOCATED TO THE WEST AT THE TOP OF THE RIDGE WHICH BECOME MORE SPORADIC AFTER GOING OVER THE BLUFF NEAR THE SHOULDER OF THE RIDGE.

(F) WHETHER THE CORNER WAS RESTORED THROUGH ACCEPTANCE OF AN OBLITERATED EVIDENCE LOCATION OR A FOUND PERPETUATED LOCATION;

OBLITERATED EVIDENCE LOCATION

(G) WHETHER THE CORNER WAS REESTABLISHED THROUGH LOST-CORNER PROPORTIONATE METHODS; IF SO, HOW THE DIRECTIONS AND DISTANCES TO OTHER PUBLIC LAND SURVEY CORNERS WHICH WERE USED AS EVIDENCE OR USED FOR PROPORTIONING IN DETERMINING THE CORNER LOCATION;



SURVEYOR'S CERTIFICATE: CHAPTER 7.08 (3) (I)



THE UNDERSIGNED HEREBY CERTIFIES THAT THE U.S. PUBLIC LAND SURVEY MONUMENT RECORD SHOWN WAS DETERMINED BY THEM OR UNDER THEIR DIRECTION AND IS CORRECT AND COMPLETE TO THE BEST OF THEIR KNOWLEDGE AND BELIEF.

Sean M. Walsh 9/12/15

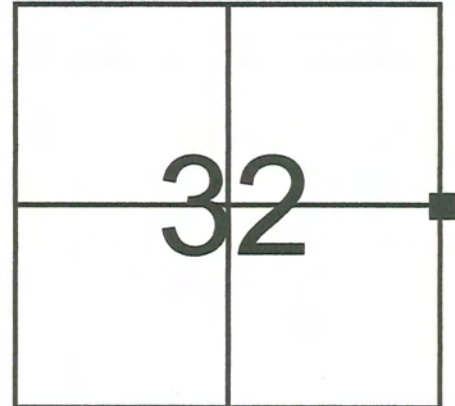
DATE CERTIFIED

VERNON COUNTY COORDINATE FORM
Addendum To
U.S. PUBLIC LAND SURVEY MONUMENT RECORD

INSTRUCTIONS: THIS RECORD FORM SHOULD BE USED WHEN COORDINATES ARE PROVIDED FOR A PUBLIC LAND SURVEY CORNER AND SHALL INCLUDE ALL OF THE FOLLOWING ELEMENTS (A-D) UNLESS INDICATED AS OPTIONAL

(A) IDENTIFY THE CORNER BY REFERENCE TO THE U.S. PUBLIC LAND SURVEY SYSTEM IN DIAGRAM AT RIGHT

■ = CORNER MONUMENT



T 13 N, R 2 E/W

(B) COORDINATES:

VERNON COUNTY (U.S. FEET)

NORTHING (Y): 150,479.544
EASTING (X): 770,296.723

GEOGRAPHIC (DMS to 4 decimal places):

LATITUDE: 43°33'35.7813" (N)
LONGITUDE: 90°37'52.7606" (W)

HORIZONTAL DATUM: NAD 83 (2011)

ORTHOMETRIC HT (U.S. ft): _____ (optional)

VERTICAL DATUM: _____

METHOD USED TO COMPUTE COORDINATES (check as applicable):

- RTK Observations from WISCORS Control
 RTK Observations from Passive WI. Ht. Modernization Control
 Static Baselines
 OPUS-RS Solution OPUS-S Solution
 Combination of conventional procedures with GPS observations to set temporary control
 Single Angle Measurement Closed Traverse Loop

BASE CONTROL USED FOR COORDINATE COMPUTATION:

Station Name	Station Coordinates	Date/Time
STARK S GPS PID DH5161	N: 148,109.956 E: 772,907.4853	8/6/2015 7:47 AM & 8/22/2015 8:03 AM
MA BRENNAN GPS PID DH5160	N: 148,602.507 E: 748,776.104	SAME
STARK E GPS PID DH5147	N: 159,415.294 E: 789,358.871	SAME
STARK W GPS PID DH5162	N: 169,096.441 E: 760,343.022	SAME

* Please List Any Additional Control Stations Used/Notes/Information on Back of Form

(C) REASON FOR COORDINATE SUBMITTAL (check one):

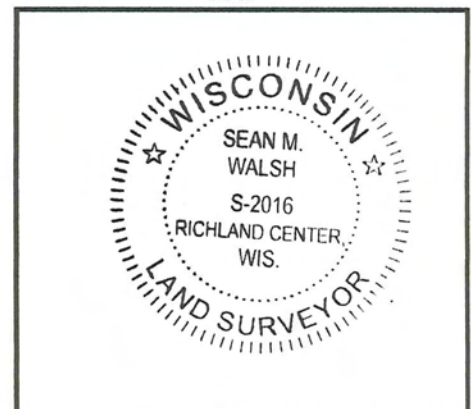
- Being Filed With a New U.S. PLS Monument Record
 -Or-
 To Correct the Coordinates Listed on a Previously Filed PLS Monument Record
 To Provide Coordinates for a Previously Filed PLS Monument Record without Coordinates
 To Provide Supplemental Coordinates for Previously Filed U.S. Public Land Survey Monument Record
 R.L.S. & DATE OF PLS MONUMENT RECORD: _____

(D) AGENT(S) PERFORMING GPS OBSERVATIONS & COORDINATE COMPUTATION

- 1) SEAN M. WALSH, PLS
 2) _____

I, SEAN M. WALSH, PLS
 CERTIFY THAT THE COORDINATES PROVIDED ON THIS RECORD WERE DETERMINED BY ME OR UNDER MY DIRECTION AND CONTROL AND THAT THIS COORDINATE SUBMISSION FORM IS CORRECT AND COMPLETE TO THE BEST OF MY KNOWLEDGE AND BELIEF.

Seal



SIGNATURE

DATE