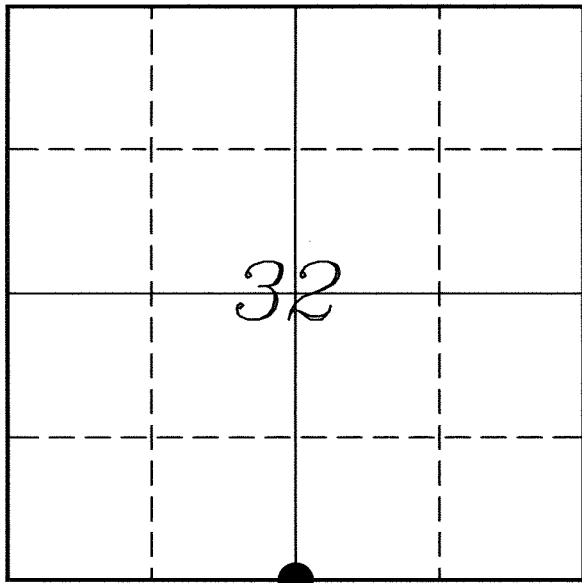

U. S. PUBLIC LAND SURVEY MONUMENT RECORD

SECTION 32, T13N, R2W, TOWN OF STARK VERNON COUNTY, WISCONSIN



LOCATION OF LANDMARK

Crew: Laurence E Johns III
Larry Handschy

Date: 19 March 2009

VERNON COUNTY COORDINATE SYSTEM	
Northing	147878.324
Easting	767665.319
Elevation	
TYPE OF LANDMARK:	
Set Lunde Monument	
BEARINGS ARE REFERENCED TO:	
Vernon County Coordinates	

Describe any record evidence, monument evidence, testimonial evidence or any other material evidence you considered and whether the monument was found or restored through acceptance of an obliterated evidence location.

No bearing trees from the original government survey or Sterling's survey were located.

Found the Richland County monument set by Sean Walsh.

Accepted the line between the NW & N 1/4 Corners of Section 5 as being the South line of Section 32. Went the Government offset distance from the N 1/4 Corner of Section 5 and accepted this location as the best available evidence of the original government corner.

Describe or show any material discrepancy between the location of the restored corner and that of the corner previously restored or re-established.

J E Whitcher established this corner during the original government survey in April 1845.

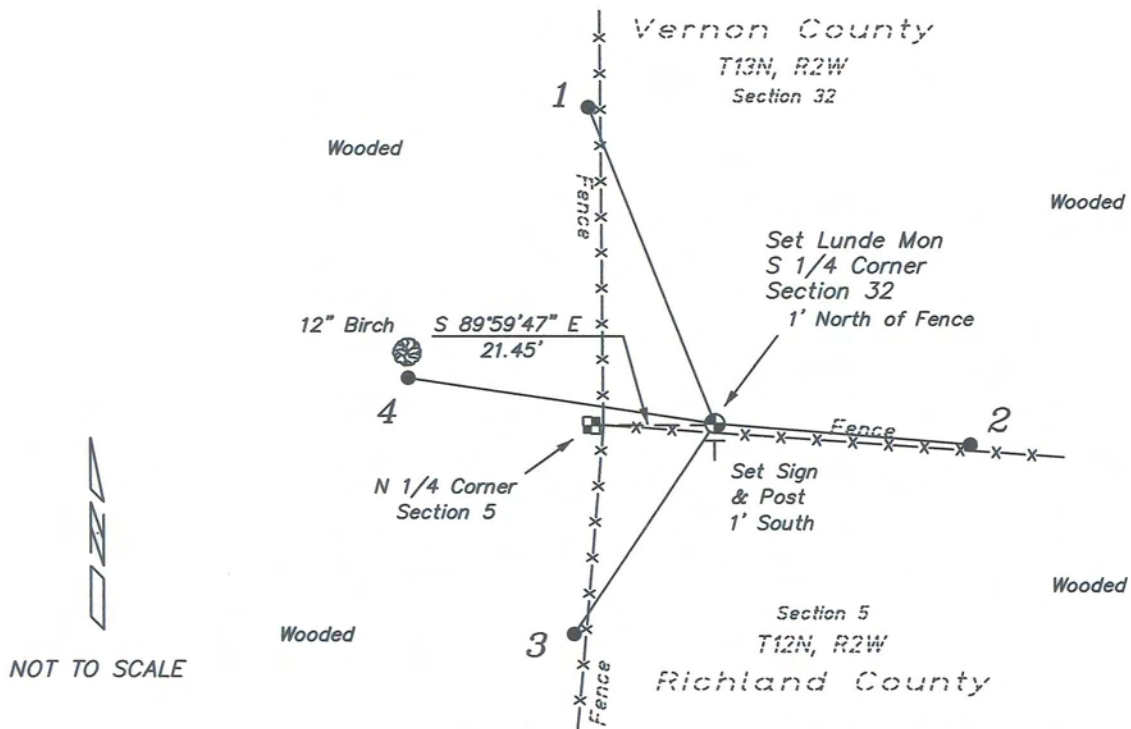
C M Sterling was at this corner during a survey of Sections 32 & 33, in March 1894. He found the original government corner.

Sean Walsh established the North Line of Section 5, T12N, R2W, in August 1991. He set Richland County monuments along this line. He did not set a monument at the S 1/4 Corner of Section 32.

Sean Walsh performed a survey in the NW1/4 of Section 32, in August 1995. He established the W 1/4 Corner and Center of Section 32 during this survey.

RECORD OF DURABLE WITNESS MONUMENTS

NO	DESCRIPTION	BEARING	DISTANCE
1	Set 3/4" x 18" Iron Rod In Fence Line	N 21°36'55" W	59.82'
2	Set 3/4" x 18" Iron Rod In Fence Line	S 85°36'30" E	44.44'
3	Set 3/4" x 18" Iron Rod In Fence Line	S 34°07'21" W	43.89'
4	Set 3/4" x 18" Iron Rod 2' South of a 12" Birch Tree	N 81°08'19" W	53.98'



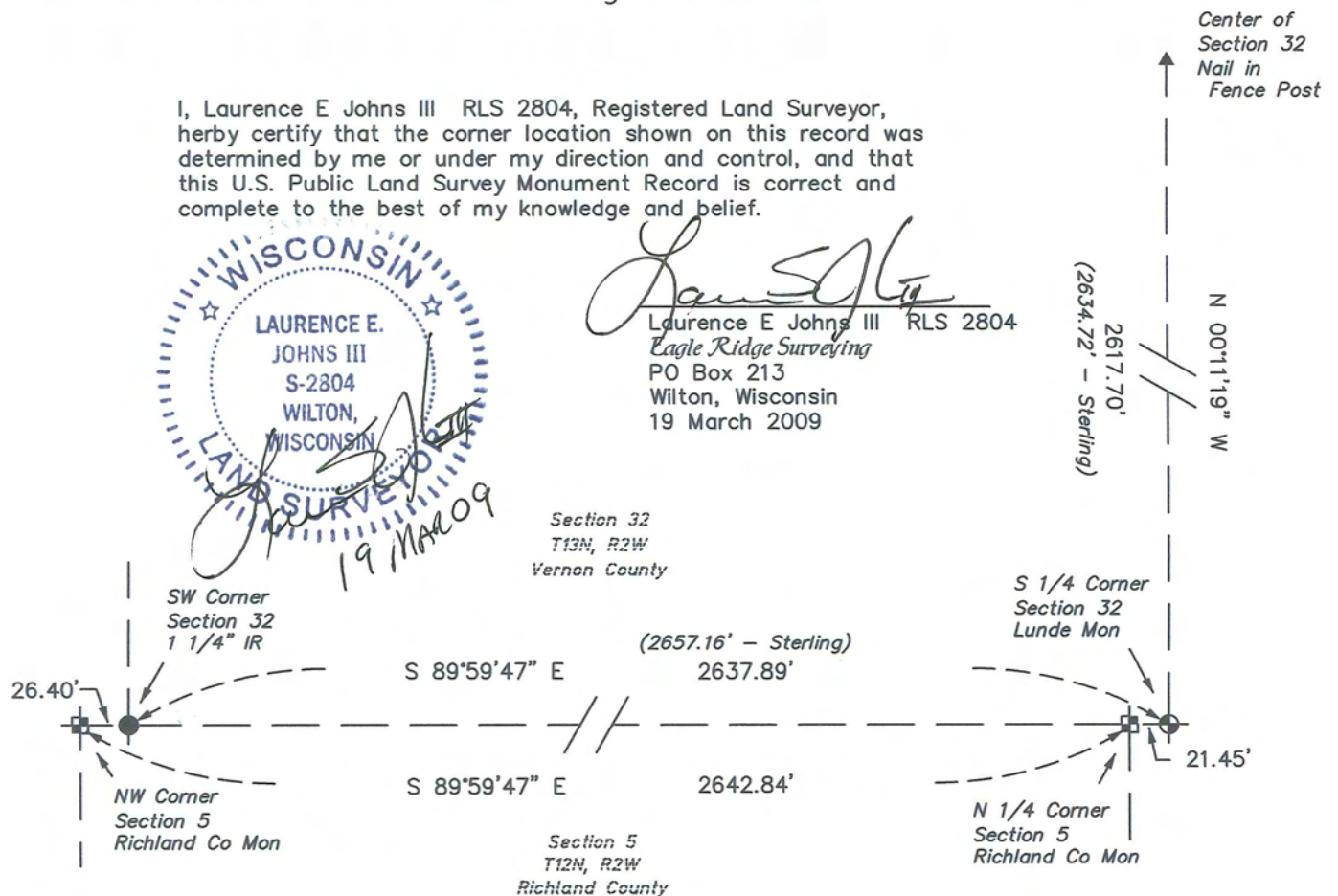
PLAN VIEW DRAWING OF REFERENCE TIES

Map Showing Distance And Direction To Other Public Land Survey
Corners Used For Re-Establishing The Corner

I, Laurence E Johns III RLS 2804, Registered Land Surveyor,
herby certify that the corner location shown on this record was
determined by me or under my direction and control, and that
this U.S. Public Land Survey Monument Record is correct and
complete to the best of my knowledge and belief.



Laurence E. Johns III
Laurence E Johns III RLS 2804
Eagle Ridge Surveying
PO Box 213
Wilton, Wisconsin
19 March 2009

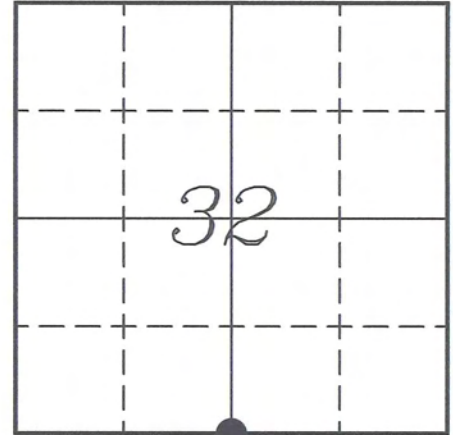


VERNON COUNTY COORDINATE SUBMISSION FORM
 "As An Addendum To"
VERNON COUNTY
CERTIFIED U.S. PUBLIC LAND SURVEY MONUMENT RECORD

INSTRUCTIONS: THIS RECORD FORM SHOULD BE USED WHEN COORDINATES ARE PROVIDED FOR A PUBLIC LAND SURVEY CORNER AND SHALL INCLUDE ALL OF THE FOLLOWING ELEMENTS (A-D)

(A) IDENTIFY THE CORNER BY REFERENCE TO THE U.S. PUBLIC LAND SURVEY SYSTEM IN DIAGRAM AT RIGHT

● = CORNER MONUMENT



(B) COORDINATES:

GEOGRAPHIC (Degrees Minutes Seconds)

LATITUDE: 43° 33' 10.1382" N

LONGITUDE: 90° 38' 28.5560" W

ELLIPSOID HT (m): _____

DATUM: NAD 1983 (2007)

GEOID99 ADJ: -33.467

ORTHOMETRIC HT: _____

VERNON COUNTY (U.S. FEET)

Coord Quality (+/-)

NORTHING (Y): 147878.324 _____

EASTING (X): 767665.319 _____

GPS METHOD USED TO COMPUTE COORDINATES (check as applicable)

- RTK Observations Static Baselines OPUS-RS Solution OPUS-S Solution
 Combination of GPS Observations & Conventional Procedures

Was a Least Squares Adjustment Used to Compute Coordinates? Yes / No

BASE CONTROL USED FOR COORDINATE COMPUTATION

Station Name	Station Coordinates	Date/Time
<u>OPUS Control Station</u>	<u>43° 33' 22.5597" N 90° 39' 16.0419" W</u> <u>N - 149130.398 E - 764166.270</u>	<u>01/19/2009 - 16:15</u>
<u>Same</u>	_____	<u>03/17/2009 - 13:20</u>

(C) REASON FOR COORDINATES SUBMITTAL (check one)

- Being Filed With a New U.S. PLS Monument Record
 To Correct the Coordinates Listed on a Previously Filed PLS Monument Record
 To Provide Coordinates for Previously Filed PLS Monument Record without Coordinates
 To Provide Supplemental Coordinates for a Previously Filed PLS Monument Record

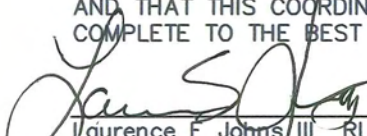
MOST RECENT PLS MONUMENT RECORD DATE:

R.L.S. WHO CREATED MOST RECENT PLS MONUMENT RECORD:

(D) AGENT(S) PERFORMING GPS OBSERVATIONS & COORDINATE COMPUTATION

- 1) LAURENCE E JOHNS III
 2) _____

I, LAURENCE E JOHNS III RLS 2804, REGISTERED LAND SURVEYOR, HEREBY CERTIFY THAT THE COORDINATES PROVIDED ON THIS RECORD WERE DETERMINED BY ME OR UNDER MY DIRECTION AND CONTROL AND THAT THIS COORDINATE SUBMISSION FORM IS CORRECT AND COMPLETE TO THE BEST OF MY KNOWLEDGE AND BELIEF.


 Laurence E. Johns III - RLS 2804
 Eagle Ridge Surveying
 PO Box 213
 Wilton, Wisconsin
 19 March 2009

