

# VERNON COUNTY

## CERTIFIED U.S. PUBLIC LAND SURVEY MONUMENT RECORD

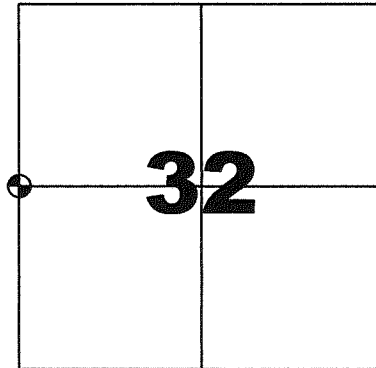
INSTRUCTIONS: THIS RECORD SHALL SHOW THE LOCATION OF THE CORNER AND SHALL INCLUDE ALL OF THE FOLLOWING ELEMENTS (A-1)

(A) IDENTIFY THE CORNER BY REFERENCE TO THE U.S. PUBLIC LAND SURVEY SYSTEM  
**WEST QUARTER CORNER SECTION 32, T13N, R2W**

- ⊕ = CORNER MONUMENT RESTORED - FOUND 3/4" REBAR, SET 2" PIPE WITH BRASS CAP LUNDE MONUMENT WITNESSES TO CORNER LOCATION
- 1) SEAN M. WALSH
  - 2)
  - 3)

VERNON COUNTY COORDINATES  
 NORTHING: 150,514.776  
 EASTING: 765,030.054

BASIS OF BEARINGS AND COORDINATES:  
 WISCRS VERNON, NAD 83(2011)



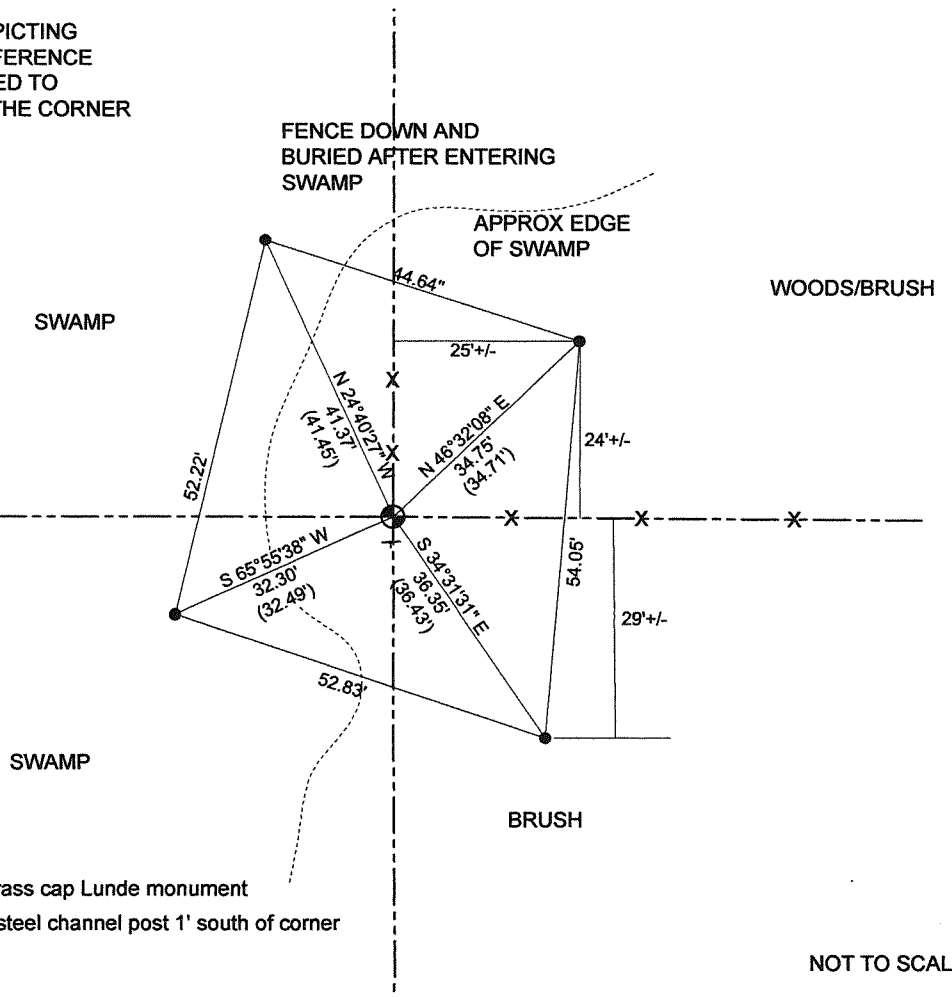
**WEST QUARTER CORNER**

**SECTION 32 , TOWN 13 NORTH, RANGE 2 WEST**



(C) IN THE PLAN VIEW DRAWING BELOW, PROVIDE REFERENCE TO AT LEAST 4 WITNESS MONUMENTS OR, IF THE LOCATION IS WITHIN A MUNICIPALITY, TO AT LEAST 2 WITNESS MONUMENTS. (WITNESS MONUMENTS SHALL BE MADE OF CONCRETE, NATURAL STONE, IRON OR OTHER EQUALLY DURABLE MATERIAL) DESCRIBE WITNESS MONUMENTS

(D) SHOW A PLAN VIEW DRAWING, DEPICTING THE RELEVANT MONUMENTS AND REFERENCE TIES, WHICH IS SUFFICIENTLY DETAILED TO ENABLE ACCURATE RELOCATION OF THE CORNER MONUMENT IF IT IS DISTURBED.



- 3/4" Dia x rebar found (previous tie)
- ⊕ Found 3/4" dia rebar, set 2" pipe with brass cap Lunde monument
- ⊥ Vernon County Survey Marker Sign on steel channel post 1' south of corner

NOT TO SCALE

# VERNON COUNTY

## CERTIFIED U.S. PUBLIC LAND SURVEY MONUMENT RECORD

### RECOVERY PROCEDURES:

(E) A DESCRIPTION OF ANY RECORD EVIDENCE, MONUMENT EVIDENCE, OCCUPATIONAL EVIDENCE, TESTIMONIAL EVIDENCE OR ANY OTHER MATERIAL EVIDENCE CONSIDERED BY THE SURVEYOR, AND WHETHER THE MONUMENT WAS FOUND OR PLACED;

**CORNER HISTORY:**

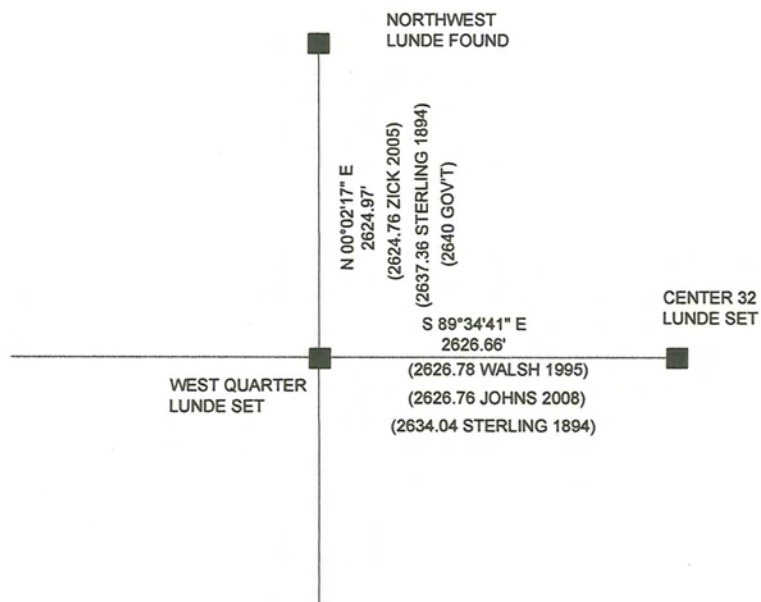
ORIGINAL GOV'T SURVEY, ALFRED BROWN, 1846  
 1894 STERLING FOUND GOV CORNER DURING SURVEY TO SUBDIVIDE PARTS OF SECTIONS 32 AND 33  
 1995 WALSH PLAT OF SURVEY IN SECTION 32 AND TIE SHEET FOR SAME SET 3/4" REBAR AT OCCUPATION  
 2005 ZICK FOUND 3/4" REBAR ON SURVEY IN SECTIONS 30 & 31  
 2008 JOHNS FOUND 3/4" REBAR DURING A SURVEY IN SECTION 32

I LOCATED A 3/4" REBAR AND PREVIOUS TIES FROM 1995 WALSH TIE SHEET. BASED ON PRIOR DOCUMENTATION AND ACCEPTANCE OF CORNER BY OTHERS AS NOTED ABOVE, I MONUMENTED AND PERPETUATED AS SHOWN HEREON.

(F) WHETHER THE CORNER WAS RESTORED THROUGH ACCEPTANCE OF AN OBLITERATED EVIDENCE LOCATION OR A FOUND PERPETUATED LOCATION;

FOUND PERPETUATED LOCATION

(G) WHETHER THE CORNER WAS REESTABLISHED THROUGH LOST-CORNER PROPORTIONATE METHODS; IF SO, S HOW THE DIRECTIONS AND DISTANCES TO OTHER PUBLIC LAND SURVEY CORNERS WHICH WERE USED AS EVIDENCE OR USED FOR PROPORTIONING IN DETERMINING THE CORNER LOCATION;



### SURVEYOR'S CERTIFICATE: CHAPTER 7.08 (3) (I)

THE UNDERSIGNED HEREBY CERTIFIES THAT THE U.S. PUBLIC LAND SURVEY MONUMENT RECORD SHOWN WAS DETERMINED BY THEM OR UNDER THEIR DIRECTION AND IS CORRECT AND COMPLETE TO THE BEST OF THEIR KNOWLEDGE AND BELIEF.



*Sean M. Walsh*

9/17/15

DATE CERTIFIED

**VERNON COUNTY COORDINATE FORM**  
Addendum To  
**U.S. PUBLIC LAND SURVEY MONUMENT RECORD**

INSTRUCTIONS: THIS RECORD FORM SHOULD BE USED WHEN COORDINATES ARE PROVIDED FOR A PUBLIC LAND SURVEY CORNER AND SHALL INCLUDE ALL OF THE FOLLOWING ELEMENTS (A-D) UNLESS INDICATED AS OPTIONAL

(A) IDENTIFY THE CORNER BY REFERENCE TO THE U.S. PUBLIC LAND SURVEY SYSTEM IN DIAGRAM AT RIGHT

(B) COORDINATES:

VERNON COUNTY (U.S. FEET)

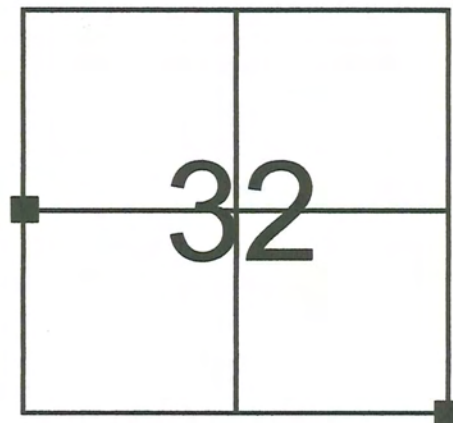
NORTHING (Y): 150,514.776  
EASTING (X): 765,030.054

GEOGRAPHIC (DMS to 4 decimal places):

LATITUDE: 43°33'36.2182" (N)  
LONGITUDE: 90°39'04.2824" (W)

HORIZONTAL DATUM: NAD 83 (2011)

■ = CORNER MONUMENT



T 13 N, R 2 E/W

ORTHOMETRIC HT (U.S. ft): \_\_\_\_\_ (optional)

VERTICAL DATUM: \_\_\_\_\_

METHOD USED TO COMPUTE COORDINATES (check as applicable):

- RTK Observations from WISCORS Control  
 RTK Observations from Passive WI. Ht. Modernization Control  
 Static Baselines  
 OPUS-RS Solution  OPUS-S Solution  
 Combination of conventional procedures with GPS observations to set temporary control  
 Single Angle Measurement  Closed Traverse Loop

BASE CONTROL USED FOR COORDINATE COMPUTATION:

Station Name	Station Coordinates	Date/Time
STARK S GPS PID DH5161	N: 148,109.956 E: 772,907.4853	7/8/2015 6:58 AM & 7/20/2015 10:05 AM
MA BRENNAN GPS PID DH5160	N: 148,602.507 E: 748,776.104	SAME
STARK E GPS PID DH5147	N: 159,415.294 E: 789,358.871	2/8/2015 9:55 AM & 7/20/2015 12:50 PM
STARK W GPS PID DH5162	N: 169,096.441 E: 760,343.022	SAME

\* Please List Any Additional Control Stations Used/Notes/Information on Back of Form

(C) REASON FOR COORDINATE SUBMITTAL (check one):

- Being Filed With a New U.S. PLS Monument Record  
 -Or -  
 To Correct the Coordinates Listed on a Previously Filed PLS Monument Record  
 To Provide Coordinates for a Previously Filed PLS Monument Record without Coordinates  
 To Provide Supplemental Coordinates for Previously Filed U.S. Public Land Survey Monument Record  
 R.L.S. & DATE OF PLS MONUMENT RECORD: \_\_\_\_\_

(D) AGENT(S) PERFORMING GPS OBSERVATIONS & COORDINATE COMPUTATION

- 1) SEAN M. WALSH, PLS  
 2) \_\_\_\_\_

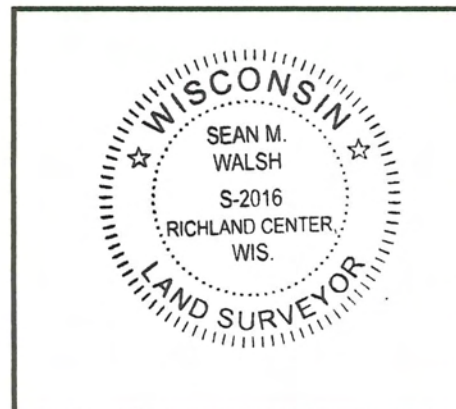
I, SEAN M. WALSH, PLS

CERTIFY THAT THE COORDINATES PROVIDED ON THIS RECORD WERE DETERMINED BY ME OR UNDER MY DIRECTION AND CONTROL AND THAT THIS COORDINATE SUBMISSION FORM IS CORRECT AND COMPLETE TO THE BEST OF MY KNOWLEDGE AND BELIEF.

SIGNATURE

DATE

Seal



*Sean M. Walsh* 9/17/15



# VERNON COUNTY GOVERNMENT CORNER RECORD

WEST 1/4 CORNER, SECTION 32, TOWNSHIP 13 NORTH, RANGE 2 WEST  
TOWN, CITY OR VILLAGE OF STARK

TYPE OF MONUMENT: 3/4" X 24" IRON ROD ELEVATION - M.S.L. DATUM \_\_\_\_\_

STATE PLANE COORDINATES: N \_\_\_\_\_

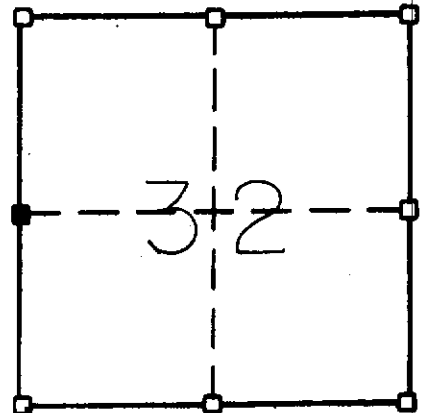
WISCONSIN SOUTH ZONE E \_\_\_\_\_

WITNESSES TO CORNER LOCATION

Sean M. Walsh

Christopher G. Reedy

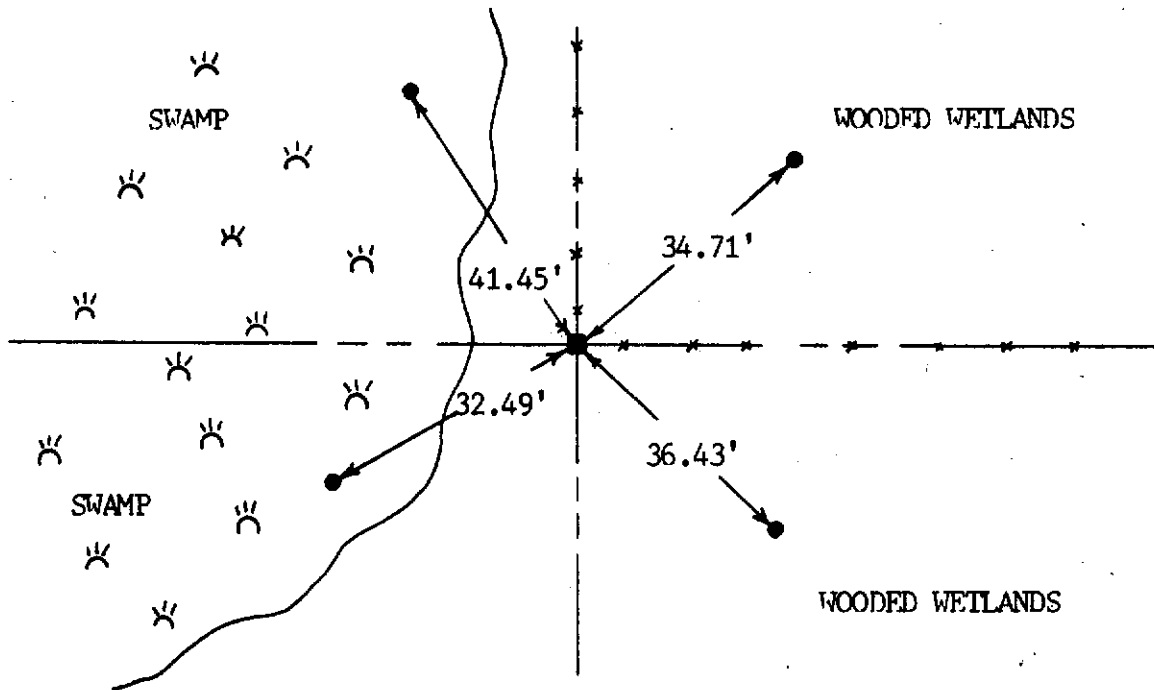
SECTION 32, T 13 N, R 2 W  
TOWN OF STARK



■ - CORNER LOCATION  
● - 3/4" Iron Rod Set

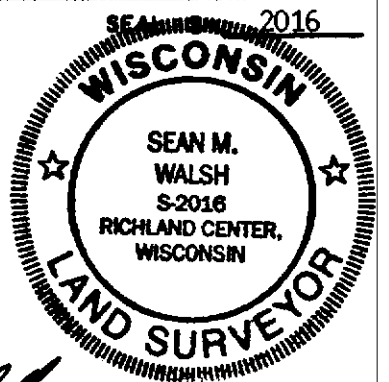
NORTH

TIE SKETCH  
(SHOW ALL HELPFUL FEATURES)



SURVEYOR'S CERTIFICATE  
STATE OF WISCONSIN)  
COUNTY ) SS

I Sean M. Walsh, DO HEREBY CERTIFY THAT I have re-  
established this corner at the location of physical occupation as  
the only acceptable evidence and that this information is correct  
to the best of my information and belief.



DATED THIS 10 DAY OF AUG., 19 95

Sean M. Walsh  
REGISTERED LAND SURVEYOR

CORNER CODE

7