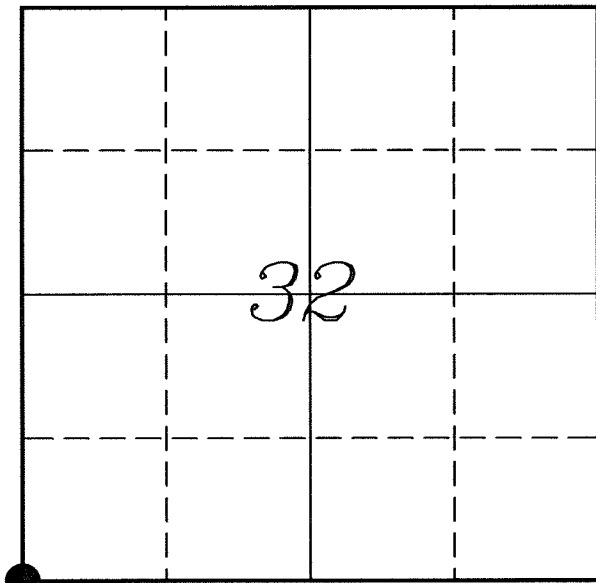


---

# U. S. PUBLIC LAND SURVEY MONUMENT RECORD

---

## SECTION 32, T13N, R2W, TOWN OF STARK VERNON COUNTY, WISCONSIN



LOCATION OF LANDMARK

Crew: Laurence E Johns III  
Larry Handschy

Date: 19 March 2009

VERNON COUNTY COORDINATE SYSTEM	
Northing	147878.491
Easting	765027.369
Elevation	
TYPE OF LANDMARK:	
Set 1 1/4" Iron Rod	
BEARINGS ARE REFERENCED TO:	
Vernon County Coordinates	

---

*Describe any record evidence, monument evidence, testimonial evidence or any other material evidence you considered and whether the monument was found or restored through acceptance of an obliterated evidence location.*

No bearing trees from the original government survey or Sterling's survey were located, as this location lands in the center of Old Hwy '131'.

Found the Richland County monument set by Sean Walsh.

Found a nail in the pavement at the offset distance from the NW Corner of Section 5. May have been put there by Sean Walsh during his survey in 1995.

Accepted the line between the NW & N 1/4 Corners of Section 5 as being the South line of Section 32. Went the Government offset distance from the NW Corner of Section 5 and accepted this location as the best available evidence of the original government corner.

---

*Describe or show any material discrepancy between the location of the restored corner and that of the corner previously restored or re-established.*

J E Whitcher established this corner during the original government survey in April 1845.

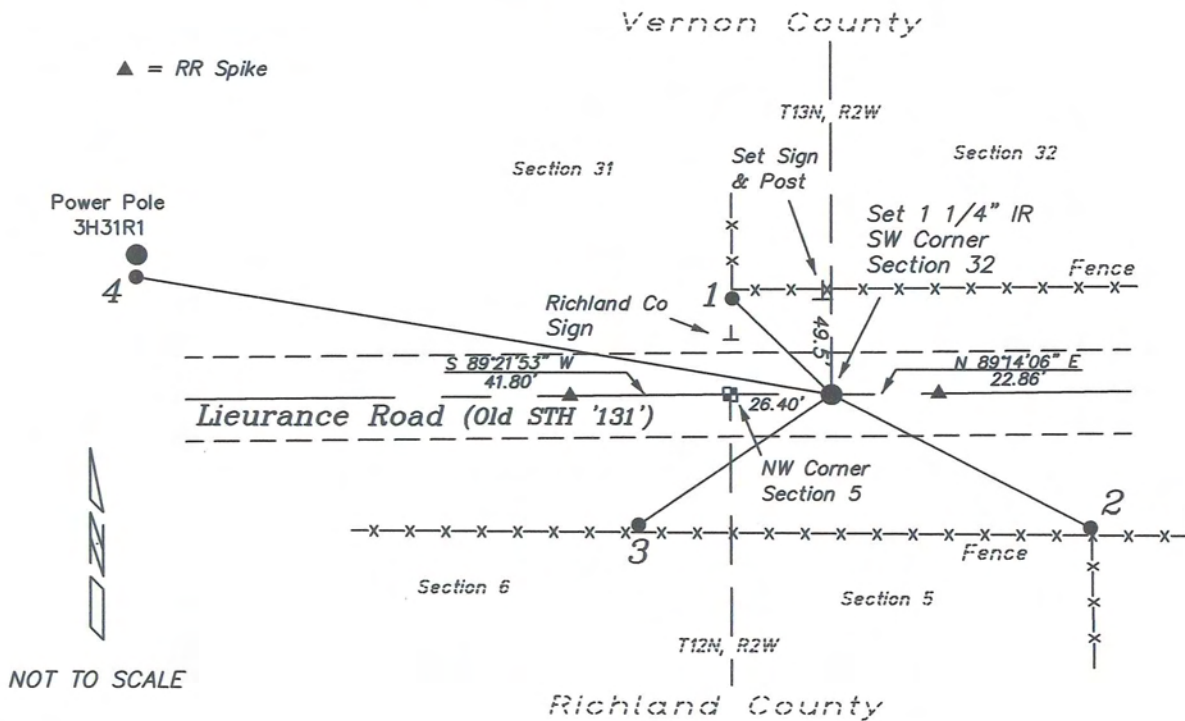
C M Sterling was at this corner during a survey of Sections 32 & 33, in March 1894. He found the original government corner.

Sean Walsh established the North Line of Section 5, T12N, R2W, in August 1991. He set Richland County monuments along this line. He did not set a monument at the SW Corner of Section 32.

Sean Walsh performed a survey in the NW1/4 of Section 32, in August 1995. He established the W 1/4 corner during this survey.

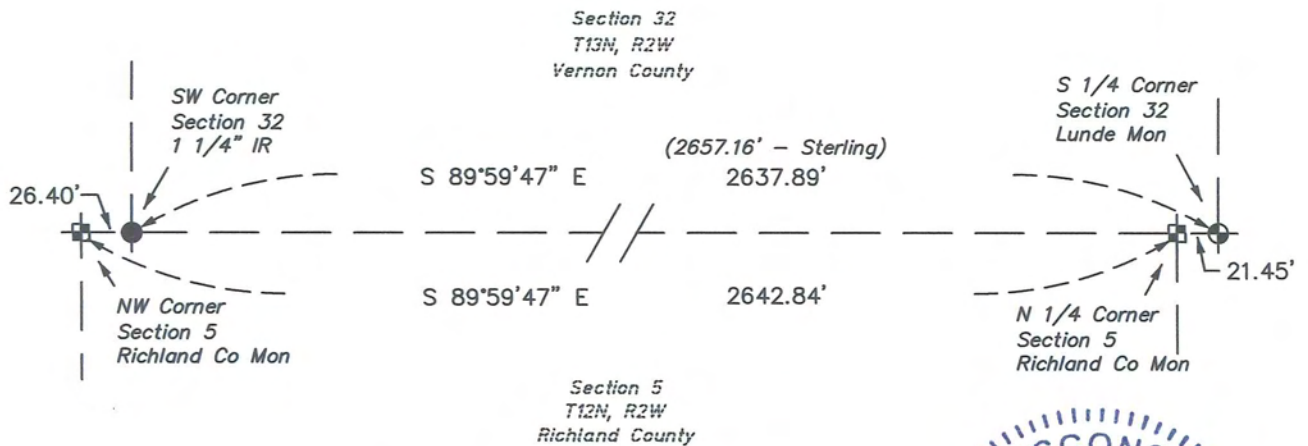
# RECORD OF DURABLE WITNESS MONUMENTS

NO	DESCRIPTION	BEARING	DISTANCE
1	Set 3/4" x 18" Iron Rod South Side of Fence Post	N 45°45'06" W	36.16'
2	Set 3/4" x 18" Iron Rod North Side of Fence Corner	S 62°46'35" E	75.84'
3	Set 3/4" x 18" Iron Rod In Right-of-Way Fence	S 55°54'57" W	60.81'
4	Set 3/4" x 18" Iron Rod South Side of Power Pole #3H31R1	N 80°23'52" W	183.83'

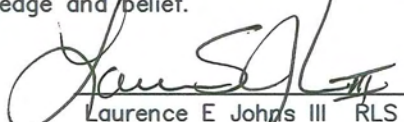


## PLAN VIEW DRAWING OF REFERENCE TIES

Map Showing Distance And Direction To Other Public Land Survey Corners Used For Re-Establishing The Corner



I, Laurence E Johns III RLS 2804, Registered Land Surveyor, hereby certify that the corner location shown on this record was determined by me or under my direction and control, and that this U.S. Public Land Survey Monument Record is correct and complete to the best of my knowledge and belief.

  
 Laurence E Johns III RLS 2804  
 Eagle Ridge Surveying  
 PO Box 213  
 Wilton, Wisconsin  
 19 March 2009

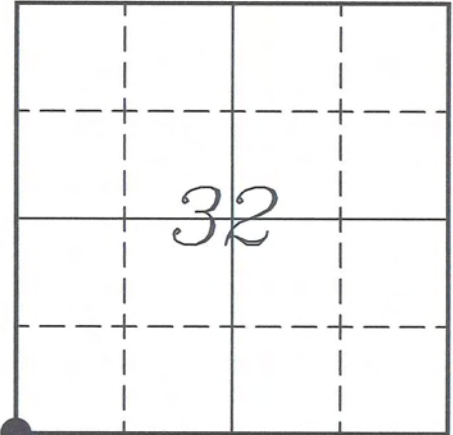


**VERNON COUNTY COORDINATE SUBMISSION FORM**  
 "As An Addendum To"  
**VERNON COUNTY**  
**CERTIFIED U.S. PUBLIC LAND SURVEY MONUMENT RECORD**

INSTRUCTIONS: THIS RECORD FORM SHOULD BE USED WHEN COORDINATES ARE PROVIDED FOR A PUBLIC LAND SURVEY CORNER AND SHALL INCLUDE ALL OF THE FOLLOWING ELEMENTS (A-D)

(A) IDENTIFY THE CORNER BY REFERENCE TO THE U.S. PUBLIC LAND SURVEY SYSTEM IN DIAGRAM AT RIGHT

● = CORNER MONUMENT



(B) COORDINATES:

GEOGRAPHIC (Degrees Minutes Seconds)

LATITUDE: 43° 33' 10.1828" N

LONGITUDE: 90° 39' 04.3757" W

ELLIPSOID HT (m): \_\_\_\_\_

DATUM: NAD 1983 (2007)

GEOID99 ADJ: -33.444

ORTHOMETRIC HT: \_\_\_\_\_

VERNON COUNTY (U.S. FEET)

Coord Quality (+/-)

NORTHING (Y): 147878.491 \_\_\_\_\_

EASTING (X): 765027.369 \_\_\_\_\_

GPS METHOD USED TO COMPUTE COORDINATES (check as applicable)

- RTK Observations     Static Baselines     OPUS-RS Solution     OPUS-S Solution  
 Combination of GPS Observations & Conventional Procedures

Was a Least Squares Adjustment Used to Compute Coordinates? Yes /  No

BASE CONTROL USED FOR COORDINATE COMPUTATION

Station Name	Station Coordinates	Date/Time
<u>OPUS Control Station</u>	<u>43° 33' 22.5597" N 90° 39' 16.0419" W</u> <u>N - 149130.398 E - 764166.270</u>	<u>01/19/2009 - 15:39</u>
<u>Same</u>	_____	<u>03/17/2009 - 13:44</u>

(C) REASON FOR COORDINATES SUBMITTAL (check one)

- Being Filed With a New U.S. PLS Monument Record  
 To Correct the Coordinates Listed on a Previously Filed PLS Monument Record  
 To Provide Coordinates for Previously Filed PLS Monument Record without Coordinates  
 To Provide Supplemental Coordinates for a Previously Filed PLS Monument Record

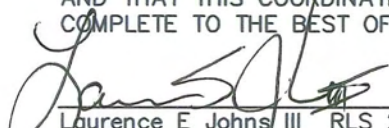
MOST RECENT PLS MONUMENT RECORD DATE:

R.L.S. WHO CREATED MOST RECENT PLS MONUMENT RECORD:

(D) AGENT(S) PERFORMING GPS OBSERVATIONS & COORDINATE COMPUTATION

- 1) LAURENCE E JOHNS III  
 2) \_\_\_\_\_

I, LAURENCE E JOHNS III RLS 2804, REGISTERED LAND SURVEYOR, HEREBY CERTIFY THAT THE COORDINATES PROVIDED ON THIS RECORD WERE DETERMINED BY ME OR UNDER MY DIRECTION AND CONTROL AND THAT THIS COORDINATE SUBMISSION FORM IS CORRECT AND COMPLETE TO THE BEST OF MY KNOWLEDGE AND BELIEF.

  
 Laurence E Johns III RLS 2804  
 Eagle Ridge Surveying  
 PO Box 213  
 Wilton, Wisconsin  
 19 March 2009

