

# VERNON COUNTY

## CERTIFIED U.S. PUBLIC LAND SURVEY MONUMENT RECORD

INSTRUCTIONS: THIS RECORD SHALL SHOW THE LOCATION OF THE CORNER AND SHALL INCLUDE ALL OF THE FOLLOWING ELEMENTS (A-1)

(A) IDENTIFY THE CORNER BY REFERENCE TO THE U.S. PUBLIC LAND SURVEY SYSTEM  
**NORTH QUARTER CORNER SECTION 32, T13N, R2W**

- ⊕ = CORNER MONUMENT RESTORED - FOUND 1.25" OD IRON PIPE, REPLACE WITH 2" IRON PIPE WITH BRASS CAP LUNDE MONUMENT  
 WITNESSES TO CORNER LOCATION  
 1) SEAN M. WALSH  
 2)  
 3)

VERNON COUNTY COORDINATES  
 NORTHING: 153,115.128  
 EASTING: 767,670.741  
 BASIS OF BEARINGS AND COORDINATES:  
 WISCRS VERNON, NAD 83(2011)



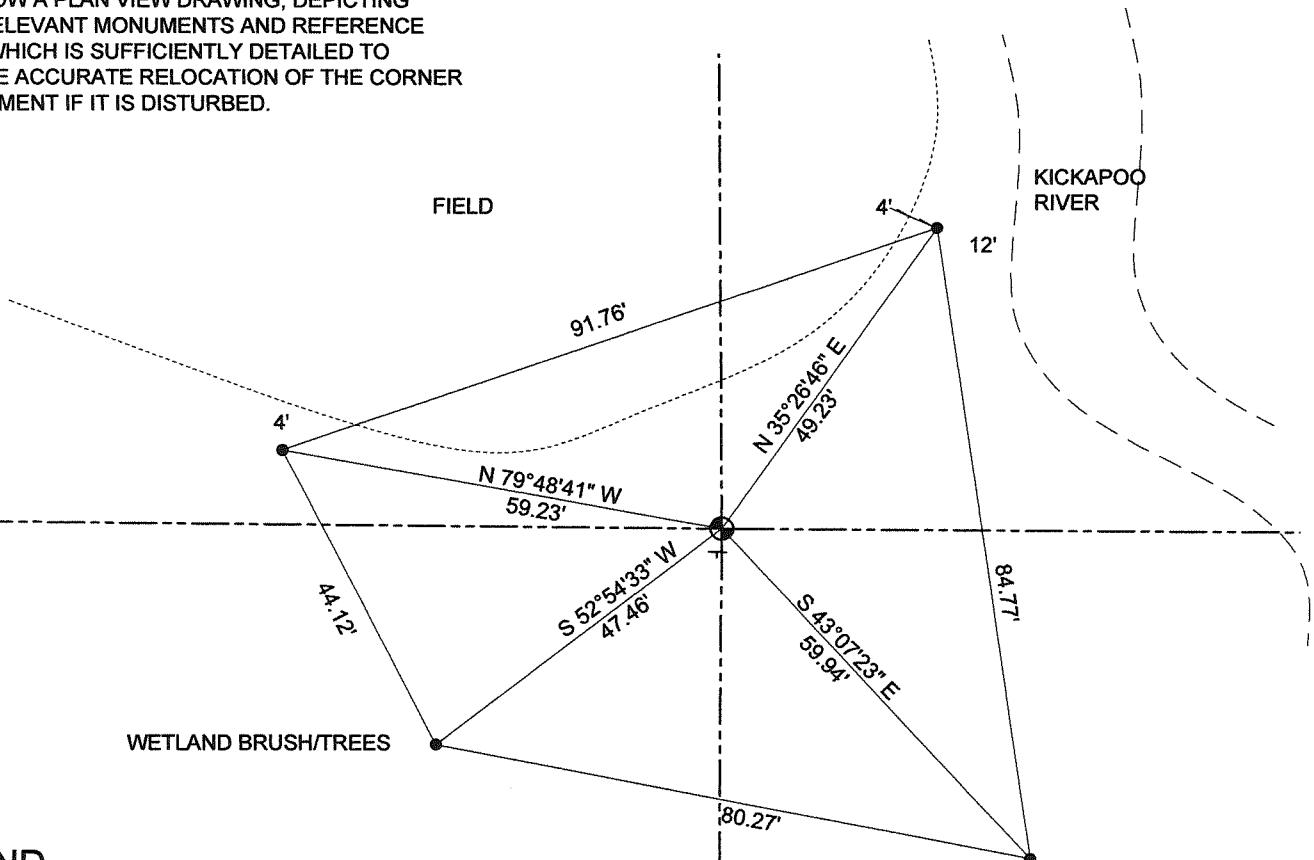
**NORTH QUARTER CORNER**

**SECTION 32 , TOWN 13 NORTH, RANGE 2 WEST**



(C) IN THE PLAN VIEW DRAWING BELOW, PROVIDE REFERENCE TO AT LEAST 4 WITNESS MONUMENTS OR, IF THE LOCATION IS WITHIN A MUNICIPALITY, TO AT LEAST 2 WITNESS MONUMENTS. (WITNESS MONUMENTS SHALL BE MADE OF CONCRETE, NATURAL STONE, IRON OR OTHER EQUALLY DURABLE MATERIAL) DESCRIBE WITNESS MONUMENTS

(D) SHOW A PLAN VIEW DRAWING, DEPICTING THE RELEVANT MONUMENTS AND REFERENCE TIES, WHICH IS SUFFICIENTLY DETAILED TO ENABLE ACCURATE RELOCATION OF THE CORNER MONUMENT IF IT IS DISTURBED.



**LEGEND**

- 3/4" Dia x 18" iron rebar set as tie
- ⊕ Found 1.25" od iron pipe, set 2" iron pipe with brass cap Lunde monument
- ⊥ Vernon County Survey Marker Sign on steel channel post set 1' south

WETLAND BRUSH/TREES

NOT TO SCALE

# VERNON COUNTY

## CERTIFIED U.S. PUBLIC LAND SURVEY MONUMENT RECORD

### RECOVERY PROCEDURES:

(E) A DESCRIPTION OF ANY RECORD EVIDENCE, MONUMENT EVIDENCE, OCCUPATIONAL EVIDENCE, TESTIMONIAL EVIDENCE OR ANY OTHER MATERIAL EVIDENCE CONSIDERED BY THE SURVEYOR, AND WHETHER THE MONUMENT WAS FOUND OR PLACED;

**CORNER HISTORY:**

ORIGINAL GOV'T SURVEY, ALFRED BROWN, 1846

1891 STERLING SHOWS GOV'T CORNER LOST ON SURVEY OF SECTION 29, REESTABLISHED AT MIDPOINT OF SECTION LINE AND NOTED TWO TREES WHICH NO LONGER REMAIN.

1894 STERLING REPEATS 1891 DIMENSIONS ON SURVEY OF SECTION 32, NO ADDITIONAL DATA SHOWN

1994 WALSH FINDS AND ACCEPTS 1" IRON PIPE OF UNDOCUMENTED ORIGIN ON SURVEY IN SECTIONS 29 AND 32, FILED TIE SHEET OF SAME

1995 WALSH FINDS AND ACCEPTS 1" IRON PIPE ON SURVEY IN SECTION 32

2008 JOHNS III FINDS AND ACCEPTS 1" IRON PIPE AND ACCEPTS ON SURVEY IN SECTION 32

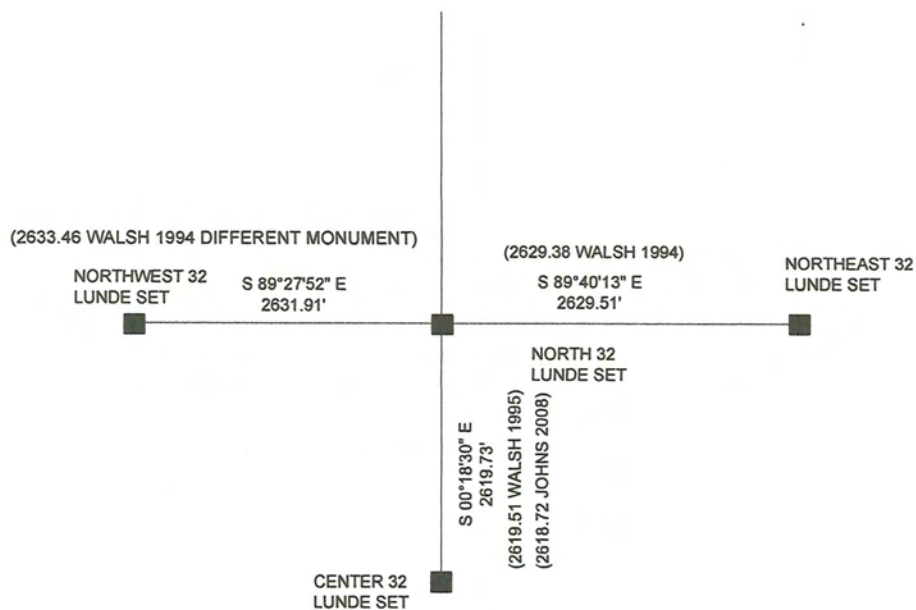
2009 K. LORD FINDS AND ACCEPTS "IRON PIPE" ON SURVEY IN SECTION 29

I LOCATED A 1.25" OD IRON PIPE AT THIS LOCATION AS DOCUMENTED ABOVE. BASED ON MY PRIOR USE AND SUBSEQUENT ACCEPTANCE BY JOHNS, I ACCEPT THIS CORNER AS THE BEST AVAILABLE EVIDENCE, MONUMENT AND PERPETUATE AS SHOWN HEREON.

(F) WHETHER THE CORNER WAS RESTORED THROUGH ACCEPTANCE OF AN OBLITERATED EVIDENCE LOCATION OR A FOUND PERPETUATED LOCATION;

FOUND PERPETUATED LOCATION

(G) WHETHER THE CORNER WAS REESTABLISHED THROUGH LOST-CORNER PROPORTIONATE METHODS; IF SO, SHOW THE DIRECTIONS AND DISTANCES TO OTHER PUBLIC LAND SURVEY CORNERS WHICH WERE USED AS EVIDENCE OR USED FOR PROPORTIONING IN DETERMINING THE CORNER LOCATION;



### SURVEYOR'S CERTIFICATE: CHAPTER 7.08 (3) (I)

THE UNDERSIGNED HEREBY CERTIFIES THAT THE U.S. PUBLIC LAND SURVEY MONUMENT RECORD SHOWN WAS DETERMINED BY THEM OR UNDER THEIR DIRECTION AND IS CORRECT AND COMPLETE TO THE BEST OF THEIR KNOWLEDGE AND BELIEF.



*Sean Walsh*

9/17/15

DATE CERTIFIED



**VERNON COUNTY COORDINATE FORM**  
Addendum To  
**U.S. PUBLIC LAND SURVEY MONUMENT RECORD**

INSTRUCTIONS: THIS RECORD FORM SHOULD BE USED WHEN COORDINATES ARE PROVIDED FOR A PUBLIC LAND SURVEY CORNER AND SHALL INCLUDE ALL OF THE FOLLOWING ELEMENTS (A-D) UNLESS INDICATED AS OPTIONAL

(A) IDENTIFY THE CORNER BY REFERENCE TO THE U.S. PUBLIC LAND SURVEY SYSTEM IN DIAGRAM AT RIGHT

■ = CORNER MONUMENT



T 13 N, R 2 E/W

(B) COORDINATES:

VERNON COUNTY (U.S. FEET)

NORTHING (Y): 153,115.128  
EASTING (X): 767,670.741

GEOGRAPHIC (DMS to 4 decimal places):

LATITUDE: 43°34'01.8557" (N)  
LONGITUDE: 90°38'28.3608" (W)

HORIZONTAL DATUM: NAD 83 (2011)

ORTHOMETRIC HT (U.S. ft): \_\_\_\_\_ (optional)

VERTICAL DATUM: \_\_\_\_\_

METHOD USED TO COMPUTE COORDINATES (check as applicable):

- RTK Observations from WISCORS Control  
 RTK Observations from Passive WI. Ht. Modernization Control  
 Static Baselines  
 OPUS-RS Solution  OPUS-S Solution  
 Combination of conventional procedures with GPS observations to set temporary control  
 Single Angle Measurement  Closed Traverse Loop

BASE CONTROL USED FOR COORDINATE COMPUTATION:

Station Name	Station Coordinates	Date/Time
STARK S GPS PID DH5161	N: 148,109.956 E: 772,907.4853	7/23/2015 9:17 AM & 8/17/2015 12:36 PM
MA BRENNAN GPS PID DH5160	N: 148,602.507 E: 748,776.104	SAME
STARK E GPS PID DH5147	N: 159,415.294 E: 789,358.871	SAME
STARK W GPS PID DH5162	N: 169,096.441 E: 760,343.022	SAME

\* Please List Any Additional Control Stations Used/Notes/Information on Back of Form

(C) REASON FOR COORDINATE SUBMITTAL (check one):

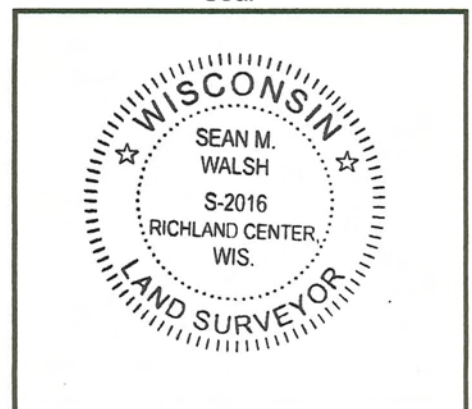
- Being Filed With a New U.S. PLS Monument Record  
 -Or-  
 To Correct the Coordinates Listed on a Previously Filed PLS Monument Record  
 To Provide Coordinates for a Previously Filed PLS Monument Record without Coordinates  
 To Provide Supplemental Coordinates for Previously Filed U.S. Public Land Survey Monument Record  
 R.L.S. & DATE OF PLS MONUMENT RECORD: \_\_\_\_\_

(D) AGENT(S) PERFORMING GPS OBSERVATIONS & COORDINATE COMPUTATION

- 1) SEAN M. WALSH, PLS  
 2) \_\_\_\_\_

I, SEAN M. WALSH, PLS  
 CERTIFY THAT THE COORDINATES PROVIDED ON THIS RECORD WERE DETERMINED BY ME OR UNDER MY DIRECTION AND CONTROL AND THAT THIS COORDINATE SUBMISSION FORM IS CORRECT AND COMPLETE TO THE BEST OF MY KNOWLEDGE AND BELIEF.

Seal



Sean M. Walsh 9/17/15  
 SIGNATURE DATE

JUN 21 1994

# GOVERNMENT CORNER RECORD

S 1/4 CORNER, SECTION 29, TOWNSHIP 13 NORTH, RANGE 2 ~~EAST~~ - WEST,  
TOWN, CITY OR VILLAGE OF STARK

TYPE OF MONUMENT: 1" Iron Pipe found ELEVATION - M.S.L. DATUM

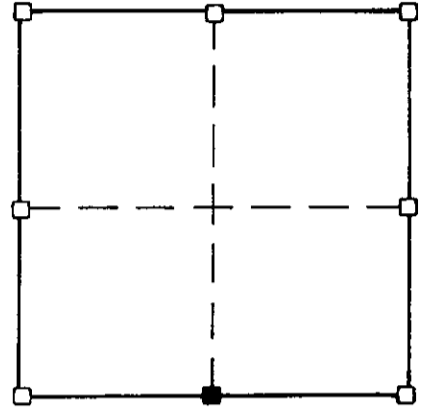
WITNESSES TO CORNER LOCATION

SECTION 29, T 13 N, R 2 ~~EW~~

Sean M. Walsh

Scott H. Chyko

TOWN OF Stark



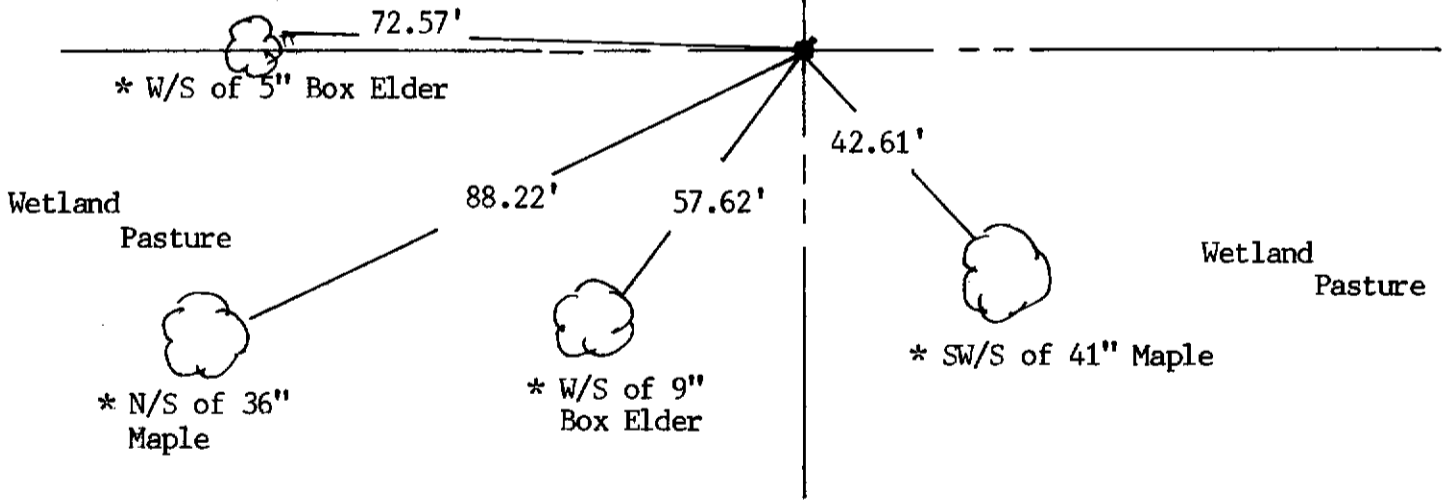
NORTH

TIE SKETCH  
(SHOW ALL HELPFUL FEATURES)

\* Ties are 60D Pole Spikes in blaze as noted.

Wetlands

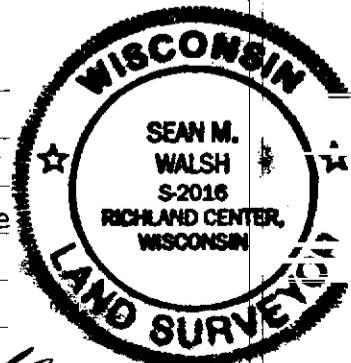
Wetlands



SURVEYOR'S CERTIFICATE

SEAL S. 2016

I, Sean M. Walsh, DO HEREBY CERTIFY THAT I have accepted and perpetuated the above corner in accordance with the information contained hereon and that this information is correct to the best of my information, knowledge and belief. I located a 1" diameter iron pipe and accepted this location as the best available evidence.



DATED THIS 31 DAY OF MAY, 1994

REGISTERED LAND SURVEYOR

10