

# VERNON COUNTY

## CERTIFIED U.S. PUBLIC LAND SURVEY MONUMENT RECORD

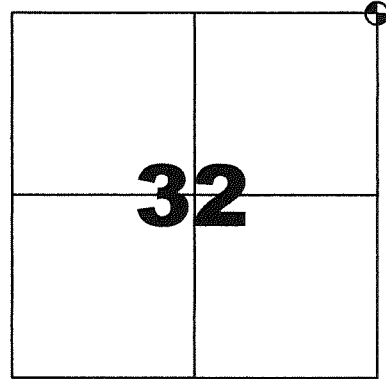
INSTRUCTIONS: THIS RECORD SHALL SHOW THE LOCATION OF THE CORNER AND SHALL INCLUDE ALL OF THE FOLLOWING ELEMENTS (A-1)

(A) IDENTIFY THE CORNER BY REFERENCE TO THE U.S. PUBLIC LAND SURVEY SYSTEM  
**NORTHEAST CORNER SECTION 32, T13N, R2W**

- ⊕ = CORNER MONUMENT RESTORED -FOUND 3/4" DIA IRON REBAR, REPLACED WITH 2" IRON PIPE WITH BRASS CAP  
 LUNDE MONUMENT  
 WITNESSES TO CORNER LOCATION  
 1) SEAN M. WALSH  
 2)  
 3)

VERNON COUNTY COORDINATES  
 NORTHING: 153,099.996  
 EASTING: 770,300.203

BASIS OF BEARINGS AND COORDINATES:  
 WISCRS VERNON, NAD 83(2011)



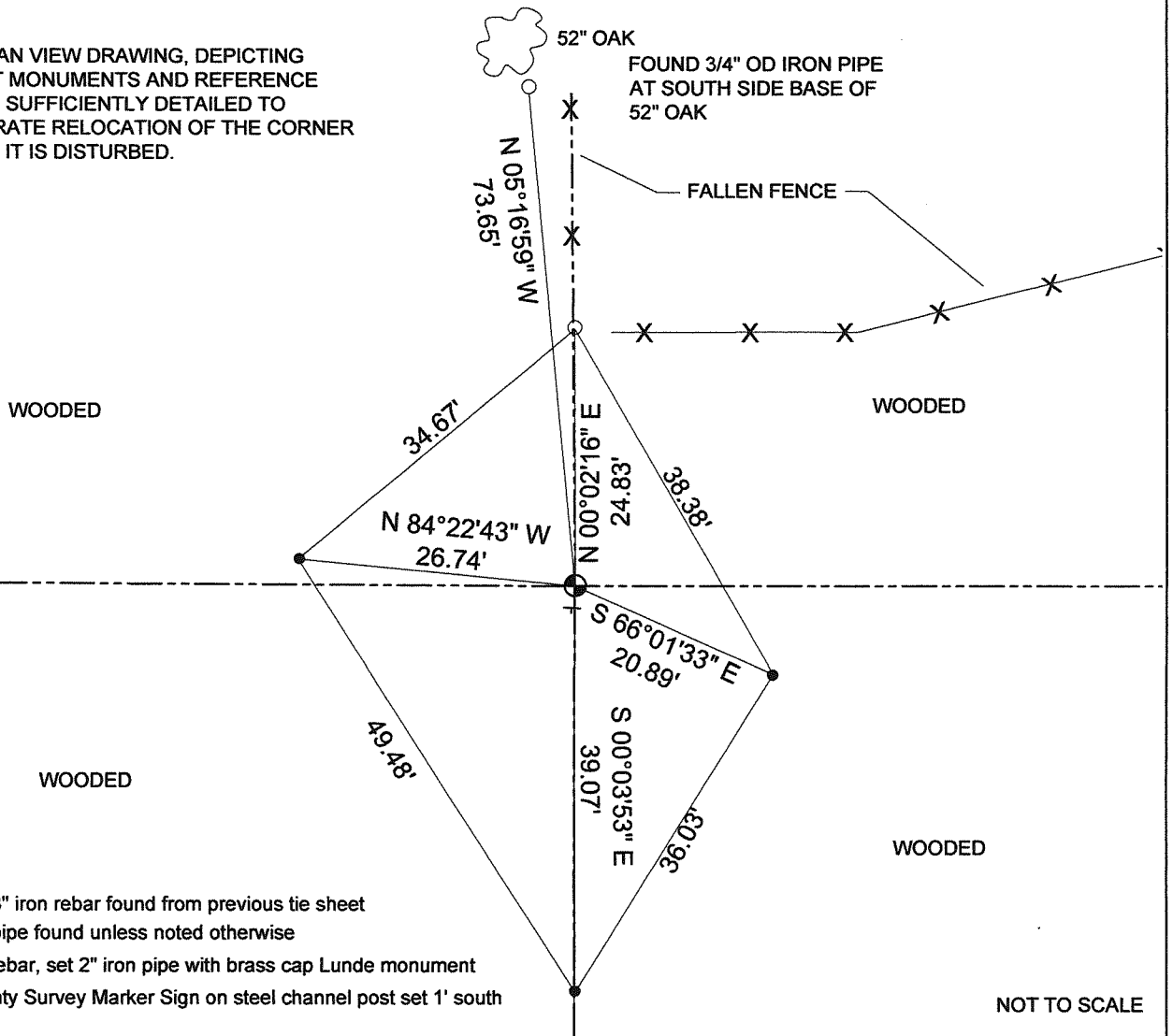
**NORTHEAST CORNER**

**SECTION 32 , TOWN 13 NORTH, RANGE 2 WEST**



(C) IN THE PLAN VIEW DRAWING BELOW, PROVIDE REFERENCE TO AT LEAST 4 WITNESS MONUMENTS OR, IF THE LOCATION IS WITHIN A MUNICIPALITY, TO AT LEAST 2 WITNESS MONUMENTS. (WITNESS MONUMENTS SHALL BE MADE OF CONCRETE, NATURAL STONE, IRON OR OTHER EQUALLY DURABLE MATERIAL) DESCRIBE WITNESS MONUMENTS

(D) SHOW A PLAN VIEW DRAWING, DEPICTING THE RELEVANT MONUMENTS AND REFERENCE TIES, WHICH IS SUFFICIENTLY DETAILED TO ENABLE ACCURATE RELOCATION OF THE CORNER MONUMENT IF IT IS DISTURBED.



**LEGEND**

- 3/4" Dia x 18" iron rebar found from previous tie sheet
- 1" Dia iron pipe found unless noted otherwise
- ⊕ Found 3/4" rebar, set 2" iron pipe with brass cap Lunde monument
- ⊕ Vernon County Survey Marker Sign on steel channel post set 1' south

NOT TO SCALE

# VERNON COUNTY

## CERTIFIED U.S. PUBLIC LAND SURVEY MONUMENT RECORD

### RECOVERY PROCEDURES:

(E) A DESCRIPTION OF ANY RECORD EVIDENCE, MONUMENT EVIDENCE, OCCUPATIONAL EVIDENCE, TESTIMONIAL EVIDENCE OR ANY OTHER MATERIAL EVIDENCE CONSIDERED BY THE SURVEYOR, AND WHETHER THE MONUMENT WAS FOUND OR PLACED;

**CORNER HISTORY:**

ORIGINAL GOV'T SURVEY, ALFRED BROWN, 1846  
 1867 HC JOSEPH MEASURED TO CORNER FOR SURVEY OF SECTION 29, NO MONUMENTATION OR WITNESSES NOTED  
 1878 KNOWER MEASURED TO CORNER FOR SURVEY OF SECTION 28, NO MONUMENTATION OR WITNESSES NOTED  
 1894 STERLING FOUND GOV'T CORNER FOR SURVEY OF SECTIONS 32 AND 33, NO OTHER MONUMENTATION OR WITNESSES NOTED.  
 1994 WALSH FOUND 3/4" REBAR SURVEY IN SECTIONS 29 AND 32 AND TIE SHEET OF SAME  
 2005 CARROLL FOUND 3/4" REBAR FOR SURVEY IN SECTION 33

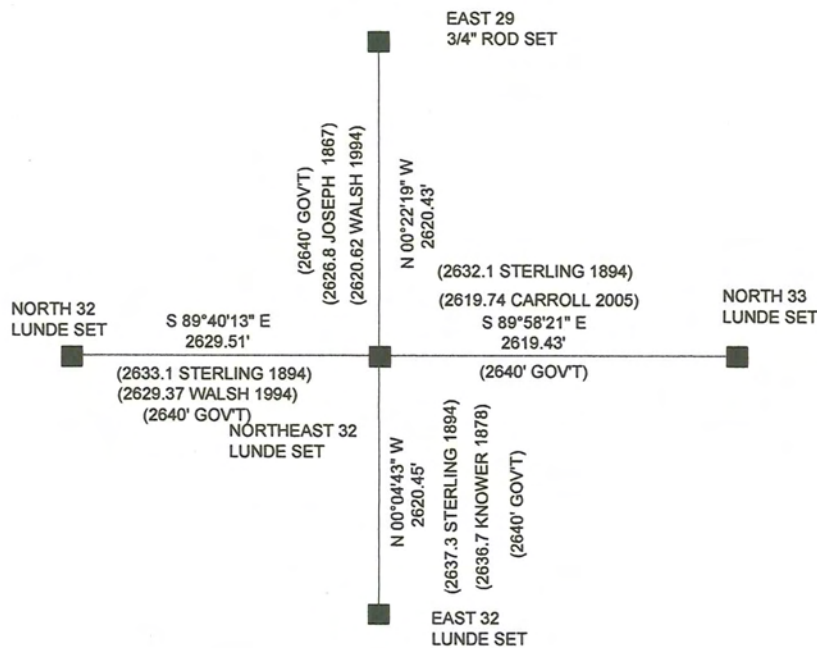
I FIND NO EVIDENCE OF THE ORIGINAL GOV'T BEARING TREES

I LOCATED A 3/4" DIA IRON REBAR AS PREVIOUSLY DOCUMENTED BY MYSELF AND ACCEPTED BY CARROL. I ACCEPT THIS LOCATION AS THE BEST AVAILABLE EVIDENCE ACCORDING TO DOCUMENTATION PROVIDED ABOVE. I HAVE MONUMENTED AND PERPETUATED AS SHOWN HEREON.

(F) WHETHER THE CORNER WAS RESTORED THROUGH ACCEPTANCE OF AN OBLITERATED EVIDENCE LOCATION OR A FOUND PERPETUATED LOCATION;

FOUND PERPETUATED LOCATION

(G) WHETHER THE CORNER WAS REESTABLISHED THROUGH LOST-CORNER PROPORTIONATE METHODS; IF SO, S HOW THE DIRECTIONS AND DISTANCES TO OTHER PUBLIC LAND SURVEY CORNERS WHICH WERE USED AS EVIDENCE OR USED FOR PROPORTIONING IN DETERMINING THE CORNER LOCATION;



### SURVEYOR'S CERTIFICATE: CHAPTER 7.08 (3) (I)

THE UNDERSIGNED HEREBY CERTIFIES THAT THE U.S. PUBLIC LAND SURVEY MONUMENT RECORD SHOWN WAS DETERMINED BY THEM OR UNDER THEIR DIRECTION AND IS CORRECT AND COMPLETE TO THE BEST OF THEIR KNOWLEDGE AND BELIEF.



*Sean M. Walsh*

9/17/15  
DATE CERTIFIED



**VERNON COUNTY COORDINATE FORM**  
 Addendum To  
**U.S. PUBLIC LAND SURVEY MONUMENT RECORD**

INSTRUCTIONS: THIS RECORD FORM SHOULD BE USED WHEN COORDINATES ARE PROVIDED FOR A PUBLIC LAND SURVEY CORNER AND SHALL INCLUDE ALL OF THE FOLLOWING ELEMENTS (A-D) UNLESS INDICATED AS OPTIONAL

(A) IDENTIFY THE CORNER BY REFERENCE TO THE U.S. PUBLIC LAND SURVEY SYSTEM IN DIAGRAM AT RIGHT

■ = CORNER MONUMENT



(B) COORDINATES:

VERNON COUNTY (U.S. FEET)

NORTHING (Y): 153,099.996  
 EASTING (X): 770,300.203

GEOGRAPHIC (DMS to 4 decimal places):

LATITUDE: 43°34'01.6603" (N)  
 LONGITUDE: 90°37'52.6483" (W)

HORIZONTAL DATUM: NAD 83 (2011)

T 13 N, R 2 E(W)

ORTHOMETRIC HT (U.S. ft): \_\_\_\_\_ (optional)

VERTICAL DATUM: \_\_\_\_\_

METHOD USED TO COMPUTE COORDINATES (check as applicable):

- RTK Observations from WISCORS Control
- RTK Observations from Passive Wl. Ht. Modernization Control
- Static Baselines
- OPUS-RS Solution  OPUS-S Solution
- Combination of conventional procedures with GPS observations to set temporary control
  - Single Angle Measurement
  - Closed Traverse Loop

BASE CONTROL USED FOR COORDINATE COMPUTATION:

Station Name	Station Coordinates	Date/Time
STARK S GPS PID DH5161	N: 148,109.956 E: 772,907.4853	7/23/2015 10:37 AM & 8/21/2015 7:40 AM
MA BRENNAN GPS PID DH5160	N: 148,602.507 E: 748,776.104	SAME
STARK E GPS PID DH5147	N: 159,415.294 E: 789,358.871	SAME
STARK W GPS PID DH5162	N: 169,096.441 E: 760,343.022	SAME

\* Please List Any Additional Control Stations Used/Notes/Information on Back of Form

(C) REASON FOR COORDINATE SUBMITTAL (check one):

- Being Filed With a New U.S. PLS Monument Record
  - Or-
  - To Correct the Coordinates Listed on a Previously Filed PLS Monument Record
  - To Provide Coordinates for a Previously Filed PLS Monument Record without Coordinates
  - To Provide Supplemental Coordinates for Previously Filed U.S. Public Land Survey Monument Record
- R.L.S. & DATE OF PLS MONUMENT RECORD: \_\_\_\_\_

(D) AGENT(S) PERFORMING GPS OBSERVATIONS & COORDINATE COMPUTATION

- 1) SEAN M. WALSH, PLS
- 2) \_\_\_\_\_

I, SEAN M. WALSH, PLS  
 CERTIFY THAT THE COORDINATES PROVIDED ON THIS RECORD WERE DETERMINED BY ME OR UNDER MY DIRECTION AND CONTROL AND THAT THIS COORDINATE SUBMISSION FORM IS CORRECT AND COMPLETE TO THE BEST OF MY KNOWLEDGE AND BELIEF.

Sean M. Walsh  
 SIGNATURE

9/17/15  
 DATE

Seal

