

VERNON COUNTY

CERTIFIED U.S. PUBLIC LAND SURVEY MONUMENT RECORD

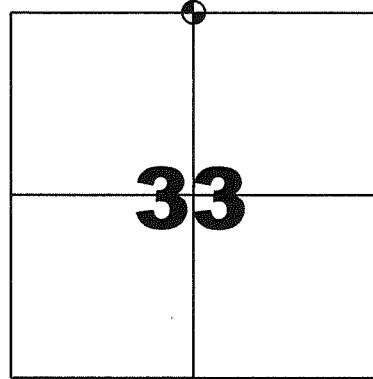
INSTRUCTIONS: THIS RECORD SHALL SHOW THE LOCATION OF THE CORNER AND SHALL INCLUDE ALL OF THE FOLLOWING ELEMENTS (A-1)

(A) IDENTIFY THE CORNER BY REFERENCE TO THE U.S. PUBLIC LAND SURVEY SYSTEM
NORTH QUARTER CORNER SECTION 33, T13N, R2W

- ⊕ = CORNER MONUMENT RESTORED - FOUND 1.25" IRON ROD, SET 2" IRON PIPE WITH BRASS CAP LUNDE MONUMENT
 WITNESSES TO CORNER LOCATION
- 1) SEAN M. WALSH
 - 2)
 - 3)

VERNON COUNTY COORDINATES
 NORTHING: 153,101.252
 EASTING: 772,919.628

BASIS OF BEARINGS AND COORDINATES:
 WISCRS VERNON, NAD 83(2011)



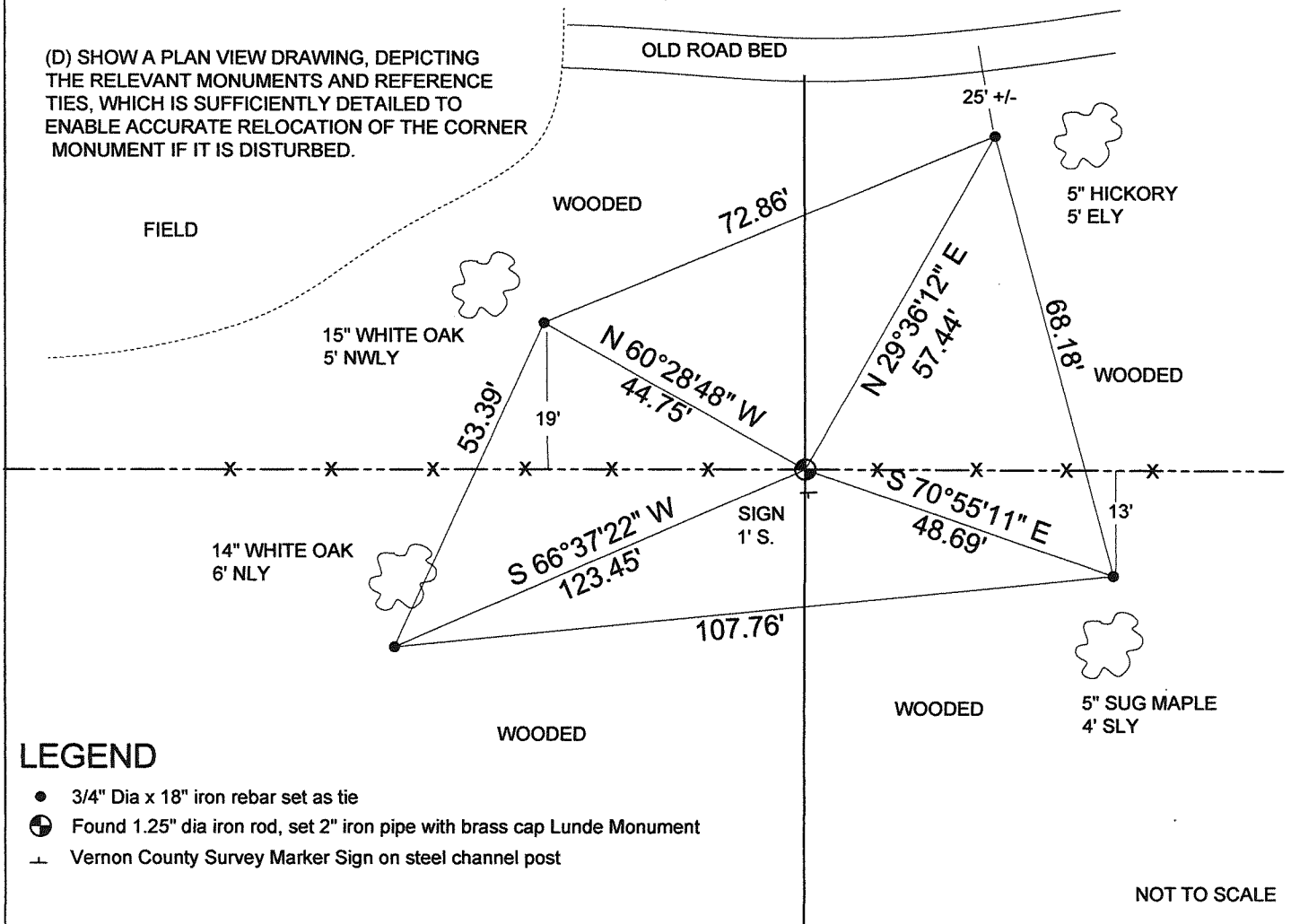
NORTH QUARTER CORNER

SECTION 33 , TOWN 13 NORTH, RANGE 2 WEST



(C) IN THE PLAN VIEW DRAWING BELOW, PROVIDE REFERENCE TO AT LEAST 4 WITNESS MONUMENTS OR, IF THE LOCATION IS WITHIN A MUNICIPALITY, TO AT LEAST 2 WITNESS MONUMENTS. (WITNESS MONUMENTS SHALL BE MADE OF CONCRETE, NATURAL STONE, IRON OR OTHER EQUALLY DURABLE MATERIAL) DESCRIBE WITNESS MONUMENTS

(D) SHOW A PLAN VIEW DRAWING, DEPICTING THE RELEVANT MONUMENTS AND REFERENCE TIES, WHICH IS SUFFICIENTLY DETAILED TO ENABLE ACCURATE RELOCATION OF THE CORNER MONUMENT IF IT IS DISTURBED.



LEGEND

- 3/4" Dia x 18" iron rebar set as tie
- ⊕ Found 1.25" dia iron rod, set 2" iron pipe with brass cap Lunde Monument
- ⊕ Vernon County Survey Marker Sign on steel channel post

NOT TO SCALE

VERNON COUNTY
CERTIFIED U.S. PUBLIC LAND SURVEY MONUMENT RECORD

RECOVERY PROCEDURES:

(E) A DESCRIPTION OF ANY RECORD EVIDENCE, MONUMENT EVIDENCE, OCCUPATIONAL EVIDENCE, TESTIMONIAL EVIDENCE OR ANY OTHER MATERIAL EVIDENCE CONSIDERED BY THE SURVEYOR, AND WHETHER THE MONUMENT WAS FOUND OR PLACED;

CORNER HISTORY:

ORIGINAL GOV'T SURVEY, ALFRED BROWN, 1846

1878 KNOWER MEASURED TO CORNER FOR SURVEY IN SECTION SECTION 28, NO TREES OR MONUMENTATION NOTED,
1894 STERLING FOUND GOV'T CORNER ON SURVEY IN SECTION 33, NO MONUMENTATION OR WITNESS TREES NOTED,
PRESUMED GOV TREES FOUND.

2002 ZIMMERMAN TIE SHEET SET 1.25" X 30" IRON ROD

2005 CARROLL: FOUND 1.25" IRON ROD DURING SURVEY IN SECTION 33

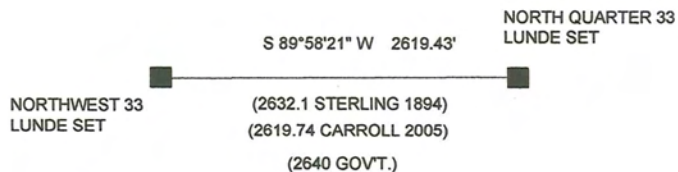
I FIND NO EVIDENCE OF THE ORIGINAL GOVERNMENT BEARING TREES.

I LOCATED A 1.25" DIAMETER IRON ROD AS DESCRIBED ON 2002 TIE SHEET BY ZIMMERMAN. FINDING NO OTHER EVIDENCE TO THE CONTRARY, I ACCEPTED AS THE BEST AVAILABLE EVIDENCE AND MONUMENTED AND PERPETUATED AS SHOWN HEREON.

(F) WHETHER THE CORNER WAS RESTORED THROUGH ACCEPTANCE OF AN OBLITERATED EVIDENCE LOCATION OR A FOUND PERPETUATED LOCATION;

FOUND PERPETUATED LOCATION

(G) WHETHER THE CORNER WAS REESTABLISHED THROUGH LOST-CORNER PROPORTIONATE METHODS;
IF SO, S HOW THE DIRECTIONS AND DISTANCES TO OTHER PUBLIC LAND SURVEY CORNERS WHICH WERE USED AS EVIDENCE OR USED FOR PROPORTIONING IN DETERMINING THE CORNER LOCATION;



SURVEYOR'S CERTIFICATE: CHAPTER 7.08 (3) (I)



THE UNDERSIGNED HEREBY CERTIFIES THAT THE U.S. PUBLIC LAND SURVEY MONUMENT RECORD SHOWN WAS DETERMINED BY THEM OR UNDER THEIR DIRECTION AND IS CORRECT AND COMPLETE TO THE BEST OF THEIR KNOWLEDGE AND BELIEF.

Sean M. Walsh

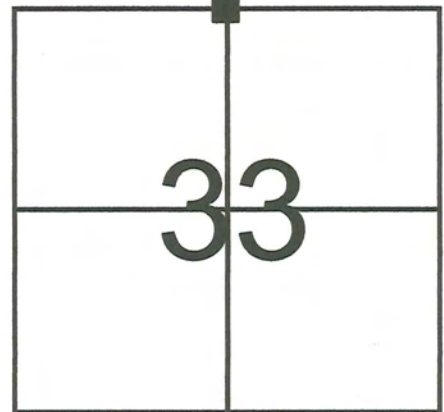
9/17/15
DATE CERTIFIED

VERNON COUNTY COORDINATE FORM
Addendum To
U.S. PUBLIC LAND SURVEY MONUMENT RECORD

INSTRUCTIONS: THIS RECORD FORM SHOULD BE USED WHEN COORDINATES ARE PROVIDED FOR A PUBLIC LAND SURVEY CORNER AND SHALL INCLUDE ALL OF THE FOLLOWING ELEMENTS (A-D) UNLESS INDICATED AS OPTIONAL

(A) IDENTIFY THE CORNER BY REFERENCE TO THE U.S. PUBLIC LAND SURVEY SYSTEM IN DIAGRAM AT RIGHT

■ = CORNER MONUMENT



T 13 N, R 2 E/W

(B) COORDINATES:

VERNON COUNTY (U.S. FEET)

NORTHING (Y): 153,101.252
EASTING (X): 772,919.628

GEOGRAPHIC (DMS to 4 decimal places):

LATITUDE: 43°34'01.6238" (N)
LONGITUDE: 90°37'17.0717" (W)

HORIZONTAL DATUM: NAD 83 (2011)

ORTHOMETRIC HT (U.S. ft): _____ (optional)

VERTICAL DATUM: _____

METHOD USED TO COMPUTE COORDINATES (check as applicable):

- RTK Observations from WISCORS Control
 RTK Observations from Passive Wl. Ht. Modernization Control
 Static Baselines
 OPUS-RS Solution OPUS-S Solution
 Combination of conventional procedures with GPS observations to set temporary control
 Single Angle Measurement Closed Traverse Loop

BASE CONTROL USED FOR COORDINATE COMPUTATION:

Station Name	Station Coordinates	Date/Time
STARK S GPS PID DH5161	N: 148,109.956 E: 772,907.4853	7/8/2015 6:58 AM & 7/20/2015 10:05 AM
MA BRENNAN GPS PID DH5160	N: 148,602.507 E: 748,776.104	SAME
STARK E GPS PID DH5147	N: 159,415.294 E: 789,358.871	2/8/2015 9:55 AM & 7/20/2015 12:50 PM
STARK W GPS PID DH5162	N: 169,096.441 E: 760,343.022	SAME

* Please List Any Additional Control Stations Used/Notes/Information on Back of Form

(C) REASON FOR COORDINATE SUBMITTAL (check one):

- Being Filed With a New U.S. PLS Monument Record
 -Or -
 To Correct the Coordinates Listed on a Previously Filed PLS Monument Record
 To Provide Coordinates for a Previously Filed PLS Monument Record without Coordinates
 To Provide Supplemental Coordinates for Previously Filed U.S. Public Land Survey Monument Record
 R.L.S. & DATE OF PLS MONUMENT RECORD: _____

(D) AGENT(S) PERFORMING GPS OBSERVATIONS & COORDINATE COMPUTATION

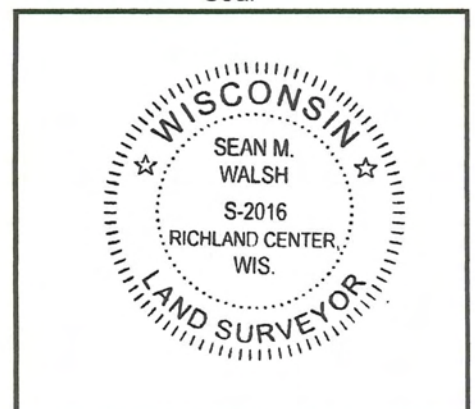
- 1) SEAN M. WALSH, PLS
 2) _____

I, SEAN M. WALSH, PLS

CERTIFY THAT THE COORDINATES PROVIDED ON THIS RECORD WERE DETERMINED BY ME OR UNDER MY DIRECTION AND CONTROL AND THAT THIS COORDINATE SUBMISSION FORM IS CORRECT AND COMPLETE TO THE BEST OF MY KNOWLEDGE AND BELIEF.

Sean Walsh 9/17/15
 SIGNATURE DATE

Seal



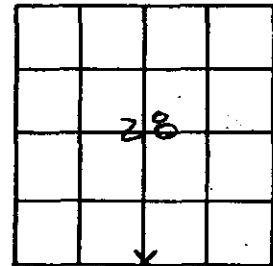
VERNON COUNTY Government Land Corner Certificate

TYPE OF MONUMENT: 1/4" x 30" IRON ROD ELEVATION - M.S.L. DATUM: _____
 STATE PLANE COORDINATES: N _____ THETA ANGLE: _____
 E _____ FIELD BOOK: 1237 PAGE 15

Basis for Monument Location

Use reverse side if necessary.
 Show info such as: History of corner, with reference to Vol. and page, dates, surveyor; exact description of monument found; if location computed, by taped or EDM traverse; landowner remarks, witnesses, etc.

CORNER WAS ORIGINALLY ESTABLISHED BY ALFRED L. BROWN IN JANUARY, 1846. BT'S LYNN 18 N3Z 37, BURR OAK 18 S5T 19.1 FOUND NO RECORD OF ANY SUBSEQUENT MONUMENTATION OR BT'S FOR THIS CORNER. FOUND NO EVIDENCE OF ORIGINAL BT'S. SET 1/4" x 30" IRON ROD IN OLD CORNER POST HOLE AT OCCUPIED FENCE CORNER.



LOCATION
(Indicated by 'X')

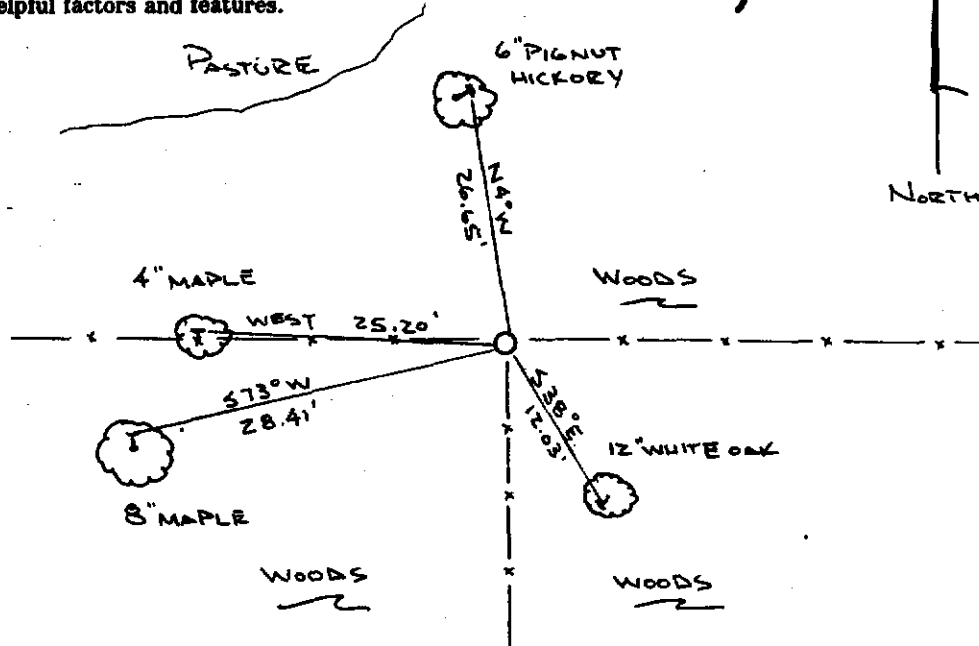


CITY, VILLAGE or TOWN TOWN OF STARK

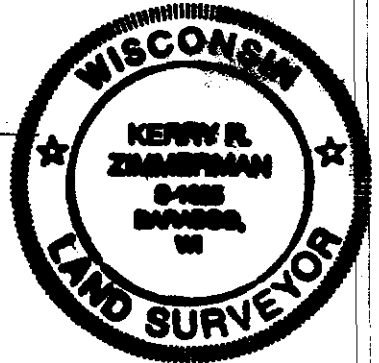
SECTION 28
 TOWN 13N
 RANGE ZW
 DRAFTED BY KRZ
 FIELD CREW KS-KZ

TIE SKETCH

(Show at least four ties. Also, fence lines, $\frac{1}{2}$ of roads, and any other helpful factors and features.)



ALL TREES ARE BLAZED.
 BEARINGS ARE MAG. HAND HELD.
 TIES TO 16d SPIKES



SEAL:

CERTIFIED CORRECT:

Kerry R. Zambian
 Registered Land Surveyor
 DATE: 12-18-02

CORNER MAINTENANCE INFO

SEAL:

36

For Co. Surveyor Filing Use →

CORNER NO. _____