

VERNON COUNTY

CERTIFIED U.S. PUBLIC LAND SURVEY MONUMENT RECORD

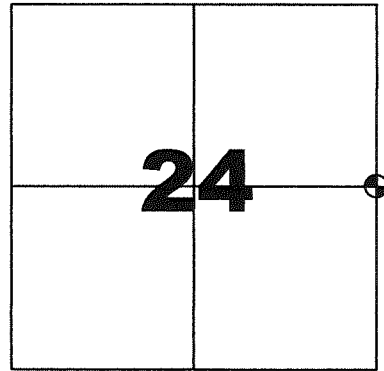
INSTRUCTIONS: THIS RECORD SHALL SHOW THE LOCATION OF THE CORNER AND SHALL INCLUDE ALL OF THE FOLLOWING ELEMENTS (A-1)

(A) IDENTIFY THE CORNER BY REFERENCE TO THE U.S. PUBLIC LAND SURVEY SYSTEM
EAST QUARTER CORNER SECTION 24, T13N, R2W

- ⊕ = CORNER MONUMENT RESTORED - 2" DIA IRON PIPE FOUND, SET 2" IRON PIPE WITH BRASS CAP LUNDE MONUMENT
 WITNESSES TO CORNER LOCATION
- 1) SEAN M. WALSH
 - 2)
 - 3)

VERNON COUNTY COORDINATES
 NORTHING: 160,991.918
 EASTING: 791,229.212

BASIS OF BEARINGS AND COORDINATES:
 WISCRS VERNON, NAD 83(2011)

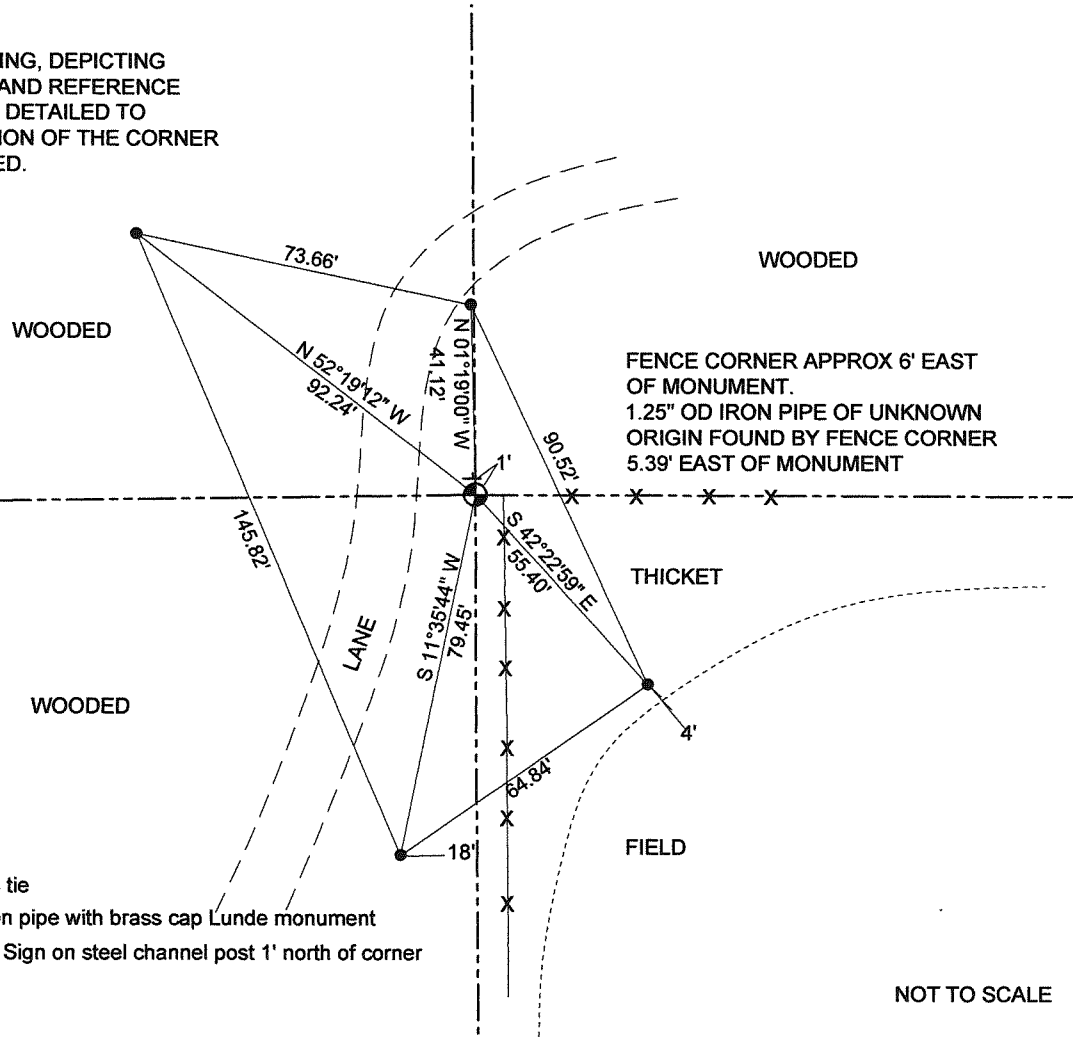


EAST QUARTER CORNER

SECTION 24 , TOWN 13 NORTH, RANGE 2 WEST

(C) IN THE PLAN VIEW DRAWING BELOW, PROVIDE REFERENCE TO AT LEAST 4 WITNESS MONUMENTS OR, IF THE LOCATION IS WITHIN A MUNICIPALITY, TO AT LEAST 2 WITNESS MONUMENTS. (WITNESS MONUMENTS SHALL BE MADE OF CONCRETE, NATURAL STONE, IRON OR OTHER EQUALLY DURABLE MATERIAL) DESCRIBE WITNESS MONUMENTS

(D) SHOW A PLAN VIEW DRAWING, DEPICTING THE RELEVANT MONUMENTS AND REFERENCE TIES, WHICH IS SUFFICIENTLY DETAILED TO ENABLE ACCURATE RELOCATION OF THE CORNER MONUMENT IF IT IS DISTURBED.



LEGEND

- 3/4" Dia x 18" iron rebar set as tie
- ⊕ 2" dia iron pipe found, set 2" iron pipe with brass cap Lunde monument
- ⊥ Vernon County Survey Marker Sign on steel channel post 1' north of corner

NOT TO SCALE

VERNON COUNTY

CERTIFIED U.S. PUBLIC LAND SURVEY MONUMENT RECORD

RECOVERY PROCEDURES:

(E) A DESCRIPTION OF ANY RECORD EVIDENCE, MONUMENT EVIDENCE, OCCUPATIONAL EVIDENCE, TESTIMONIAL EVIDENCE OR ANY OTHER MATERIAL EVIDENCE CONSIDERED BY THE SURVEYOR, AND WHETHER THE MONUMENT WAS FOUND OR PLACED;

CORNER HISTORY:

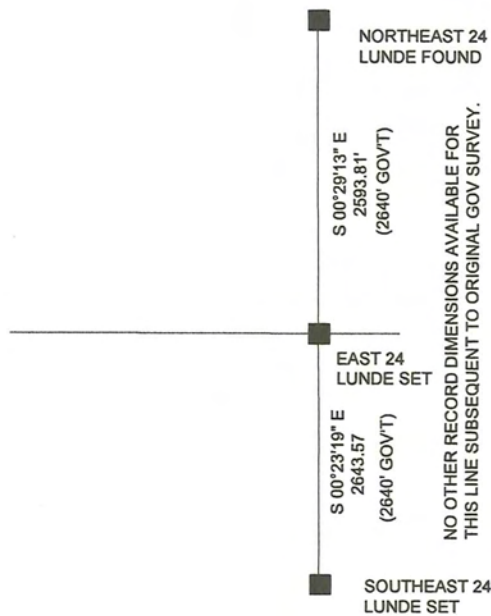
ORIGINAL GOV'T SURVEY, JE WHICHTER, 1845
 1870 I.F. THORP SUBDIVIDED SECTION 24, 13-2W, NO MENTION OF MONUMENTATION OR WITNESSES NOTED, PRESUMED GOV CORNER FOUND.
 1996 LAMPMAN PLAT OF SURVEY AND TIE SHEET, FOUND AND ACCPTED 2" IRON PIPE, UNDOCUMENTED ORIGIN, SECTION 19, 13-2W
 2001 CORNELL FOUND AND ACCEPTED 2" IRON PIPE FOR SURVEY IN SECTION 19, 13-1W

I LOCATED THE 2" IRON PIPE AS NOTED ABOVE BY LAMPMAN AND CORNELL. I ACCEPT THIS CORNER AS THE BEST AVAILABLE EVIDENCE AS REPORTED AND ACCEPTED BY OTHERS. I MONUMENTED AND PERPETUATED AS SHOWN. I ALSO LOCATED A 1.25" OD IRON PIPE OF UNKNOWN, UNDOCUMENTED ORIGIN AND NO APPARENT ACCEPTANCE DOCUMENTED BY SURVEY AT THE FENCE CORNER. APPROXIMATELY 6' EAST OF THE MONUMENT.

(F) WHETHER THE CORNER WAS RESTORED THROUGH ACCEPTANCE OF AN OBLITERATED EVIDENCE LOCATION OR A FOUND PERPETUATED LOCATION;

FOUND PERPETUATED LOCATION

(G) WHETHER THE CORNER WAS REESTABLISHED THROUGH LOST-CORNER PROPORTIONATE METHODS; IF SO, SHOW THE DIRECTIONS AND DISTANCES TO OTHER PUBLIC LAND SURVEY CORNERS WHICH WERE USED AS EVIDENCE OR USED FOR PROPORTIONING IN DETERMINING THE CORNER LOCATION;



SURVEYOR'S CERTIFICATE: CHAPTER 7.08 (3) (I)

THE UNDERSIGNED HEREBY CERTIFIES THAT THE U.S. PUBLIC LAND SURVEY MONUMENT RECORD SHOWN WAS DETERMINED BY THEM OR UNDER THEIR DIRECTION AND IS CORRECT AND COMPLETE TO THE BEST OF THEIR KNOWLEDGE AND BELIEF.



Sean M. Walsh

9/17/15

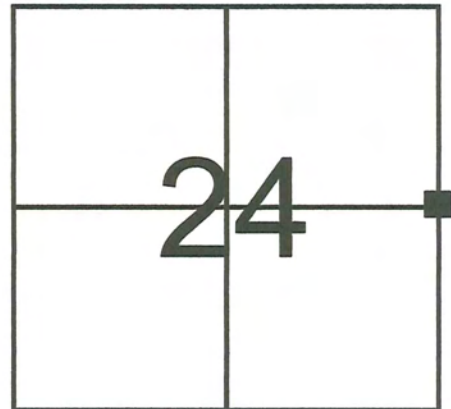
DATE CERTIFIED

VERNON COUNTY COORDINATE FORM
Addendum To
U.S. PUBLIC LAND SURVEY MONUMENT RECORD

INSTRUCTIONS: THIS RECORD FORM SHOULD BE USED WHEN COORDINATES ARE PROVIDED FOR A PUBLIC LAND SURVEY CORNER AND SHALL INCLUDE ALL OF THE FOLLOWING ELEMENTS (A-D) UNLESS INDICATED AS OPTIONAL

(A) IDENTIFY THE CORNER BY REFERENCE TO THE U.S. PUBLIC LAND SURVEY SYSTEM IN DIAGRAM AT RIGHT

■ = CORNER MONUMENT



(B) COORDINATES:

VERNON COUNTY (U.S. FEET)

NORTHING (Y): 160,991.918
EASTING (X): 791,229.212

GEOGRAPHIC (DMS to 4 decimal places):

LATITUDE: 43°35'19.1225" (N)
LONGITUDE: 90°33'08.0966" (W)

HORIZONTAL DATUM: NAD 83 (2011)

T 13 N, R 2 E/W

ORTHOMETRIC HT (U.S. ft): _____ (optional)

VERTICAL DATUM: _____

METHOD USED TO COMPUTE COORDINATES (check as applicable):

- RTK Observations from WISCORS Control
 RTK Observations from Passive Wl. Ht. Modernization Control
 Static Baselines
 OPUS-RS Solution OPUS-S Solution
 Combination of conventional procedures with GPS observations to set temporary control
 Single Angle Measurement Closed Traverse Loop

BASE CONTROL USED FOR COORDINATE COMPUTATION:

Station Name	Station Coordinates	Date/Time
STARK S GPS PID DH5161	N: 148,109.956 E: 772,907.4853	7/21/2015 11:54 AM & 8/25/2015 4:54 PM
MA BRENNAN GPS PID DH5160	N: 148,602.507 E: 748,776.104	SAME
STARK E GPS PID DH5147	N: 159,415.294 E: 789,358.871	SAME
STARK W GPS PID DH5162	N: 169,096.441 E: 760,343.022	SAME

* Please List Any Additional Control Stations Used/Notes/Information on Back of Form

(C) REASON FOR COORDINATE SUBMITTAL (check one):

- Being Filed With a New U.S. PLS Monument Record
 -Or-
 To Correct the Coordinates Listed on a Previously Filed PLS Monument Record
 To Provide Coordinates for a Previously Filed PLS Monument Record without Coordinates
 To Provide Supplemental Coordinates for Previously Filed U.S. Public Land Survey Monument Record
 R.L.S. & DATE OF PLS MONUMENT RECORD: _____

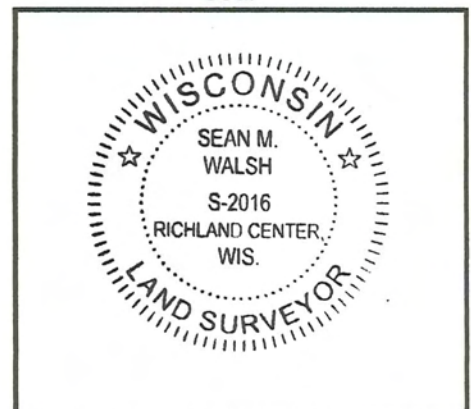
(D) AGENT(S) PERFORMING GPS OBSERVATIONS & COORDINATE COMPUTATION

- 1) SEAN M. WALSH, PLS
 2) _____

I, SEAN M. WALSH, PLS
 CERTIFY THAT THE COORDINATES PROVIDED ON THIS RECORD WERE DETERMINED BY ME OR UNDER MY DIRECTION AND CONTROL AND THAT THIS COORDINATE SUBMISSION FORM IS CORRECT AND COMPLETE TO THE BEST OF MY KNOWLEDGE AND BELIEF.

Sean Walsh 9/17/15
 SIGNATURE DATE

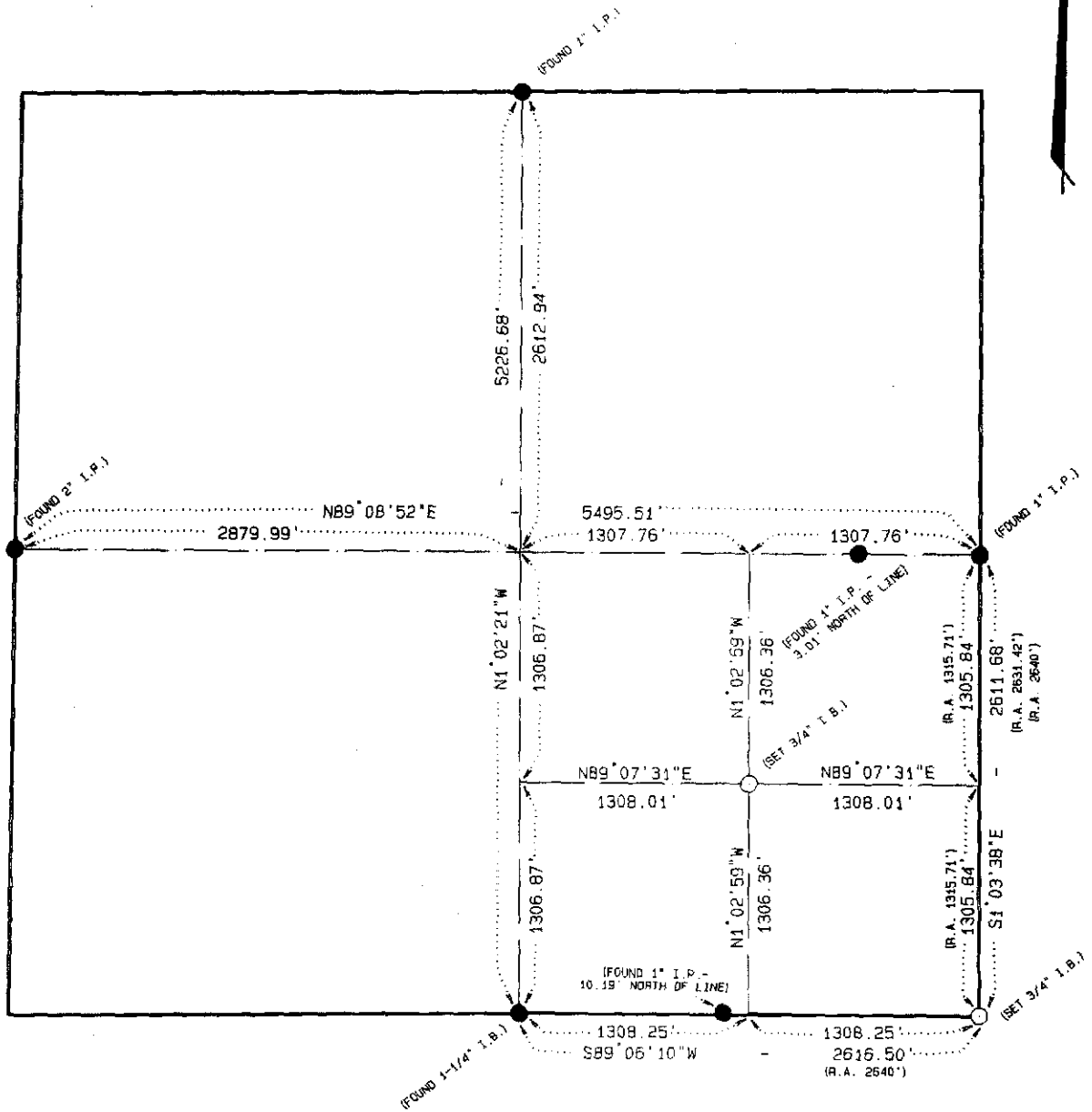
Seal



DATA SHEET

SECTION 19, T13N, R1W,
TOWN OF UNION, VERNON COUNTY,
WISCONSIN

SCALE: 1" = 1000'



BEARINGS REFERENCED TO THE EAST-WEST
ONE-QUARTER LINE OF SECTION 19, T13N, R1W.
ASSUMED BEARING NB9°08'52"E.