

VERNON COUNTY

CERTIFIED U.S. PUBLIC LAND SURVEY MONUMENT RECORD

INSTRUCTIONS: THIS RECORD SHALL SHOW THE LOCATION OF THE CORNER AND SHALL INCLUDE ALL OF THE FOLLOWING ELEMENTS (A-1)

(A) IDENTIFY THE CORNER BY REFERENCE TO THE U.S. PUBLIC LAND SURVEY SYSTEM
NORTH QUARTER CORNER SECTION 25, T13N, R2W

- ⊕ = CORNER MONUMENT RESTORED - FOUND 3/4" REBAR WITH YELLOW BLACKHAWK CAP, REPLACED WITH 2" IRON PIPE WITH BRASS CAP LUNDE MONUMENT
 WITNESSES TO CORNER LOCATION
 1) SEAN M. WALSH
 2)
 3)

VERNON COUNTY COORDINATES
 NORTHING: 158,337.270
 EASTING: 788,590.035

BASIS OF BEARINGS AND COORDINATES:
 WISCRS VERNON, NAD 83(2011)



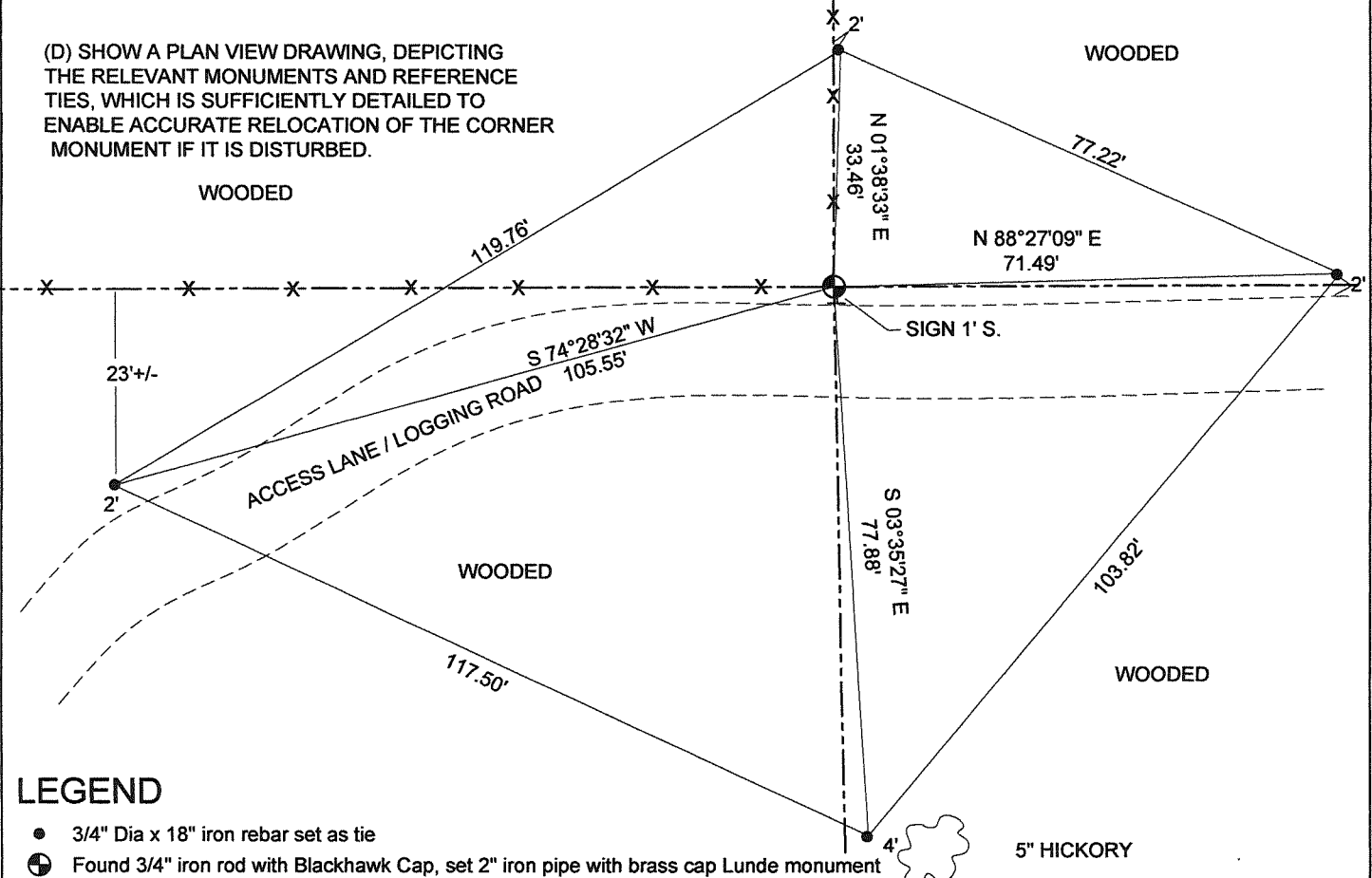
NORTH QUARTER CORNER

SECTION 25 , TOWN 13 NORTH, RANGE 2 WEST



(C) IN THE PLAN VIEW DRAWING BELOW, PROVIDE REFERENCE TO AT LEAST 4 WITNESS MONUMENTS OR, IF THE LOCATION IS WITHIN A MUNICIPALITY, TO AT LEAST 2 WITNESS MONUMENTS. (WITNESS MONUMENTS SHALL BE MADE OF CONCRETE, NATURAL STONE, IRON OR OTHER EQUALLY DURABLE MATERIAL) DESCRIBE WITNESS MONUMENTS

(D) SHOW A PLAN VIEW DRAWING, DEPICTING THE RELEVANT MONUMENTS AND REFERENCE TIES, WHICH IS SUFFICIENTLY DETAILED TO ENABLE ACCURATE RELOCATION OF THE CORNER MONUMENT IF IT IS DISTURBED.



LEGEND

- 3/4" Dia x 18" iron rebar set as tie
- ⊕ Found 3/4" iron rod with Blackhawk Cap, set 2" iron pipe with brass cap Lunde monument
- ⊕ Vernon County Survey Marker Sign on steel channel post

NOT TO SCALE

VERNON COUNTY

CERTIFIED U.S. PUBLIC LAND SURVEY MONUMENT RECORD

RECOVERY PROCEDURES:

(E) A DESCRIPTION OF ANY RECORD EVIDENCE, MONUMENT EVIDENCE, OCCUPATIONAL EVIDENCE, TESTIMONIAL EVIDENCE OR ANY OTHER MATERIAL EVIDENCE CONSIDERED BY THE SURVEYOR, AND WHETHER THE MONUMENT WAS FOUND OR PLACED;

CORNER HISTORY:

ORIGINAL GOV'T SURVEY, ALFRED BROWN, 1846

1870 I.F. THORP NOTES ONE WITNESS TREE ON A SURVEY IN SECTION 24, NO REMAINS FOUND.

1892 KNOWER SHOWS FOUND GOV'T CORNER AND NOTES SAME TREE AS THE THORP SURVEY IN SECTION 24. NO EVIDENCE OF TREE REMAINS AT THIS TIME.

1998 CUMMER SHOWS CORNER ON SURVEY IN SECTION 25 BUT SHOWS NO MONUMENTATION OR DIMENSIONS.

2005 CORNELL FINDS A 3/4" IRON BAR WITH BLACKHAWK CAP AND ACCEPTS AS THE CORNER DURING A SURVEY IN SECTION 25

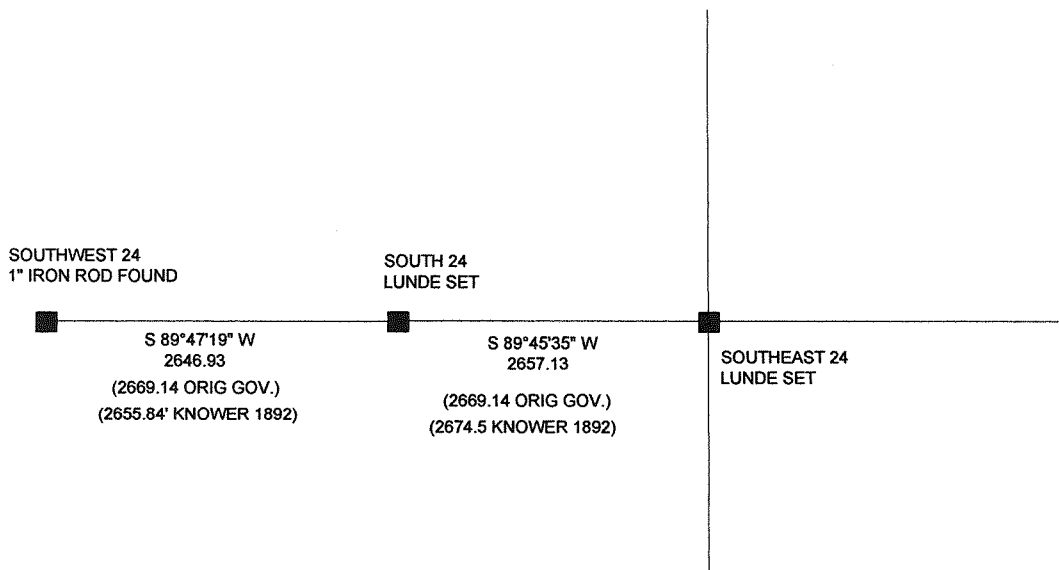
I LOCATED A 3/4" IRON ROD WITH A YELLOW PASTIC "BLACKHAWK SURVEYING" CAP AT THE CORNER OF OCCUPATION.

I ACCEPTED THE OCCUPIED LOCATION AND CAPPED IRON ROD AS THE BEST AVAILABLE EVIDENCE. I MONUMENTED AND PERPETUATED THE CORNER ACCORDING TO THE INFORMATION SHOWN.

(F) WHETHER THE CORNER WAS RESTORED THROUGH ACCEPTANCE OF AN OBLITERATED EVIDENCE LOCATION OR A FOUND PERPETUATED LOCATION;

FOUND PERPETUATED LOCATION

(G) WHETHER THE CORNER WAS REESTABLISHED THROUGH LOST-CORNER PROPORTIONATE METHODS; IF SO, S HOW THE DIRECTIONS AND DISTANCES TO OTHER PUBLIC LAND SURVEY CORNERS WHICH WERE USED AS EVIDENCE OR USED FOR PROPORTIONING IN DETERMINING THE CORNER LOCATION;



SURVEYOR'S CERTIFICATE: CHAPTER 7.08 (3) (I)

THE UNDERSIGNED HEREBY CERTIFIES THAT THE U.S. PUBLIC LAND SURVEY MONUMENT RECORD SHOWN WAS DETERMINED BY THEM OR UNDER THEIR DIRECTION AND IS CORRECT AND COMPLETE TO THE BEST OF THEIR KNOWLEDGE AND BELIEF.



Sean M. Walsh

9/17/15

DATE CERTIFIED

VERNON COUNTY COORDINATE FORM
Addendum To
U.S. PUBLIC LAND SURVEY MONUMENT RECORD

INSTRUCTIONS: THIS RECORD FORM SHOULD BE USED WHEN COORDINATES ARE PROVIDED FOR A PUBLIC LAND SURVEY CORNER AND SHALL INCLUDE ALL OF THE FOLLOWING ELEMENTS (A-D) UNLESS INDICATED AS OPTIONAL

(A) IDENTIFY THE CORNER BY REFERENCE TO THE U.S. PUBLIC LAND SURVEY SYSTEM IN DIAGRAM AT RIGHT

■ = CORNER MONUMENT



(B) COORDINATES:

VERNON COUNTY (U.S. FEET)

NORTHING (Y): 158,337.270
EASTING (X): 788,590.035

GEOGRAPHIC (DMS to 4 decimal places):

LATITUDE: 43°34'52.9768" (N)
LONGITUDE: 90°33'44.0501" (W)

HORIZONTAL DATUM: NAD 83 (2011)

T 13 N, R 2 E/W

ORTHOMETRIC HT (U.S. ft): _____ (optional)

VERTICAL DATUM: _____

METHOD USED TO COMPUTE COORDINATES (check as applicable):

- RTK Observations from WISCORS Control
 RTK Observations from Passive Wl. Ht. Modernization Control
 Static Baselines
 OPUS-RS Solution OPUS-S Solution
 Combination of conventional procedures with GPS observations to set temporary control
 Single Angle Measurement Closed Traverse Loop

BASE CONTROL USED FOR COORDINATE COMPUTATION:

Station Name	Station Coordinates	Date/Time
STARK S GPS PID DH5161	N: 148,109.956 E: 772,907.4853	7/21/2015 5:24 PM & 8/20/2015 7:48 AM
MA BRENNAN GPS PID DH5160	N: 148,602.507 E: 748,776.104	SAME
STARK E GPS PID DH5147	N: 159,415.294 E: 789,358.871	SAME
STARK W GPS PID DH5162	N: 169,096.441 E: 760,343.022	SAME

* Please List Any Additional Control Stations Used/Notes/Information on Back of Form

(C) REASON FOR COORDINATE SUBMITTAL (check one):

- Being Filed With a New U.S. PLS Monument Record
 -Or-
 To Correct the Coordinates Listed on a Previously Filed PLS Monument Record
 To Provide Coordinates for a Previously Filed PLS Monument Record without Coordinates
 To Provide Supplemental Coordinates for Previously Filed U.S. Public Land Survey Monument Record
 R.L.S. & DATE OF PLS MONUMENT RECORD: _____

(D) AGENT(S) PERFORMING GPS OBSERVATIONS & COORDINATE COMPUTATION

- 1) SEAN M. WALSH, PLS
 2) _____

I, SEAN M. WALSH, PLS

CERTIFY THAT THE COORDINATES PROVIDED ON THIS RECORD WERE DETERMINED BY ME OR UNDER MY DIRECTION AND CONTROL AND THAT THIS COORDINATE SUBMISSION FORM IS CORRECT AND COMPLETE TO THE BEST OF MY KNOWLEDGE AND BELIEF.

Sean Walsh 9/12/15
 SIGNATURE DATE

Seal

