

VERNON COUNTY

CERTIFIED U.S. PUBLIC LAND SURVEY MONUMENT RECORD

INSTRUCTIONS: THIS RECORD SHALL SHOW THE LOCATION OF THE CORNER AND SHALL INCLUDE ALL OF THE FOLLOWING ELEMENTS (A-1)

(A) IDENTIFY THE CORNER BY REFERENCE TO THE U.S. PUBLIC LAND SURVEY SYSTEM
NORTHEAST CORNER SECTION 25, T13N, R2W

⊕ = CORNER MONUMENT RESTORED - USACE BRASS CAP MONUMENT FOUND

WITNESSES TO CORNER LOCATION

- 1) SEAN M. WALSH
- 2)
- 3)

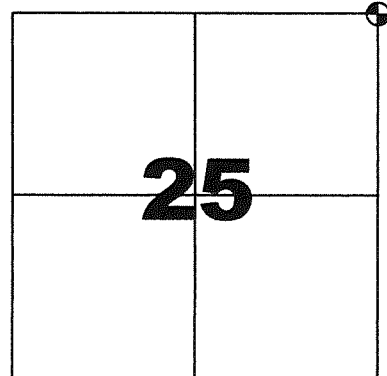
VERNON COUNTY COORDINATES

NORTHING: 158,348.407

EASTING: 791,247.144

BASIS OF BEARINGS AND COORDINATES:

WISCRS VERNON, NAD 83(2011)



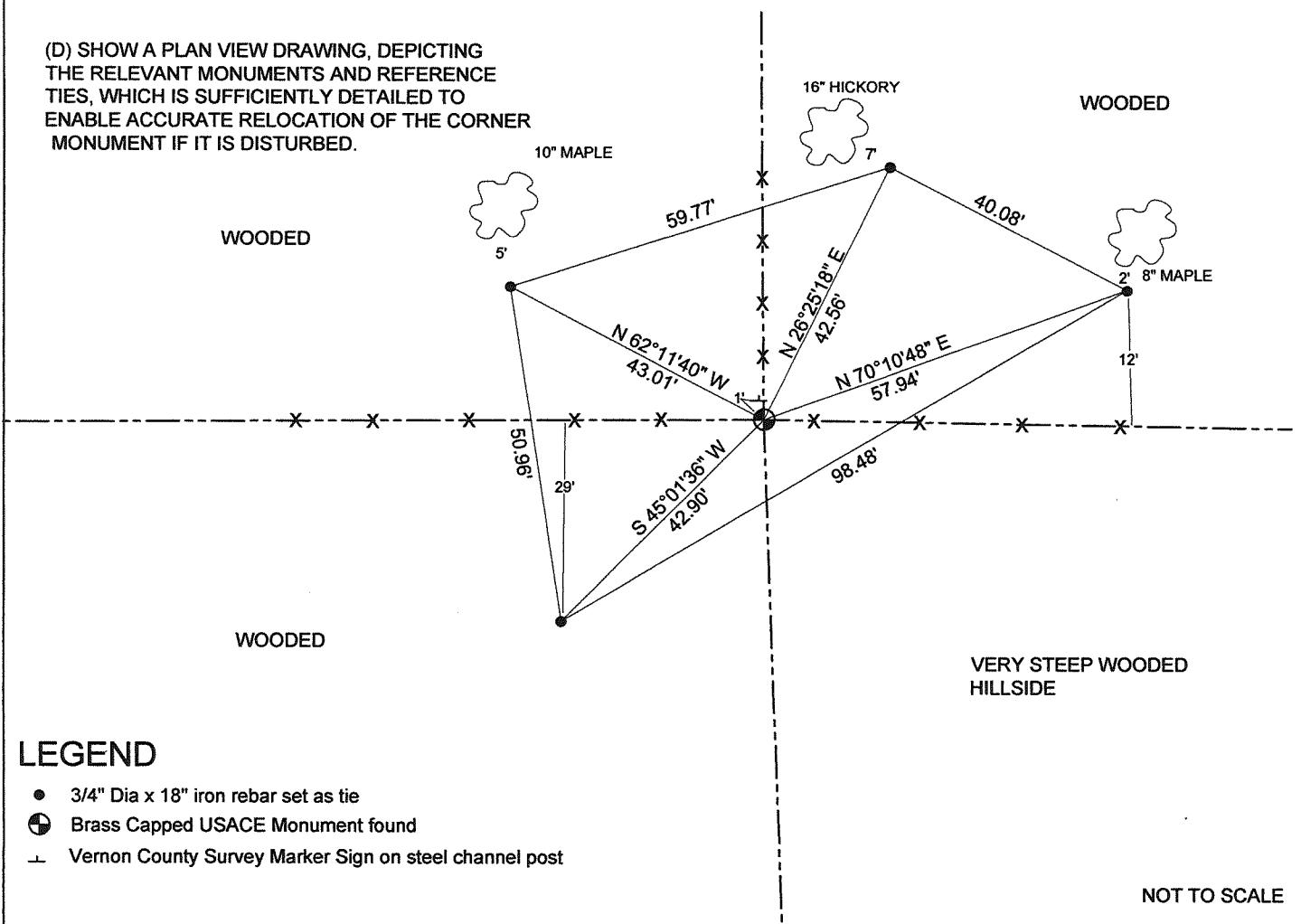
NORTHEAST CORNER

SECTION 25 , TOWN 13 NORTH, RANGE 2 WEST



(C) IN THE PLAN VIEW DRAWING BELOW, PROVIDE REFERENCE TO AT LEAST 4 WITNESS MONUMENTS OR, IF THE LOCATION IS WITHIN A MUNICIPALITY, TO AT LEAST 2 WITNESS MONUMENTS. (WITNESS MONUMENTS SHALL BE MADE OF CONCRETE, NATURAL STONE, IRON OR OTHER EQUALLY DURABLE MATERIAL) DESCRIBE WITNESS MONUMENTS

(D) SHOW A PLAN VIEW DRAWING, DEPICTING THE RELEVANT MONUMENTS AND REFERENCE TIES, WHICH IS SUFFICIENTLY DETAILED TO ENABLE ACCURATE RELOCATION OF THE CORNER MONUMENT IF IT IS DISTURBED.



LEGEND

- 3/4" Dia x 18" iron rebar set as tie
- ⊕ Brass Capped USACE Monument found
- ⊥ Vernon County Survey Marker Sign on steel channel post

NOT TO SCALE

VERNON COUNTY

CERTIFIED U.S. PUBLIC LAND SURVEY MONUMENT RECORD

RECOVERY PROCEDURES:

(E) A DESCRIPTION OF ANY RECORD EVIDENCE, MONUMENT EVIDENCE, OCCUPATIONAL EVIDENCE, TESTIMONIAL EVIDENCE OR ANY OTHER MATERIAL EVIDENCE CONSIDERED BY THE SURVEYOR, AND WHETHER THE MONUMENT WAS FOUND OR PLACED;

CORNER HISTORY:

ORIGINAL GOV'T SURVEY, J.E. WHICHTER, 1845
 1876 E. WYMAN USED CORNER FOR SURVEY IN SECTION 24, 13-2W, NOTED TREES, NO EVIDENCE OF WHICH REMAINS
 1892 KNOWER FOUND GOV'T CORNER. SURVEY IN SECTION 25 NOTED TWO TREES NOW GONE
 1995 CORNELL FOUND AND ACCEPTED SPIKE WITH WASHERS ON SURVEY OF EAST LINE 25, 13-2W
 1998 CORNELL FOUND AND ACCEPTED 1" IRON PIPE ON SURVEY IN SECTION 30, 13-1W
 2003 CORNELL FOUND AND ACCEPTED 1" IRON PIPE ON SURVEY IN SECTION 30, 13-1W
 2007 CARROLL FOUND AND ACCEPTED 1" IRON PIPE ON SURVEY IN SECTION 19, 13-1W

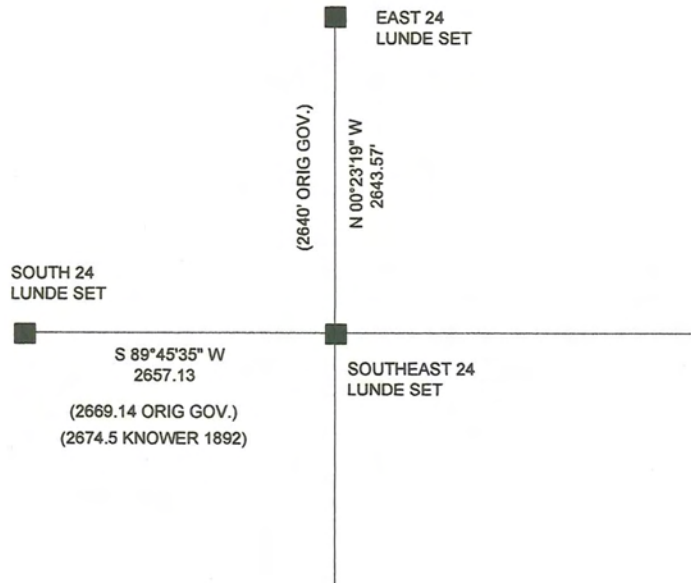
I FIND NO EVIDENCE OF ORIGINAL GOVERNMENT SURVEY BEARING TREES,

I LOCATED A 1.25" OD IRON PIPE AT THE LOCATION OF PHYSICAL OCCUPATION. BASED ON PRIOR ACCEPTANCE OF THE IRON PIPE AS DOCUMENTED ABOVE. I ACCEPTED THIS AS THE BEST AVAILABLE EVIDENCE, MONUMENTED AND PERPETUATED AS SHOWN HEREON.

(F) WHETHER THE CORNER WAS RESTORED THROUGH ACCEPTANCE OF AN OBLITERATED EVIDENCE LOCATION OR A FOUND PERPETUATED LOCATION;

FOUND PERPETUATED LOCATION

(G) WHETHER THE CORNER WAS REESTABLISHED THROUGH LOST-CORNER PROPORTIONATE METHODS; IF SO, S HOW THE DIRECTIONS AND DISTANCES TO OTHER PUBLIC LAND SURVEY CORNERS WHICH WERE USED AS EVIDENCE OR USED FOR PROPORTIONING IN DETERMINING THE CORNER LOCATION;



SURVEYOR'S CERTIFICATE: CHAPTER 7.08 (3) (I)

THE UNDERSIGNED HEREBY CERTIFIES THAT THE U.S. PUBLIC LAND SURVEY MONUMENT RECORD SHOWN WAS DETERMINED BY THEM OR UNDER THEIR DIRECTION AND IS CORRECT AND COMPLETE TO THE BEST OF THEIR KNOWLEDGE AND BELIEF.



Sean M. Walsh

9/17/15

DATE CERTIFIED

VERNON COUNTY COORDINATE FORM
 Addendum To
U.S. PUBLIC LAND SURVEY MONUMENT RECORD

INSTRUCTIONS: THIS RECORD FORM SHOULD BE USED WHEN COORDINATES ARE PROVIDED FOR A PUBLIC LAND SURVEY CORNER AND SHALL INCLUDE ALL OF THE FOLLOWING ELEMENTS (A-D) UNLESS INDICATED AS OPTIONAL

(A) IDENTIFY THE CORNER BY REFERENCE TO THE U.S. PUBLIC LAND SURVEY SYSTEM IN DIAGRAM AT RIGHT

■ = CORNER MONUMENT



T 13 N, R 2 E (W)

(B) COORDINATES:

VERNON COUNTY (U.S. FEET)

NORTHING (Y): 158,348.407
 EASTING (X): 791,247.144

GEOGRAPHIC (DMS to 4 decimal places):

LATITUDE: 43°34'53.0154" (N)
 LONGITUDE: 90°33'07.9529" (W)

HORIZONTAL DATUM: NAD 83 (2011)

ORTHOMETRIC HT (U.S. ft): _____ (optional)

VERTICAL DATUM: _____

METHOD USED TO COMPUTE COORDINATES (check as applicable):

- RTK Observations from WISCORS Control
- RTK Observations from Passive Wl. Ht. Modernization Control
- Static Baselines
- OPUS-RS Solution OPUS-S Solution
- Combination of conventional procedures with GPS observations to set temporary control
 - Single Angle Measurement Closed Traverse Loop

BASE CONTROL USED FOR COORDINATE COMPUTATION:

Station Name	Station Coordinates	Date/Time
STARK S GPS PID DH5161	N: 148,109.956 E: 772,907.4853	7/21/2015 1:10 PM & 8/22/2015 6:05 AM
MA BRENNAN GPS PID DH5160	N: 148,602.507 E: 748,776.104	SAME
STARK E GPS PID DH5147	N: 159,415.294 E: 789,358.871	SAME
STARK W GPS PID DH5162	N: 169,096.441 E: 760,343.022	SAME

* Please List Any Additional Control Stations Used/Notes/Information on Back of Form

(C) REASON FOR COORDINATE SUBMITTAL (check one):

- Being Filed With a New U.S. PLS Monument Record
 - Or-
 - To Correct the Coordinates Listed on a Previously Filed PLS Monument Record
 - To Provide Coordinates for a Previously Filed PLS Monument Record without Coordinates
 - To Provide Supplemental Coordinates for Previously Filed U.S. Public Land Survey Monument Record
- R.L.S. & DATE OF PLS MONUMENT RECORD: _____

(D) AGENT(S) PERFORMING GPS OBSERVATIONS & COORDINATE COMPUTATION

- 1) SEAN M. WALSH, PLS
- 2) _____

I, SEAN M. WALSH, PLS

CERTIFY THAT THE COORDINATES PROVIDED ON THIS RECORD WERE DETERMINED BY ME OR UNDER MY DIRECTION AND CONTROL AND THAT THIS COORDINATE SUBMISSION FORM IS CORRECT AND COMPLETE TO THE BEST OF MY KNOWLEDGE AND BELIEF.

Sean M. Walsh 9/17/15
 SIGNATURE DATE

Seal

