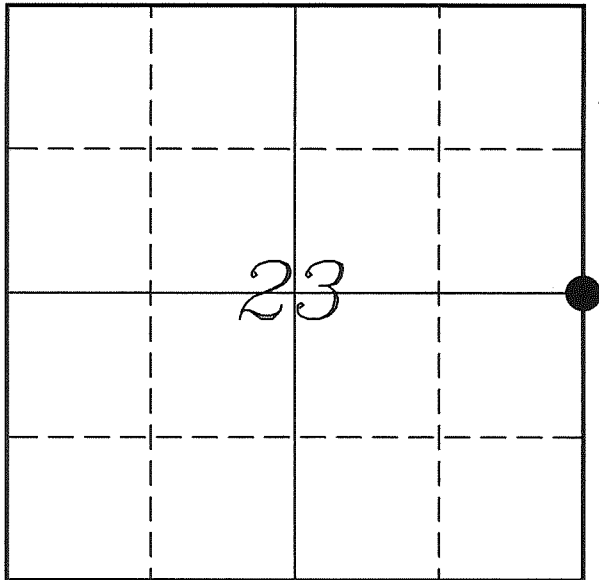


---

# U. S. PUBLIC LAND SURVEY MONUMENT RECORD

---

## SECTION 23, T13N, R2W, TOWN OF STARK VERNON COUNTY, WISCONSIN



VERNON COUNTY COORDINATE SYSTEM	
Northing	160920.148
Easting	785952.459
Datum	NAD 1983 (2007)
Elevation	
Datum	
TYPE OF LANDMARK:	
Set Lunde Monument	
BEARINGS ARE REFERENCED TO:	
Vernon County Coordinates	

LOCATION OF LANDMARK

Crew: Laurence E Johns III

Date: 4 May 2011

---

Describe any record evidence, monument evidence, testimonial evidence or any other material evidence you considered and whether the monument was found or restored through acceptance of an obliterated evidence location.

No bearing trees were located.

During Knower's survey of 1892, he measured from the Center of Section 23 which he had established in his earlier survey. The distance from the existing fence corner at the '40' Corner to the center of section matches his 1892 survey very well.

The only occupation at the E 1/4 is an East/West fence. This fence lines up with '40' Corner and the W 1/4 Corner.

I extended the line through the fence corner and doubled the distance from center section and '40' fence corner to establish this corner.

I set a Lunde Monument at this corner.

---

Describe or show any material discrepancy between the location of the restored corner and that of the corner previously restored or re-established.

Alfred Brown established this corner in January 1846.

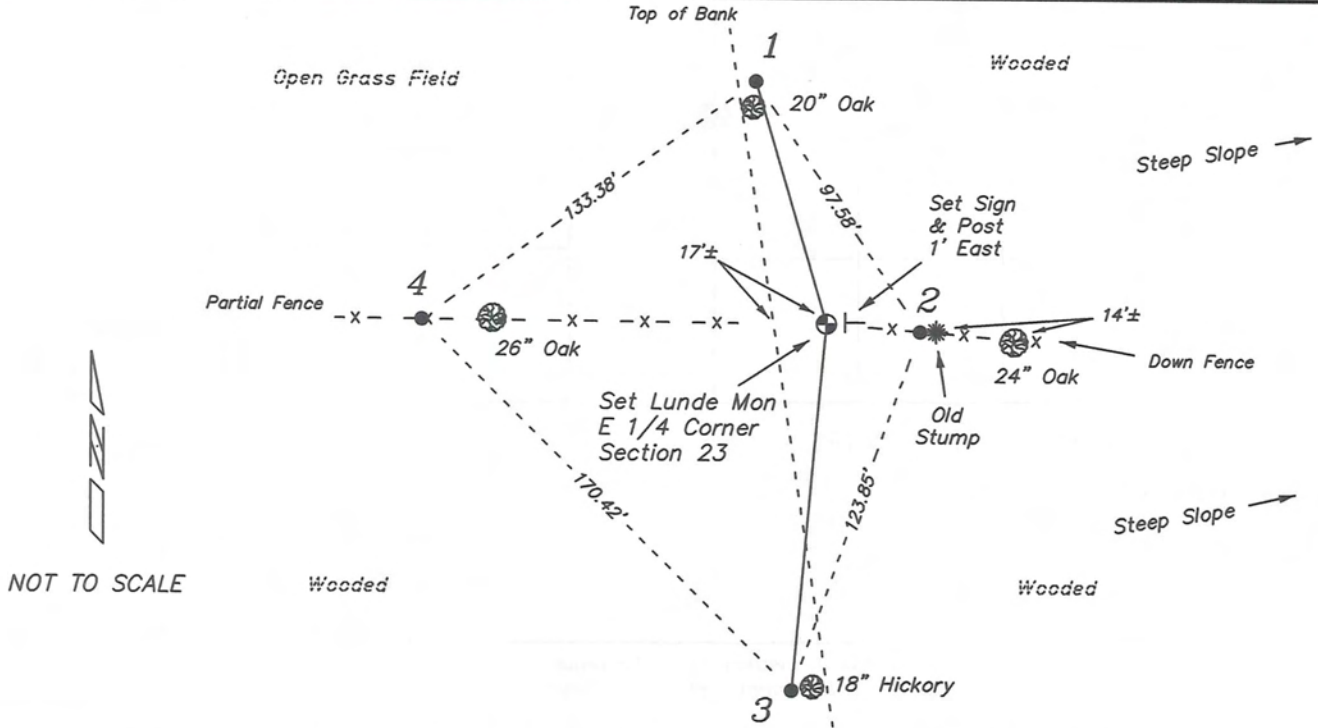
A surveyor was at this corner, in December 1873, during a survey in Section 24. No name is listed on the survey record and he does not show whether he found the government corner or re-established it.

Wm Knower was at this corner, in May 1882, during a survey in Section 23. He does not show if he found the government corner, but does show re-tying the corner with a bearing tree.

Wm Knower was at this corner, in April 1892, during a survey in the E 1/2 of Section 23. He shows that he found the government corner and renewed the tie.

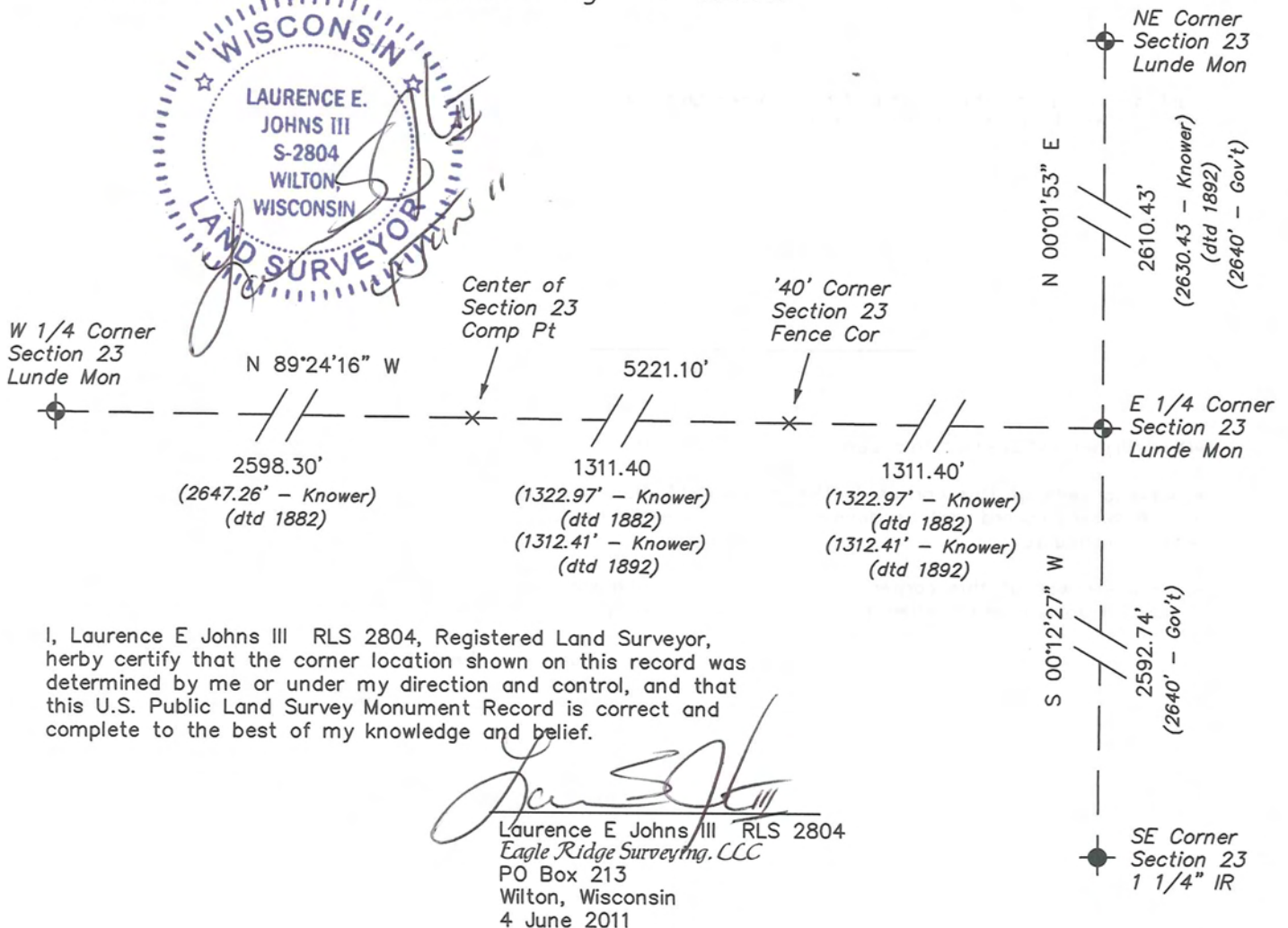
# RECORD OF DURABLE WITNESS MONUMENTS

NO	DESCRIPTION	BEARING	DISTANCE
1	Set 3/4" x 18" Iron Rod 1' North of 20" White Oak	N 16°25'46" W	82.27'
2	Set 3/4" x 18" Iron Rod In Down Fence - West Side of Stump	S 85°16'47" E	30.61'
3	Set 3/4" x 18" Iron Rod 2' West of 18" Hickory	S 05°10'54" W	119.76'
4	Set 3/4" x 18" Iron Rod In Down Fence - 16' West of 26" Oak	N 89°33'34" W	131.55'

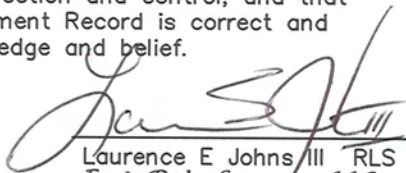


## PLAN VIEW DRAWING OF REFERENCE TIES

Map Showing Distance And Direction To Other Public Land Survey  
Corners Used For Re-Establishing The Corner



I, Laurence E Johns III RLS 2804, Registered Land Surveyor, hereby certify that the corner location shown on this record was determined by me or under my direction and control, and that this U.S. Public Land Survey Monument Record is correct and complete to the best of my knowledge and belief.

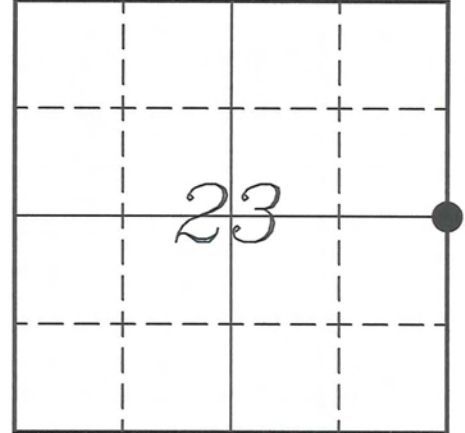
  
 Laurence E Johns III RLS 2804  
 Eagle Ridge Surveying, LLC  
 PO Box 213  
 Wilton, Wisconsin  
 4 June 2011

**VERNON COUNTY COORDINATE SUBMISSION FORM**  
 "As An Addendum To"  
**VERNON COUNTY**  
**CERTIFIED U.S. PUBLIC LAND SURVEY MONUMENT RECORD**

INSTRUCTIONS: THIS RECORD FORM SHOULD BE USED WHEN COORDINATES ARE PROVIDED FOR A PUBLIC LAND SURVEY CORNER AND SHALL INCLUDE ALL OF THE FOLLOWING ELEMENTS (A-D)

(A) IDENTIFY THE CORNER BY REFERENCE TO THE U.S. PUBLIC LAND SURVEY SYSTEM IN DIAGRAM AT RIGHT

● = CORNER MONUMENT



T 13 N, R 2 W

(B) COORDINATES:

GEOGRAPHIC (Degrees Minutes Seconds)

LATITUDE: 43° 35' 18.5524" N

LONGITUDE: 90° 34' 19.7925" W

ELLIPSOID HT (m): \_\_\_\_\_

DATUM: NAD 1983 (2007)

GEOID03 ADJ: -33.654

ORTHOMETRIC HT: \_\_\_\_\_

VERNON COUNTY (U.S. FEET)

Coord Quality (+/-)

NORTHING (Y): 160920.148 \_\_\_\_\_

EASTING (X): 785952.459 \_\_\_\_\_

GPS METHOD USED TO COMPUTE COORDINATES (check as applicable)

- RTK Observations     Static Baselines     OPUS-RS Solution     OPUS-S Solution  
 Combination of GPS Observations & Conventional Procedures  
 Single Angle Measurement     Closed Traverse Loop

Was a Least Squares Adjustment Used to Compute Coordinates? Yes /  No

BASE CONTROL USED FOR COORDINATE COMPUTATION

Station Name	Station Coordinates	Date/Time
<u>STARK E GPS</u>	<u>43° 35' 03.6028" N    90° 33' 33.5668" W</u>	<u>04/25/2011 - 15:50</u>
	<u>N - 159415.297    E - 789358.809</u>	
<u>Same</u>		<u>05/04/2011 - 14:48</u>

(C) REASON FOR COORDINATES SUBMITTAL (check one)

- Being Filed With a New U.S. PLS Monument Record  
 To Correct the Coordinates Listed on a Previously Filed PLS Monument Record  
 To Provide Coordinates for Previously Filed PLS Monument Record without Coordinates  
 To Provide Supplemental Coordinates for a Previously Filed PLS Monument Record

MOST RECENT PLS MONUMENT RECORD DATE:

R.L.S. WHO CREATED MOST RECENT PLS MONUMENT RECORD:

(D) AGENT(S) PERFORMING GPS OBSERVATIONS & COORDINATE COMPUTATION

- 1) LAURENCE E JOHNS III  
 2) \_\_\_\_\_

I, LAURENCE E JOHNS III RLS 2804, REGISTERED LAND SURVEYOR, HEREBY CERTIFY THAT THE COORDINATES PROVIDED ON THIS RECORD WERE DETERMINED BY ME OR UNDER MY DIRECTION AND CONTROL AND THAT THIS COORDINATE SUBMISSION FORM IS CORRECT AND COMPLETE TO THE BEST OF MY KNOWLEDGE AND BELIEF.



*Laurence E. Johns III*  
 Laurence E Johns III RLS 2804  
 Eagle Ridge Surveying, LLC  
 PO Box 213  
 Wilton, Wisconsin  
 4 June 2011