

VERNON COUNTY CERTIFIED U.S. PUBLIC LAND SURVEY MONUMENT RECORD

INSTRUCTIONS: THIS RECORD SHALL SHOW THE LOCATION OF THE CORNER AND SHALL INCLUDE ALL OF THE FOLLOWING ELEMENTS (A-I)

(A) IDENTIFY THE CORNER BY REFERENCE TO THE U.S. PUBLIC LAND SURVEY SYSTEM

■ = CORNER MONUMENT RESTORED

WITNESSES TO CORNER LOCATION:

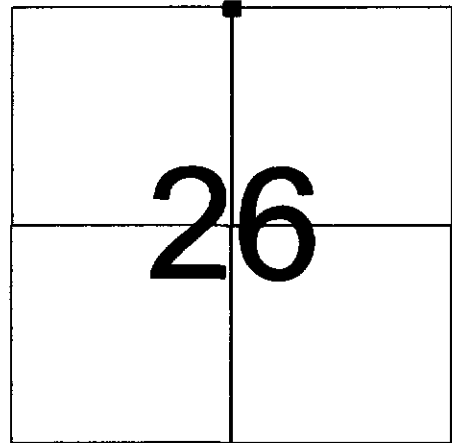
- 1) Robert M. Lampman
- 2) Jessica A. Zamor

GEOGRAPHIC COORDINATES - WGS84/GRS80 - NAD83(CORS96)

Lat: 43°34'53.39403" N
Lon: 90°34'55.53418" W

VERNON COUNTY COORDINATES - NAD83(CORS96) - SURVEY FEET

NORTHING: 158366.147
EASTING: 783327.986



SECTION 26
TOWN 13 NORTH, RANGE 2 WEST

(B) DESCRIBE ANY RECORD EVIDENCE, MONUMENT EVIDENCE, OCCUPATIONAL EVIDENCE, TESTIMONIAL EVIDENCE OR ANY OTHER MATERIAL EVIDENCE YOU CONSIDERED, AND WHETHER THE MONUMENT WAS FOUND OR PLACED.

Accepted existing 3/4" iron rebar at occupied corner as the best available evidence of the original government corner location. The found monument agrees with alignment of occupation along the North line of the NW 1/4 of Section 26. Said monument also falls in line with a found iron pipe at the South 1/4 corner of Section 26 and the Center of Section 26. Said Center being reestablished from witness (cross on rock) remaining from W.H.Knowler's subdivision of Section 26 dated 1888 and recorded in Volume 1, Page 330 of Resurveys. Said Center being further verified by remains of occupation.

Established new witnesses as shown below.

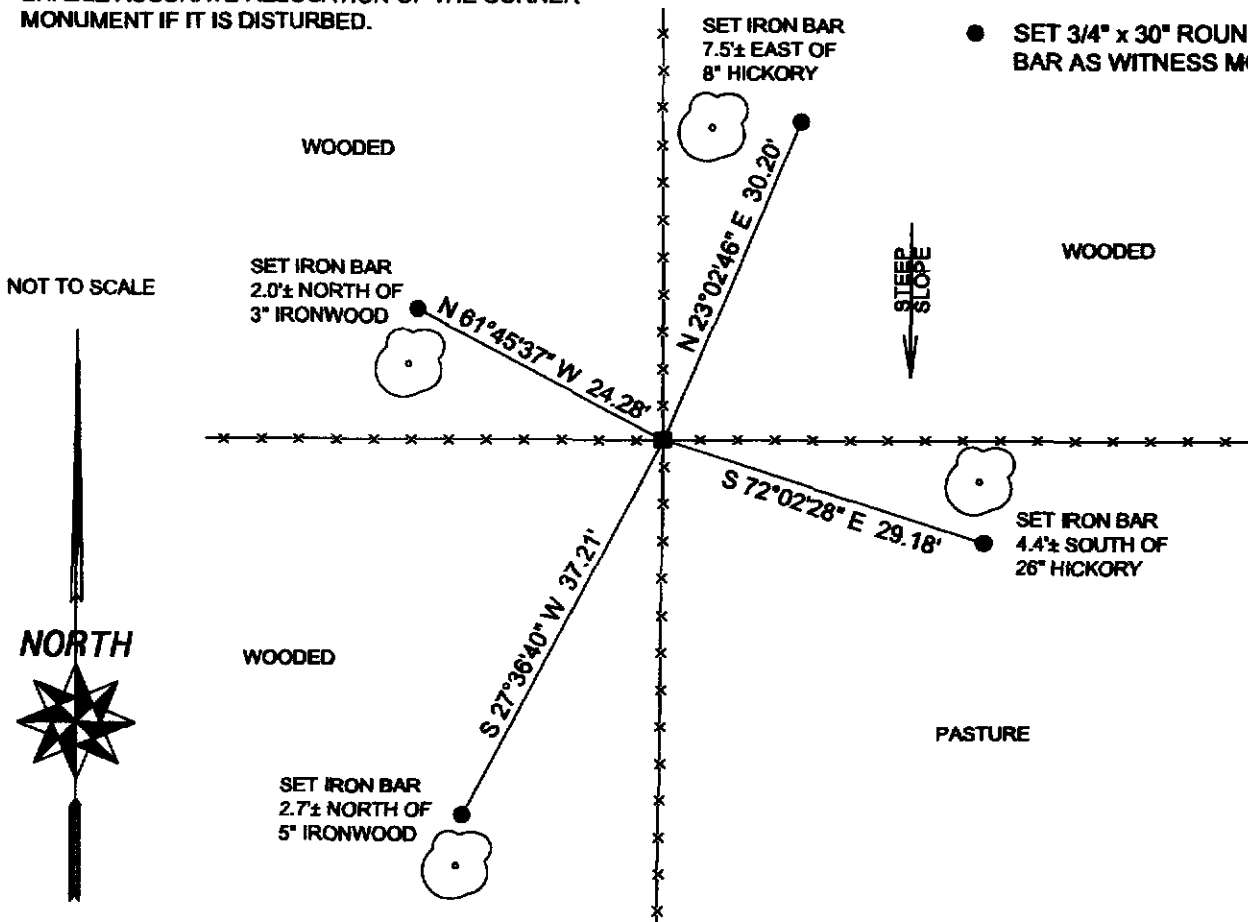
Additional corner history included on reverse.

(C) IN THE PLAN VIEW DRAWING BELOW, PROVIDE REFERENCE TIES TO AT LEAST 4 WITNESS MONUMENTS OR, IF THE LOCATION IS WITHIN A MUNICIPALITY, TO AT LEAST 2 WITNESS MONUMENTS. (WITNESS MONUMENTS SHALL BE MADE OF CONCRETE, NATURAL STONE, IRON, OR OTHER EQUALLY DURABLE MATERIAL.) DESCRIBE WITNESS MONUMENTS.

(D) SHOW A PLAN VIEW DRAWING, DEPICTING THE RELEVANT MONUMENTS AND REFERENCE TIES, WHICH IS SUFFICIENTLY DETAILED TO ENABLE ACCURATE RELOCATION OF THE CORNER MONUMENT IF IT IS DISTURBED.

LEGEND

- FOUND EXISTING 3/4" IRON REBAR
- SET 3/4" x 30" ROUND IRON BAR AS WITNESS MONUMENT



(E) DESCRIBE ANY MATERIAL DISCREPANCY BETWEEN THE LOCATION OF THE CORNER AS RESTORED OR REESTABLISHED AND THE LOCATION OF THAT CORNER AS PREVIOUSLY RESTORED OR REESTABLISHED BY DISTANCE AND DIRECTION. SHOW THE DISCREPANCY ON THE PLAN VIEW DRAWING UNDER (D), ABOVE. SHOW THE DISTANCES BETWEEN THE CORNER AS PREVIOUSLY RESTORED OR REESTABLISHED AND (1) THE CORNER AS RESTORED OR REESTABLISHED, AND (2) TO AT LEAST 2 OF THE WITNESS MONUMENTS AS SHOWN ON THE DRAWING IN (D), ABOVE.

N/A

(F) WAS THE CORNER RESTORED THROUGH ACCEPTANCE OF (1) AN OBLITERATED EVIDENCE LOCATION, OR (2) A FOUND PERPETUATED LOCATION?

(2) A FOUND PERPETUATED LOCATION

(G & H) WAS THE CORNER REESTABLISHED THROUGH LOST CORNER PROPORTIONATE METHODS? IF SO SHOW THE METHOD, INCLUDING THE DIRECTIONS AND DISTANCES TO OTHER PUBLIC LAND SURVEY CORNERS USED AS EVIDENCE OR USED FOR PROPORTIONING IN DETERMINING THE CORNER LOCATION.

N/A

(**) ANY ADDITIONAL INFORMATION RELATED TO CORNER LOCATION

CORNER HISTORY:

-Original government corner location established by A.L. Brown in 1846.

-W.H.Knower utilized the corner and noted it as "Gov" on a subdivision of Section 23, T13N, R2W dated 1882.

-W.H.Knower utilized the corner and noted it as "Gov" on a subdivision of Section 26, T13N, R2W dated 1888.

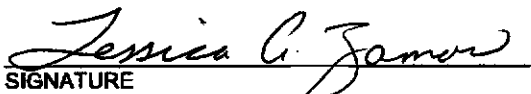
-W.H.Knower utilized the corner and noted it as "Gov" on a subdivision of the East 1/2 of Section 23, T13N, R2W dated 1892.

(There was no mention of corner renewal or establishment of additional witnesses on any of the above mentioned surveys by W.H.Knower.)

-Robert M. Lampman found an existing 3/4" iron rebar at the corner in 1995 as per a plat of survey prepared for Mary Norris Realty.

AFFIX LAND SURVEYOR SEAL

(I) I, JESSICA A. ZAMOR, CERTIFY THAT THE LOCATION SHOWN ON THIS RECORD WAS DETERMINED BY ME OR UNDER MY DIRECTION AND CONTROL AND THAT THIS U.S. PUBLIC LAND SURVEY MONUMENT RECORD IS CORRECT AND COMPLETE TO THE BEST OF MY KNOWLEDGE AND BELIEF.


SIGNATURE

4-23-2005
DATE

