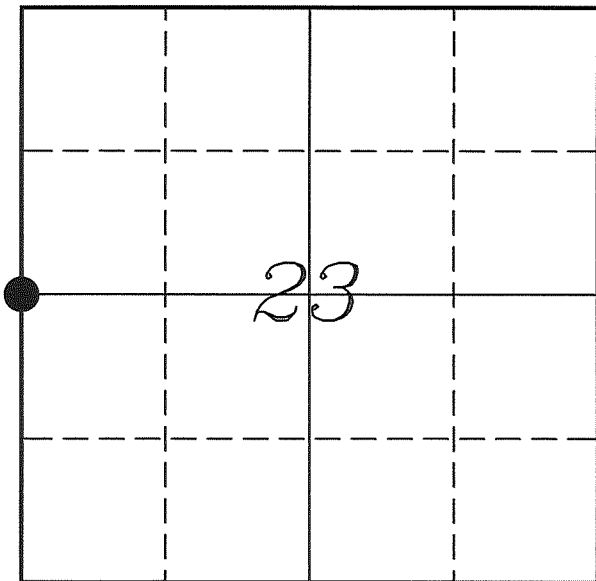


U. S. PUBLIC LAND SURVEY MONUMENT RECORD

SECTION 23, T13N, R2W, TOWN OF STARK VERNON COUNTY, WISCONSIN



LOCATION OF LANDMARK

Crew: Laurence E Johns III

Date: 8 June 2011

VERNON COUNTY COORDINATE SYSTEM	
Northing	160974.242
Easting	780731.310
Datum	NAD 1983 (2007)
Elevation	
Datum	
TYPE OF LANDMARK:	
Set Lunde Monument	
BEARINGS ARE REFERENCED TO:	
Vernon County Coordinates	

Describe any record evidence, monument evidence, testimonial evidence or any other material evidence you considered and whether the monument was found or restored through acceptance of an obliterated evidence location.

No bearing trees of record were found.

I found the 1" Iron Pipe set by Carroll on a North/South fence line. His tie sheet states that he set the pipe at the intersection of the line through the W 1/4 Corner and occupied center of section of Section 22 and the the North/South fence line.

This position also falls on the line between the E 1/4 Corner and occupied center of Section 23.

This location matches internal occupation in both Sections 22 and 23 and the occupation along the West line of Section 23.

I accepted the location as the best available evidence of the original government corner and replaced it with a Lunde Monument.

Describe or show any material discrepancy between the location of the restored corner and that of the corner previously restored or re-established.

Afred Brown established this corner in January 1846.

Wm Knower was at this corner, in April 1882, during a survey in Section 22. He shows that he found the government corner and renewed the tie.

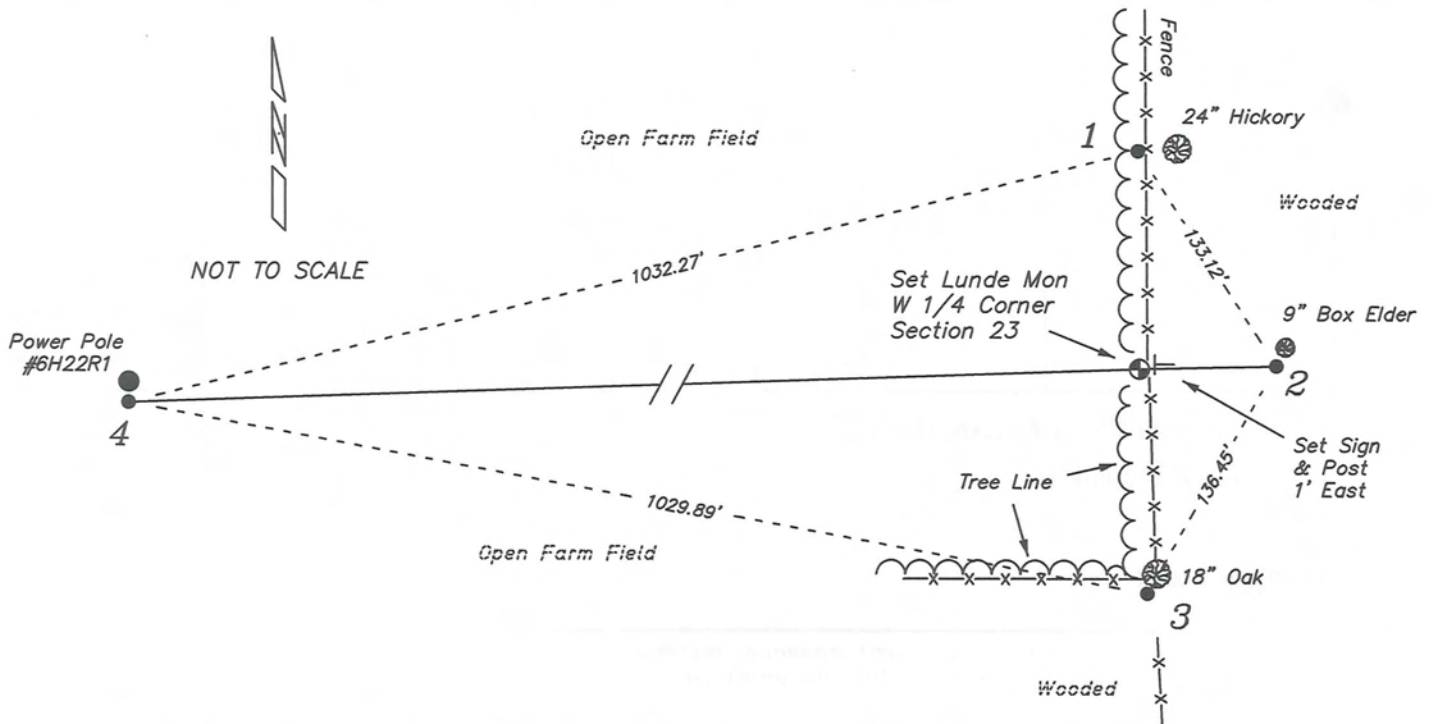
Wm Knower was again at this corner, in May 1882, during a survey in Section 23.

Patrick Carroll was at this corner, in June 2006, and prepared a Tie Sheet. He shows he set a 1" Iron Pipe at this corner.

1001.msa.B

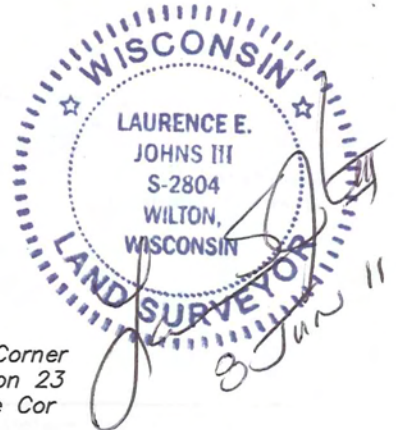
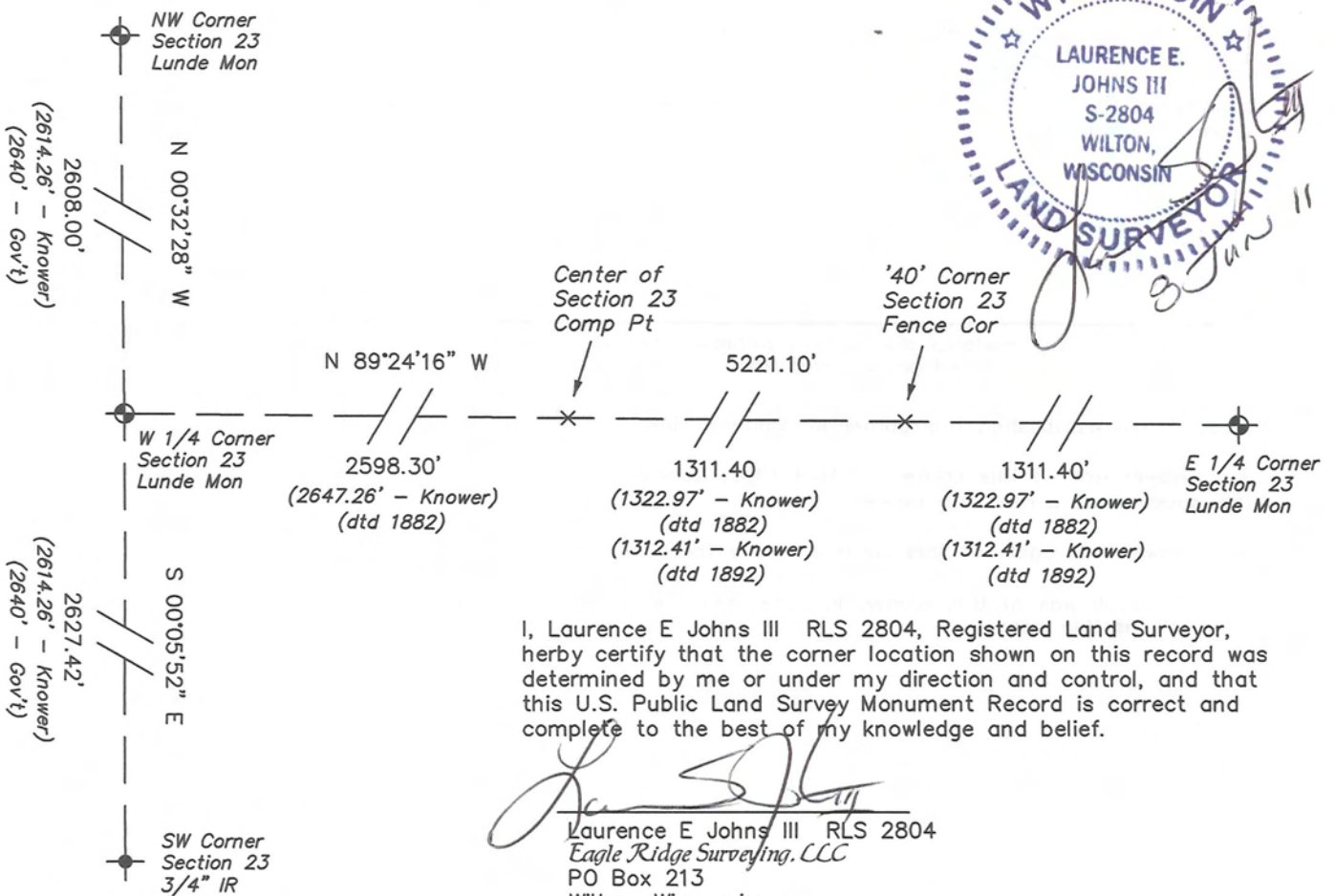
RECORD OF DURABLE WITNESS MONUMENTS

NO	DESCRIPTION	BEARING	DISTANCE
1	Set 3/4" x 18" Iron Rod In Fence - 3' West of 24" Hickory	N 00°27'46" W	113.43'
2	Set 3/4" x 18" Iron Rod 1' Southwest of 9" Box Elder	N 88°45'49" E	71.22'
3	Set 3/4" x 18" Iron Rod 1' Southwest of 18" Oak	S 01°52'44" E	117.20'
4	Set 3/4" x 18" Iron Rod 1' South of Power Pole #6H22R1	S 88°06'58" W	1023.21'




PLAN VIEW DRAWING OF REFERENCE TIES

Map Showing Distance And Direction To Other Public Land Survey
Corners Used For Re-Establishing The Corner



I, Laurence E Johns III RLS 2804, Registered Land Surveyor, hereby certify that the corner location shown on this record was determined by me or under my direction and control, and that this U.S. Public Land Survey Monument Record is correct and complete to the best of my knowledge and belief.

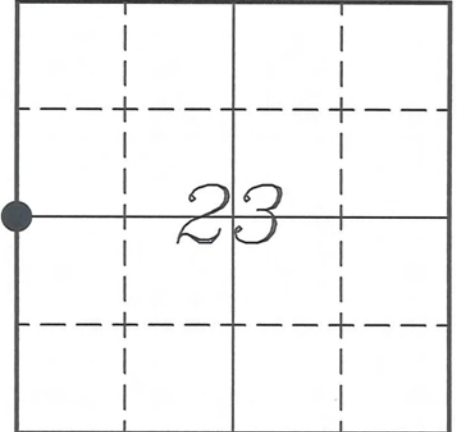

 Laurence E Johns III RLS 2804
 Eagle Ridge Surveying, LLC
 PO Box 213
 Wilton, Wisconsin
 8 June 2011

VERNON COUNTY COORDINATE SUBMISSION FORM
 "As An Addendum To"
VERNON COUNTY
CERTIFIED U.S. PUBLIC LAND SURVEY MONUMENT RECORD

INSTRUCTIONS: THIS RECORD FORM SHOULD BE USED WHEN COORDINATES ARE PROVIDED FOR A PUBLIC LAND SURVEY CORNER AND SHALL INCLUDE ALL OF THE FOLLOWING ELEMENTS (A-D)

(A) IDENTIFY THE CORNER BY REFERENCE TO THE U.S. PUBLIC LAND SURVEY SYSTEM IN DIAGRAM AT RIGHT

● = CORNER MONUMENT



(B) COORDINATES:

GEOGRAPHIC (Degrees Minutes Seconds)

LATITUDE: 43° 35' 19.2115" N

LONGITUDE: 90° 35' 30.7285" W

ELLIPSOID HT (m): _____

DATUM: NAD 1983 (2007)

GEOID03 ADJ: -33.610

ORTHOMETRIC HT: _____

VERNON COUNTY (U.S. FEET)

Coord Quality (+/-)

NORTHING (Y): 160974.242

EASTING (X): 780731.310

GPS METHOD USED TO COMPUTE COORDINATES (check as applicable)

RTK Observations Static Baselines OPUS-RS Solution OPUS-S Solution

Combination of GPS Observations & Conventional Procedures

Single Angle Measurement Closed Traverse Loop

Was a Least Squares Adjustment Used to Compute Coordinates? Yes / No

BASE CONTROL USED FOR COORDINATE COMPUTATION

Station Name	Station Coordinates	Date/Time
<u>STARK E GPS</u>	<u>43° 35' 03.6028" N 90° 33' 33.5668" W</u>	<u>04/25/2011 - 14:02</u>
	<u>N - 159415.297 E - 789358.809</u>	
<u>Same</u>		<u>06/08/2011 - 15:49</u>

(C) REASON FOR COORDINATES SUBMITTAL (check one)

Being Filed With a New U.S. PLS Monument Record

To Correct the Coordinates Listed on a Previously Filed PLS Monument Record

To Provide Coordinates for Previously Filed PLS Monument Record without Coordinates

To Provide Supplemental Coordinates for a Previously Filed PLS Monument Record

MOST RECENT PLS MONUMENT RECORD DATE:

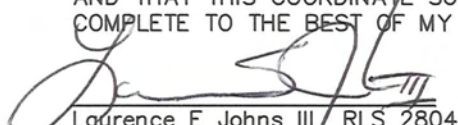
R.L.S. WHO CREATED MOST RECENT PLS MONUMENT RECORD:

(D) AGENT(S) PERFORMING GPS OBSERVATIONS & COORDINATE COMPUTATION

1) LAURENCE E JOHNS III

2) _____

I, LAURENCE E JOHNS III RLS 2804, REGISTERED LAND SURVEYOR, HEREBY CERTIFY THAT THE COORDINATES PROVIDED ON THIS RECORD WERE DETERMINED BY ME OR UNDER MY DIRECTION AND CONTROL AND THAT THIS COORDINATE SUBMISSION FORM IS CORRECT AND COMPLETE TO THE BEST OF MY KNOWLEDGE AND BELIEF.


 Laurence E Johns III RLS 2804
 Eagle Ridge Surveying/CCC
 PO Box 213
 Wilton, Wisconsin
 8 June 2011



Vernon
COUNTY

Survey Monument Record

TYPE OF MONUMENT: 1 1/4" X 24" IRON PIPE SET

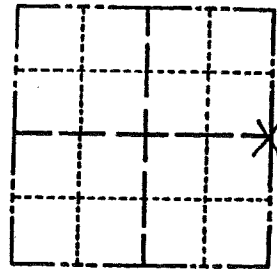
STATE PLANE COORDINATES: N _____
E _____

ELEVATION — M.S.L. DATUM: _____

THETA ANGLE: _____

FIELD BOOK: _____ PAGE _____

CORNER NO. _____
SECTION 22
TOWN T 13 N
RANGE R 2W
STARK



LOCATION
(Indicated by 'X')

SEAL:



BASIS FOR MONUMENT LOCATION

(Use reverse side if necessary)

Show info such as: History of corner, with reference to Vol. and pg, dates, surveyor; exact description of monument replaced; if location computed, by taped or EDM traverse; landowner remarks, etc.

No evidence of E 1/4 corner along a N-S fence line. Therefore, from a Brass monument at W 1/4 corner through the possession center of section to the N-S fence along the east section determined the best location to site this E 1/4 corner.

CERTIFIED CORRECT:

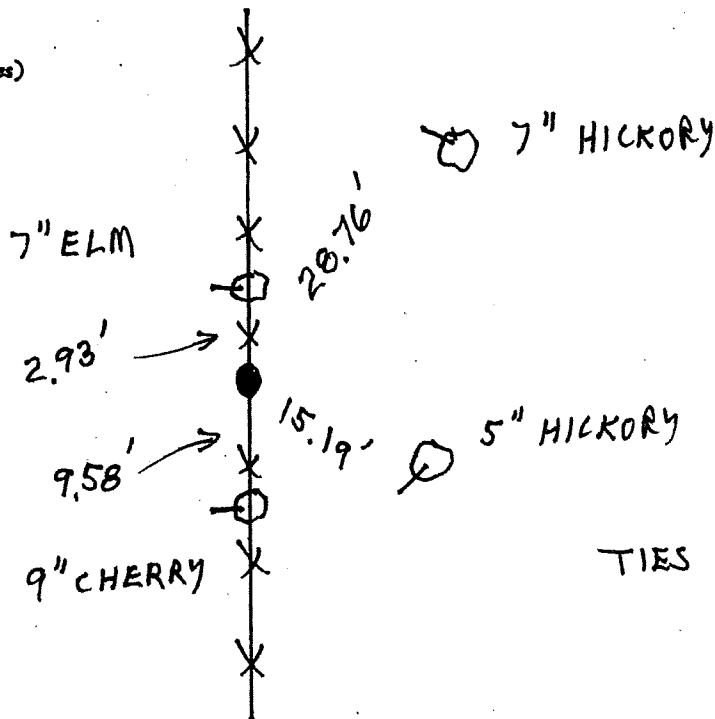
Patrick A. Carroll

Registered Land Surveyor

DATE: 6/6/06

TIE SKETCH

(Show at least four ties)



TIES ARE 6" SPIKES.