

CERTIFICATE

CERTIFIED LAND CORNER

No. _____

I, Bryan H. Meyer, do hereby certify that on the 20th day of October 19 93, I found (no evidence) of the West 1/4 corner of Section 21, T 13 N, R 2 W Fourth Principal Meridian, and I re-established said corner according to the Wisconsin Statutes as shown and described hereon.

Dated this 29th day of Oct. 19 93.

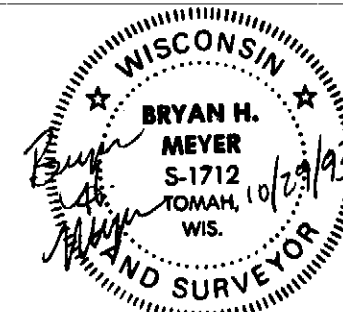
Bryan H. Meyer
Registered Land Surveyor
Title

History of corner establishment since Original Government Survey

William Kowner was here in April of 1884 and again in May of 1888.

Description of corner evidence found:

I found no evidencednce of the original government bearing trees nor Kowner's bearing trees. I re-established this corner by doubling North the bearing and distance of the line which runs along the West line of SW1/4-SW1/4.



Bryan H. Meyer
H. A. Sime and Associates
P. O. Box 705
Tomah, Wisconsin 54660
Phone: (608)-372-5392

COUNTY SURVEYOR FORM NO. 1

Description of corner and witness monuments, references and accessories used to perpetuate the original or re-established location of this corner:

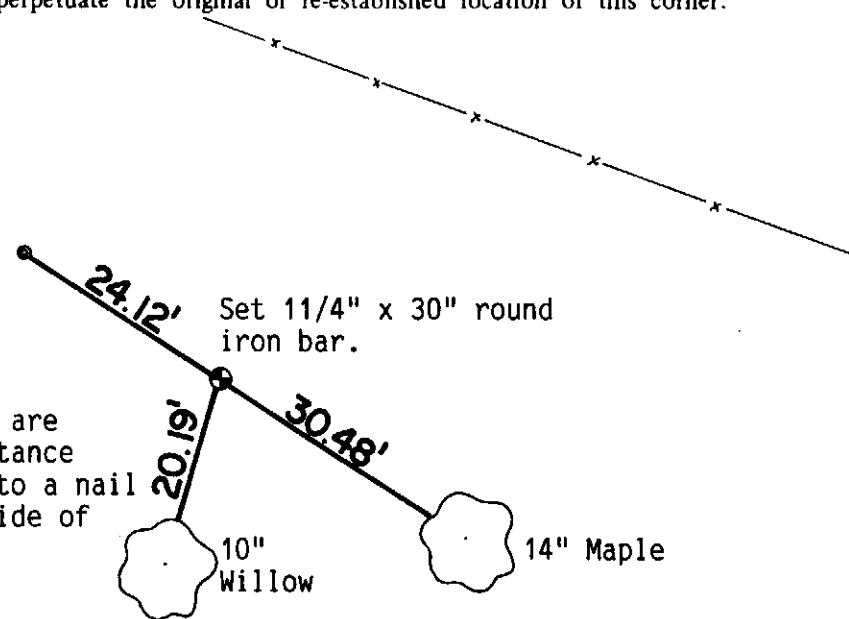
Crew: Meyer, Lobe
Date: October 20, 1993

Witnesses to corner location:

Richard Lobe

Bryan H. Meyer

Set 3/4" x 24" iron pipe.

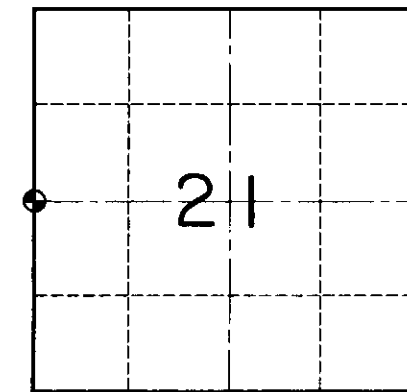
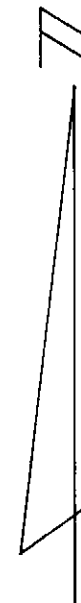


NOTE: Both trees shown are double blazed; the distance shown to each tree is to a nail set in a hack in the side of each tree.

Set 1 1/4" x 30" round iron bar.

10" Willow

14" Maple



● = LOCATION CORNER
T 13 N R 2 W
WISCONSIN

SURVEY CONTROL ORDER

Horizontal	_____
Vertical	_____

WISCONSIN COORDINATE SYSTEM

Corner	East (X)	North (Y)	Elevation (Z)	Zone
Control Sta. Name				

~~City/Village of~~ Town of Stark

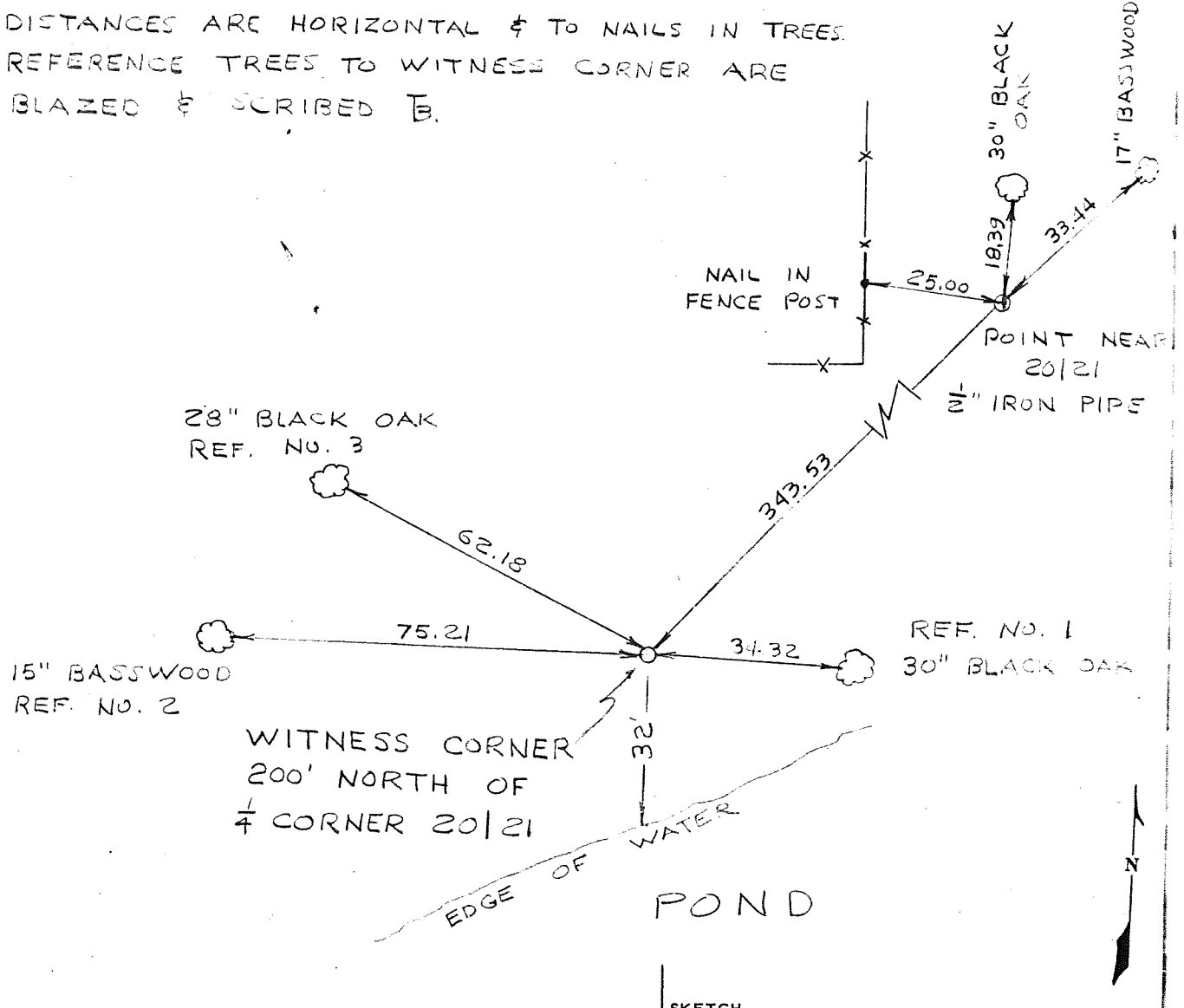
County of Vernon

COUNTRY U. S. A.		TYPE OF MARK 1" IRON PIPE WITH BRASS CAP		STATION WITNESS CORNER TO 20 21 T.13N R.2W	
LOCALITY LA FARGE, WIS.		STAMPING ON MARK WITNESS CORNER 200' N. OF 20 21		AGENCY (CAST IN MARKS) CORPS OF ENGRS.	
LATITUDE		LONGITUDE		ELEVATION (FT) (M)	
(NORTHING)(EASTING) (FT) (M)		(EASTING)(NORTHING) (FT) (M)		DATUM	
579,887.81 (M)		1,832,730.71 (M)		GRID AND ZONE WIS. (SOUTH)	
(NORTHING)(EASTING) (FT) (M)		(EASTING)(NORTHING) (FT) (M)		ESTABLISHED BY (AGENCY) CHICAGO DISTRICT	
				DATE 1965	
				ORDER	

TO OBTAIN GRID AZIMUTH, ADD TO THE GEODETIC AZIMUTH
 TO OBTAIN GRID AZ. (ADD)(SUB.) TO THE GEODETIC AZIMUTH

OBJECT	AZIMUTH OR DIRECTION (GEODETIC)(GRID) (MAGNETIC)	BACK AZIMUTH	GEOD. DISTANCE (METERS) (FEET)	GRID DISTANCE (METERS) (FEET)
POINT NEAR 20 21	N. 43° 16' 28" E.			343.53
REF. No. 1	S. 86° 15' 32" E.			34.32
REF. No. 2	N. 89° 33' 52" W.			75.21
REF. No. 3	N. 62° 40' 12" W.			62.18

DISTANCES ARE HORIZONTAL & TO NAILS IN TREES.
 REFERENCE TREES TO WITNESS CORNER ARE
 BLAZED & SCRIBED B.



DA FORM 1959 1 OCT 64

REPLACES DA FORMS 1959 AND 1960, 1 FEB 57, WHICH ARE OBSOLETE.

DESCRIPTION OR RECOVERY OF HORIZONTAL CONTROL STATION (TM 5-237)