

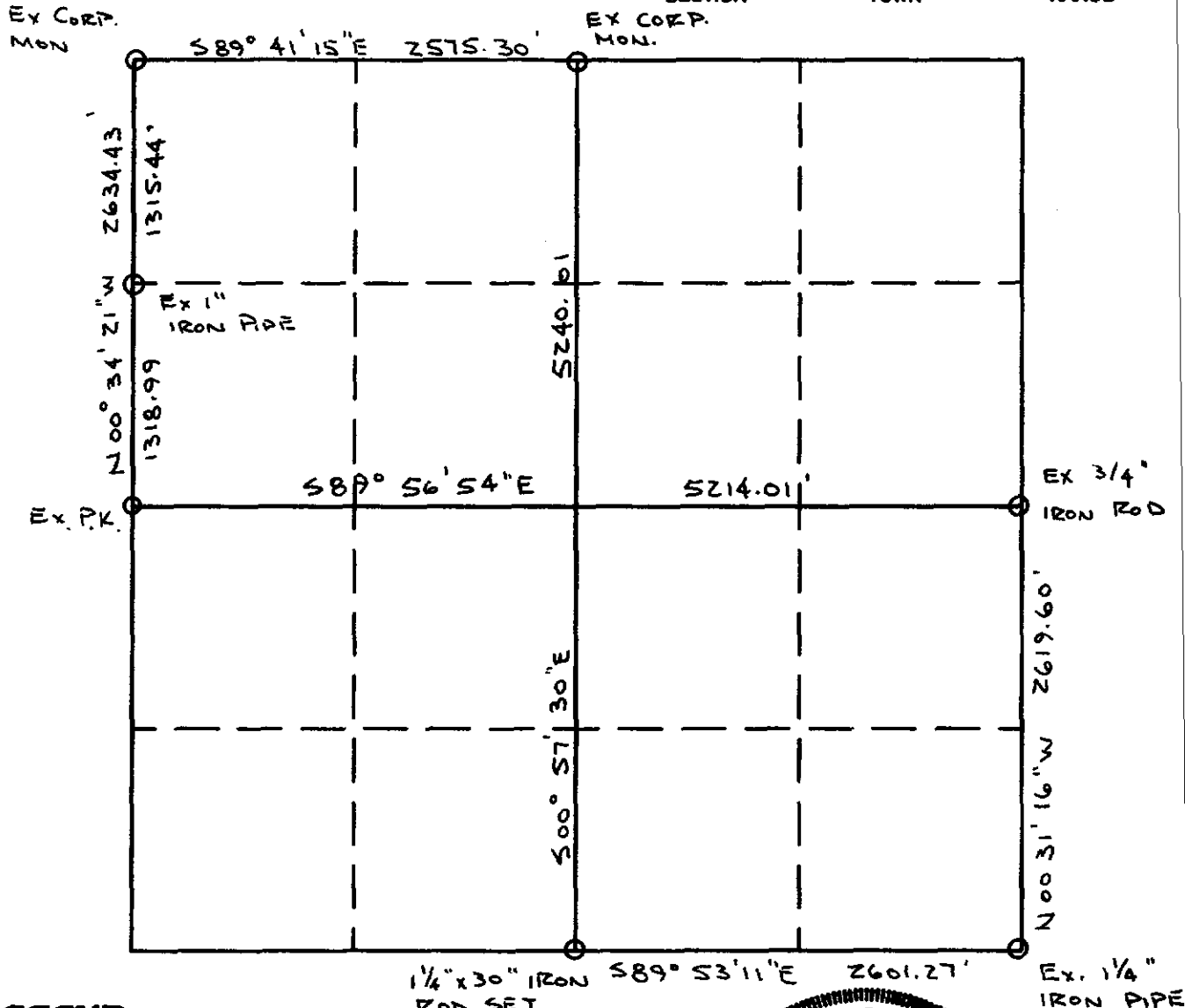
PROJECT # 380102	SCALE: 1" = 1000 FEET	FILE # 38-27-18
FIELD BOOK # 1237	DRAWN BY KZZ	SHEET # 1 OF 1
PAGES # 14-20	CHECKED BY KZZ	SIDE # 1 OF 1
SURVEYOR: MID-STATE ASSOCIATES, INC. 1230 SOUTH BOULEVARD BARABOO, WI 53913 (808 356-2771)	<b>MSA</b> BARABOO, WISCONSIN 53913 © 1993 MID-STATE ASSOCIATES	CLIENT:

**SECTION SUMMARY & INDEX**




28  
SECTION

13N  
TOWN

ZW  
RANGE



**LEGEND**

-  HARRISON CAST IRON MONUMENT
-  STONE OR CONCRETE MONUMENT
-  OTHER (AS NOTED)



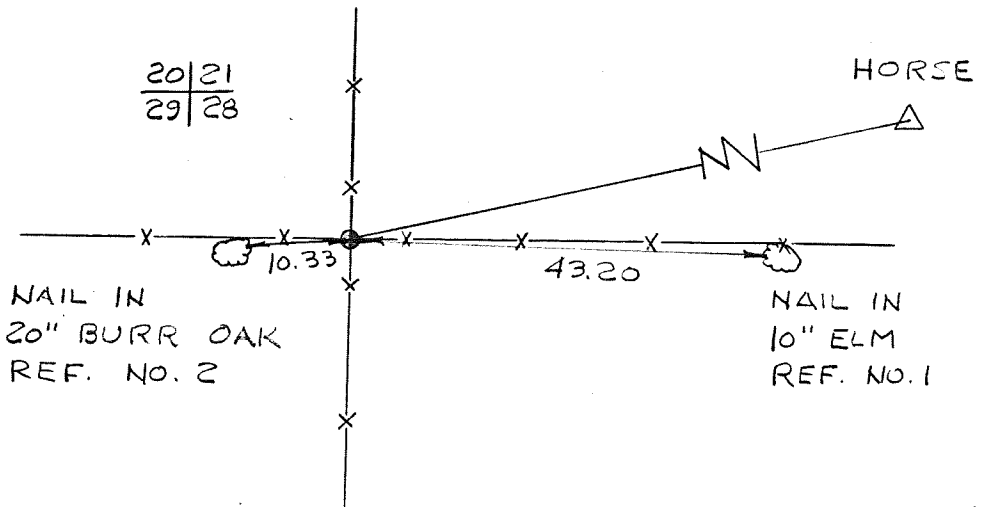
*Kerry R. Ziegler* 12-18-02

COUNTRY U. S. A.		TYPE OF MARK 2" IRON PIPE WITH BRASS CAP		STATION SECTION CORNER		20 21 T. 13N. 29 28 R. 2W	
LOCALITY LA FARGE, WIS		STAMPING ON MARK 20 21 29 28		AGENCY (CAST IN MARKS) CORPS OF ENGRS.		ELEVATION 902.88 (FT) (M)	
LATITUDE		LONGITUDE		DATUM		DATUM MSL 1929 Adj.	
(NORTHING)(EASTING) 577,061.52	(FT) (M)	(EASTING)(NORTHING) 1,832,726.49	(FT) (M)	GRID AND ZONE WIS. (SOUTH)		ESTABLISHED BY (AGENCY) CHICAGO DISTRICT	
(NORTHING)(EASTING)	(FT) (M)	(EASTING)(NORTHING)	(FT) (M)	GRID AND ZONE		DATE 1965	ORDER

TO OBTAIN GRID AZIMUTH, ADD TO THE GEODETIC AZIMUTH  
TO OBTAIN GRID AZ. (ADD)(SUB.) TO THE GEODETIC AZIMUTH

OBJECT	AZIMUTH OR DIRECTION		BACK AZIMUTH	GEOD. DISTANCE		GRID DISTANCE	
	(GEODETIC)	(GRID) (MAGNETIC)		(METERS)	(FEET)	(METERS)	(FEET)
"HORSE"		N. 76° 29' 51" E				1245.65	
REF. No. 1		EAST				43.20	
REF. No. 2		WEST				10.33	

DISTANCES ARE HORIZONTAL.  
TREES ARE BLAZED & SCRIBED  $\bar{B}$   
USE TRAV. STA. "HORSE" FOR A BACKSIGHT.



SKETCH

DA FORM 1959  
1 OCT 64

REPLACES DA FORMS 1959  
AND 1960, 1 FEB 57, WHICH  
ARE OBSOLETE.

DESCRIPTION OR RECOVERY OF HORIZONTAL CONTROL STATION  
(TM 5-237)