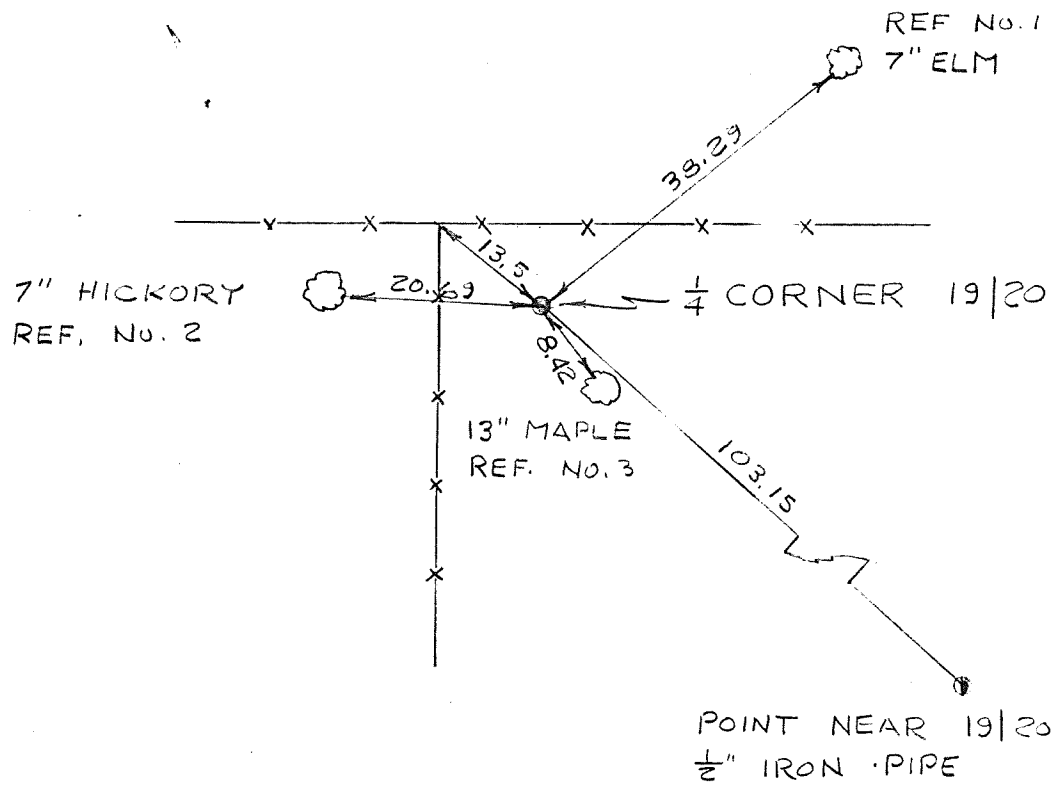


COUNTRY U. S. A.		TYPE OF MARK 2" IRON PIPE WITH BRASS CAP		STATION 1/4 CORNER 19 20		T. 13 N. R. 2 W.	
LOCALITY LA FARGE, WIS.		STAMPING ON MARK 19 20		AGENCY (CAST IN MARKS) CORPS OF ENGRS.		ELEVATION (FT) (M)	
LATITUDE		LONGITUDE		DATUM		DATUM	
(NORTHING)(EASTING) 579,775.53	(FT) (M)	(EASTING)(NORTHING) 1,827,498.14	(FT) (M)	GRID AND ZONE WIS. (SOUTH)		ESTABLISHED BY (AGENCY) CHICAGO DISTRICT	
(NORTHING)(EASTING)	(FT) (M)	(EASTING)(NORTHING)	(FT) (M)	GRID AND ZONE		DATE 1965	ORDER

TO OBTAIN GRID AZIMUTH, ADD TO THE GEODETIC AZIMUTH  
 TO OBTAIN GRID AZ. (ADD)(SUB.) TO THE GEODETIC AZIMUTH

OBJECT	AZIMUTH OR DIRECTION		BACK AZIMUTH	GEOD. DISTANCE		GRID DISTANCE	
	(GEODETIC)	(GRID) (MAGNETIC)		(METERS)	(FEET)	(METERS)	(FEET)
POINT NEAR 19 20	S. 49° 30' - 01" E.					103.15	
REF. No. 1	N. 51° 35' - 59" E.					38.29	
REF. No. 2	N. 86° 52' - 01" W.					20.69	
REF. No. 3	S. 36° 25' - 01" E.					8.42	

DISTANCES ARE HORIZONTAL & TO NAILS IN THE TREES, TREES ARE BLAZED & SCRIBED B.  
 TRAV. STA. "HORSE" CAN BE USED FOR A BACKSIGHT IN THE WINTER.



SKETCH