

VERNON COUNTY

CERTIFIED U.S. PUBLIC LAND SURVEY MONUMENT RECORD

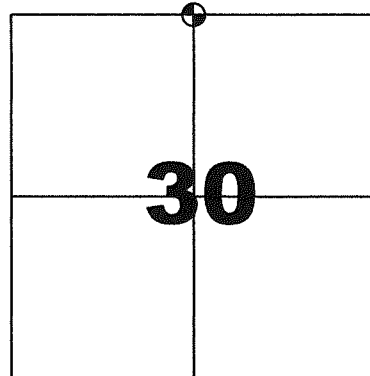
INSTRUCTIONS: THIS RECORD SHALL SHOW THE LOCATION OF THE CORNER AND SHALL INCLUDE ALL OF THE FOLLOWING ELEMENTS (A-1)

(A) IDENTIFY THE CORNER BY REFERENCE TO THE U.S. PUBLIC LAND SURVEY SYSTEM
NORTH QUARTER CORNER SECTION 30, T13N, R2W

- ⊕ = CORNER MONUMENT RESTORED - 1.25" OD IRON PIPE FOUND, REPLACED WITH 2" IRON PIPE WITH BRASS CAP
 LUNDE MONUMENT
 WITNESSES TO CORNER LOCATION
 1) SEAN M. WALSH
 2)
 3)

VERNON COUNTY COORDINATES
 NORTHING: 158363.869
 EASTING: 762368.206

BASIS OF BEARINGS AND COORDINATES:
 WISCRS VERNON, NAD 83(2011)



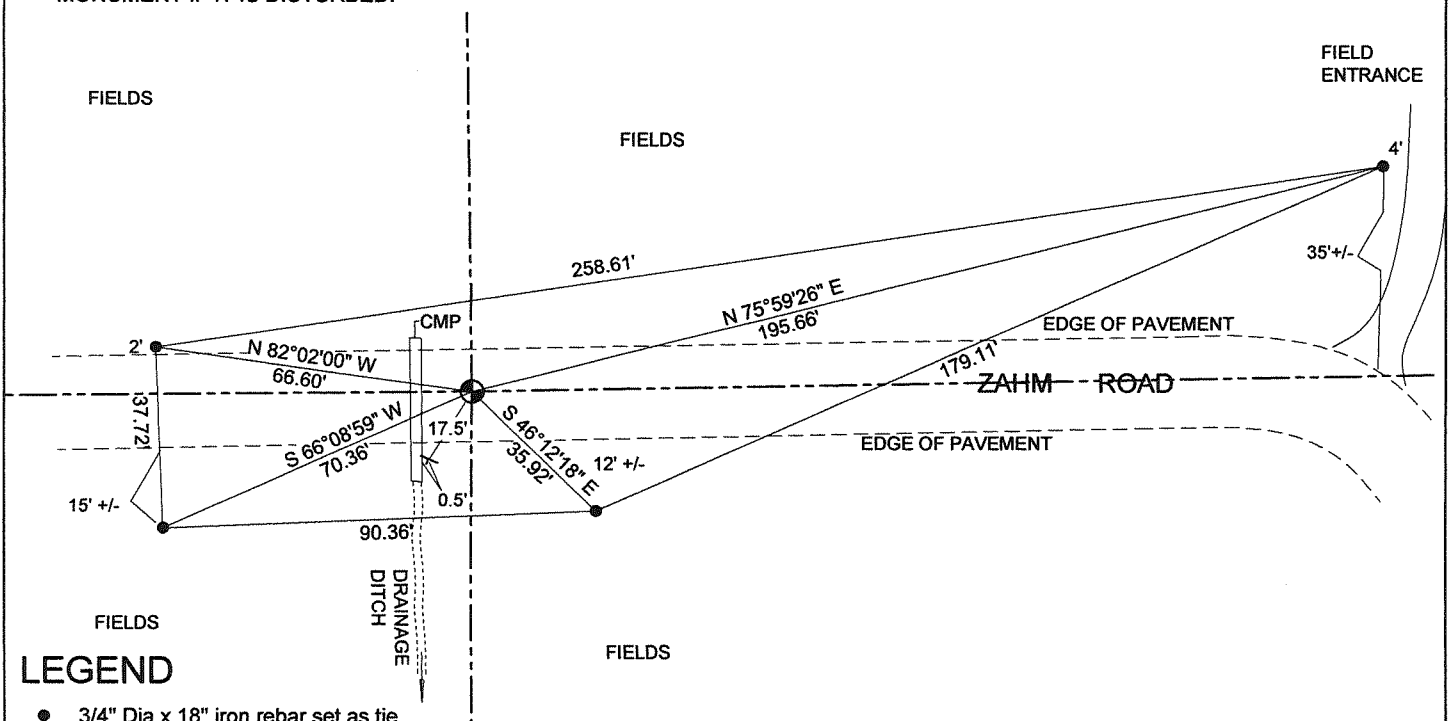
NORTH QUARTER CORNER

SECTION 30 , TOWN 13 NORTH, RANGE 2 WEST



(C) IN THE PLAN VIEW DRAWING BELOW, PROVIDE REFERENCE TO AT LEAST 4 WITNESS MONUMENTS OR, IF THE LOCATION IS WITHIN A MUNICIPALITY, TO AT LEAST 2 WITNESS MONUMENTS. (WITNESS MONUMENTS SHALL BE MADE OF CONCRETE, NATURAL STONE, IRON OR OTHER EQUALLY DURABLE MATERIAL) DESCRIBE WITNESS MONUMENTS

(D) SHOW A PLAN VIEW DRAWING, DEPICTING THE RELEVANT MONUMENTS AND REFERENCE TIES, WHICH IS SUFFICIENTLY DETAILED TO ENABLE ACCURATE RELOCATION OF THE CORNER MONUMENT IF IT IS DISTURBED.



LEGEND

- 3/4" Dia x 18" iron rebar set as tie
- ⊕ 1.25" od iron pipe found, set 2" iron pipe with brass cap Lund monument
- ├ Vernon County Survey Marker Sign on steel channel post

NOT TO SCALE

VERNON COUNTY

CERTIFIED U.S. PUBLIC LAND SURVEY MONUMENT RECORD

RECOVERY PROCEDURES:

(E) A DESCRIPTION OF ANY RECORD EVIDENCE, MONUMENT EVIDENCE, OCCUPATIONAL EVIDENCE, TESTIMONIAL EVIDENCE OR ANY OTHER MATERIAL EVIDENCE CONSIDERED BY THE SURVEYOR, AND WHETHER THE MONUMENT WAS FOUND OR PLACED;

CORNER HISTORY:

ORIGINAL GOV'T SURVEY, ALFRED BROWN, 1846

1873 BS MOORE MEASURED TO CORNER FOR SUBDIVISION OF SECTION 30. NO MONUMENTATION OR WITNESS NOTED

1896 KNOWER REPORTS CORNER LOST, RESET AT MID POINT OF SECTION LINE, NOTED ONE TREE, NO EVIDENCE OF WHICH REMAINS.

1907 RISTOW SURVEY SUBDIVISION OF PARTS OF SECTION 19, NO MONUMENTATION OR WITNESSES IDENTIFIED

1983 JANIAK PLAT OF SURVEY IN SECTION 19 AND TIE SHEET SHOWING 1" IRON PIPE PLACED. FENCES AND PRIOR TIES SHOWN BY JANIAK NO LONGER EXIST.

1991 CORNELL PERFORMED TWO SURVEYS IN SECTION 19 SHOWING 1" IRON PIPE FOUND AND ACCEPTED

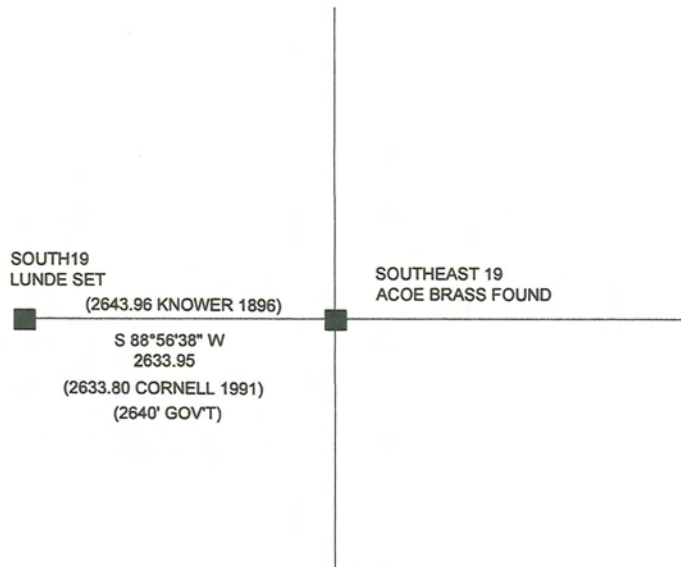
2005 ZICK SURVEY IN SECTION 30, 1" IRON PIPE FOUND AND ACCEPTED

I LOCATED THE 1.25" OD IRON PIPE AS ILLUSTRATED ON JANIAK TIE SHEET AND DOCUMENTED BY OTHERS SHOWN ABOVE. I ACCEPT THIS AS THE CORRECT LOCATION AND MONUMENT AND PERPETUATE AS SHOWN.

(F) WHETHER THE CORNER WAS RESTORED THROUGH ACCEPTANCE OF AN OBLITERATED EVIDENCE LOCATION OR A FOUND PERPETUATED LOCATION;

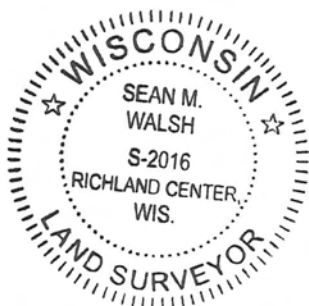
FOUND PERPETUATED LOCATION

(G) WHETHER THE CORNER WAS REESTABLISHED THROUGH LOST-CORNER PROPORTIONATE METHODS; IF SO, S HOW THE DIRECTIONS AND DISTANCES TO OTHER PUBLIC LAND SURVEY CORNERS WHICH WERE USED AS EVIDENCE OR USED FOR PROPORTIONING IN DETERMINING THE CORNER LOCATION;



SURVEYOR'S CERTIFICATE: CHAPTER 7.08 (3) (I)

THE UNDERSIGNED HEREBY CERTIFIES THAT THE U.S. PUBLIC LAND SURVEY MONUMENT RECORD SHOWN WAS DETERMINED BY THEM OR UNDER THEIR DIRECTION AND IS CORRECT AND COMPLETE TO THE BEST OF THEIR KNOWLEDGE AND BELIEF.



Sean M. Walsh

9/17/15

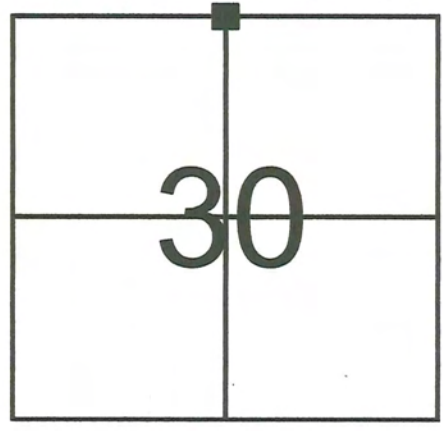
DATE CERTIFIED

VERNON COUNTY COORDINATE FORM
Addendum To
U.S. PUBLIC LAND SURVEY MONUMENT RECORD

INSTRUCTIONS: THIS RECORD FORM SHOULD BE USED WHEN COORDINATES ARE PROVIDED FOR A PUBLIC LAND SURVEY CORNER AND SHALL INCLUDE ALL OF THE FOLLOWING ELEMENTS (A-D) UNLESS INDICATED AS OPTIONAL

(A) IDENTIFY THE CORNER BY REFERENCE TO THE U.S. PUBLIC LAND SURVEY SYSTEM IN DIAGRAM AT RIGHT

■ = CORNER MONUMENT



T 13 N, R 2 E/W

(B) COORDINATES:

VERNON COUNTY (U.S. FEET)

NORTHING (Y): 158,363.869
EASTING (X): 762,368.206

GEOGRAPHIC (DMS to 4 decimal places):

LATITUDE: 43°34'53.7742" (N)
LONGITUDE: 90°39'40.2743" (W)

HORIZONTAL DATUM: NAD 83 (2011)

ORTHOMETRIC HT (U.S. ft): _____ (optional)
VERTICAL DATUM: _____

METHOD USED TO COMPUTE COORDINATES (check as applicable):

- RTK Observations from WISCORS Control
- RTK Observations from Passive WI. Ht. Modernization Control
- Static Baselines
- OPUS-RS Solution OPUS-S Solution
- Combination of conventional procedures with GPS observations to set temporary control
 - Single Angle Measurement
 - Closed Traverse Loop

BASE CONTROL USED FOR COORDINATE COMPUTATION:

Station Name	Station Coordinates	Date/Time
STARK S GPS PID DH5161	N: 148,109.956 E: 772,907.4853	7/23/2015 9:17 AM & 8/14/2015 8:58 AM
MA BRENNAN GPS PID DH5160	N: 148,602.507 E: 748,776.104	SAME
STARK E GPS PID DH5147	N: 159,415.294 E: 789,358.871	SAME
STARK W GPS PID DH5162	N: 169,096.441 E: 760,343.022	SAME

* Please List Any Additional Control Stations Used/Notes/Information on Back of Form

(C) REASON FOR COORDINATE SUBMITTAL (check one):

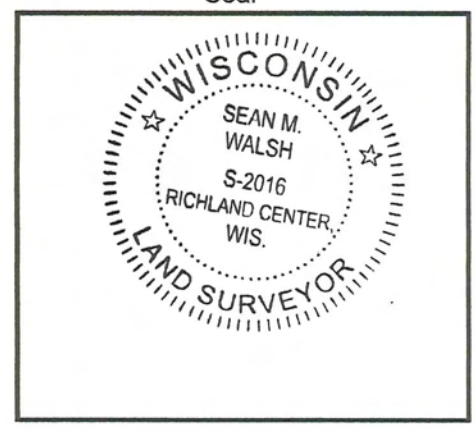
- Being Filed With a New U.S. PLS Monument Record
 - Or-
 - To Correct the Coordinates Listed on a Previously Filed PLS Monument Record
 - To Provide Coordinates for a Previously Filed PLS Monument Record without Coordinates
 - To Provide Supplemental Coordinates for Previously Filed U.S. Public Land Survey Monument Record
- R.L.S. & DATE OF PLS MONUMENT RECORD: _____

(D) AGENT(S) PERFORMING GPS OBSERVATIONS & COORDINATE COMPUTATION

- 1) SEAN M. WALSH, PLS
- 2) _____

I, SEAN M. WALSH, PLS
CERTIFY THAT THE COORDINATES PROVIDED ON THIS RECORD WERE DETERMINED BY ME OR UNDER MY DIRECTION AND CONTROL AND THAT THIS COORDINATE SUBMISSION FORM IS CORRECT AND COMPLETE TO THE BEST OF MY KNOWLEDGE AND BELIEF.

Seal



Sean Walsh 9/12/15
SIGNATURE DATE

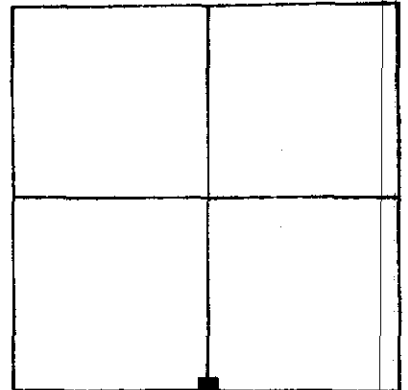
U. S. PUBLIC LAND SURVEY MONUMENT RECORD
VERNON County, Wisconsin.

Basis for monument location.

Researched records and could find no evidence of the corner being marked since the 1800's. Set corner at the occupied location. Allevidence located and testimony acquired proves that this is the corner.

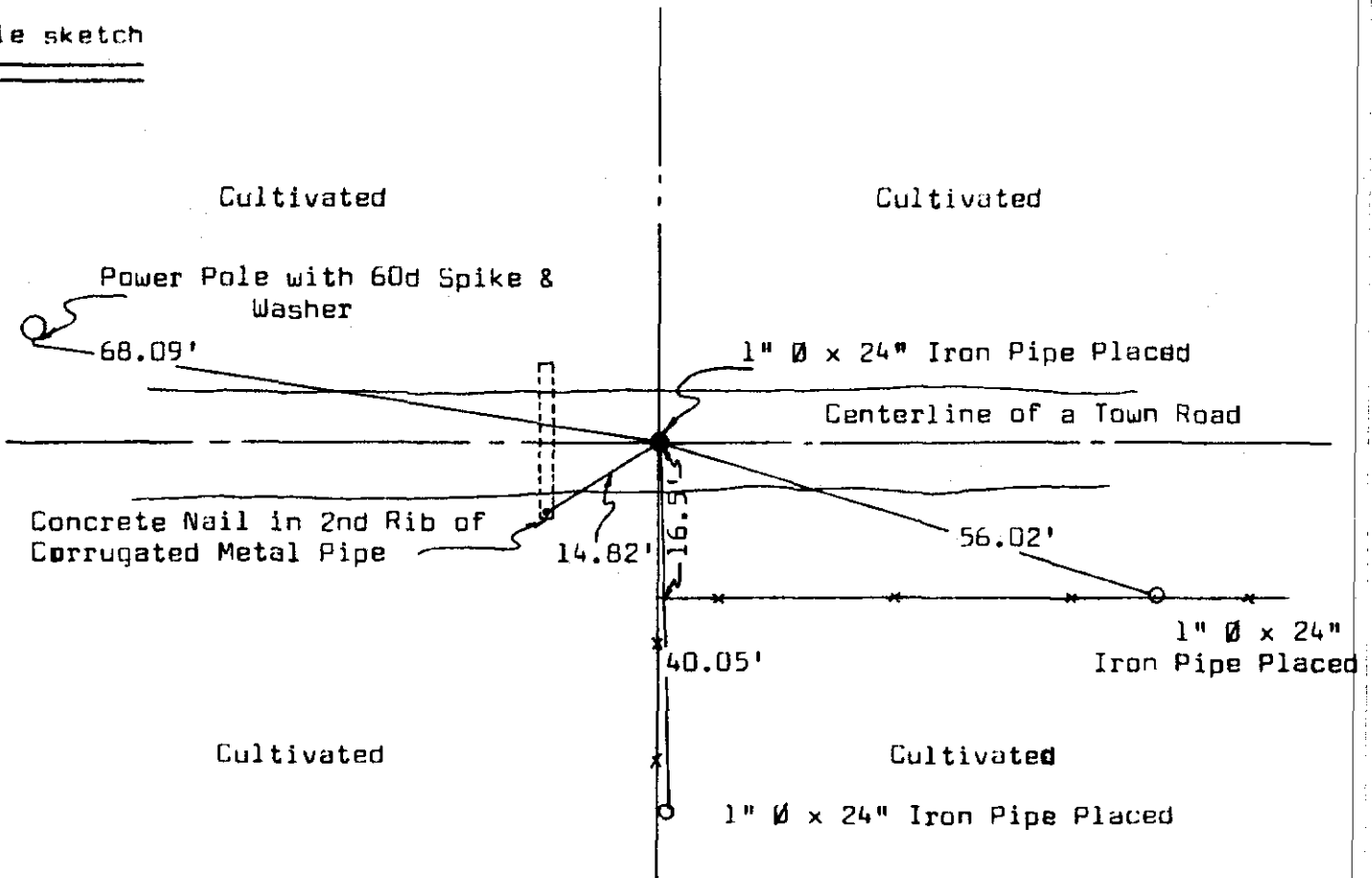


Section 19, T13N, R2W



Corner Location
 (Indicate by - ■)

Tie sketch



I, Matthew J. Janiak Certify that the corner location shown hereon this record was determined by me or under my direction and control and that this U. S. Public Land Survey Monument Record is correct and complete to the best of my knowledge and belief.

8/11/83
 Date

Matthew J. Janiak
 Registered Land Surveyor

