

VERNON COUNTY CERTIFIED U.S. PUBLIC LAND SURVEY MONUMENT RECORD

INSTRUCTIONS: THIS RECORD SHALL SHOW THE LOCATION OF THE CORNER AND SHALL INCLUDE ALL OF THE FOLLOWING ELEMENTS (A-I)

(A) IDENTIFY THE CORNER BY REFERENCE TO THE U.S. PUBLIC LAND SURVEY SYSTEM

■ = CORNER MONUMENT RESTORED

WITNESSES TO CORNER LOCATION:

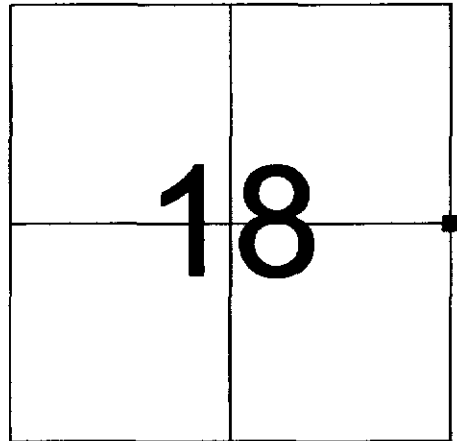
- 1) Robert M. Lampman
- 2) Jessica A. Zamor

GEOGRAPHIC COORDINATES - WGS84/GRS80 - NAD83(CORS96)

Lat: 43°36'11.56493" N
Lon: 90°39'04.93231" W

VERNON COUNTY COORDINATES - NAD83(CORS96) - SURVEY FEET

NORTHING: 166244.787
EASTING: 764957.223



SECTION 18
TOWN 13 NORTH, RANGE 2 WEST

(B) DESCRIBE ANY RECORD EVIDENCE, MONUMENT EVIDENCE, OCCUPATIONAL EVIDENCE, TESTIMONIAL EVIDENCE OR ANY OTHER MATERIAL EVIDENCE YOU CONSIDERED, AND WHETHER THE MONUMENT WAS FOUND OR PLACED.

Found existing U.S. Army Corps of Engineers monument. Accepted said monument as the best available evidence of the original government corner location.

The A.C.O.E. iron pipe witness for the corner was searched for and not found. The A.C.O.E. monument is recorded as being 123.67' west of the centerline of a road. The A.C.O.E. monument was found to be said distance west of the centerline of a bike trail through the Kickapoo Valley Reserve. The A.C.O.E. monument was also found to be in line with remains of the old fence line running to the east.

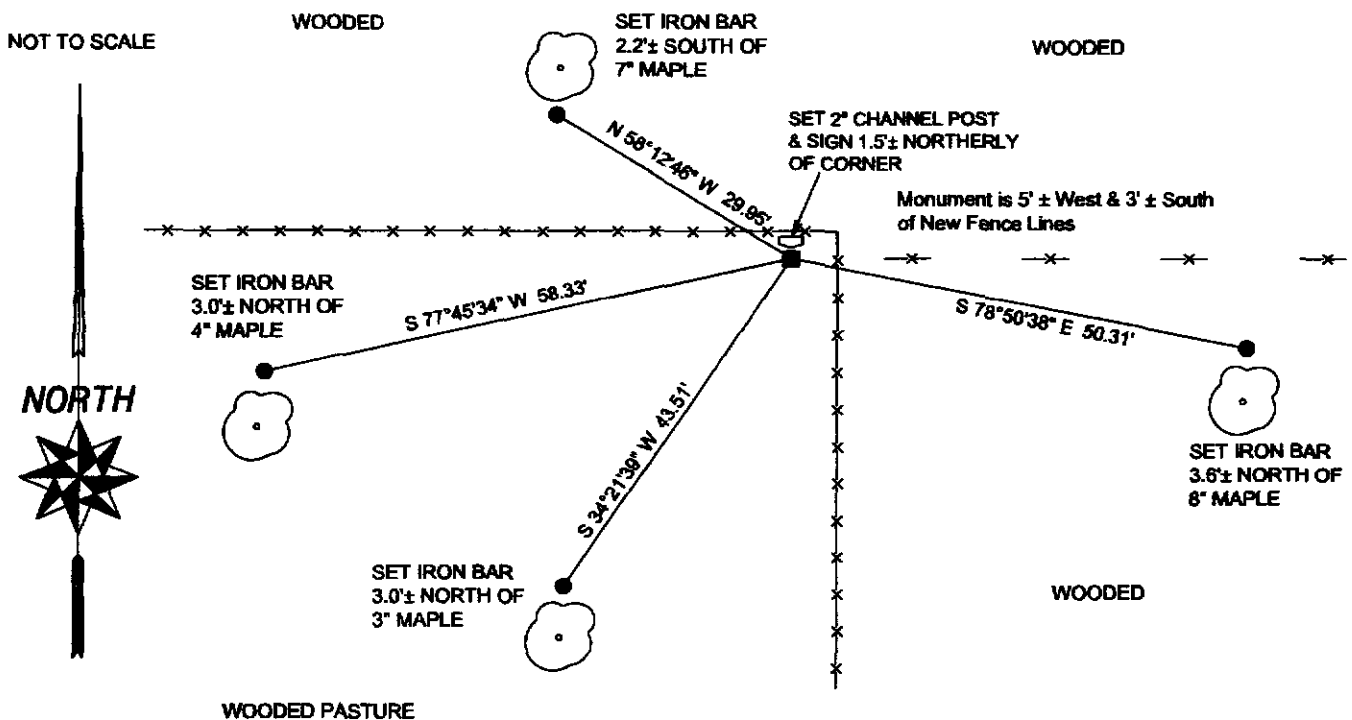
Established new witnesses as shown below.

(C) IN THE PLAN VIEW DRAWING BELOW, PROVIDE REFERENCE TIES TO AT LEAST 4 WITNESS MONUMENTS OR, IF THE LOCATION IS WITHIN A MUNICIPALITY, TO AT LEAST 2 WITNESS MONUMENTS. (WITNESS MONUMENTS SHALL BE MADE OF CONCRETE, NATURAL STONE, IRON, OR OTHER EQUALLY DURABLE MATERIAL.) DESCRIBE WITNESS MONUMENTS.

(D) SHOW A PLAN VIEW DRAWING, DEPICTING THE RELEVANT MONUMENTS AND REFERENCE TIES, WHICH IS SUFFICIENTLY DETAILED TO ENABLE ACCURATE RELOCATION OF THE CORNER MONUMENT IF IT IS DISTURBED.

LEGEND

- FOUND EXISTING U.S. ARMY CORPS OF ENGINEERS MONUMENT - 3-1/2" BRASS CAP ON IRON PIPE
- SET 3/4" x 30" ROUND IRON BAR AS WITNESS MONUMENT



(E) DESCRIBE ANY MATERIAL DISCREPANCY BETWEEN THE LOCATION OF THE CORNER AS RESTORED OR REESTABLISHED AND THE LOCATION OF THAT CORNER AS PREVIOUSLY RESTORED OR REESTABLISHED BY DISTANCE AND DIRECTION. SHOW THE DISCREPANCY ON THE PLAN VIEW DRAWING UNDER (D), ABOVE. SHOW THE DISTANCES BETWEEN THE CORNER AS PREVIOUSLY RESTORED OR REESTABLISHED AND (1) THE CORNER AS RESTORED OR REESTABLISHED, AND (2) TO AT LEAST 2 OF THE WITNESS MONUMENTS AS SHOWN ON THE DRAWING IN (D), ABOVE.

N/A

(F) WAS THE CORNER RESTORED THROUGH ACCEPTANCE OF (1) AN OBLITERATED EVIDENCE LOCATION, OR (2) A FOUND PERPETUATED LOCATION?

(2) A FOUND PERPETUATED LOCATION

(G & H) WAS THE CORNER REESTABLISHED THROUGH LOST CORNER PROPORTIONATE METHODS? IF SO SHOW THE METHOD, INCLUDING THE DIRECTIONS AND DISTANCES TO OTHER PUBLIC LAND SURVEY CORNERS USED AS EVIDENCE OR USED FOR PROPORTIONING IN DETERMINING THE CORNER LOCATION.

N/A

(**) ANY ADDITIONAL INFORMATION RELATED TO CORNER LOCATION

CORNER HISTORY:

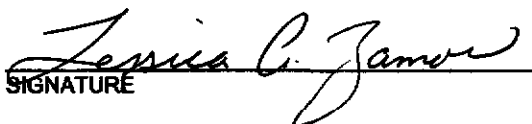
-Original government corner location established by A.L. Brown in 1846.

-W.H.Knowler renewed the corner in 1887 as part of a subdivision of Section 18, T13N, R2W. Volume 1 of Resurveys, Number 400.

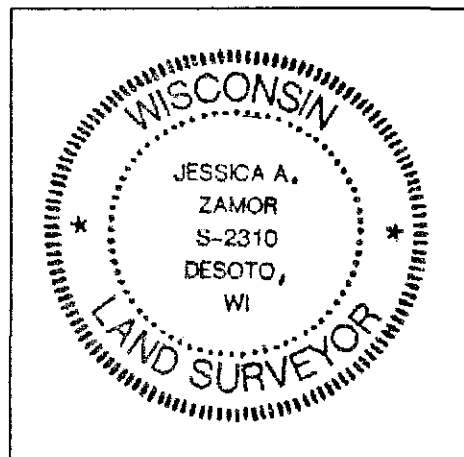
-U.S.Army Corps of Engineers set a 2" iron pipe with a brass cap at the corner in 1965. The A.C.O.E. reestablished the corner location on a straight line between the Southeast and Northeast corners of Section 18 and "in the general line of a slightly bowed east & west fence line."

AFFIX LAND SURVEYOR SEAL

(I) I, JESSICA A. ZAMOR, CERTIFY THAT THE LOCATION SHOWN ON THIS RECORD WAS DETERMINED BY ME OR UNDER MY DIRECTION AND CONTROL AND THAT THIS U.S. PUBLIC LAND SURVEY MONUMENT RECORD IS CORRECT AND COMPLETE TO THE BEST OF MY KNOWLEDGE AND BELIEF.


SIGNATURE

5-04-2005
DATE

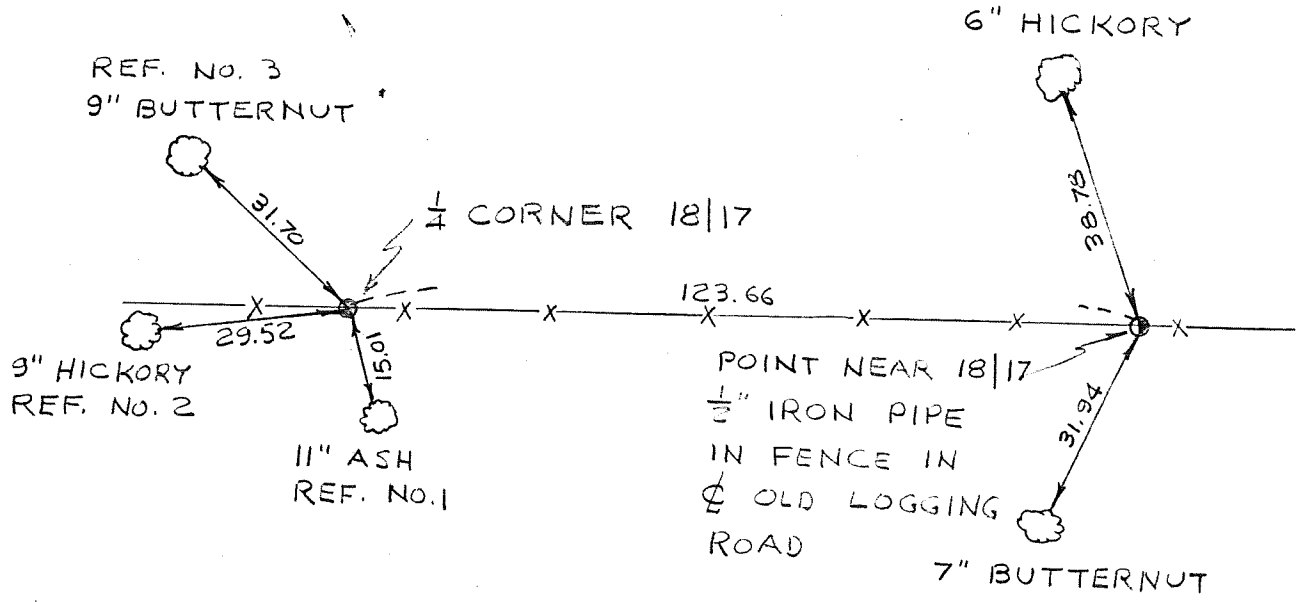


COUNTRY U. S. A.		TYPE OF MARK 2" IRON PIPE WITH BRASS CAP		STATION ¼ CORNER 18 17		T. 13 N. R. 2 W.	
LOCALITY LA FARGE, WIS.		STAMPING ON MARK 18 17		AGENCY (CAST IN MARKS) CORPS OF ENGRS.		ELEVATION (FT) (M)	
LATITUDE		LONGITUDE		DATUM		DATUM	
(NORTHING)(EASTING) 584,999.39 (M)	(FT)	(EASTING)(NORTHING) 1,827,500.93 (M)	(FT)	GRID AND ZONE WIS. (SOUTH)		ESTABLISHED BY (AGENCY) CHICAGO DISTRICT	
(NORTHING)(EASTING)	(FT)	(EASTING)(NORTHING)	(FT)	GRID AND ZONE		DATE 1965	ORDER

TO OBTAIN GRID AZIMUTH, ADD TO THE GEODETIC AZIMUTH
 TO OBTAIN GRID AZ. (ADD)(SUB.) TO THE GEODETIC AZIMUTH

OBJECT	AZIMUTH OR DIRECTION (GEODETIC)(GRID) (MAGNETIC)		BACK AZIMUTH	GEOD. DISTANCE (METERS) (FEET)		GRID DISTANCE (METERS) (FEET)	
	°	' "		°	' "	°	' "
POINT NEAR 18 17	S. 89° 30' - 24" E						123.66
REF. No. 1	S. 14° 55' - 24" E						15.01
REF. No. 2	S. 82° 54' - 36" W						29.52
REF. No. 3	N. 46° 08' - 01" W						31.70

REFERENCE DISTANCES ARE HORIZONTAL & TO NAILS IN TREES. REFERENCE TREES TO ¼ CORNER ARE BLAZED & SCRIBED E.



SKETCH