

VERNON COUNTY

CERTIFIED U.S. PUBLIC LAND SURVEY MONUMENT RECORD

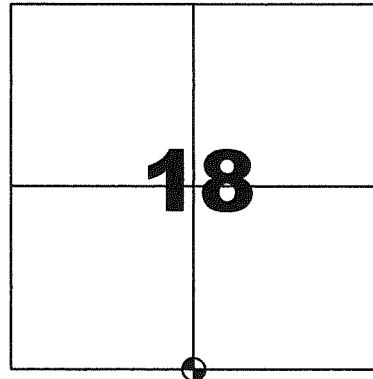
INSTRUCTIONS: THIS RECORD SHALL SHOW THE LOCATION OF THE CORNER AND SHALL INCLUDE ALL OF THE FOLLOWING ELEMENTS (A-1)

(A) IDENTIFY THE CORNER BY REFERENCE TO THE U.S. PUBLIC LAND SURVEY SYSTEM
SOUTH QUARTER CORNER SECTION 18, T13N, R2W

- ⊙ = CORNER MONUMENT RESTORED - FOUND 3/4" IRON REBAR, REPLACED WITH 2" IRON PIPE LUNDE MONUMENT WITNESSES TO CORNER LOCATION
- 1) SEAN M. WALSH
 - 2)
 - 3)

VERNON COUNTY COORDINATES
 NORTHING: 163,577.076
 EASTING: 762,394.897

BASIS OF BEARINGS AND COORDINATES:
 WISCRS VERNON, NAD 83(2011)



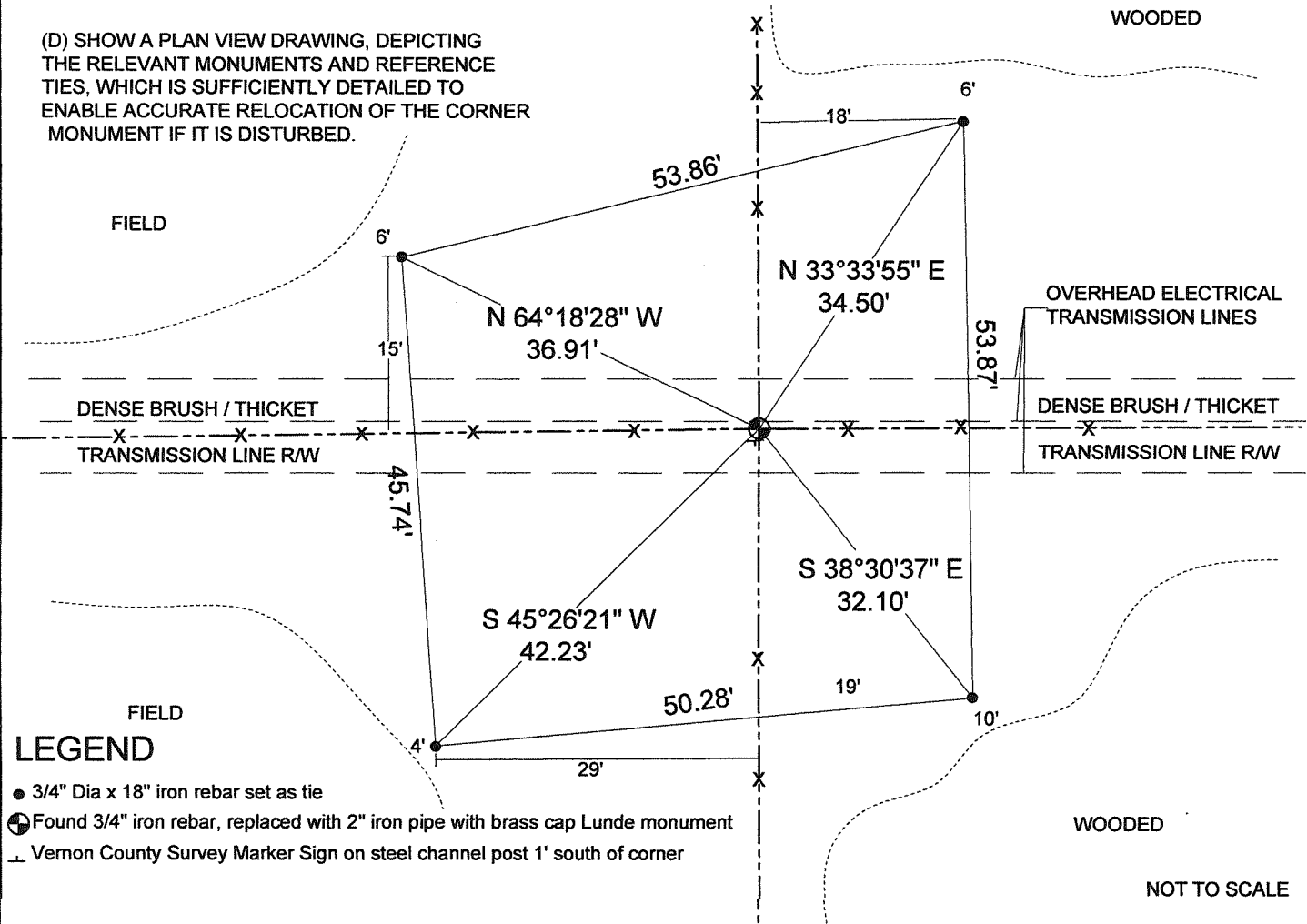
SOUTH QUARTER CORNER

SECTION 18 , TOWN 13 NORTH, RANGE 2 WEST



(C) IN THE PLAN VIEW DRAWING BELOW, PROVIDE REFERENCE TO AT LEAST 4 WITNESS MONUMENTS OR, IF THE LOCATION IS WITHIN A MUNICIPALITY, TO AT LEAST 2 WITNESS MONUMENTS. (WITNESS MONUMENTS SHALL BE MADE OF CONCRETE, NATURAL STONE, IRON OR OTHER EQUALLY DURABLE MATERIAL) DESCRIBE WITNESS MONUMENTS

(D) SHOW A PLAN VIEW DRAWING, DEPICTING THE RELEVANT MONUMENTS AND REFERENCE TIES, WHICH IS SUFFICIENTLY DETAILED TO ENABLE ACCURATE RELOCATION OF THE CORNER MONUMENT IF IT IS DISTURBED.



LEGEND

- 3/4" Dia x 18" iron rebar set as tie
- ⊙ Found 3/4" iron rebar, replaced with 2" iron pipe with brass cap Lunde monument
- ⊥ Vernon County Survey Marker Sign on steel channel post 1' south of corner

VERNON COUNTY

CERTIFIED U.S. PUBLIC LAND SURVEY MONUMENT RECORD

RECOVERY PROCEDURES:

(E) A DESCRIPTION OF ANY RECORD EVIDENCE, MONUMENT EVIDENCE, OCCUPATIONAL EVIDENCE, TESTIMONIAL EVIDENCE OR ANY OTHER MATERIAL EVIDENCE CONSIDERED BY THE SURVEYOR, AND WHETHER THE MONUMENT WAS FOUND OR PLACED;

CORNER HISTORY:

ORIGINAL GOV'T SURVEY, ALFRED BROWN, 1846

1887 KNOWER FOUND GOV CORNER FOR SURVEY IN SECTION 18, NO ADDITIONAL WITNESSES OR MONUMENTATION NOTED

1896 KNOWER FOUND GOV CORNER FOR SURVEY IN SECTION 19, NO ADDITIONAL WITNESSES OR MONUMENTATION NOTED

1907 RISTOW FOUND GOV CORNER ON SURVEY IN SECTION 19, NO ADDITIONAL REFERNCES NOTED

2005 ZAMOR APPEARS TO PROTRACT SECTION BASED ON CORNER LOCATION ON SURVEY IN SECTION 18, NO MONUMENTATION IDENTIFIED

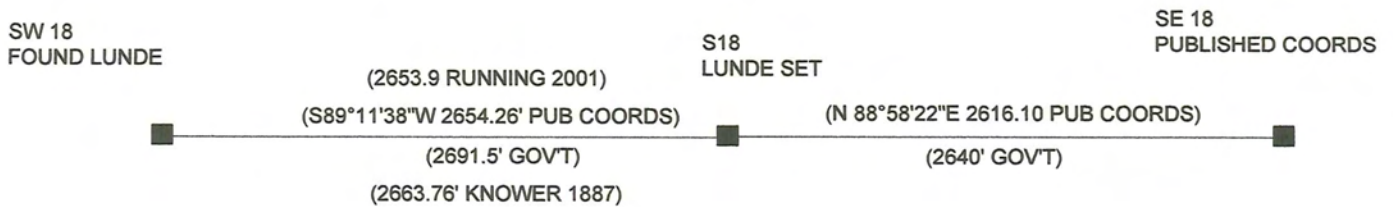
2001 RUNNING FOUND AND ACCEPTED 3/4" IRON REBAR ON SURVEY IN SECTION 19.

I LOCATED A 3/4" REBAR AT THE LOCATION OF PHYSICAL OCCUPATION. BASED ON CHAIN OF EVIDENCE IN SUPPORT OF MONUMENT AT OCCUPATION AND RECENT ACCEPTANCE BY RUNNING, I HAVE ACCEPTED THE REBAR FOUND AT THE OCCUPIED LOCATION AS THE BEST AVAILABLE EVIDENCE. I HAVE MONUMENTED AND PERPETUATED AS SHOWN.

(F) WHETHER THE CORNER WAS RESTORED THROUGH ACCEPTANCE OF AN OBLITERATED EVIDENCE LOCATION OR A FOUND PERPETUATED LOCATION;

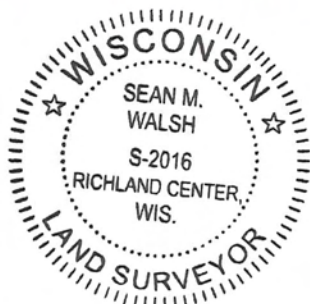
FOUND PERPETUATED LOCATION

(G) WHETHER THE CORNER WAS REESTABLISHED THROUGH LOST-CORNER PROPORTIONATE METHODS; IF SO, S HOW THE DIRECTIONS AND DISTANCES TO OTHER PUBLIC LAND SURVEY CORNERS WHICH WERE USED AS EVIDENCE OR USED FOR PROPORTIONING IN DETERMINING THE CORNER LOCATION;



INVERSES TO PUBLISHED COORDINATES SHOWN FOR COMPARATIVE PURPOSES ONLY NO VALIDATION OF PUBLISHED COORDINATES WAS PERFORMED.

SURVEYOR'S CERTIFICATE: CHAPTER 7.08 (3) (I)



THE UNDERSIGNED HEREBY CERTIFIES THAT THE U.S. PUBLIC LAND SURVEY MONUMENT RECORD SHOWN WAS DETERMINED BY THEM OR UNDER THEIR DIRECTION AND IS CORRECT AND COMPLETE TO THE BEST OF THEIR KNOWLEDGE AND BELIEF.

Sean M. Walsh

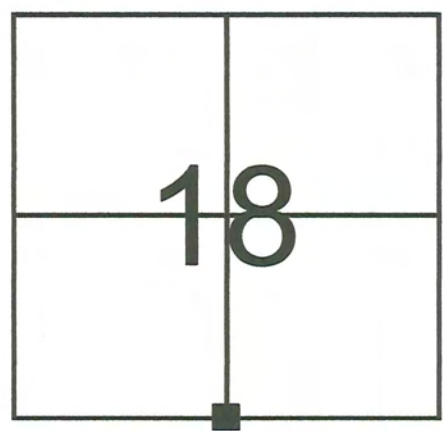
9/17/15
DATE CERTIFIED

VERNON COUNTY COORDINATE FORM
Addendum To
U.S. PUBLIC LAND SURVEY MONUMENT RECORD

INSTRUCTIONS: THIS RECORD FORM SHOULD BE USED WHEN COORDINATES ARE PROVIDED FOR A PUBLIC LAND SURVEY CORNER AND SHALL INCLUDE ALL OF THE FOLLOWING ELEMENTS (A-D) UNLESS INDICATED AS OPTIONAL

(A) IDENTIFY THE CORNER BY REFERENCE TO THE U.S. PUBLIC LAND SURVEY SYSTEM IN DIAGRAM AT RIGHT

■ = CORNER MONUMENT



(B) COORDINATES:

VERNON COUNTY (U.S. FEET)

NORTHING (Y): 163,577.076
EASTING (X): 762,394.897

GEOGRAPHIC (DMS to 4 decimal places):

LATITUDE: 43°35'45.2581" (N)
LONGITUDE: 90°39'39.8075" (W)

HORIZONTAL DATUM: NAD 83 (2011)

ORTHOMETRIC HT (U.S. ft): _____ (optional)
VERTICAL DATUM: _____

METHOD USED TO COMPUTE COORDINATES (check as applicable):

- RTK Observations from WISCORS Control
- RTK Observations from Passive WI. Ht. Modernization Control
- Static Baselines
- OPUS-RS Solution OPUS-S Solution
- Combination of conventional procedures with GPS observations to set temporary control
 - Single Angle Measurement Closed Traverse Loop

BASE CONTROL USED FOR COORDINATE COMPUTATION:

Station Name	Station Coordinates	Date/Time
STARK S GPS PID DH5161	N: 148,109.956 E: 772,907.4853	7/24/2015 11:30 AM & 8/25/2015 1:10 PM
MA BRENNAN GPS PID DH5160	N: 148,602.507 E: 748,776.104	SAME
STARK E GPS PID DH5147	N: 159,415.294 E: 789,358.871	SAME
STARK W GPS PID DH5162	N: 169,096.441 E: 760,343.022	SAME

* Please List Any Additional Control Stations Used/Notes/Information on Back of Form

(C) REASON FOR COORDINATE SUBMITTAL (check one):

- Being Filed With a New U.S. PLS Monument Record
 - Or-
 - To Correct the Coordinates Listed on a Previously Filed PLS Monument Record
 - To Provide Coordinates for a Previously Filed PLS Monument Record without Coordinates
 - To Provide Supplemental Coordinates for Previously Filed U.S. Public Land Survey Monument Record
- R.L.S. & DATE OF PLS MONUMENT RECORD: _____

(D) AGENT(S) PERFORMING GPS OBSERVATIONS & COORDINATE COMPUTATION

- 1) SEAN M. WALSH, PLS
- 2) _____

I, SEAN M. WALSH, PLS
CERTIFY THAT THE COORDINATES PROVIDED ON THIS RECORD WERE DETERMINED BY ME OR UNDER MY DIRECTION AND CONTROL AND THAT THIS COORDINATE SUBMISSION FORM IS CORRECT AND COMPLETE TO THE BEST OF MY KNOWLEDGE AND BELIEF.

Sean M. Walsh 9/17/15
SIGNATURE DATE

