

VERNON COUNTY CERTIFIED U.S. PUBLIC LAND SURVEY MONUMENT RECORD

INSTRUCTIONS: THIS RECORD SHALL SHOW THE LOCATION OF THE CORNER AND SHALL INCLUDE ALL OF THE FOLLOWING ELEMENTS (A-I)

(A) IDENTIFY THE CORNER BY REFERENCE TO THE U.S. PUBLIC LAND SURVEY SYSTEM

■ = CORNER MONUMENT RESTORED

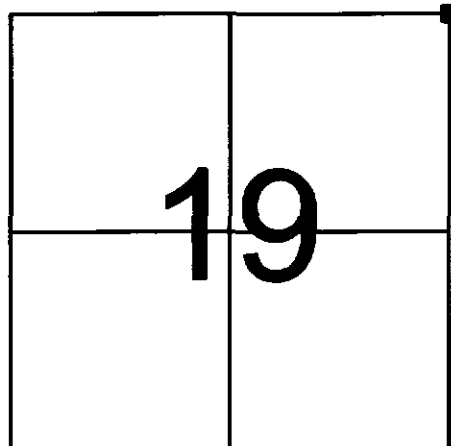
WITNESSES TO CORNER LOCATION:

- 1) RONALD D. JASPERSON
- 2) JASON L. CANCE

VERNON COUNTY COORDINATES

NORTHING: 163,623.98

EASTING: 765,010.56



SECTION 19 , TOWN 13 NORTH, RANGE 2 WEST

(B) DESCRIBE ANY RECORD EVIDENCE, MONUMENT EVIDENCE, OCCUPATIONAL EVIDENCE, TESTIMONIAL EVIDENCE OR ANY OTHER MATERIAL EVIDENCE YOU CONSIDERED, AND WHETHER THE MONUMENT WAS FOUND OR PLACED.

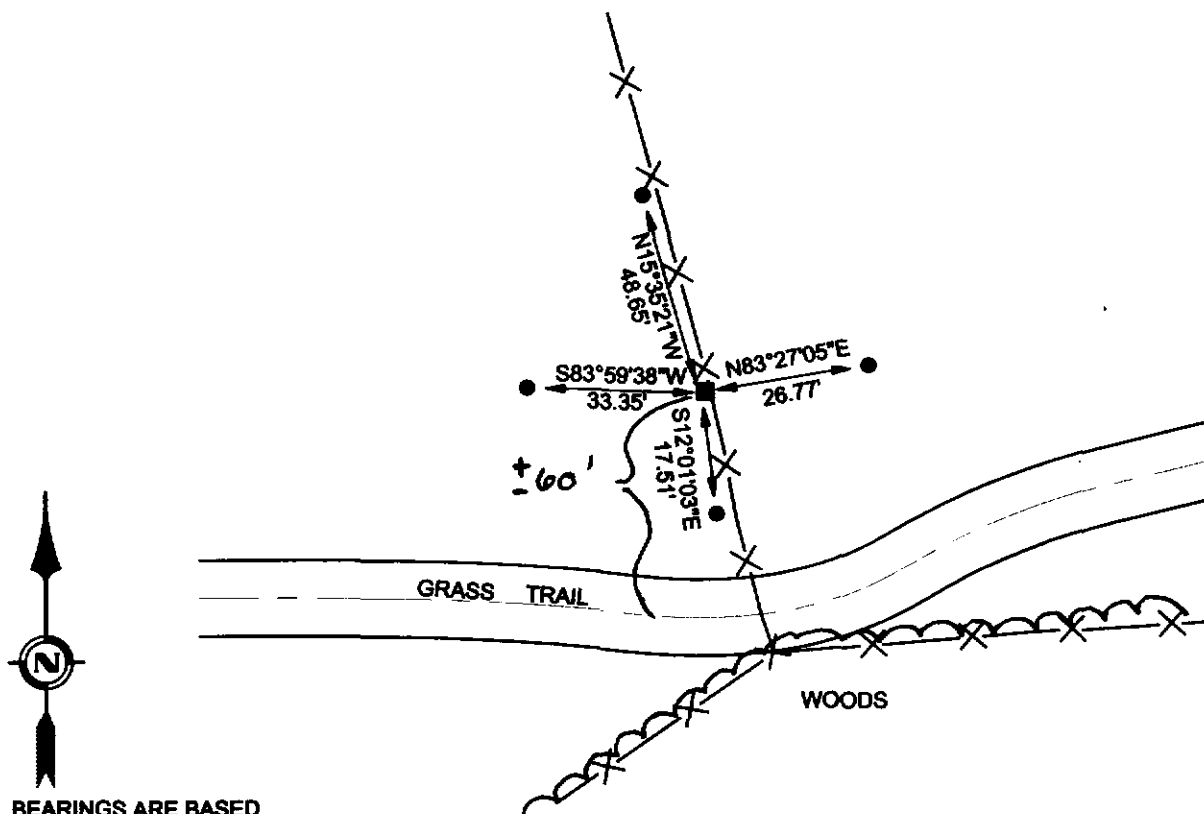
FOUND ARMY CORPS BRASS CAP MONUMENT SET ON AUGUST 31, 1965, BY ARMY CORPS.

(C) IN THE PLAN VIEW DRAWING BELOW, PROVIDE REFERENCE TIES TO AT LEAST 4 WITNESS MONUMENTS OR, IF THE LOCATION IS WITHIN A MUNICIPALITY, TO AT LEAST 2 WITNESS MONUMENTS. (WITNESS MONUMENTS SHALL BE MADE OF CONCRETE, NATURAL STONE, IRON, OR OTHER EQUALLY DURABLE MATERIAL.) DESCRIBE WITNESS MONUMENTS.

(D) SHOW A PLAN VIEW DRAWING, DEPICTING THE RELEVANT MONUMENTS AND REFERENCE TIES, WHICH IS SUFFICIENTLY DETAILED TO ENABLE ACCURATE RELOCATION OF THE CORNER MONUMENT IF IT IS DISTURBED.

LEGEND

- ARMY CORPS BRASS CAP MONUMENT
- 3/4" REBAR



BEARINGS ARE BASED ON THE VERNON COUNTY COORDINATE SYSTEM

(E) DESCRIBE ANY MATERIAL DISCREPANCY BETWEEN THE LOCATION OF THE CORNER AS RESTORED OR REESTABLISHED AND THE LOCATION OF THAT CORNER AS PREVIOUSLY RESTORED OR REESTABLISHED BY DISTANCE AND DIRECTION. SHOW THE DISCREPANCY ON THE PLAN VIEW DRAWING UNDER (D), ABOVE. SHOW THE DISTANCES BETWEEN THE CORNER AS PREVIOUSLY RESTORED OR REESTABLISHED AND (1) THE CORNER AS RESTORED OR REESTABLISHED, AND (2) TO AT LEAST 2 OF THE WITNESS MONUMENTS AS SHOWN ON THE DRAWING IN (D), ABOVE.

N/A

(F) WAS THE CORNER RESTORED THROUGH ACCEPTANCE OF (1) AN OBLITERATED EVIDENCE LOCATION, OR (2) A FOUND PERPETUATED LOCATION?

N/A

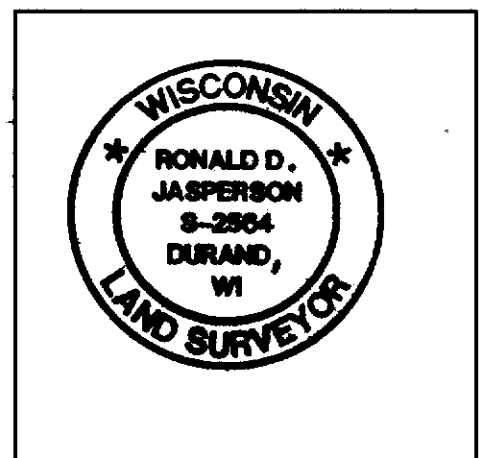
(G & H) WAS THE CORNER REESTABLISHED THROUGH LOST CORNER PROPORTIONATE METHODS? IF SO SHOW THE METHOD, INCLUDING THE DIRECTIONS AND DISTANCES TO OTHER PUBLIC LAND SURVEY CORNERS USED AS EVIDENCE OR USED FOR PROPORTIONING IN DETERMINING THE CORNER LOCATION.

N/A

AFFIX LAND SURVEYOR SEAL

(I) I, RONALD D. JASPERSON CERTIFY THAT THE LOCATION SHOWN ON THIS RECORD WAS DETERMINED BY ME OR UNDER MY DIRECTION AND CONTROL AND THAT THIS U.S. PUBLIC LAND SURVEY MONUMENT RECORD IS CORRECT AND COMPLETE TO THE BEST OF MY KNOWLEDGE AND BELIEF.

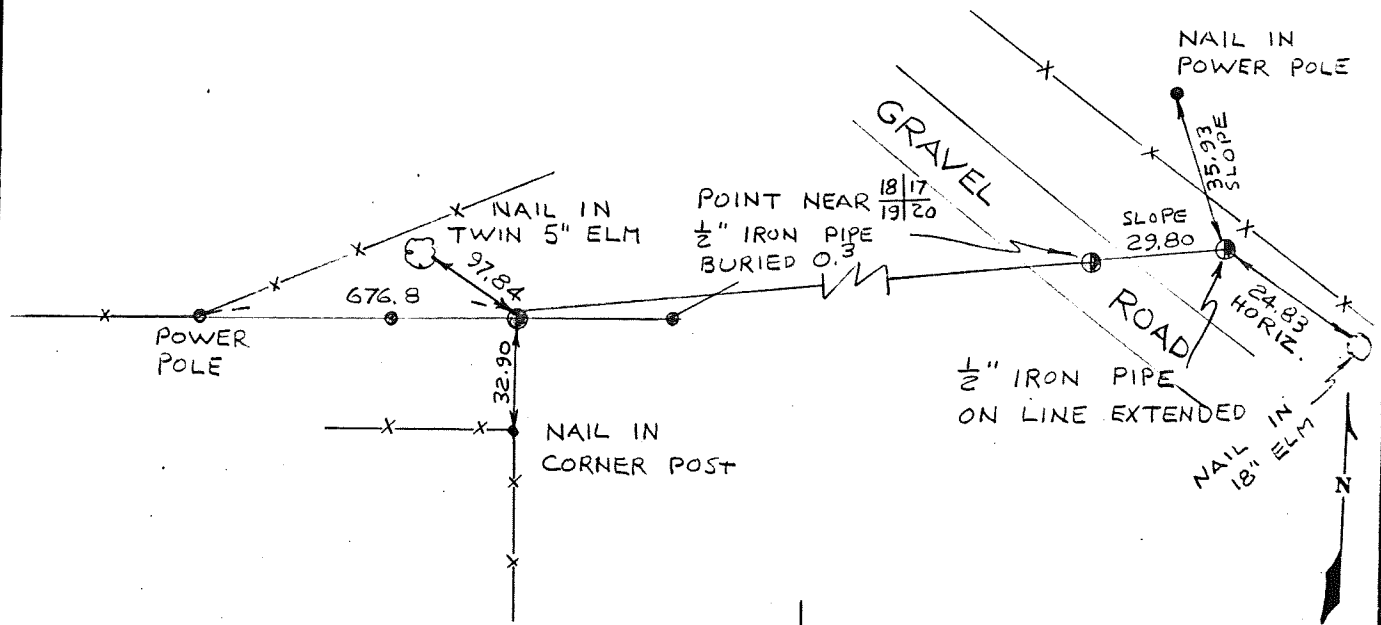
Ronald D. Jaspersen 5-8-02
SIGNATURE DATE



COUNTRY U. S. A.		TYPE OF MARK 2" IRON PIPE WITH BRASS CAP		STATION SECTION CORNER 1817 1920 T. 13 N. R. 2 W.	
LOCALITY LA FARGE, WIS.		STAMPING ON MARK 1817 1920		AGENCY (CAST IN MARKS) CORPS OF ENGRS.	
LATITUDE		LONGITUDE		ELEVATION (FT) (M)	
(NORTHING)(EASTING) 582,375.97 (M)		(EASTING)(NORTHING) 1,827,539.35 (M)		GRID AND ZONE WIS. (SOUTH)	
(NORTHING)(EASTING) (M)		(EASTING)(NORTHING) (M)		ESTABLISHED BY (AGENCY) CHICAGO DISTRICT	
				DATE 1965	
				ORDER	

TO OBTAIN		GRID AZIMUTH, ADD		TO THE GEODETIC AZIMUTH	
TO OBTAIN		GRID AZ. (ADD)(SUB.)		TO THE GEODETIC AZIMUTH	
OBJECT	AZIMUTH OR DIRECTION (GEODETIC)(GRID) (MAGNETIC)	BACK AZIMUTH	GEOD. DISTANCE (METERS) (FEET)	GRID DISTANCE (METERS) (FEET)	
1817	" "	" "			
POINT NEAR 1920	N. 84°-14'-11" E.			767.03	
REF. NO. 1	S. 00°-40'-11" W.			32.90	
REF. NO. 2	N. 55°-27'-49"			97.84	

REFERENCE DISTANCES TO SECTION CORNER ARE HORIZONTAL.
REFERENCE TREE IS BLAZED & SCRIBED B.



SKETCH

DA FORM 1959
1 OCT 64

REPLACES DA FORMS 1959
AND 1960, 1 FEB 57, WHICH
ARE OBSOLETE.

DESCRIPTION OR RECOVERY OF HORIZONTAL CONTROL STATION

(TM 5-237)