



Stock No. 26273

VERNON COUNTY CERTIFIED U.S. PUBLIC LAND SURVEY MONUMENT RECORD

INSTRUCTIONS: THIS RECORD SHALL SHOW THE LOCATION OF THE CORNER AND SHALL INCLUDE ALL OF THE FOLLOWING ELEMENTS (A-I)

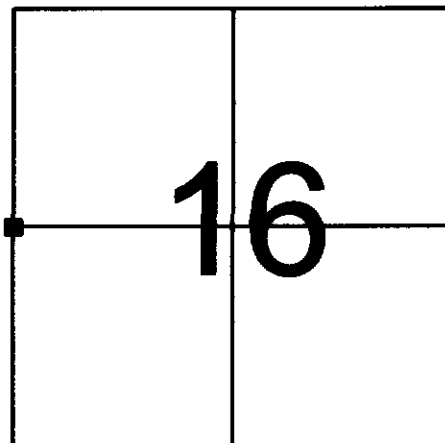
(A) IDENTIFY THE CORNER BY REFERENCE TO THE U.S. PUBLIC LAND SURVEY SYSTEM

■ = CORNER MONUMENT RESTORED

WITNESSES TO CORNER LOCATION:

- 1) RONALD D. JASPERSON
- 2) JASON L. CANCE

VERNON COUNTY COORDINATES
NORTHING: 166,227.52
EASTING: 770,182.69



SECTION 16, TOWN 13 NORTH, RANGE 2 WEST

(B) DESCRIBE ANY RECORD EVIDENCE, MONUMENT EVIDENCE, OCCUPATIONAL EVIDENCE, TESTIMONIAL EVIDENCE OR ANY OTHER MATERIAL EVIDENCE YOU CONSIDERED, AND WHETHER THE MONUMENT WAS FOUND OR PLACED.

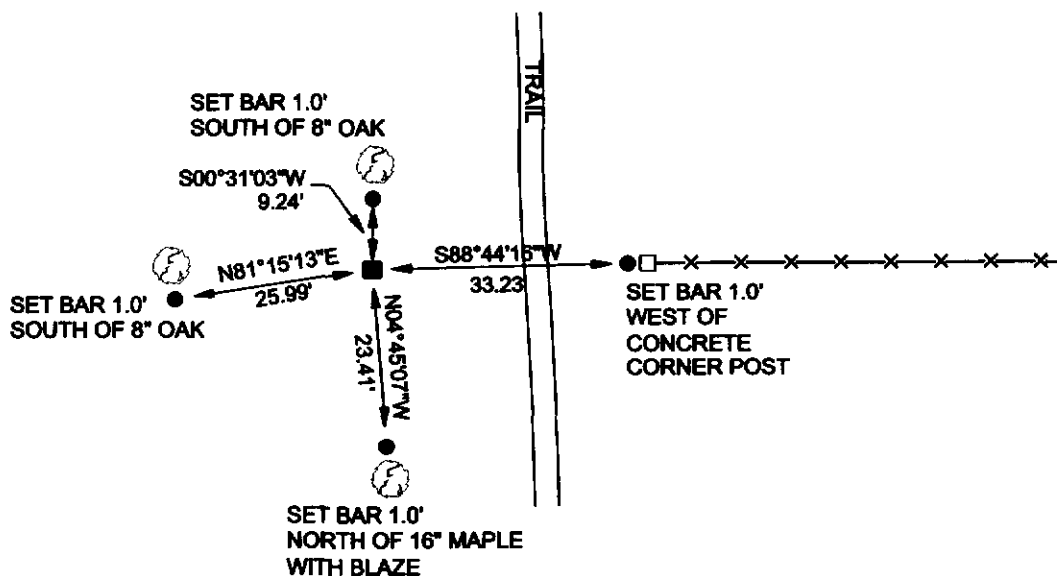
FOUND ARMY CORPS BRASS CAP MONUMENT SET ON AUGUST 29, 1965, BY ARMY CORPS.

(C) IN THE PLAN VIEW DRAWING BELOW, PROVIDE REFERENCE TIES TO AT LEAST 4 WITNESS MONUMENTS OR, IF THE LOCATION IS WITHIN A MUNICIPALITY, TO AT LEAST 2 WITNESS MONUMENTS. (WITNESS MONUMENTS SHALL BE MADE OF CONCRETE, NATURAL STONE, IRON, OR OTHER EQUALLY DURABLE MATERIAL.) DESCRIBE WITNESS MONUMENTS.

(D) SHOW A PLAN VIEW DRAWING, DEPICTING THE RELEVANT MONUMENTS AND REFERENCE TIES, WHICH IS SUFFICIENTLY DETAILED TO ENABLE ACCURATE RELOCATION OF THE CORNER MONUMENT IF IT IS DISTURBED.

LEGEND

- CORPS MONUMENT
- 3/4" REBAR



BEARINGS ARE BASED ON THE VERNON COUNTY COORDINATE SYSTEM

(E) DESCRIBE ANY MATERIAL DISCREPANCY BETWEEN THE LOCATION OF THE CORNER AS RESTORED OR REESTABLISHED AND THE LOCATION OF THAT CORNER AS PREVIOUSLY RESTORED OR REESTABLISHED BY DISTANCE AND DIRECTION. SHOW THE DISCREPANCY ON THE PLAN VIEW DRAWING UNDER (D), ABOVE. SHOW THE DISTANCES BETWEEN THE CORNER AS PREVIOUSLY RESTORED OR REESTABLISHED AND (1) THE CORNER AS RESTORED OR REESTABLISHED, AND (2) TO AT LEAST 2 OF THE WITNESS MONUMENTS AS SHOWN ON THE DRAWING IN (D), ABOVE.

N/A

(F) WAS THE CORNER RESTORED THROUGH ACCEPTANCE OF (1) AN OBLITERATED EVIDENCE LOCATION, OR (2) A FOUND PERPETUATED LOCATION?

N/A

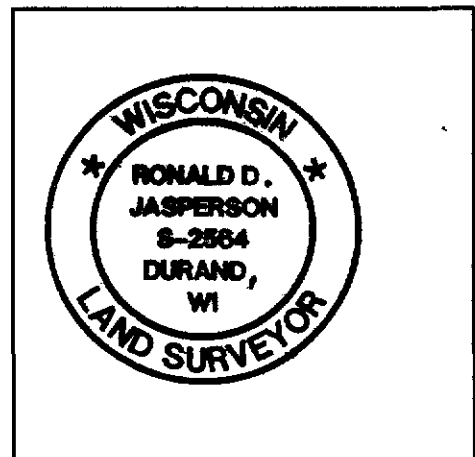
(G & H) WAS THE CORNER REESTABLISHED THROUGH LOST CORNER PROPORTIONATE METHODS? IF SO SHOW THE METHOD, INCLUDING THE DIRECTIONS AND DISTANCES TO OTHER PUBLIC LAND SURVEY CORNERS USED AS EVIDENCE OR USED FOR PROPORTIONING IN DETERMINING THE CORNER LOCATION.

N/A

AFFIX LAND SURVEYOR SEAL

(I) I, RONALD D. JASPERSON, CERTIFY THAT THE LOCATION SHOWN ON THIS RECORD WAS DETERMINED BY ME OR UNDER MY DIRECTION AND CONTROL AND THAT THIS U.S. PUBLIC LAND SURVEY MONUMENT RECORD IS CORRECT AND COMPLETE TO THE BEST OF MY KNOWLEDGE AND BELIEF.

Ronald D. Jaspersen 5-9-02
SIGNATURE DATE



COUNTRY U. S. A.		TYPE OF MARK 2" IRON PIPE WITH BRASS CAP		STATION 1/4 CORNER 17 16		T. 13 N. R. 2 W.	
LOCALITY LA FARGE, WIS.		STAMPING ON MARK 17 16		AGENCY (CAST IN MARKS) CORPS OF ENGRS.		ELEVATION (FT) (M)	
LATITUDE		LONGITUDE		DATUM		DATUM	
(NORTHING)(EASTING) 584,933.10	(FT) (M)	(EASTING)(NORTHING) 1,832,725.50	(FT) (M)	GRID AND ZONE WIS. (SOUTH)		ESTABLISHED BY (AGENCY) CHICAGO DISTRICT	
(NORTHING)(EASTING)	(FT) (M)	(EASTING)(NORTHING)	(FT) (M)	GRID AND ZONE		DATE 1965	ORDER

TO OBTAIN GRID AZIMUTH, ADD TO THE GEODETIC AZIMUTH
 TO OBTAIN GRID AZ. (ADD)(SUB.) TO THE GEODETIC AZIMUTH

OBJECT	AZIMUTH OR DIRECTION (GEODETIC)(GRID) (MAGNETIC)	BACK AZIMUTH	GEOD. DISTANCE		GRID DISTANCE	
			(METERS)	(FEET)	(METERS)	(FEET)
SILO	S. 79° 56' 35" W.	° ' "			1020.86	
HONEY	N. 61° 47' 39" W.				3587.36	
REF. NO. 1	S. 04° 27' 25" E.				24.95	
REF. NO. 2	N. 02° 33' 35" E.				44.50	
REF. NO. 3	S. 88° 21' 55" E.				33.05	

REFERENCE DISTANCES ARE HORIZONTAL & TO NAILS IN THE TREES. TREES ARE BLAZED & SCRIBED T. TRAV. STAS. SILO OR HONEY CAN BE USED FOR A BACK SIGHT.

