



Stock No. 26273

## VERNON COUNTY CERTIFIED U.S. PUBLIC LAND SURVEY MONUMENT RECORD

INSTRUCTIONS: THIS RECORD SHALL SHOW THE LOCATION OF THE CORNER AND SHALL INCLUDE ALL OF THE FOLLOWING ELEMENTS (A-I)

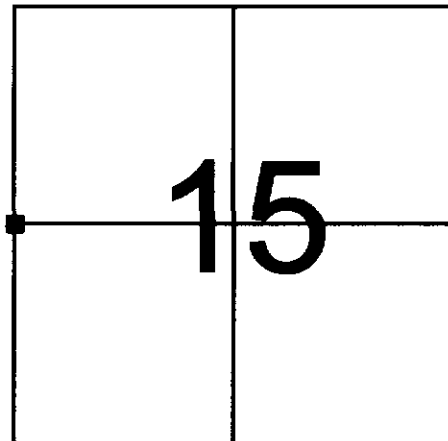
(A) IDENTIFY THE CORNER BY REFERENCE TO THE U.S. PUBLIC LAND SURVEY SYSTEM

■ = CORNER MONUMENT RESTORED

WITNESSES TO CORNER LOCATION:

- 1) RONALD D. JASPERSON
- 2) JASON L. CANCE

VERNON COUNTY COORDINATES  
NORTHING: 166,179.39  
EASTING: 775,486.72



SECTION 15, TOWN 13 NORTH, RANGE 2 WEST

(B) DESCRIBE ANY RECORD EVIDENCE, MONUMENT EVIDENCE, OCCUPATIONAL EVIDENCE, TESTIMONIAL EVIDENCE OR ANY OTHER MATERIAL EVIDENCE YOU CONSIDERED, AND WHETHER THE MONUMENT WAS FOUND OR PLACED.

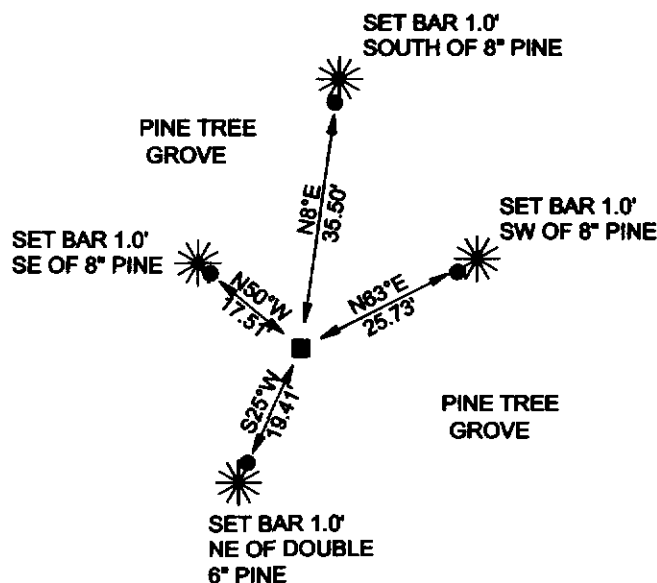
FOUND ARMY CORPS BRASS CAP MONUMENT SET ON NOVEMBER 8, 1965, BY ARMY CORPS.

(C) IN THE PLAN VIEW DRAWING BELOW, PROVIDE REFERENCE TIES TO AT LEAST 4 WITNESS MONUMENTS OR, IF THE LOCATION IS WITHIN A MUNICIPALITY, TO AT LEAST 2 WITNESS MONUMENTS. (WITNESS MONUMENTS SHALL BE MADE OF CONCRETE, NATURAL STONE, IRON, OR OTHER EQUALLY DURABLE MATERIAL.) DESCRIBE WITNESS MONUMENTS.

(D) SHOW A PLAN VIEW DRAWING, DEPICTING THE RELEVANT MONUMENTS AND REFERENCE TIES, WHICH IS SUFFICIENTLY DETAILED TO ENABLE ACCURATE RELOCATION OF THE CORNER MONUMENT IF IT IS DISTURBED.

### LEGEND

- CORPS MONUMENT
- 3/4" REBAR



BEARINGS ARE BASED ON THE VERNON COUNTY COORDINATE SYSTEM

(E) DESCRIBE ANY MATERIAL DISCREPANCY BETWEEN THE LOCATION OF THE CORNER AS RESTORED OR REESTABLISHED AND THE LOCATION OF THAT CORNER AS PREVIOUSLY RESTORED OR REESTABLISHED BY DISTANCE AND DIRECTION. SHOW THE DISCREPANCY ON THE PLAN VIEW DRAWING UNDER (D), ABOVE. SHOW THE DISTANCES BETWEEN THE CORNER AS PREVIOUSLY RESTORED OR REESTABLISHED AND (1) THE CORNER AS RESTORED OR REESTABLISHED, AND (2) TO AT LEAST 2 OF THE WITNESS MONUMENTS AS SHOWN ON THE DRAWING IN (D), ABOVE.

N/A

(F) WAS THE CORNER RESTORED THROUGH ACCEPTANCE OF (1) AN OBLITERATED EVIDENCE LOCATION, OR (2) A FOUND PERPETUATED LOCATION?

N/A

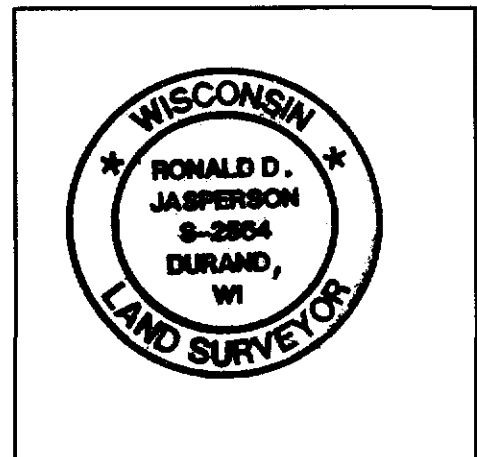
(G & H) WAS THE CORNER REESTABLISHED THROUGH LOST CORNER PROPORTIONATE METHODS? IF SO SHOW THE METHOD, INCLUDING THE DIRECTIONS AND DISTANCES TO OTHER PUBLIC LAND SURVEY CORNERS USED AS EVIDENCE OR USED FOR PROPORTIONING IN DETERMINING THE CORNER LOCATION.

N/A

AFFIX LAND SURVEYOR SEAL

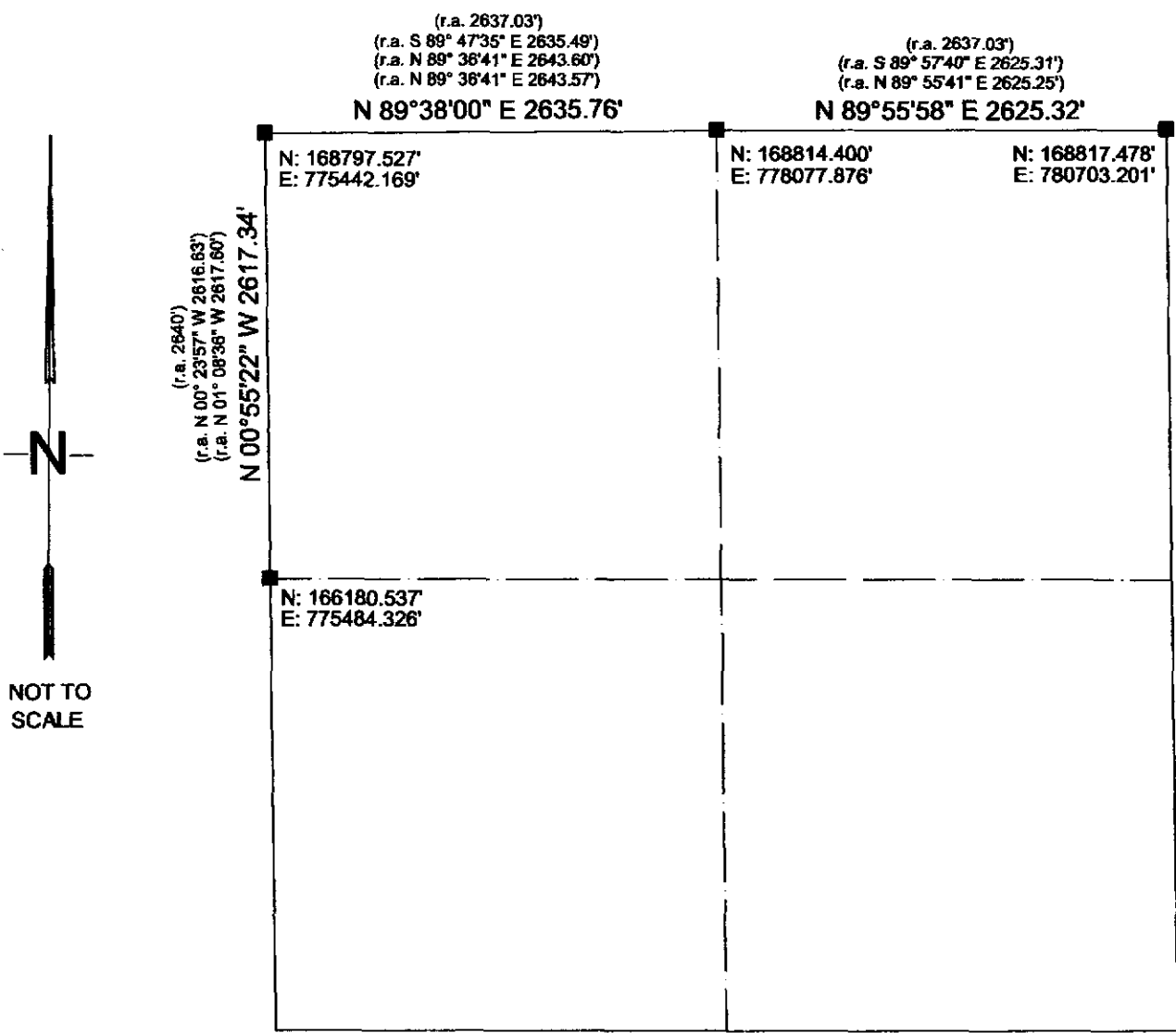
(I) I, RONALD D. JASPERSON, CERTIFY THAT THE LOCATION SHOWN ON THIS RECORD WAS DETERMINED BY ME OR UNDER MY DIRECTION AND CONTROL AND THAT THIS U.S. PUBLIC LAND SURVEY MONUMENT RECORD IS CORRECT AND COMPLETE TO THE BEST OF MY KNOWLEDGE AND BELIEF.

*Ronald D. Jaspersen* 5-9-02  
SIGNATURE DATE



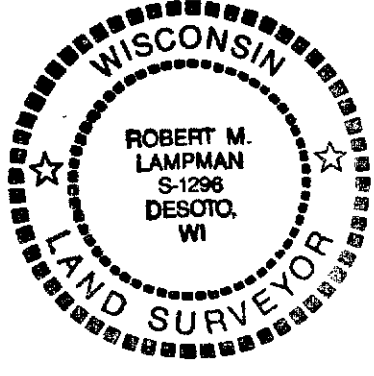
RECEIVED  
 MAR 3 2004  
 BY: *G. Jacobson*

VERNON COUNTY SECTION DATA SHEET  
 SECTION 15, TOWN 13 NORTH, RANGE 2 WEST



NOT TO SCALE

Bearings are referenced to Grid North, Vernon County Coordinate System.

	CORNER	Type of Corner Monument / Comments
<i>[Signature]</i> Surveyor's Signature	W 1/4 Corner	EXISTING 2" IRON PIPE W/ BRASS CAP
Date: <i>2-28-04</i>	NW Corner	LUNDE MONUMENT SET BY LAMPMAN 2-25-04
Surveyor's Seal	N 1/4 Corner	EXISTING IRON PIPE W/ 2" ALUMINUM CAP
	NE Corner	EXISTING BRASS CAPPED MONUMENT

COUNTRY U. S. A.		TYPE OF MARK 2" IRON PIPE WITH BRASS CAP		STATION ¼ CORNER 16 15		T. 13 N. R. 2 W.	
LOCALITY LA FARGE, WIS.		STAMPING ON MARK 16 15		AGENCY (CAST IN MARKS) CORPS OF ENGRS		ELEVATION (FT) (M)	
LATITUDE		LONGITUDE		DATUM		DATUM	
(NORTHING)(EASTING) (FT)	(EASTING)(NORTHING) (FT)	GRID AND ZONE		ESTABLISHED BY (AGENCY)			
584,837.66 (M)	1,838,025.85 (M)	WIS. (SOUTH)		CHICAGO DISTRICT			
(NORTHING)(EASTING) (FT)	(EASTING)(NORTHING) (FT)	GRID AND ZONE		DATE		ORDER	
(M)	(M)			1965			

TO OBTAIN GRID AZIMUTH, ADD TO THE GEODETIC AZIMUTH  
 TO OBTAIN GRID AZ. (ADD)(SUB.) TO THE GEODETIC AZIMUTH

OBJECT	AZIMUTH OR DIRECTION (GEODETIC)(GRID) (MAGNETIC)	BACK AZIMUTH	GEOD. DISTANCE		GRID DISTANCE	
			(METERS)	(FEET)	(METERS)	(FEET)
POINT NEAR 16 15	S. 85° 38' 10" E	" ' "			237.36	
½" I.P. @ FC CORNER	S. 58° 16' 46" E				84.08	
REF. NO. 1	S. 33° 41' 10" E				47.11	
REF. NO. 2	S. 09° 51' 50" W				85.80	
REF. NO. 3	S. 77° 22' 50" W				100.56	

REFERENCE DISTANCES ARE HORIZONTAL.  
 REFERENCE TREE IS BLAZED & SCRIBED T.

